

LONDON

EVENT PLANNER GUIDE 2017



LONDON®
& PARTNERS



SPACE TO MEET, INSPIRE & CELEBRATE



Contents

| | |
|---|-----------|
| Welcome to London | 4 |
| How we can help London & Partners contact details | 5 |
| London's highlights | 6 |
| Partner index | 14 |
| Exhibition Centres | 14 |
| Venues | 14-16 |
| Attraction Venues | 16-17 |
| Academic Venues | 18 |
| Riverboats | 18 |
| Hotels With Meeting Spaces | 18-22 |
| Accommodation Only | 22-24 |
| Homestay | 24 |
| Airport Hotels | 24 |
| PCO's | 25 |
| DMC's | 25 |
| EMC's | 26 |
| Service Providers | 26 |
| Caterers | 27 |
| Transport | 27 |
| Group Activities | 27 |
| Tours | 28 |
| Restaurants | 29 |
| The Tower Room | 30 |
| London map | 32 |
| London Tube map | 35 |

Welcome to London

London is a destination like no other.

It's a city where heritage and technology collide; where venues steeped in history and grandeur stand tall among towering skyscrapers which captivate the skyline; and where world-famous museums and galleries rub shoulders with Michelin-starred restaurants. It's also a city leading the way in innovative event concepts and solutions and home to cutting-edge industry clusters, which make the city a vibrant and innovative business event destination with access to top speakers and quality delegates.

The city is home to more than 1,000 diverse venues, from blank canvas warehouse spaces and trendy pop

ups, to purpose built conference centres and state-of-the-art auditoriums. Additionally there are over 139,000 hotel rooms from budget to boutique. Whether it's for 10 people or 35,000, an exclusive incentive programme or a city-wide tech event – London has it all.

The London Event Planner Guide 2017 will navigate you through some of the best experiences London has to offer, providing a comprehensive index and capacity guide of London's accommodation, attractions, venues and services.

How we can help

London & Partners is the official convention bureau for London. We work with event professionals, meeting organisers and incentive planners to help you achieve the most out of London's venues, hotels and support services.



By speaking to our expert team you can access the very best free advice for creating a lasting event legacy in London. We work closely with you to unlock the city, find the right venues, plan site inspections, and connect you with the ideal solution. The result? An event that will surpass your greatest expectations and meet your objectives.

For useful resources, regular features on what's new in London, details of where to meet the team, or to submit an RFP, visit: conventionbureau.london

If you're interested in organising an industry specific event, you can also visit conventionbureau.london/cutting-edge

Convention Bureau
London & Partners
+44 (0) 20 7234 5833
conventionbureau@londonandpartners.com

US office
+1 212 850 0366
clynn@londonandpartners.com

 [London & Partners Convention Bureau](#)
 [@London_CVB](#)



London's highlights

Our expert team have created these inspirational itineraries to give you a snapshot of what London has to offer your clients.



Incentives

London's incentive offering is exciting and inspiring, from action packed activities to some more relaxing things to do.

Here are our top tips:

Up at The O2 offers a chance to view London from the roof of the arena (boots and ropes are provided) or within **The O2 arena** is **Brooklyn Bowl** for a spot of bowling and refreshments.

If you fancy some water activity, **Thames Rib Experience** provides a fast James Bond style trip up the river with splashes and spray!

Small car BIG CITY is new to the city and transports you in vintage mini coopers around the streets of London on treasure trails. May the best team win!

If race tracks are more your thing then **Capital Karts** will work! It's the UK's longest indoor go karting track.

For something a little less active, visit **Madame Tussauds** look-alikes; or **Abbey Road Studios**, the most famous recording studio in the world, where you can practice online mixing, and record your own song.

Discover the **Making of Harry Potter at Warner Bros. Studio Tour London**, where you can immerse yourself in the film artefacts, check out the Creature Effects department and try some butter beer.

Cookery School at Little Portland Street is an interactive team building activity where you can improve your cooking skills, and then enjoy the fruits of your labour. This activity is limited to 50 places.

London has many **Destination Management Companies**, who can help you to build your incentive programmes, find accommodation and work with you on transport options and off site activities.



Royal history

All things 'royal' continues to be a popular London theme as our future King proudly holds the title of 'Londoner of the Decade'.

To sample London's royal locations, first and foremost head to **Kensington Palace**, the London home of Prince William, Kate, George and Charlotte, where you will tour the Palace's history, including the Gardens and surrounding Royal Park land. A refurbished cafeteria, not to mention the Orangery, offer a wide range of refreshments.

Each year from late July until the end of September, the lavish **State Rooms of Buckingham Palace** open their doors showcasing special exhibitions. **The Royal Mews**, which houses the state coach and horses, is also open from March until October.

From here you can stroll through **St. James Park**, the second of our eight **Royal Parks** across the city, to **Westminster Abbey**, the historic setting of some of the most famous royal weddings and coronations.

Close by **Banqueting House** in Whitehall, is home to the famous Ruben's ceiling and you can also stand on the spot where King Charles I was executed in 1649. Further afield from central London, you will find the last two of London's palaces: **Hampton Court**, where King Henry VIII and his doomed queen, Anne Boleyn, once lived. This Palace explores the Tudor era inside its walls, whilst beautiful gardens and a maze will keep you happy for the day.

Last but not least, **Kew Palace** will allow you to catch a glimpse of an intimate royal family retreat. Queen Charlotte's cottage tucked away in **Kew Gardens** was a hidden gem used by the royal family for rest and refreshments during walks.

At the end of this trip you will know everything about London's royal history!

Most of these locations offer private hire for events.



Luxury London

London has everything you need from luxury hotels and spas to designer shopping and Michelin star restaurants.

Let's begin in Mayfair, home to many of our top hotels, including the **London Hilton on Park Lane**, the **Intercontinental London Park Lane** and **The May Fair** (Edwardian hotels). And we must not forget the **Sheraton Grand London Park Lane** on Piccadilly, which has just completed a multi-million pound renovation.

Once settled in your hotel, a trip to Bond Street is a must for some retail therapy – here you will find all of the world's biggest luxury brands including Prada, Tiffany's and Burberry. However, if you prefer to take the hassle out of shopping, just book a personal shopping experience at Harrod's By Appointment Service. Individual personal tailoring is a historic trade in London, so if this more for you, head to Savile Row, which dates back to 1938, or Jermyn Street in the heart of St James's, one of London's most historic shopping districts.

Afternoon tea at the **Corinthia** will be a welcome distraction from all that shopping and then it's straight to **ESPA Life** for that important massage and pamper before pre dinner drinks.

Mayfair is again where you will find some of the top restaurants such as **Alain Ducasse** at the **Dorchester**, **Hélène Darroze** at the **Connaught** and **AVISTA** at the **Millennium Mayfair** by **Arturo Granato**. **Le Gavroche**, **Hibiscus**, and **Sketch** are also close by, whereas just a stone's throw away in Knightsbridge, you will find **Marcus Wareing** at the **Berkeley** and **Dinner by Heston Blumenthal** at the **Mandarin Oriental**.

The choice of pillows in your hotel will be the last decision you need to make today!

London up high

London's skyline is forever changing, take a look at these ideas for an exciting trip!

We begin in **Greenwich Park**, where the view from the **Royal Observatory** to Canary Wharf and beyond is second to none. The city's skyscrapers tower over the Royal Borough and make you want to stay and experience the attractions on offer. Stroll down towards the **National Maritime Museum**, **Old Royal Naval College**, **Queen's House** and the **Cutty Sark**. It's almost too much to take in, so there are plenty of places for coffee or lunch before taking the **MBNA Thames Clipper** river taxi to your next location.

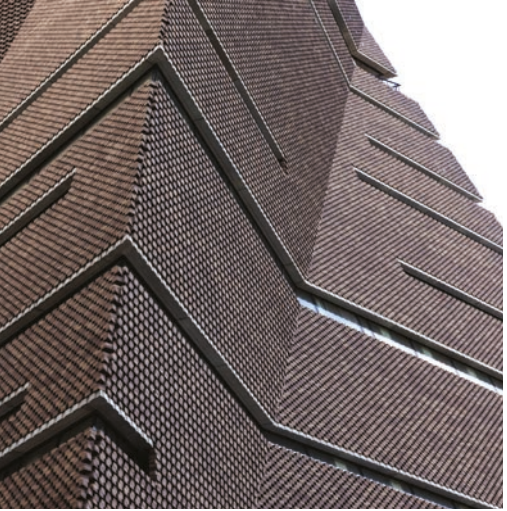
Next up is the **Shard** in all its glory, where you can rocket right to the top, or just go half way and have afternoon tea at the **Shangri-La**.

A short walk down the river will take you to the **Coca Cola London Eye**, where you can take a 45-minute flight and see London from east to west. It's worth mentioning that groups can also have champagne and canapes in the pods.

ME London is the final stop for drinks at sunset in the **Radio Rooftop Bar**. **STK London** on site is perfect for dinner and then you are done!

New London

*No other city continues to evolve in the way that London does. Earlier this year **Tate Modern** opened its doors to its new extension. 336,000 individually laid bricks, and an outdoor terrace on the tenth floor provides the setting for some very fine art exhibitions. There are also new dedicated event spaces for those looking for some blank canvas space.*

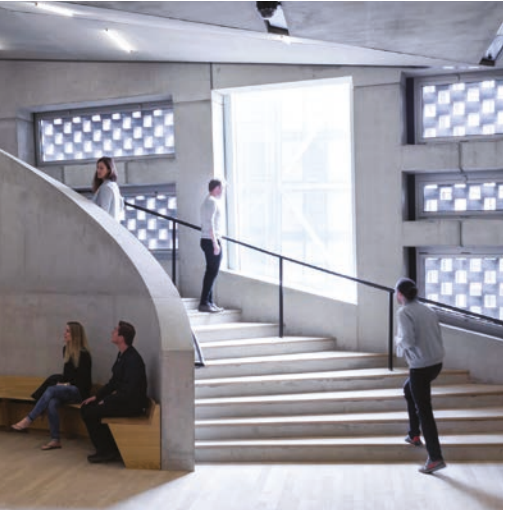


On the opposite side of the street, the **Hilton London Bankside** continues to be Hilton's newest opening in the capital, ideal for a bite to eat or staging an event.

On the London culture scene, the new **Design Museum** opened its doors in November 2016 in its new home on Kensington High Street. New exciting event spaces are promised!

Hotel numbers keep rising with the opening of the **Four Seasons Hotel at Ten Trinity Square** in December 2016, and more recently, the **Intercontinental London - The O2** opened its doors offering a ballroom for up to 3,000 people.

Accommodation in London is not just restricted to hotels however, **Airbnb** now offer group business travel and are keen to embrace the events market.



Camm and Hooper's Victorian Bath House is one of London's most exclusive hideouts, with capacities of up to 150 in a very special setting on **Bishopsgate Churchyard**. **Six Storeys on Soho** has also been restored to its former glory - the townhouse will host six floors of decadence: elegant bars, a relaxed dining style and private rooms.

Last but not least, etc. venues – **County Hall** will launch in early 2017, providing their largest and most ambitious event space to date; 43,000 sq ft consisting of 20 rooms, some with uninterrupted views of the River Thames, Big Ben and the Houses of Parliament, is eagerly awaited amongst event planners around the world.

Park Plaza Hotels and the **Marriott County Hall** surround this venue so that bedrooms will never be in short supply.



Cultural London

When it comes to culture, London has it all. From museums and galleries, modern and traditional to attractions and much more, you will never tire of art and sculpture. Most attractions are free, with the exception of some special exhibitions which we recommend you book in advance.

Here are our top tips:

If paintings are your thing, then the **National Gallery**, and **Portrait Gallery** on Trafalgar Square plus the **Royal Academy of Arts** on Piccadilly are all a must see. All galleries have cafeterias to keep you refreshed. **Tate Britain** and the **Wallace Collection** should also be on your list.

Art comes in many forms, and London meets the challenge with a difference in the **Saatchi Gallery** and **Ripley's Believe it or Not**. Both will leave you wanting more, so **Newport Street Gallery** in Vauxhall presents work from Damien Hirst's art collection. This will leave you satisfied.

If you prefer museums and history, then choose from the **Natural History Museum**, **Victoria & Albert** or **Science Museum** in Kensington. All are amazing events venues as well. But don't forget the **British Museum**, **IWM**



London and **Shakespeare's Globe** where you can combine a visit to the artefacts with an arty performance. Top attractions also include the **Tower of London** with its crown jewels tour, **Tower Bridge** where you can walk on a section of glass floor, and the **London Transport Museum**, where you can take in transport through the decades.

Music is a big part of our city, and you will find the best of this at **The O2 arena** in North Greenwich where the biggest acts come to town often filling the 20,000 seater auditorium.

Smaller more exclusive gigs take place in **Indigo at The O2**, and there's a multitude of restaurants and bars for afterwards, including **Building Six** nightclub, if you fancy a boogie.

Last but not least, many theatres around London are showcasing new musicals and plays including some of which have been around for several years. Check out visitlondon.com for a current viewing list and ticket deals.

Edwardian Hotels London have several hotels all over the city, making them the perfect partner for overnight accommodation.

Value for money London

There is a wealth of opportunities for value, budget options in London. Read on to find out how you can make your pound go further.

Let's start with hotels. From **Travelodge**, with 36 hotels all over the capital, to **Accor**, which include the **Novotel**, **Mercure** and **ibis** brands, there is a multitude of choice. The largest of these is the **Novotel London West**, which features large meeting space and 630 bedrooms for those residential meetings.

Many Hilton hotels are located in London, including one of the largest in Europe, the **Hilton London Metropole**. This firm favourite with both event planners and business travellers continues to stay ahead of the game with planned refurbishments. Indeed, its new ballroom has just been unveiled! Also let's not forget the others from **Syon Park** to **Tower Bridge**, the **Waldorf** and the **Trafalgar** to name a few.

GLH have 14 hotels in London including 7 **Thistles**, 2 of the new **Amba** brand, and the **Royal Horseguards** in Whitehall. **The Tower**, with views of Tower Bridge and St Katharine's Dock, offers 800 bedrooms and extensive meeting space.

There are also some low cost events spaces e.g. **Friends House**, **Imperial College**, **BMA House** and **The Crystal** which all offer regular deals. And to end the day, why not try the **Rainforest Café** or **Fire and Stone pizzeria** in Covent Garden.

Finally Heathrow offers lower cost options than central London with six great hotels: **Sofitel London Heathrow Terminal 5**; **Hilton London Heathrow Terminal 5** and **Radisson Edwardian Heathrow** amongst them. All have lots of meeting space and a great selection of accommodation without the travel.

Hidden gems

London is full of surprises. Read on for those best kept secrets.

This journey starts in the **City of London**, the heart of our financial district, steeped in history with over 50 **Livery Halls**, regulating trades since the 14th century. The most famous of all is **Guildhall** with its Great Hall, Library and Art Gallery, a city powerhouse since the 12th century, today it houses state banquets and is the home of the City of London Corporation.

A short cycle ride away on **Santander Cycles** will take you to one of our oldest markets, **Leadenhall**, originally a meat and game market, but now full of different restaurants, pubs and vendors in the original historical setting.

As you move around the city, you will find many new tall glass structures which we have taken into our hearts and renamed - **The Gherkin**, the **Walkie Talkie** and the **Cheesegrater**. At the top of the **Walkie Talkie** sits the **Skygarden**, an oasis of calm and buzz, where you can sip a glass of champagne or feast from a choice of two restaurants.

For an alternative hidden gem tour, travel further east to the **Queen Elizabeth II Olympic Park**, where you can take stock of the developments over the last 4 years. The best view point is undoubtedly the **ArcelorMittal Orbit**, with its new slide back down to the bottom!

Walking around you will find the **London Stadium**, now home to a local football team, the **Aquatics Centre**, training ground to Tom Daley, the **Copper Box** and the **Velodrome**, some of which hold events. A little further afield is the **Lee Valley Regional Park** with its white water rafting course, where our future Olympians train.

New London Architecture offer guided tours of these amazing structures.

Unexpected London

If you are thinking of holding an event in London there are lots of venues, restaurants and hotels to choose from.



For example, **Banking Hall**, a former Lloyd's Bank, is a Grade II listed building which combines heritage with the latest technology in events. Close by, **Cheval Three Quays** offers award winning serviced apartments, or if you prefer a hotel, then the **Doubletree by Hilton London Tower Bridge** is available with a fantastic Sky Lounge from which to watch the sun go down.

At Blackfriars Bridge, the **Novotel London Blackfriars** is a new generation of Accor hotels that offers some cool bedrooms and meeting space for a smaller meeting. It even has a pool!

Moving even closer to the centre of town, **Carlton House Terrace**, home to the British Academy and a former residence of William Gladstone, sits at the very heart of the capital, overlooking the Mall. It has a selection of traditional rooms for meetings and events; **Le Meridien Piccadilly** or the **W Hotel** would be the closest hotels for overnight accommodation, both top 5-star hotels.

After all the work is done, it's time to relax and have some fun with or without your group, so head to **Shrek's Adventure** or the **London Dungeon** for a few laughs and shrieks, before choosing dinner options of either **Bubba Gump Shrimp Company**, in its first site in the UK, or **Smith & Wollensky** just off the Strand. If you prefer more traditional dining, then **Rules**, London's oldest restaurant is waiting for you.



Shoppers' delight

London is a shopper's paradise. Here are some ideas of where to go:

Take a trip to one of the capital's two top shopping centres **Westfield London** or **Westfield Stratford City**. Here, you will find all of the best high-street brands and some luxury shops, together with fabulous food areas for refuelling. **KidZania** will also keep the kids happy. For bargains head to the London Designer Outlet at **Wembley** and watch this space for more information on **The O2's** shopping experience coming soon.

London's West End shopping district gives you easy access to the best stores, whatever your tastes. Oxford Street is home to flagship retailers such as **John Lewis** and **Selfridges**, whereas **Regent Street** and the **King's Road** have some mid-range to high end stores. Don't forget **Shaftesbury Avenue** and **St Martin's Courtyard**, off the main shopping area for fashion-forward brands, trendy homeware and top places for a bite to eat.

Alternatively, check out **Seven Dials**, and **Carnaby Street**, for boutique brands, independent record stores, and bars and cafés ideal for resting and watching the world go by.

For a trip out of London, visit **Bicester Village** for lots of exclusive offers and a VIP experience in luxury outlets such as **Radley London**, **Jimmy Choo** and **Mulberry**.

The Amba Hotel Marble Arch is particularly well located on Oxford Street making it a natural fit for those multi day shopping trips.

London's Tech scene

Tech in London is mainly centred around Shoreditch and the Old Street roundabout in east London.



Here, around 40,000 tech businesses thrive in collaboration spaces such as **Central Working** and **WeWork**, so if you are looking to organise a tech event, then there are some vibrant spaces in this neck of the woods.

Tobacco Dock is one of the largest event venues in the area, with a multitude of different spaces on offer, including collaboration space. **The Trampery**, **Rainmaking Loft**, and etc venues – **155 Bishopsgate** are all in the vicinity and as for hotels, the **Ace Hotel London**, **The Tower Hotel** and **Grange Hotels** are available for overnight accommodation needs.



The biggest of our venues is **ExCel London** home to many events, some of which are tech related. It has an abundance of spaces for events, from small to large, making it a popular choice for public shows, trade shows, association and corporate events, and special occasions. The venue is surrounded by hotels, the closest of which are the **Aloft**, the **Novotel London ExCel**, **Ibis London ExCel**, and the **Doubletree by Hilton ExCel**. This makes it the perfect location for an event.

There are also other venues and hotels in central London which are associated with the tech scene. For example on Embankment, **IET London: Savoy Place**

opened its doors last year. It's modern and has built in audio visual elements, not to mention the roof terrace with stunning river views.

The Rosewood London and **St Martins Lane** are really modern and offer trendy meeting spaces plus superb accommodation.

Last but not least, the **Tower Room at London & Partners offices** is a funky space for those smaller occasions, with views of Tower Bridge and the Tower of London. The space also has an interactive video wall.

Partner index



The Convention Bureau represents a range of partners across every aspect of event planning from accommodation to transport providers. The partner index is a comprehensive list giving you access to some of the city’s most trusted providers and a detailed guide to the city’s accommodation and venue capacities.

Exhibition Centres

| Centre | T | CA | CL | B | R | Max Sqm | Meeting Rooms | Closest Tube |
|------------------------|-----------|-----------|-----------|-----------|-----------|------------|---------------|-------------------------|
| ExCeL London | 20 -20000 | 20 -20000 | 20 -20000 | 20 -20000 | 20 -10000 | 100000 | 72 | Prince Regent (DLR) |
| Olympia London | 4000 | n/a | n/a | 3000 | 10000 | 1800-40000 | 6 | Kensington Olympia (OV) |
| Business Design Centre | 2500 | 960 | 670 | 900 | 900 | 2088 | 14 | Angel |
| QEII Centre | 1200 | 497 | 600 | 930 | 1200 | 1375 | 32 | Westminster |

Venues

| Venue | T | CA | CL | B | R | Max Sqm | Meeting Rooms | Closest Tube |
|--------------------------|-------|------|------|------|-------|---------|---------------|-----------------------|
| The O2 | 20000 | n/a | n/a | 2200 | 3000 | 3402 | 7 | North Greenwich |
| Alexandra Palace | 7000 | 3500 | 2000 | 5000 | 10250 | 6426 | 8 | Wood Green |
| Battersea Evolution | 4000 | 2200 | 1500 | 2200 | 4000 | 3750 | 1 | Sloane Square |
| Southbank Centre | 2500 | 100 | 40 | 160 | 250 | 174 | 11 | Waterloo |
| Central Hall Westminster | 2039 | 400 | 70 | n/a | 1300 | 734 | 5 | Westminster |
| Barbican Centre | 1943 | 96 | 100 | 280 | 650 | 736 | 15 | Moorgate |
| Wembley Stadium | 1800 | 1100 | n/a | 1100 | 3250 | 3480 | 25 | Wembley Park |
| indigo at The O2 | 1625 | 336 | n/a | 540 | 1500 | 650 | 1 | North Greenwich |
| Sadler's Wells | 1500 | 150 | 100 | 160 | 350 | 225 | 10 | Angel |
| Tobacco Dock | 1500 | 770 | 350 | 1200 | 10000 | 1178 | 40 | Shadwell (DLR and OV) |
| Twickenham Stadium | 1200 | 500 | 150 | 900 | 1200 | 1173 | 175 | Twickenham (NR) |
| Cadogan Hall | 953 | 100 | 100 | 150 | 300 | 263 | 3 | Sloane Square |

(m - feet conversion 1m = 3.280ft)
T - Theatre CA - Cabaret CL - Classroom B - Banquet R - Reception (NR) - National Rail (OV) - Overground (DLR) - Docklands Light Railway

Venues

| Venue | T | CA | CL | B | R | Max Sqm | Meeting Rooms | Closest Tube |
|---|-----|-----|-----|-----|------|---------|---------------|------------------------|
| The Brewery | 900 | 500 | 390 | 700 | 1000 | 778 | 8 | Moorgate |
| Chelsea Football Club - Stamford Bridge | 850 | 550 | 550 | 650 | 1000 | 1400 | 24+ | Fulham Broadway |
| The Camden Centre | 800 | 350 | 250 | 350 | 900 | 450 | 2 | Kings Cross St Pancras |
| Guildhall | 760 | 320 | 210 | 624 | 900 | 630 | 7 | Bank |
| Grand Connaught Rooms | 750 | 400 | 315 | 540 | 1000 | 475 | 39 | Holborn |
| Lee Valley VeloPark | 750 | n/a | n/a | 750 | 750 | 2185 | 1 | Stratford |
| Church House Westminster | 664 | 208 | 198 | 372 | 550 | 519 | 19 | St James Park |
| IET London: Savoy Place | 626 | 138 | 130 | 300 | 330 | 408 | 21 | Embankment |
| East Wintergarden | 600 | 320 | 360 | 500 | 1000 | 682 | 3 | Canary Wharf |
| Mermaid Conference and Events Centre | 600 | 300 | 195 | 300 | 500 | 1305 | 8 | Blackfriars |
| Emirates Stadium Events - Arsenal Football Club | 600 | 400 | 325 | 500 | 1200 | 1372 | 17 | Holloway Road |
| Senate House | 600 | 200 | 150 | 348 | 350 | 416 | 13 | Russell Square |
| etc venues - 155 Bishopsgate | 550 | 350 | 260 | 350 | 900 | 520 | 5 | Liverpool Street |
| Hackney Town Hall | 420 | n/a | n/a | 300 | 550 | 415 | 1 | Hackney Central |
| Building Six | 400 | 230 | n/a | 570 | 3000 | 3041 | 2 | North Greenwich |
| CentrEd at ExCeL | 400 | 184 | 145 | 230 | 400 | 362 | 29 | Custom House |
| etc venues St Paul's | 400 | 250 | 190 | 250 | 500 | 288 | 14 | Barbican |
| etc venues County Hall | 400 | 252 | 180 | 252 | 800 | 394 | 18 | Waterloo |
| KidZania | 400 | 350 | 300 | 250 | 1000 | 75000 | 6 | Shepherds Bush |
| Kings Place Events | 400 | 100 | 72 | 220 | 440 | 286 | 10+ | Kings Cross St Pancras |
| One Great George Street | 400 | 260 | 135 | 250 | 400 | 395 | 21 | Westminster |
| Plaisterer's Hall | 400 | 200 | 120 | 360 | 550 | 375 | 4 | St Paul's |
| Altitude London | 370 | 200 | 200 | 450 | 600 | 750 | 4 | Pimlico |
| 116 Pall Mall - Home of the IoD | 350 | 176 | 180 | 250 | 350 | 914 | 29 | Charing Cross |
| 15 Hatfields | 330 | 230 | 150 | 180 | 550 | 256 | 4 | Waterloo |
| Royal College of Physicians | 304 | 96 | 80 | 300 | 350 | 287 | 18 | Regents Park |
| London's Living Room | 300 | 100 | n/a | 100 | 250 | n/a | 11 | London Bridge |
| Baden-Powell House Conference Centre | 300 | 140 | 75 | 120 | 300 | 241 | 12 | Gloucester Road |
| Glaziers Hall | 300 | 200 | 84 | 220 | 450 | 22.27 | 5 | London Bridge |
| One Whitehall Place (Royal Horseguards) | 300 | 170 | 180 | 228 | 350 | 214 | 13 | Embankment |
| BMA House | 294 | 160 | 120 | 200 | 320 | 406 | 21 | Euston |
| No 11 Cavendish Square | 282 | 120 | 132 | 200 | 300 | 16 | 30 | Oxford Circus |
| Banking Hall | 280 | 180 | 180 | 280 | 900 | 378 | 3 | Bank |
| The Crystal | 270 | 95 | 104 | 190 | 720 | 1600 | 14 | Royal Victoria (DLR) |
| Gilwell Park Conference Centre | 250 | 180 | 50 | 180 | 250 | 247 | 8 | Chingford (NR) |
| Brooklyn Bowl | 250 | 105 | n/a | 150 | 1000 | 188 | 1 | North Greenwich |

(m - feet conversion 1m = 3.280ft)
T - Theatre CA - Cabaret CL - Classroom B - Banquet R - Reception (NR) - National Rail (OV) - Overground (DLR) - Docklands Light Railway

Venues

| Venue | T | CA | CL | B | R | Max Sqm | Meeting Rooms | Closest Tube |
|-------------------------------------|-----|-----|-----|---|------|---------|---------------|----------------------|
| BAFTA 195 Piccadilly | 227 | 144 | 80 | 180 | 260 | 561 | 3 | Piccadilly Circus |
| Level 39 | 220 | 120 | 150 | 150 | 250 | 263 | 4 | Canary Wharf |
| The Hippodrome Casino | 200 | 150 | n/a | 140 | 800 | n/a | 10 | Leicester Square |
| The Pavilion at the Tower of London | 200 | 600 | 200 | 600 | 1000 | 849 | 1 | Tower Hill |
| Café de Paris | 180 | 120 | 150 | 288 | 715 | 324 | 1 | Picadilly Circus |
| Coin Street Conference Centre | 170 | 112 | 80 | 112 | 250 | 180 | 9 | Waterloo |
| Tottenham Hotspurs | 160 | 100 | n/a | 200 | 300 | n/a | 14 | White Hart Lane (OV) |
| Wellcome Collection | 154 | 60 | 154 | 60 | 200 | n/a | 7 | Euston |
| Tanner & Co. | 150 | 100 | 40 | 100 | 300 | 256 | 1 | London Bridge |
| The Roof Gardens | 150 | 100 | 70 | 200 | 500 | 299 | 1 | High St. Kensington |
| WWT London Wetland Centre | 150 | 110 | n/a | 110 | 200 | 160 | 5 | Hammersmith |
| OXO2 | 150 | n/a | n/a | 220 | 400 | 537 | 2 | Waterloo |
| Searcy's The Gherkin | 140 | 70 | n/a | 140 | 260 | n/a | 4 | Aldgate |
| Trinity House | 130 | 130 | 67 | 130 | 180 | 164 | 5 | Tower Hill |
| Carlton House Terrace | 125 | 56 | 35 | 100 | 600 | 102 | 11 | Charing Cross |
| St Martin-in-the-Fields | 120 | 60 | n/a | 100 | 120 | 126 | 4 | Charing Cross |
| The Clubhouse St James | 120 | 30 | n/a | n/a | 175 | 170 | 10 | Green Park |
| The Clubhouse Grosvenor Hill | 110 | 48 | 40 | n/a | 150 | 170 | 7 | Bond Street |
| Southwark Cathedral | 80 | 56 | 80 | 200 | 800 | 556 | 7 | London Bridge |
| Victorian Bathhouse | 50 | 40 | 40 | 90 | 150 | 120.75 | 1 | Liverpool Street |
| Six Storeys | 50 | n/a | n/a | 50 | 300 | 48.9 | 2 | Tottenham Court Rd |
| The Tower Room at London & Partners | 50 | 35 | 24 | 25 | 80 | 86 | 1 | London Bridge |
| Lancaster House | n/a | n/a | n/a | 150 | 700 | n/a | 5 | Green Park |
| Westfield White City | n/a | n/a | n/a | | | | n/a | White City |
| Westfield Stratford | n/a | n/a | n/a | Experiential - car launches, large promotional events | | | n/a | Stratford |
| | | | | | | | | |
| | | | | | | | | |
| | | | | | | | | |
| | | | | | | | | |
| | | | | | | | | |
| | | | | | | | | |
| | | | | | | | | |
| | | | | | | | | |
| | | | | | | | | |
| | | | | | | | | |

(m - feet conversion 1m = 3.280ft)
T - Theatre CA - Cabaret CL - Classroom B - Banquet R - Reception (NR) - National Rail (OV) - Overground (DLR) - Docklands Light Railway

Attraction Venues

| Venue | T | CA | CL | B | R | Max Sqm | Rooms for hire | Closest tube |
|------------------------------------|-----------------------|-----------------------|-----|-----|-------------------------|------------------------|----------------|-------------------------|
| National Maritime Museum Greenwich | 1000 | n/a | n/a | 500 | 1000 | 1092 | 2 | Cutty Sark (DLR) |
| BFI IMAX | 498 | 250 | n/a | 250 | 500 | 251.7 | 1 | Waterloo |
| BFI Southbank | 450 | 60 | 20 | 80 | 450 | 180 | 1 | Waterloo |
| Royal Opera House | 450 | n/a | n/a | 450 | 1000 | 600 | 11 | Covent Garden |
| Banqueting House | 400 | 240 | n/a | 380 | 500 | 1844 | 2 | Westminster |
| Science Museum | 400 | 42 | n/a | 400 | 1000 | on app | 12 | South Kensington |
| Westminster Abbey | 400 summer season, 50 | 240 summer season, 80 | 32 | 280 | 1000-summer season, 400 | College garden | 6 | Westminster |
| National Gallery | 328 | 310 | n/a | 310 | 1200 | 345 | 18 | Charing Cross |
| British Museum | 323 | 40 | 45 | 300 | 650 | 496 | 8 | Holborn/Russell Square |
| Saatchi Gallery | 320 | 150 | 100 | 200 | 300 | 205 | 14 | Sloane Square |
| ZSL London Zoo | 300 | 240 | N/A | 260 | 300 | 411 | 12 | Camden Town |
| Shakespeare's Globe | 300 | 150 | n/a | 350 | 450 | 400 | 4 | Southwark |
| British Library Conference Centre | 255 | 30 | 24 | 70 | 240 | n/a | 6 | Kings Cross/St Pancras |
| Royal Air Force Museum | 250 | 120 | 50 | 444 | 800 | 480 | 10 | Collindale |
| Hampton Court Palace | 250 | 120 | 60 | 270 | 400 | 384 | 12 | Hampton Court (NR) |
| Tate Modern | 250 | 200 | n/a | 800 | 1500 | n/a | 16 | Southwark |
| Museum of London | 230 | 72 | 30 | 400 | 1000 | 404 | 15 | St Pauls |
| Royal Botanic Gardens, Kew | 230 | 160 | 150 | 230 | 400 | 388 | 7 | Kew Gardens |
| English Heritage - Eltham Palace | 210 | 126 | n/a | 200 | 300 | 18.58 | 3 | Mottingham (NR) |
| Natural History Museum | 209 | 360 | 360 | 650 | 1200 | n/a | 5 | South Kensington |
| Imperial War Museum London | 200 | 80 | 36 | 270 | 340 | 156 | 8 | Lambeth North |
| Kensington Palace | 200 | 120 | 70 | 230 | 300 | 221 | 3 | High St. Kensington |
| Old Royal Naval College Greenwich | 200 | 100 | 100 | 398 | 398 | 686 | 7 | Cutty Sark (DLR) |
| Tate Britain | 190 | 60 | 40 | 500 | 900 | n/a | 8 | Pimlico |
| London Canal Museum | 160 | 80 | 40 | 120 | 200 | N/A | 3 | Kings Cross St. Pancras |
| HM Tower of London | 150 | 100 | 80 | 240 | 300 | 384 | 12 | Tower Hill |
| Houses of Parliament | 150 | n/a | n/a | 170 | 450 Sat. otherwise 200 | 932 Sat. otherwise 181 | 13 | Westminster |
| V&A Museum of Childhood | 150 | 50 | 30 | 300 | 900 | 800 | 5 | Bethnal Green |
| Riverside Rooms | 150 | 120 | 150 | 150 | 150 | 13.69 | 4 | Waterloo |
| Museum of London Docklands | 146 | 80 | n/a | 200 | 400 | n/a | 7 | Canary Wharf |

(m - feet conversion 1m = 3.280ft)
T - Theatre CA - Cabaret CL - Classroom B - Banquet R - Reception (NR) - National Rail (OV) - Overground (DLR) - Docklands Light Railway

Attraction Venues

| Venue | T | CA | CL | B | R | Max Sqm | Rooms for hire | Closest tube |
|---|----------------------------------|-----|-----|-----|------|---------|----------------|---------------------|
| National Portrait Gallery | 138 | 60 | 60 | 230 | 400 | n/a | 9 | Charing Cross |
| Warner Bros. Studio Tour London The Making of Harry Potter | 125 | n/a | n/a | 520 | 600 | 2100 | 3 | Watford North (NR) |
| London Transport Museum | 121 | n/a | n/a | 180 | 500 | n/a | 3 | Covent Garden |
| Churchill War Rooms | 120 | 80 | 54 | 120 | 200 | 131 | 5 | Westminster |
| Museum of Brands, Packaging and Advertising | 120 | 45 | 45 | 80 | 250 | 120 | 2 | Ladbroke Grove |
| The View from the Shard | 120 | n/a | n/a | 50 | 300 | 873 | 2 | London Bridge |
| HMS Belfast | 110 | 70 | n/a | 144 | 250 | 228 | 6 | London Bridge |
| Queen's House Greenwich | 100 | 25 | 50 | 120 | 150 | 141 | 1 | Cutty Sark (DLR) |
| ArcelorMittal Orbit | 100 | 50 | n/a | 120 | 250 | 490 | 3 | Stratford |
| National Theatre | 100 | 48 | n/a | 80 | 150 | 100 | 5 | Waterloo |
| Somerset House | 100 | 36 | n/a | 550 | 1500 | 500 | 10+ | Temple |
| Royal Academy of Arts | 80 | 50 | n/a | 250 | 800 | n/a | n/a | Piccadilly Circus |
| English Heritage - Kenwood House | 80 | n/a | n/a | 80 | 100 | n/a | 1 | Archway |
| Tower Bridge Exhibition | 70 | n/a | n/a | 120 | 250 | 366 | 4 | Tower Hill |
| English Heritage - Rangers House | 60 | 30 | n/a | 60 | 80 | n/a | 1 | Blackheath (NR) |
| The Geffrye Museum | 50 | n/a | 48 | 70 | 250 | n/a | 3 | Hoxton (OV) |
| Kew Palace and Royal Kitchens | 40 | n/a | n/a | 30 | 40 | 52 | 2 | Kew Bridge |
| The Household Cavalry Museum | 40 | 20 | n/a | 40 | 100 | 170 | 2 | Charing Cross |
| English Heritage- Wellington Arch | 40 | 22 | n/a | 36 | 60 | n/a | 1 | Hyde Park Corner |
| Coca Cola London Eye | n/a | n/a | n/a | 8 | 25 | 30 | 32 | Waterloo |
| Cutty Sark Greenwich | n/a | n/a | n/a | 270 | 450 | n/a | 1 | Cutty Sark |
| Madame Tussauds London | n/a | n/a | n/a | 380 | 1000 | n/a | 5 | Baker Street |
| Royal Observatory Greenwich | n/a | n/a | n/a | 110 | 150 | 112 | 2 | Cutty Sark |
| SEA LIFE London Aquarium | n/a | n/a | n/a | 200 | 500 | n/a | 2 | Waterloo |
| The London Dungeon | n/a | n/a | n/a | 150 | 150 | n/a | 2 | Waterloo |
| The Wallace Collection | n/a | n/a | n/a | 160 | 300 | 1034 | 6 | Bond Street |
| Peter Harrison Planetarium | n/a | n/a | n/a | 110 | 150 | n/a | 2 | Cutty Sark |
| Victoria and Albert Museum | n/a | 300 | n/a | 400 | 600 | 629 | 10 | South Kensington |
| Shrek Adventure! London | n/a | n/a | n/a | 150 | 150 | n/a | 1 | Waterloo |
| The Golden Hinde | n/a | n/a | n/a | 100 | 100 | n/a | 3 | London Bridge |
| National Army Museum | refurbishment, opening 2017 | | | | | | | Sloane Square |
| Design Museum | refurbishment, opening late 2016 | | | | | | | High St. Kensington |

(m - feet conversion 1m = 3.280ft)
T - Theatre CA - Cabaret CL - Classroom B - Banquet R - Reception (NR) - National Rail (OV) - Overground (DLR) - Docklands Light Railway

Academic Venues

| Venue | T | CA | CL | B | R | Max Sqm | Rooms for hire | Closest tube |
|--|-----|-----|-----|-----|------|---------|----------------|-------------------|
| London School of Economics and Political Science (LSE) | 999 | n/a | 120 | n/a | 80 | n/a | Various | Holborn |
| Queen Mary University of London | 774 | 200 | 250 | 200 | 1000 | n/a | 37 | Mile End |
| Imperial College London | 740 | 168 | 90 | 350 | 600 | 572 | Various | South Kensington |
| King's Venues Guys Campus London Bridge | 450 | 60 | 80 | 80 | 120 | n/a | 36 | London Bridge |
| King's Venues Waterloo Campus | 397 | 36 | 110 | 400 | 400 | n/a | 48 | Waterloo |
| King's Venues Strand Campus | 320 | 120 | 140 | 150 | 250 | 574 | 50 | Temple |
| King's Venue Denmark Hill | 290 | n/a | n/a | n/a | n/a | 100 | n/a | Denmark Hill (NR) |
| London Southbank University | 220 | 48 | 30 | n/a | 90 | n/a | Various | Southwark |
| Loughborough University | 175 | 60 | 175 | 175 | 175 | n/a | Various | Stratford |
| | | | | | | | | |

Riverboats

| Boats | Seated | Reception | Seated Dinner | Location |
|--|--------|-----------|---------------|---------------------|
| Thames River Services and Circular Cruises Westminster | 524 | 500 | 250 | Optional |
| Bateaux London Thames Dining Cruise Experiences | 260 | 320 | 60 | Embankment |
| MBNA Thames Clippers | 220 | 220 | 220 | Optional |
| City Cruises | 200 | 595 | 200 | Optional |
| RS Hispaniola | 120 | 180 | 120 | Victoria Embankment |
| Thames RIB Experience | 12 | n/a | n/a | Optional |

Hotels With Meeting Spaces

| Hotel | T | CA | CL | B | R | Max Sqm | Meeting Rooms | Bed Rooms | Closest Tube |
|--------------------------------------|------|------|------|------|------|---------|---------------|-----------|------------------|
| Intercontinental London – The O2 | 3000 | 1680 | 1800 | 2400 | 3000 | 3012.86 | 20 | 453 | North Greenwich |
| Hilton London Metropole | 1700 | 624 | 650 | 1080 | 1600 | 1062 | 42 | 1059 | Edgware Road |
| Park Plaza Westminster Bridge | 1400 | 720 | 700 | 1350 | 1500 | 1167 | 31 | 1019 | Lambeth North |
| Grosvenor House, A JW Marriott Hotel | 1300 | 1000 | 700 | 2000 | 2000 | 1779 | 31 | 420 | Marble Arch |
| Lancaster London | 1200 | 640 | 552 | 1200 | 1680 | 1263 | 15 | 411 | Lancaster Gate |
| London Hilton on Park Lane | 1000 | 600 | 550 | 900 | 1250 | 937 | 13 | 453 | Hyde Park Corner |

(m - feet conversion 1m = 3.280ft)
T - Theatre CA - Cabaret CL - Classroom B - Banquet R - Reception (NR) - National Rail (OV) - Overground (DLR) - Docklands Light Railway

Hotels With Meeting Spaces

| Hotel | T | CA | CL | B | R | Max Sqm | Meeting Rooms | Bed Rooms | Closest Tube |
|---|------|-----|-----|------|------|---------|---------------|-----------|-----------------------------|
| Novotel London West | 1000 | n/a | 540 | 1200 | n/a | 1726 | 33 | 630 | Hammersmith |
| London Marriott Hotel Grosvenor Square | 900 | 432 | 500 | 648 | 1000 | 763 | 14 | 217 | Bond Street |
| Hilton London Wembley | 700 | 500 | 450 | 600 | 800 | 693 | 14 | 361 | Wembley Park |
| Intercontinental London Park Lane | 700 | 259 | 252 | 750 | 1000 | 841 | 13 | 454 | Hyde Park Corner |
| Park Plaza Riverbank London | 650 | 432 | 450 | 540 | 660 | 639 | 23 | 489 | Vauxhall |
| Hilton London Bankside | 600 | n/a | 350 | 600 | 700 | 891 | 11 | 292 | Southwark |
| Radisson Blu Portman | 600 | 200 | 180 | 550 | 600 | 632 | 6 | 272 | Marble Arch |
| The Landmark London | 568 | 264 | 364 | 432 | 750 | 610 | 13 | 300 | Marylebone |
| Park Plaza Victoria London | 550 | 280 | 260 | 400 | 750 | 607 | 15 | 299 | Victoria |
| Royal Garden Hotel | 550 | 280 | 320 | 430 | 800 | 939 | 10 | 394 | High Street Kensington |
| The Tower | 550 | 250 | 320 | 500 | 570 | 551 | 19 | 801 | Tower Hill |
| Chelsea Harbour Hotel | 500 | 300 | 250 | 500 | 800 | 564 | 11 | 158 | Imperial Wharf (NR and DLR) |
| Holiday Inn, Wembley | 500 | 400 | 250 | 500 | 500 | 800 | 7 | 336 | Wembley Park |
| Millennium Gloucester Hotel & Conference Centre | 500 | 288 | 300 | 480 | 650 | 420 | 12 | 610 | Gloucester Road |
| Millennium Hotel London Mayfair | 500 | 280 | 250 | 460 | 700 | 484 | 10 | 336 | Bond Street |
| Sheraton Grand London Park Lane | 500 | 240 | 300 | 420 | 1200 | 990 | 5 | 302 | Green Park |
| Clayton Crown | 460 | 200 | 200 | 300 | 380 | 390.6 | 4 | 152 | Cricklewood (NR) |
| Pullman London St Pancras | 446 | 200 | 220 | 240 | 450 | 552 | 17 | 312 | Kings Cross St. Pancras |
| Rosewood London | 430 | 200 | 285 | 340 | 555 | 397 | 12 | 306 | Holborn |
| Amba Hotel Marble Arch | 400 | 200 | 200 | 300 | 500 | 313 | 13 | 692 | Marble Arch |
| Hilton London Syon Park | 400 | n/a | 300 | 400 | 700 | 465 | 15 | 137 | Syon Lane |
| Hilton London Tower Bridge | 400 | n/a | 220 | 300 | 450 | 334 | 10 | 246 | London Bridge |
| Jumeirah Carlton Tower | 400 | 240 | 250 | 400 | 700 | 445 | 11 | 216 | Knightsbridge |
| The Dorchester | 400 | 240 | 300 | 510 | 1000 | 957 | 10 | 250 | Hyde Park Corner |
| Hilton London Canary Wharf | 380 | n/a | 220 | 270 | 400 | 337 | 8 | 282 | Canary Wharf |
| The Langham London | 375 | 136 | 154 | 250 | 375 | 364 | 16 | 380 | Oxford Circus |
| Hilton London Paddington | 350 | n/a | 160 | 280 | 300 | 282 | 18 | 419 | Paddington |
| The Cumberland | 350 | 180 | 190 | 240 | 400 | 414 | 27 | 1019 | Marble Arch |
| Clayton Hotel Chiswick | 330 | 200 | 200 | 330 | 330 | 429 | 10 | 227 | Gunnelsbury |
| St Pancras Renaissance London Hotel | 325 | 240 | 220 | 280 | 575 | 453 | 10 | 245 | Kings Cross St. Pancras |
| Copthorne Tara Hotel London Kensington | 320 | 120 | 120 | 332 | 500 | 410 | 7 | 833 | High St. Kensington |

(m - feet conversion 1m = 3.280ft)
T - Theatre CA - Cabaret CL - Classroom B - Banquet R - Reception (NR) - National Rail (OV) - Overground (DLR) - Docklands Light Railway

Hotels With Meeting Spaces

| Hotel | T | CA | CL | B | R | Max Sqm | Meeting Rooms | Bed Rooms | Closest Tube |
|--|-----|-----|-----|-----|-----|---------|---------------|-----------|---------------------|
| The Bloomsbury Hotel | 320 | 160 | 160 | 180 | 250 | 266 | 13 | 153 | Tottenham Court Rd |
| Radisson Blu Edwardian, Bloomsbury Street | 300 | 120 | 120 | 240 | 300 | 232 | 9 | 174 | Tottenham Court Rd |
| The Lensbury Hotel | 300 | 185 | 50 | 220 | 260 | 300 | 30 | 171 | Teddington (NR) |
| London Marriott Hotel Regent's Park | 300 | 120 | 150 | 300 | 300 | 311 | 10 | 308 | Swiss Cottage |
| The Royal Horseguards | 300 | 170 | 180 | 228 | 350 | 214 | 13 | 281 | Embankment |
| The Waldorf Hilton | 300 | 150 | 150 | 350 | 700 | 491 | 9 | 298 | Covent Garden |
| London Marriott West India Quay Hotel | 290 | 102 | 132 | 160 | 300 | 230 | 16 | 302 | Canary Wharf |
| Claridge's | 280 | 120 | 150 | 250 | 450 | 338 | 7 | 203 | Bond Street |
| The May Fair Hotel | 280 | 120 | 140 | 220 | 370 | 336 | 17 | 437 | Green Park |
| Andaz Liverpool Street | 250 | 120 | 120 | 220 | 300 | 299 | 15 | 267 | Liverpool Street |
| Corinthia Hotel London | 250 | 120 | 120 | 180 | 400 | 218 | 8 | 294 | Embankment |
| Hilton London Olympia | 250 | n/a | 150 | 300 | 350 | 491 | 10 | 405 | Olympia London (OV) |
| Hyatt Regency London The Churchill | 250 | 144 | 180 | 240 | 350 | 242 | 10 | 453 | Marble Arch |
| Mandarin Oriental Hyde Park | 250 | 125 | 120 | 250 | 400 | 244 | 5 | 194 | Knightsbridge |
| ME London | 250 | 170 | 153 | 253 | 300 | 500 | 7 | 157 | Temple |
| Radisson Blu Edwardian, New Providence Wharf | 250 | 128 | 120 | 180 | 200 | 210 | 8 | 169 | Canary Wharf |
| The Berkeley | 250 | 100 | 100 | 200 | 450 | 252 | 6 | 210 | Hyde Park Corner |
| DoubleTree by Hilton Hotel London- Ealing | 230 | n/a | n/a | 230 | 230 | n/a | 7 | 189 | Ealing Common |
| Le Meridien Piccadilly | 230 | 104 | 120 | 200 | 245 | 168 | 7 | 280 | Piccadilly Circus |
| DoubleTree by Hilton Hotel London- Tower of London | 220 | 120 | 84 | 150 | 250 | 198 | 23 | 583 | Tower Hill |
| DoubleTree by Hilton Hotel London- WestEnd | 220 | 80 | 82 | 110 | 200 | 285 | 17 | 215 | Holborn |
| ibis STYLES London Excel | 218 | 118 | 118 | 136 | 150 | 203 | 4 | 305 | Custom house (DLR) |
| Hilton London Kensington | 200 | n/a | 120 | 300 | 400 | 528 | 14 | 601 | Shepherd's Bush |
| Kingsway Hall | 200 | 126 | 130 | 180 | 250 | 30 | 11 | 170 | Holborn |
| Park Plaza Waterloo | 190 | 100 | 110 | 160 | 200 | 715 | 6 | 494 | Waterloo |
| DoubleTree by Hilton Hotel London- Westminster | 180 | 96 | 70 | 130 | 200 | 198 | 11 | 460 | Westminster |
| Melia White House | 180 | 77 | 100 | 100 | 200 | 149 | 9 | 693 | Regents Park |
| Amba Hotel Charing Cross | 170 | 100 | 130 | 150 | 200 | 174 | 9 | 239 | Charing Cross |
| DoubleTree by Hilton Hotel London- Victoria | 160 | 100 | 100 | 120 | 200 | 216 | 8 | 225 | Victoria |

(m - feet conversion 1m = 3.280ft)
T - Theatre CA - Cabaret CL - Classroom B - Banquet R - Reception (NR) - National Rail (OV) - Overground (DLR) - Docklands Light Railway

Hotels With Meeting Spaces

| Hotel | T | CA | CL | B | R | Max Sqm | Meeting Rooms | Bed Rooms | Closest Tube |
|--|-----|-----|-----|-----|-----|---------|---------------|-----------|--------------------|
| Hotel Café Royal London | 160 | 63 | 60 | 120 | 230 | 176 | 6 | 160 | Piccadilly Circus |
| London Marriott Hotel Marble Arch | 150 | 72 | 100 | 120 | 200 | 171 | 7 | 240 | Marble Arch |
| Millennium Hotel London Knightsbridge | 130 | 70 | 85 | 100 | 160 | 131 | 4 | 222 | Knightsbridge |
| Thistle City Barbican | 130 | 100 | 70 | 144 | 200 | 172 | 13 | 463 | Old Street |
| Conrad London St James | 120 | n/a | 60 | 220 | 300 | 270 | 7 | 256 | St James Park |
| St Martins Lane | 120 | 64 | 50 | 170 | 400 | 130 | 8 | 204 | Leicester Square |
| The Connaught | 120 | 60 | 70 | 120 | 200 | 151 | 7 | 121 | Bond Street |
| The Grosvenor | 120 | 72 | 70 | 100 | 150 | 8.21 | 9 | 345 | Victoria |
| Hilton London Euston | 110 | n/a | 70 | 90 | 120 | 227.7 | 11 | 159 | Euston |
| Hilton London Green Park | 110 | n/a | 60 | n/a | 110 | 117.2 | 4 | 163 | Green Park |
| Radisson Blu Edwardian, Grafton | 110 | 64 | 50 | 100 | 150 | 102.7 | 11 | 330 | Warren Street |
| Radisson Blu Edwardian, Kenilworth | 110 | 64 | 45 | 90 | 120 | 137.3 | 06-Jan | 186 | Tottenham Court Rd |
| Sunborn London | 110 | 70 | 70 | 200 | 250 | 170 | 6 | 131 | Custom House (DLR) |
| DoubleTree by Hilton Hotel London- Marble Arch | 100 | 56 | 54 | 40 | 180 | 100.33 | 8 | 121 | Marble Arch |
| Novotel London Blackfriars | 100 | 36 | 54 | 50 | 100 | 84 | 7 | 182 | Blackfriars |
| Novotel London City South | 100 | n/a | 46 | 72 | 100 | n/a | 6 | 182 | London Bridge |
| Park Plaza County Hall London | 100 | 64 | 60 | 80 | 100 | 86 | 6 | 399 | Waterloo |
| Radisson Blu Edwardian, Hampshire | 100 | 50 | 48 | 66 | 120 | 108 | 6 | 127 | Leicester Square |
| Radisson Blu Edwardian, Vanderbilt | 100 | 54 | 54 | 90 | 120 | 96.6 | 12 | 215 | Gloucester Road |
| Thistle Euston | 100 | 54 | 45 | 60 | 80 | 80 | 6 | 362 | Euston |
| Warren House | 100 | 80 | 56 | 100 | 100 | 11.66 | 9 | 46 | Norbiton (NR) |
| Novotel London Greenwich | 92 | 60 | 50 | 40 | 120 | 110 | 6 | 151 | Cutty Sark (DLR) |
| DoubleTree by Hilton Hotel London- Islington | 90 | n/a | 40 | 60 | n/a | 106 | 4 | 372 | Angel |
| Novotel London Tower Bridge | 90 | n/a | 36 | 64 | n/a | 90 | 8 | 203 | Tower Hill |
| Apex London Wall Hotel | 80 | 30 | 36 | 60 | 100 | 63.3 | 3 | 209 | Tower Hill |
| The Athenaeum | 80 | 35 | 25 | 60 | 80 | 8.09 | 3 | 168 | Green Park |
| Cliveden | 80 | 24 | n/a | 60 | 80 | n/a | 6 | 45 | Taplow (NR) |
| H10 London Waterloo | 80 | 35 | 40 | 120 | 240 | 269 | 4 | 177 | Waterloo |
| London Bridge Hotel | 80 | 42 | 36 | 80 | 120 | 103 | 5 | 138 | Borough High St. |
| London Marriott Hotel County Hall | 80 | 40 | 40 | 60 | 90 | 262 | 12 | 200 | Westminster |
| Novotel London Excel | 80 | n/a | 56 | 70 | n/a | 70 | 13 | 257 | Custom House (DLR) |
| The Metropolitan | 80 | 35 | 40 | 60 | 180 | 112 | 7 | 144 | Hyde Park Corner |
| The Park Tower Knightsbridge | 80 | 30 | 50 | 120 | 150 | 167 | 5 | 280 | Knightsbridge |

(m - feet conversion 1m = 3.280ft)
T - Theatre CA - Cabaret CL - Classroom B - Banquet R - Reception (NR) - National Rail (OV) - Overground (DLR) - Docklands Light Railway

Hotels With Meeting Spaces

| Hotel | T | CA | CL | B | R | Max Sqm | Meeting Rooms | Bed Rooms | Closest Tube |
|--|---------------------|-----|-----|-----|-----|---------|---------------|-----------|---------------------|
| Thistle Holborn, The Kingsley | 80 | 40 | 40 | 60 | 100 | 87 | 7 | 129 | Holborn |
| The Good Hotel | 70 | n/a | 22 | 30 | 120 | 65 | 4 | 148 | Royal Victoria |
| Park Plaza Sherlock Holmes Hotel | 70 | 32 | 30 | 44 | 60 | 46 | 7 | 119 | Baker Street |
| London Marriott Hotel Park Lane | 60 | 46 | 36 | 40 | 60 | 80 | 3 | 152 | Marble Arch |
| Mercure London Bridge | 60 | 50 | 40 | 80 | 120 | 132 | 7 | 144 | London Bridge |
| The Marylebone Hotel | 60 | 36 | 50 | 48 | 80 | 96 | 6 | 257 | Baker Street |
| W London- Leicester Square | 56 | 35 | n/a | 50 | 80 | 84.2 | 3 | 192 | Leicester Square |
| Millennium at Chelsea FC | 50 | 32 | 24 | 150 | 200 | 202 | 7 | 281 | Fulham Broadway |
| One Aldwych | 50 | 28 | n/a | 50 | 80 | 86 | 4 | 105 | Covent Garden |
| Radisson Blu Edwardian, Mercer Street | 50 | 25 | 24 | 40 | 40 | 52 | 6 | 137 | Covent Garden |
| Sanderson | 50 | 32 | 36 | 80 | 300 | 208 | 2 | 150 | Goodge Street |
| The Goring | 50 | 20 | n/a | 44 | 100 | 85 | 4 | 69 | Victoria |
| The Halkin | 50 | 20 | n/a | 46 | 90 | 93 | 2 | 41 | Hyde Park Corner |
| The Stafford London | 50 | 18 | 16 | 44 | 70 | 61 | 5 | 105 | Green Park |
| Thistle Kensington Gardens | 45 | 24 | 30 | 40 | 150 | 52 | 3 | 175 | Queensway |
| Novotel London Waterloo | 40 | n/a | 24 | 24 | n/a | 50 | 6 | 187 | Waterloo |
| The Trafalgar | 40 | 22 | n/a | n/a | 50 | 4.57 | 3 | 129 | Charing Cross |
| Hampton by Hilton Waterloo | 40 | 10 | 20 | 110 | 150 | 17.65 | 4 | 297 | Waterloo |
| K+K Hotel George | 37 | 25 | 23 | 80 | 150 | 90 | 4 | 154 | Earls Court |
| Aloft London Excel | 30 | 12 | n/a | n/a | 40 | 47 | 6 | 252 | Prince Regent (DLR) |
| citizenM Hotel Bankside | 30 | n/a | n/a | n/a | n/a | 40 | 3 | 192 | Southwark |
| Hilton London Hyde Park | 30 | n/a | 14 | n/a | n/a | 4.5 | 1 | 136 | Queensway |
| Saint Georges Hotel | 30 | n/a | n/a | 100 | 170 | 40 | 2 | 95 | Oxford Circus |
| Thistle Bloomsbury Park | 30 | 10 | 20 | 30 | 70 | 10.13 | 1 | 95 | Russell Square |
| Thistle Hyde Park | 30 | 16 | 20 | 25 | 40 | 3.52 | 3 | 54 | Lancaster Gate |
| The Arch London | 25 | n/a | n/a | 40 | 50 | 65 | 3 | 82 | Marble Arch |
| Hilton London Angel Islington | n/a | n/a | n/a | 82 | 140 | n/a | 1 | 188 | Angel |
| No. 11 Cadogan Gardens | n/a | n/a | n/a | 60 | 60 | n/a | 7 | 56 | Sloane Square |
| Radisson Blu Edwardian, Berkshire | n/a | n/a | n/a | n/a | n/a | n/a | n | 149 | Bond Street |
| Radisson Blu Edwardian, Sussex | n/a | n/a | n/a | 12 | n/a | 15 | 2 | 101 | Marble Arch |
| The Hari | n/a | n/a | n/a | 24 | 180 | 200 | 2 | 85 | Knightsbridge |
| Thistle Trafalgar Square | n/a | n/a | n/a | n/a | n/a | n/a | n/a | 108 | Charing Cross |
| Radisson Blu Edwardian, Leicester Square | Under refurbishment | | | | | | | | Leicester Square |
| Belmond, Cadogan Hotel | Opening in 2017 | | | | | | | | Sloane Square |
| | | | | | | | | | |

(m - feet conversion 1m = 3.280ft)
T - Theatre CA - Cabaret CL - Classroom B - Banquet R - Reception (NR) - National Rail (OV) - Overground (DLR) - Docklands Light Railway

Accommodation Only

| Property | Total bedrooms, suites or apartments | Closest Tube |
|---|--------------------------------------|------------------------|
| Imperial College London (Summer Only) | 2000 | Across West London |
| University of Arts London (Summer Only) | 1000 | Holborn |
| Generator Hostel London | 870 | Russell Square |
| LSE Bankside House (Summer Only) | 617 | Southwark |
| LSE High Holborn Residence (Summer Only) | 447 | Holborn |
| DoubleTree by Hilton Hotel London- Docklands Riverside | 378 | Canada Water |
| LSE Northumberland House (Summer Only) | 340 | Charing Cross |
| Smart Space - Russell Square | 340 | Russell Square |
| LSE Rosebery Hall (Summer Only) | 339 | Angel |
| Smart Space - Hyde Park Inn | 320 | Queensway |
| Palmers Lodge | 270 | Willesden Green |
| DoubleTree by Hilton Hotel London- Excel | 260 | Prince Regent |
| Smart Space - Hyde Park View | 260 | Marble Arch |
| DoubleTree by Hilton Hotel London- Hyde Park | 228 | Queensway |
| LSE Grosvenor House (Summer Only) | 227 | Covent Garden |
| LSE Passfield Hall (Summer Only) | 226 | Euston Square |
| The Bailey's London | 210 | Gloucester Road |
| DoubleTree by Hilton Hotel London- Kensington | 203 | South Kensington |
| DoubleTree by Hilton Hotel London- Chelsea | 172 | Parsons Green |
| LSE Carr-Saunders Hall (Summer Only) | 160 | Goodge Street |
| Cheval Three Quays | 159 | Tower Hill |
| DoubleTree by Hilton Hotel London- Kingston upon Thames | 146 | Richmond |
| Hampton by Hilton Croydon | 120 | East Croydon (NR) |
| Smart Space - Camden Inn | 120 | Camden Town |
| Cheval Gloucester Park | 100 | Gloucester Road |
| The Westbridge Hotel | 80 | Stratford |
| Cheval Thorney Court | 58 | High Street Kensington |
| Cheval Knightsbridge | 46 | Knightsbridge |
| Kent Hall Hotel | 39 | Manor House |
| The Beaver Hotel | 38 | Earls Court |
| Crystal Hostels- Duke of Leinster | 36 | Bayswater |
| Cheval Phoenix House | 33 | Sloane Square |
| St David & Norfolk Court | 26 | Paddington |
| Apartments - Chelsea | 8 | Sloane Square |
| Apartments - Marylebone | 5 | Baker Street |
| The Westbridge Hotel | 80 | Stratford |
| Cheval Thorney Court | 58 | High Street Kensington |
| Cheval Knightsbridge | 46 | Knightsbridge |
| The Sheriff Hotel | 45 | Victoria |

Accommodation Only

| Property | Total bedrooms, suites or apartments | Closest Tube |
|-----------------------------------|--------------------------------------|---------------|
| Kent Hall Hotel | 39 | Manor House |
| The Beaver Hotel | 38 | Earls Court |
| Crystal Hostels- Duke of Leinster | 36 | Bayswater |
| Cheval Phoenix House | 33 | Sloane Square |
| St David & Norfolk Court | 26 | Paddington |
| Apartments - Chelsea | 8 | Sloane Square |
| Carlton Court Apartments | 6 | Green Park |
| Apartments - Marylebone | 5 | Baker Street |
| | | |
| | | |
| | | |
| | | |

Homestay

| Property | Total Bedrooms, Suites or Apartments | Closest Tube |
|-------------------------------------|--------------------------------------|--------------|
| Airbnb | Various | Various |
| Coach House London Vacation Rentals | 38 properties with over 86 bedrooms | Various |
| Happy Homes | Various | Various |
| Homestay.com | Various | Various |

| |
|--|
| |
|--|

| |
|--|
| |
|--|

Airport Hotels

| Hotel | T | CA | CL | B | R | Max Sqm | Meeting Rooms | Bed Rooms | Closest Tube |
|---|------|-----|-----|-----|------|---------|---------------|-----------|-------------------------------|
| Sofitel London Heathrow | 1300 | 650 | 750 | 900 | 1500 | 1309 | 45 | 605 | Heathrow Terminal 5 |
| Hilton London Heathrow Airport Terminal 5 | 1200 | 480 | 430 | 816 | 1200 | 840 | 14 | 350 | Heathrow Terminal 5 |
| Radisson Blu Edwardian, Heathrow | 700 | 400 | 350 | 550 | 700 | 502 | 32 | 459 | Heathrow Terminal 123 |
| Hilton London Gatwick | 500 | 150 | 250 | 360 | 50 | 385.53 | 21 | 821 | Gatwick Airport National Rail |
| Hilton London Heathrow Airport Terminal 4 | 250 | 115 | 150 | 170 | 300 | 201.78 | 30 | 398 | Heathrow Terminal 4 |
| DoubleTree by Hilton Hotel London- Heathrow Airport | 70 | 50 | 30 | 50 | 70 | n/a | 6 | 200 | Heathrow Terminal 123 |
| Hilton Garden Inn London Heathrow Airport | 60 | 32 | 25 | 40 | 60 | 67.72 | 7 | 364 | Hatton Cross |

| |
|--|
| |
|--|

| |
|--|
| |
|--|

| |
|--|
| |
|--|

| |
|--|
| |
|--|

| |
|--|
| |
|--|

| |
|--|
| |
|--|

| |
|--|
| |
|--|

(m - feet conversion 1m = 3.280ft)
T - Theatre CA - Cabaret CL - Classroom B - Banquet R - Reception (NR) - National Rail (OV) - Overground (DLR) - Docklands Light Railway

Professional Conference Organisers (PCO's)

Professional Conference Organisers (PCOs) collaborate with National and International Associations to help them deliver their conferences successfully. They provide end to end planning and logistics especially financial management and delegate and sponsorship acquisition.

| Company |
|-------------------|
| Kenes UK |
| MCI Group UK Ltd. |
| Meeting Makers |
| TFI Group |
| Zibrant |

Destination Management Companies (DMC's)

Specialise in the delivery of events, tours, staffing and transport, utilising extensive local knowledge, expertise and resources.

| Company | Description |
|---|---|
| 2B-UK | North America and Australia Market specialist |
| AC Tours | Destination management for UK, Ireland, Paris & Amsterdam |
| AC Travel Group | Scandinavian/Nordic market specialists |
| All In One Tours Ltd | Specialise in german groups |
| Ampersand Travel | Asia speciality |
| Artisan Pro | Event and destination management UK and internationally |
| Atlas Travel Solutions | All markets |
| Ben Thompson Events Ltd | Sporting corporate hospitality |
| Blue Ribbon Events Ltd | Smaller groups - very creative |
| Brook Green UK DMC | Belgian and Dutch speciality |
| Business Services International UK Ltd | Russian Speaking |
| China Britain Travel Group | Chinese specialist inbound groups |
| E-Voyages | Specialise in French groups |
| Kuoni Travel Ltd - Destination Management | Offices in other parts of the world so can help with anything |
| Liberty International GB Ltd | Italian speciality, but also have offices in Europe, Brazil and Middle East |
| Principal. London DMC | Corporate EU, North American and Asian market |
| Spectra | 90% North American business |
| Sterling Travel Ltd | European and North American business |
| Tumlare | European business |
| Wedgewood Britain | Offices all over the world, Europe, Africa, Brazil |
| Zibrant | All markets |

| |
|--|
| |
|--|

| |
|--|
| |
|--|

Event Management Companies (EMC’s)

Specialise in the creation and delivery of all aspects of your event, including strategic marketing, budgeting, logistics, and branding.

| Company | Description |
|--------------------------|--|
| George P Johnson Company | World's largest event marketing agency |
| GroupSe7en Events | Delivering global meetings and event planning services |
| innovision events | Live event delivery |
| JL Event Management | EMC providing staffing solutions for events |
| Smyle | Brand focused live events |
| Worldspan | Global event management and creative communications |

Service Providers

Our service provider partners offer a range of additional services for events.

| Company | Description |
|--|--|
| Aggreko | Generator and chiller hire |
| AKA promotions Ltd | Global entertainment marketing & advertising agency for the live entertainment, arts and culture |
| Association of Professional Tourist Guides | Tourist guides |
| BRAL | Tax refund for events |
| Conference Interpreters UK (Members of AIIC) | Translation Services |
| Disabled Access Holiday | Travel agent and travel services for disabled people in the UK |
| DisabledGo | Access information for disabled people in the UK |
| Encore Tickets Ltd | Event ticket seller |
| Excess Baggage | Baggage shipping and storage services |
| Guild of Registered Tourist Guides | Blue Badge guides |
| Hiscox Event Insurance | Insurance Providers |
| Made Travel | Tourism Marketing, Representation and PR Company |
| Maxima Training Development Ltd | Training |
| Moore People Event Staffing | Hosting and Support Staff |
| Open Exhibitions | Exhibition stand design and build contractor |
| Q-Park | City parking throughout the UK |
| Showslice | Sharing event infrastructure |
| SMG Insight | Sport and sponsorship research |
| Sternberg Clarke | Entertainment Provider |
| The Leisure Pass Group | Sightseeing and tourism technology specialist, which develops and manages The London Pass |
| Travel Maps London | Maps for London |

Caterers

| Company |
|------------------------------|
| Berkeley Catering |
| Create Food and Party Design |
| Lime Venue Portfolio |
| Moving Venue |
| Peyton Events |

Group Activities

| Activity | Description | Max Group Size | Location |
|-------------------------------|--|----------------|---------------------|
| City Academy | Team Building, Event animation, Learning and Development | n/a | Various |
| Cookery School | Guided group cooking | 50 | Oxford Circus |
| Go Ape Battersea | Interactive Forest Adventure Park | 300 | Battersea Park |
| Go Ape Trent Park | Interactive Forest Adventure Park | 80 | Uxbridge |
| KidZania London | Real life role- play activities | 1,000 | White City |
| Lee Valley White Water Centre | White water rafting, kayaking and canoeing | 54 | Waltham Cross |
| Locked in a Room | Live escape game style activities | 78 | Custom House |
| Royal Shakespeare Company | Theatre | n/a | Multi locations |
| small car BIG CITY | Classic Mini Cooper Hire in London for events | 24 | Trafalgar Square |
| Thames Jets | Speed boats on the river | 12 | Optional |
| Thames RIB Experience | Speed boats on the river | 12 | Waterloo/Tower Hill |
| Thames Rockets | Speed boats on the river | 12 | Optional |
| Up at The O2 | Climb the O2 | 16 | North Greenwich |
| Wildgoose Events | Employee engagement and team events worldwide | n/a | Various |

Transport

| Company | Description |
|-------------------------------|--|
| Diamond Air International | Luxury Travel and Transfers |
| Eurostar International Ltd | High speed passenger train from London to Paris and Brussels |
| Gatwick Airport | Airport |
| MyDriver | Chauffeur driven cars and limousines |
| Peter Carol Prestige Coaching | Luxury coaches for business travel |
| Serco Caledonian Sleepers | Overnight to Scotland train travel |
| Southeastern Railway | Passenger trains in the South East |
| Stansted Express | London to Airport Express Train |
| Virgin Trains East Coast | Fast passenger trains |
| Global Transport Services | Chauffeur company providing airport transfers |

Tours

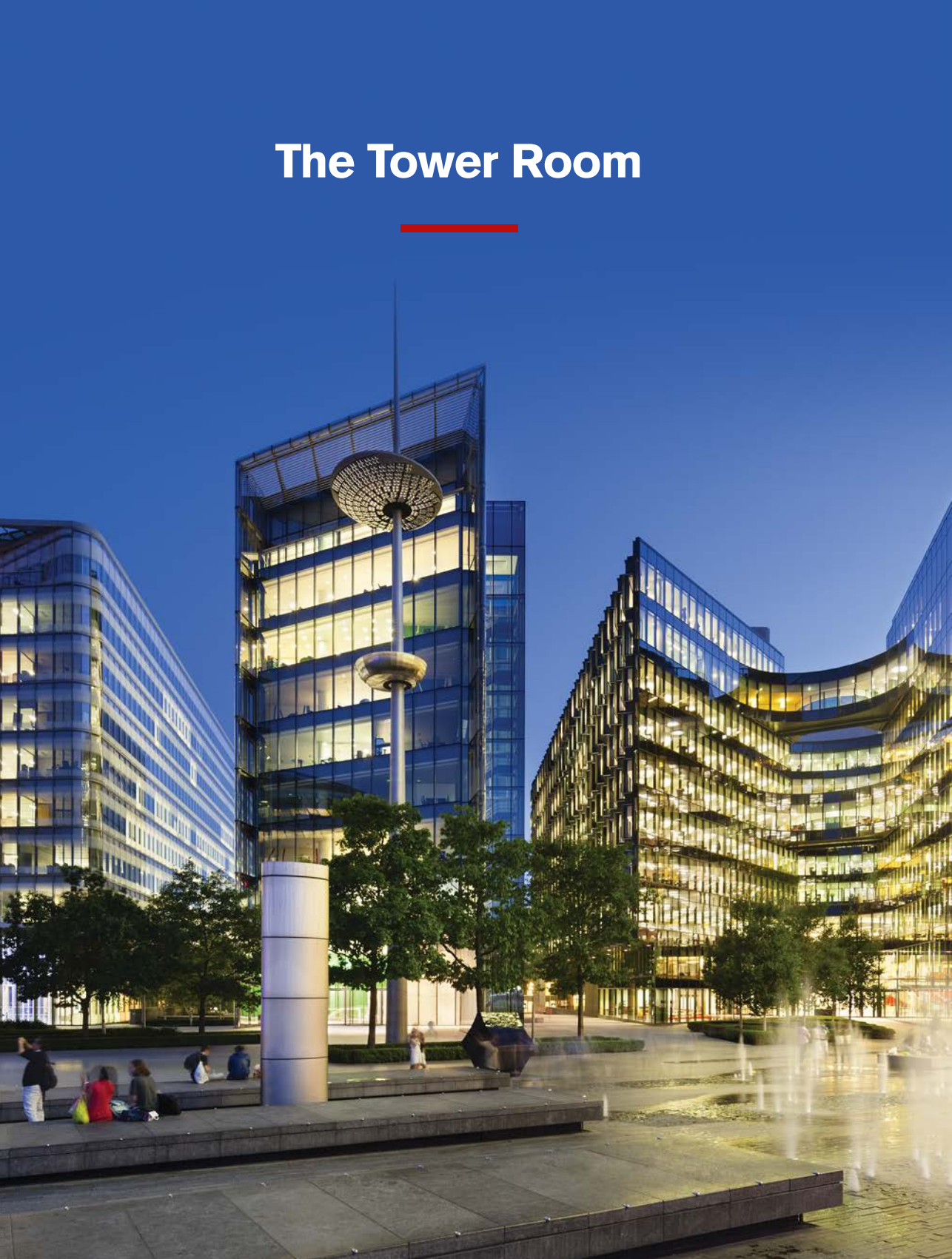
| Company | Max group size | Other Info/Services |
|--------------------------------------|--|---|
| Arsenal FC - Emirates Stadium Tours | Various | Private group tours available |
| Bank of England Museum | Various | Presentation for pre-booked groups |
| Beefeater Distillery | 15 pax per tour, tours every 15 minutes | |
| Big Bus Tours | 100 | |
| Brit Movie Tours | 250 | |
| British Tours | more than 6pax in minibus | Private London Tours |
| Buckingham Palace | Various tour options available | reduced admission for groups of 15+ |
| Discovery Tours & Events Ltd | Jack the Ripper Ghost Walks | |
| Eating London Tours | 12 per group | |
| Fat Tire Tours | 15 per guide, 150 overall group size maximum | |
| Golden Tours | coach and leisure/entertainment tours | |
| It's Your London | Bespoke | |
| London Duck Tours | 30 per 'duck', 8 ducks | Private hire services, but only include the river section during daylight hours |
| London Stadium Tours | Various Options Available | Tours of famous London stadiums |
| London Walks | 35 pax per guide | |
| National Theatre Tours | 20 per group | |
| Sandeman's New London Ltd | 40 per guide | |
| See World | various | Chinese tour guide association |
| Society of London Theatre (SOLT) | 30 per group | theatreland walking tours |
| The London Helicopter | 5 pax per helicopter | |
| The Original London Sightseeing Tour | 96 pax per bus | |

Tours

| Company | Max group size | Other Info/Services |
|------------------------------|----------------|--------------------------------|
| Wembley Stadium Tour | various | 15% discount for groups of 25+ |
| Wimbledon Lawn Tennis Museum | 45 per guide | |
| Windsor Castle | 15 per group | |

Restaurants

| Venue | Exclusive hire dinner | Reception | Private dining | Closest Tube |
|--------------------------------------|-----------------------|-----------|----------------|-------------------|
| Skylon | 500 | 300 | 60 | Waterloo |
| Planet Hollywood | 355 | 800 | n/a | Piccadilly Circus |
| Rainforest Cafe | 335 | 650 | 100 | Piccadilly Circus |
| Fire and Stone Covent Garden | 250 | 350 | 30 | Leicester Square |
| Bubba Gump Shrimp Company | 250 | 250 | n/a | Piccadilly Circus |
| Smith & Wollensky | 247 | 360 | 50 | Charing Cross |
| Boisdale Canary Wharf | 230 | 500 | 40 | Canary Wharf |
| Hard Rock Cafe | 230 | 470 | 120 | Hyde Park Corner |
| Fortnum and Mason | 220 | 300 | 60 | Green Park |
| Cafe in the Crypt | 200 | 350 | n/a | Charing Cross |
| Garfunkel's | 200 | 350 | 200 | Various |
| Boisdale Belgravia | 140 | 200 | 22 | Victoria |
| Cinnamon Kitchen & Anise | 140 | 250 | 16 | Liverpool Street |
| Cinnamon Club | 130 | 300 | 60 | St James Park |
| The Orange | 120 | 60 | 60 | Pimlico |
| Percy & Founders | 100 | 60 | 40 | Goodge Street |
| Spaghetti House Group of Restaurants | 100 | n/a | 90 | Various |
| Boisdale Bishopsgate | 80 | 120 | n/a | Liverpool Street |
| Tuttons Brasserie Ltd | 65 | 65 | 50 | Covent Garden |
| Masala Zone Bayswater | 50 | n/a | 36 | Royal Oak |
| Masala Zone Camden Town | 50 | n/a | 30 | Camden Town |
| Masala Zone Covent Garden | 50 | n/a | 55 | Covent Garden |
| Masala Zone Islington | 50 | n/a | 20 | Angel |
| Boisdale Mayfair | 45 | n/a | 22 | Marble Arch |
| Cinnamon Soho | 40 | 150 | 35 | Oxford Circus |
| Masala Zone Soho | 24 | n/a | 24 | Oxford Circus |
| Dirty Martini Islington | n/a | 200 | n/a | Oxford Circus |
| Dirty Martini Monument | n/a | 350 | n/a | Monument |



The Tower Room



Located on the 6th Floor at 2 More London Riverside, The Tower Room offers stunning views and the versatility to accommodate a variety of events from conference, theatre and cabaret style meetings to corporate events, receptions, product launches and workshops.

With 180 degree views over the River Thames, the Tower of London and iconic Tower Bridge, the room features natural daylight complete with blackout blinds, and is fully equipped with high tech AV equipment and Wi-Fi.

An interactive video wall provides cutting edge technology, whilst creating a collaborative working environment. Whether you're brainstorming strategies with digital post it stickers, or simply displaying your presentation on a giant screen, it will not fail to impress.

A room with a view

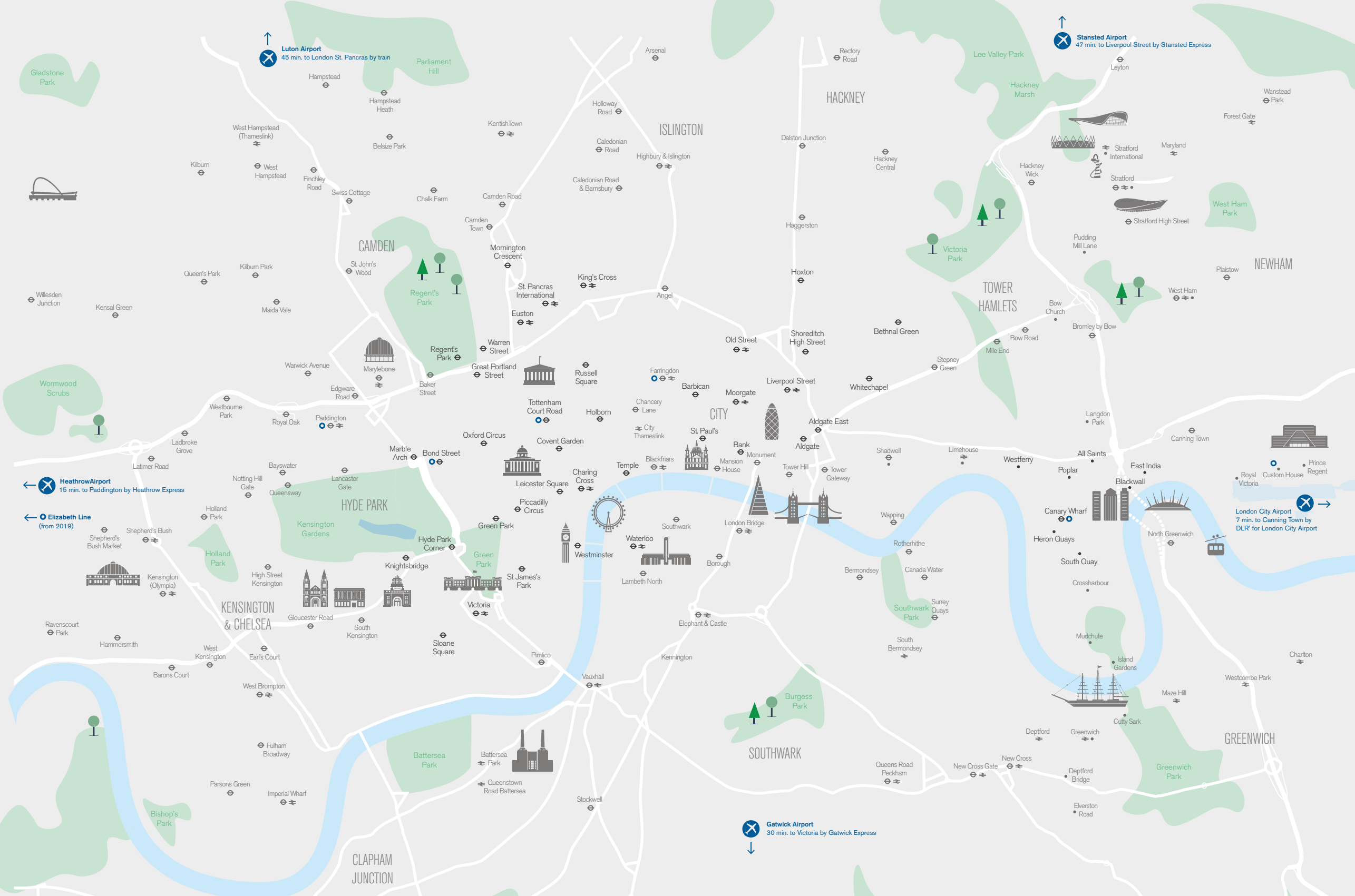


A list of preferred caterers offer a range of options from breakfast, working lunches, evening canapé receptions and seated dinners.

| | |
|-------------------------------------|--------------|
| Theatre 50 | Cabaret 35 |
| Classroom 24 | Banquet 25 |
| Reception 80 | Boardroom 25 |
| Max. meeting space 86m ² | |

For more information email conventionbureau@londonandpartners.com
+44 (0) 20 7234 5833





Luton Airport
45 min. to London St. Pancras by train



Stansted Airport
47 min. to Liverpool Street by Stansted Express



Heathrow Airport
15 min. to Paddington by Heathrow Express



Elizabeth Line
(from 2019)



London City Airport
7 min. to Canning Town by DLR for London City Airport



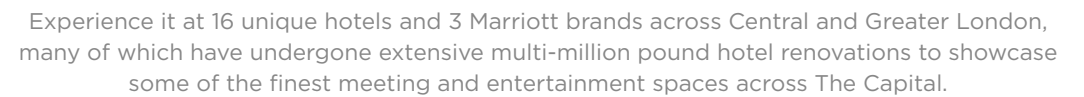
Gatwick Airport
30 min. to Victoria by Gatwick Express

Night tubes are available Friday and Saturday on some lines and the Elizabeth Line is currently under construction. Visit tfl.gov.uk for more information.

Correct at time of going to print



EVERY MEETING AND EVENT HAS A PURPOSE
THAT PURPOSE IS DRIVEN BY PEOPLE — YOU; MEETING PLANNERS,
MEETING LEADERS AND ATTENDEES.



MARRIOTTEVENTS.CO.UK





London's best themed venues

ideal for dinners, meetings, VIP after hours tours
and parties for up to 1000 guests

www.merlineventslondon.com • 0207 487 0224



Drinks Reception at Madame Tussauds



Hospitality on the London Eye



Awards Dinner at Madame Tussauds