

# LONDON

EVENT PLANNER GUIDE 2017



LONDON®  
& PARTNERS

A STAGE FOR  
GAME-CHANGERS AND  
INNOVATORS SINCE 1986



# SPACE TO MEET, INSPIRE & CELEBRATE



## Contents

<b>Welcome to London</b>	<b>4</b>
<b>How we can help</b> London & Partners contact details	<b>5</b>
<b>London's highlights</b>	<b>6</b>
<b>Partner index</b>	<b>14</b>
Exhibition Centres	14
Venues	14-16
Attraction Venues	16-17
Academic Venues	18
Riverboats	18
Hotels With Meeting Spaces	18-22
Accommodation Only	22-24
Homestay	24
Airport Hotels	24
PCO's	25
DMC's	25
EMC's	26
Service Providers	26
Caterers	27
Transport	27
Group Activities	27
Tours	28
Restaurants	29
<b>The Tower Room</b>	<b>30</b>
<b>London map</b>	<b>32</b>
<b>London Tube map</b>	<b>35</b>

Discuss how we can help bring your event to life.  
0844 414 5391 [info@qeicentre.london](mailto:info@qeicentre.london) [www.qeicentre.london](http://www.qeicentre.london)





# Welcome to London

*London is a destination like no other.*

It's a city where heritage and technology collide; where venues steeped in history and grandeur stand tall among towering skyscrapers which captivate the skyline; and where world-famous museums and galleries rub shoulders with Michelin-starred restaurants. It's also a city leading the way in innovative event concepts and solutions and home to cutting-edge industry clusters, which make the city a vibrant and innovative business event destination with access to top speakers and quality delegates.

The city is home to more than 1,000 diverse venues, from blank canvas warehouse spaces and trendy pop

ups, to purpose built conference centres and state-of-the-art auditoriums. Additionally there are over 139,000 hotel rooms from budget to boutique. Whether it's for 10 people or 35,000, an exclusive incentive programme or a city-wide tech event – London has it all.

The London Event Planner Guide 2017 will navigate you through some of the best experiences London has to offer, providing a comprehensive index and capacity guide of London's accommodation, attractions, venues and services.

## How we can help

**London & Partners is the official convention bureau for London. We work with event professionals, meeting organisers and incentive planners to help you achieve the most out of London's venues, hotels and support services.**



By speaking to our expert team you can access the very best free advice for creating a lasting event legacy in London. We work closely with you to unlock the city, find the right venues, plan site inspections, and connect you with the ideal solution. The result? An event that will surpass your greatest expectations and meet your objectives.

For useful resources, regular features on what's new in London, details of where to meet the team, or to submit an RFP, visit: [conventionbureau.london](http://conventionbureau.london)

If you're interested in organising an industry specific event, you can also visit [conventionbureau.london/cutting-edge](http://conventionbureau.london/cutting-edge)

**Convention Bureau**  
London & Partners  
+44 (0) 20 7234 5833  
[conventionbureau@londonandpartners.com](mailto:conventionbureau@londonandpartners.com)

**US office**  
+1 212 850 0366  
[clynn@londonandpartners.com](mailto:clynn@londonandpartners.com)

 [London & Partners Convention Bureau](#)  
 [@London\\_CVB](#)





# London's highlights

---

*Our expert team have created these inspirational itineraries to give you a snapshot of what London has to offer your clients.*



## Incentives

*London's incentive offering is exciting and inspiring, from action packed activities to some more relaxing things to do.*

Here are our top tips:

**Up at The O2** offers a chance to view London from the roof of the arena (boots and ropes are provided) or within **The O2 arena** is **Brooklyn Bowl** for a spot of bowling and refreshments.

If you fancy some water activity, **Thames Rib Experience** provides a fast James Bond style trip up the river with splashes and spray!

**Small car BIG CITY** is new to the city and transports you in vintage mini coopers around the streets of London on treasure trails. May the best team win!

If race tracks are more your thing then **Capital Karts** will work! It's the UK's longest indoor go karting track.

For something a little less active, visit **Madame Tussauds** look-alikes; or **Abbey Road Studios**, the most famous recording studio in the world, where you can practice online mixing, and record your own song.

Discover the **Making of Harry Potter at Warner Bros. Studio Tour London**, where you can immerse yourself in the film artefacts, check out the Creature Effects department and try some butter beer.

**Cookery School at Little Portland Street** is an interactive team building activity where you can improve your cooking skills, and then enjoy the fruits of your labour. This activity is limited to 50 places.

---

London has many **Destination Management Companies**, who can help you to build your incentive programmes, find accommodation and work with you on transport options and off site activities.



## Royal history

*All things 'royal' continues to be a popular London theme as our future King proudly holds the title of 'Londoner of the Decade'.*

To sample London's royal locations, first and foremost head to **Kensington Palace**, the London home of Prince William, Kate, George and Charlotte, where you will tour the Palace's history, including the Gardens and surrounding Royal Park land. A refurbished cafeteria, not to mention the Orangery, offer a wide range of refreshments.

Each year from late July until the end of September, the lavish **State Rooms of Buckingham Palace** open their doors showcasing special exhibitions. **The Royal Mews**, which houses the state coach and horses, is also open from March until October.

From here you can stroll through **St. James Park**, the second of our eight **Royal Parks** across the city, to **Westminster Abbey**, the historic setting of some of the most famous royal weddings and coronations.

Close by **Banqueting House** in Whitehall, is home to the famous Rubens ceiling and you can also stand on the spot where King Charles I was executed in 1649. Further afield from central London, you will find the last two of London's palaces: **Hampton Court**, where King Henry VIII and his doomed queen, Anne Boleyn, once lived. This Palace explores the Tudor era inside its walls, whilst beautiful gardens and a maze will keep you happy for the day.

Last but not least, **Kew Palace** will allow you to catch a glimpse of an intimate royal family retreat. Queen Charlotte's cottage tucked away in **Kew Gardens** was a hidden gem used by the royal family for rest and refreshments during walks.

At the end of this trip you will know everything about London's royal history!

---

Most of these locations offer private hire for events.





## Luxury London

*London has everything you need from luxury hotels and spas to designer shopping and Michelin star restaurants.*

Let's begin in Mayfair, home to many of our top hotels, including the **London Hilton on Park Lane**, the **Intercontinental London Park Lane** and **The May Fair** (Edwardian hotels). And we must not forget the **Sheraton Grand London Park Lane** on Piccadilly, which has just completed a multi-million pound renovation.

Once settled in your hotel, a trip to Bond Street is a must for some retail therapy – here you will find all of the world's biggest luxury brands including Prada, Tiffany's and Burberry. However, if you prefer to take the hassle out of shopping, just book a personal shopping experience at Harrod's By Appointment Service. Individual personal tailoring is a historic trade in London, so if this more for you, head to Savile Row, which dates back to 1938, or Jermyn Street in the heart of St James's, one of London's most historic shopping districts.

Afternoon tea at the **Corinthia** will be a welcome distraction from all that shopping and then it's straight to **ESPA Life** for that important massage and pamper before pre dinner drinks.

Mayfair is again where you will find some of the top restaurants such as **Alain Ducasse at the Dorchester**, **Hélène Darroze at the Connaught** and **AVISTA at the Millennium Mayfair** by Arturo Granato. **Le Gavroche**, **Hibiscus**, and **Sketch** are also close by, whereas just a stone's throw away in Knightsbridge, you will find **Marcus Wareing at the Berkeley** and **Dinner by Heston Blumenthal at the Mandarin Oriental**.

The choice of pillows in your hotel will be the last decision you need to make today!

## London up high

*London's skyline is forever changing, take a look at these ideas for an exciting trip!*

We begin in **Greenwich Park**, where the view from the **Royal Observatory** to Canary Wharf and beyond is second to none. The city's skyscrapers tower over the Royal Borough and make you want to stay and experience the attractions on offer. Stroll down towards the **National Maritime Museum**, **Old Royal Naval College**, **Queen's House** and the **Cutty Sark**. It's almost too much to take in, so there are plenty of places for coffee or lunch before taking the **MBNA Thames Clipper** river taxi to your next location.

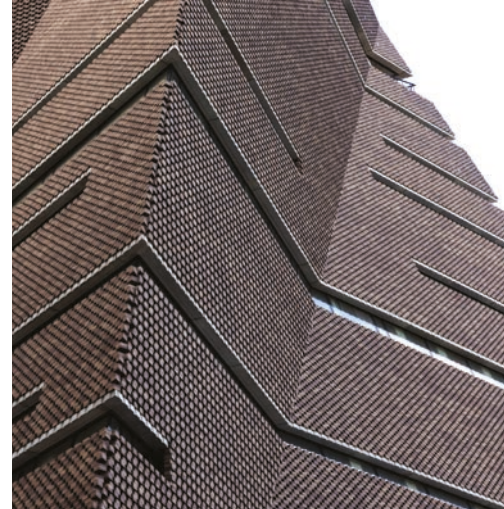
Next up is the **Shard** in all its glory, where you can rocket right to the top, or just go half way and have afternoon tea at the **Shangri-La**.

A short walk down the river will take you to the **Coca Cola London Eye**, where you can take a 45-minute flight and see London from east to west. It's worth mentioning that groups can also have champagne and canapes in the pods.

**ME London** is the final stop for drinks at sunset in the **Radio Rooftop Bar**. **STK London** on site is perfect for dinner and then you are done!

## New London

*No other city continues to evolve in the way that London does. Earlier this year **Tate Modern** opened its doors to its new extension. 336,000 individually laid bricks, and an outdoor terrace on the tenth floor provides the setting for some very fine art exhibitions. There are also new dedicated event spaces for those looking for some blank canvas space.*

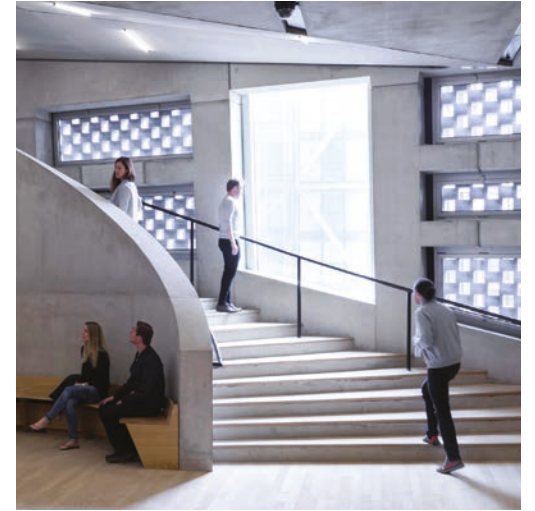


On the opposite side of the street, the **Hilton London Bankside** continues to be Hilton's newest opening in the capital, ideal for a bite to eat or staging an event.

On the London culture scene, the new **Design Museum** opened its doors in November 2016 in its new home on Kensington High Street. New exciting event spaces are promised!

Hotel numbers keep rising with the opening of the **Four Seasons Hotel at Ten Trinity Square** in December 2016, and more recently, the **Intercontinental London - The O2** opened its doors offering a ballroom for up to 3,000 people.

Accommodation in London is not just restricted to hotels however, **Airbnb** now offer group business travel and are keen to embrace the events market.



**Camm and Hooper's Victorian Bath House** is one of London's most exclusive hideouts, with capacities of up to 150 in a very special setting on **Bishopsgate Churchyard**. **Six Storeys on Soho** has also been restored to its former glory - the townhouse will host six floors of decadence: elegant bars, a relaxed dining style and private rooms.

Last but not least, etc. venues – **County Hall** will launch in early 2017, providing their largest and most ambitious event space to date; 43,000 sq ft consisting of 20 rooms, some with uninterrupted views of the River Thames, Big Ben and the Houses of Parliament, is eagerly awaited amongst event planners around the world.

**Park Plaza Hotels** and the **Marriott County Hall** surround this venue so that bedrooms will never be in short supply.



## Cultural London

When it comes to culture, London has it all. From museums and galleries, modern and traditional to attractions and much more, you will never tire of art and sculpture. Most attractions are free, with the exception of some special exhibitions which we recommend you book in advance.

Here are our top tips:

If paintings are your thing, then the **National Gallery**, and **Portrait Gallery** on Trafalgar Square plus the **Royal Academy of Arts** on Piccadilly are all a must see. All galleries have cafeterias to keep you refreshed. **Tate Britain** and the **Wallace Collection** should also be on your list.

Art comes in many forms, and London meets the challenge with a difference in the **Saatchi Gallery** and **Ripley's Believe it or Not**. Both will leave you wanting more, so **Newport Street Gallery** in Vauxhall presents work from Damien Hirst's art collection. This will leave you satisfied.

If you prefer museums and history, then choose from the **Natural History Museum**, **Victoria & Albert** or **Science Museum** in Kensington. All are amazing events venues as well. But don't forget the **British Museum**, **IWM**

**London** and **Shakespeare's Globe** where you can combine a visit to the artefacts with an arty performance. Top attractions also include the **Tower of London** with its crown jewels tour, **Tower Bridge** where you can walk on a section of glass floor, and the **London Transport Museum**, where you can take in transport through the decades.

Music is a big part of our city, and you will find the best of this at **The O2 arena** in North Greenwich where the biggest acts come to town often filling the 20,000 seater auditorium.

Smaller more exclusive gigs take place in **Indigo at The O2**, and there's a multitude of restaurants and bars for afterwards, including **Building Six** nightclub, if you fancy a boogie.

Last but not least, many theatres around London are showcasing new musicals and plays including some of which have been around for several years. Check out [visitlondon.com](http://visitlondon.com) for a current viewing list and ticket deals.

**Edwardian Hotels London** have several hotels all over the city, making them the perfect partner for overnight accommodation.

## Value for money London

There is a wealth of opportunities for value, budget options in London. Read on to find out how you can make your pound go further.

Let's start with hotels. From **Travelodge**, with 36 hotels all over the capital, to **Accor**, which include the **Novotel**, **Mercure** and **ibis** brands, there is a multitude of choice. The largest of these is the **Novotel London West**, which features large meeting space and 630 bedrooms for those residential meetings.

Many **Hilton** hotels are located in London, including one of the largest in Europe, the **Hilton London Metropole**. This firm favourite with both event planners and business travellers continues to stay ahead of the game with planned refurbishments. Indeed, its new ballroom has just been unveiled! Also let's not forget the others from **Syon Park** to **Tower Bridge**, the **Waldorf** and the **Trafalgar** to name a few.

**GLH** have 14 hotels in London including 7 **Thistles**, 2 of the new **Amba** brand, and the **Royal Horseguards** in Whitehall. **The Tower**, with views of Tower Bridge and St Katharine's Dock, offers 800 bedrooms and extensive meeting space.

There are also some low cost events spaces e.g. **Friends House**, **Imperial College**, **BMA House** and **The Crystal** which all offer regular deals. And to end the day, why not try the **Rainforest Café** or **Fire and Stone pizzeria** in Covent Garden.

Finally Heathrow offers lower cost options than central London with six great hotels: **Sofitel London Heathrow Terminal 5**; **Hilton London Heathrow Terminal 5** and **Radisson Edwardian Heathrow** amongst them. All have lots of meeting space and a great selection of accommodation without the travel.

## Hidden gems

London is full of surprises. Read on for those best kept secrets.

This journey starts in the **City of London**, the heart of our financial district, steeped in history with over 50 **Livery Halls**, regulating trades since the 14th century. The most famous of all is **Guildhall** with its Great Hall, Library and Art Gallery, a city powerhouse since the 12th century, today it houses state banquets and is the home of the City of London Corporation.

A short cycle ride away on **Santander Cycles** will take you to one of our oldest markets, **Leadenhall**, originally a meat and game market, but now full of different restaurants, pubs and vendors in the original historical setting.

As you move around the city, you will find many new tall glass structures which we have taken into our hearts and renamed - **The Gherkin**, the **Walkie Talkie** and the **Cheesegrater**. At the top of the **Walkie Talkie** sits the **Skygarden**, an oasis of calm and buzz, where you can sip a glass of champagne or feast from a choice of two restaurants.

For an alternative hidden gem tour, travel further east to the **Queen Elizabeth II Olympic Park**, where you can take stock of the developments over the last 4 years. The best view point is undoubtedly the **ArcelorMittal Orbit**, with its new slide back down to the bottom!

Walking around you will find the **London Stadium**, now home to a local football team, the **Aquatics Centre**, training ground to Tom Daley, the **Copper Box** and the **Velodrome**, some of which hold events. A little further afield is the **Lee Valley Regional Park** with its white water rafting course, where our future Olympians train.

**New London Architecture** offer guided tours of these amazing structures.



## Unexpected London

If you are thinking of holding an event in London there are lots of venues, restaurants and hotels to choose from.



For example, **Banking Hall**, a former Lloyd's Bank, is a Grade II listed building which combines heritage with the latest technology in events. Close by, **Cheval Three Quays** offers award winning serviced apartments, or if you prefer a hotel, then the **Doubletree by Hilton London Tower Bridge** is available with a fantastic Sky Lounge from which to watch the sun go down.

At Blackfriars Bridge, the **Novotel London Blackfriars** is a new generation of Accor hotels that offers some cool bedrooms and meeting space for a smaller meeting. It even has a pool!

Moving even closer to the centre of town, **Carlton House Terrace**, home to the British Academy and a former residence of William Gladstone, sits at the very heart of the capital, overlooking the Mall. It has a selection of traditional rooms for meetings and events; **Le Meridien Piccadilly** or the **W Hotel** would be the closest hotels for overnight accommodation, both top 5-star hotels.

After all the work is done, it's time to relax and have some fun with or without your group, so head to **Shrek's Adventure** or the **London Dungeon** for a few laughs and shrieks, before choosing dinner options of either **Bubba Gump Shrimp Company**, in its first site in the UK, or **Smith & Wollensky** just off the Strand. If you prefer more traditional dining, then **Rules**, London's oldest restaurant is waiting for you.



## Shoppers' delight

London is a shopper's paradise. Here are some ideas of where to go:

Take a trip to one of the capital's two top shopping centres **Westfield London** or **Westfield Stratford City**. Here, you will find all of the best high-street brands and some luxury shops, together with fabulous food areas for refuelling. **KidZania** will also keep the kids happy. For bargains head to the London Designer Outlet at **Wembley** and watch this space for more information on **The O2's** shopping experience coming soon.

London's West End shopping district gives you easy access to the best stores, whatever your tastes. **Oxford Street** is home to flagship retailers such as **John Lewis** and **Selfridges**, whereas **Regent Street** and the **King's Road** have some mid-range to high end stores. Don't forget **Shaftesbury Avenue** and **St Martin's Courtyard**, off the main shopping area for fashion-forward brands, trendy homeware and top places for a bite to eat.

Alternatively, check out **Seven Dials**, and **Carnaby Street**, for boutique brands, independent record stores, and bars and cafés ideal for resting and watching the world go by.

For a trip out of London, visit **Bicester Village** for lots of exclusive offers and a VIP experience in luxury outlets such as **Radley London**, **Jimmy Choo** and **Mulberry**.

---

**The Amba Hotel Marble Arch** is particularly well located on **Oxford Street** making it a natural fit for those multi day shopping trips.

## London's Tech scene

Tech in London is mainly centred around **Shoreditch** and the **Old Street roundabout** in east London.



Here, around 40,000 tech businesses thrive in collaboration spaces such as **Central Working** and **WeWork**, so if you are looking to organise a tech event, then there are some vibrant spaces in this neck of the woods.

**Tobacco Dock** is one of the largest event venues in the area, with a multitude of different spaces on offer, including collaboration space. **The Trampery**, **Rainmaking Loft**, and etc venues – **155 Bishopsgate** are all in the vicinity and as for hotels, the **Ace Hotel London**, **The Tower Hotel** and **Grange Hotels** are available for overnight accommodation needs.



The biggest of our venues is **ExCel London** home to many events, some of which are tech related. It has an abundance of spaces for events, from small to large, making it a popular choice for public shows, trade shows, association and corporate events, and special occasions. The venue is surrounded by hotels, the closest of which are the **Aloft**, the **Novotel London ExCel**, **Ibis London ExCel**, and the **Doubletree by Hilton ExCel**. This makes it the perfect location for an event.

There are also other venues and hotels in central London which are associated with the tech scene. For example on Embankment, **IET London: Savoy Place**

opened its doors last year. It's modern and has built in audio visual elements, not to mention the roof terrace with stunning river views.

**The Rosewood London** and **St Martins Lane** are really modern and offer trendy meeting spaces plus superb accommodation.

Last but not least, the **Tower Room at London & Partners** offices is a funky space for those smaller occasions, with views of Tower Bridge and the Tower of London. The space also has an interactive video wall.

# Partner index

*The Convention Bureau represents a range of partners across every aspect of event planning from accommodation to transport providers. The partner index is a comprehensive list giving you access to some of the city's most trusted providers and a detailed guide to the city's accommodation and venue capacities.*

## Exhibition Centres

Centre	T	CA	CL	B	R	Max Sqm	Meeting Rooms	Closest Tube
ExCeL London	20-20000	20-20000	20-20000	20-20000	20-10000	100000	72	Prince Regent (DLR)
Olympia London	4000	n/a	n/a	3000	10000	1800-40000	6	Kensington Olympia (OV)
Business Design Centre	2500	960	670	900	900	2088	14	Angel
QEII Centre	1200	497	600	930	1200	1375	32	Westminster

## Venues

Venue	T	CA	CL	B	R	Max Sqm	Meeting Rooms	Closest Tube
The O2	20000	n/a	n/a	2200	3000	3402	7	North Greenwich
Alexandra Palace	7000	3500	2000	5000	10250	6426	8	Wood Green
Battersea Evolution	4000	2200	1500	2200	4000	3750	1	Sloane Square
Southbank Centre	2500	100	40	160	250	174	11	Waterloo
Central Hall Westminster	2039	400	70	n/a	1300	734	5	Westminster
Barbican Centre	1943	96	100	280	650	736	15	Moorgate
Wembley Stadium	1800	1100	n/a	1100	3250	3480	25	Wembley Park
indigo at The O2	1625	336	n/a	540	1500	650	1	North Greenwich
Sadler's Wells	1500	150	100	160	350	225	10	Angel
Tobacco Dock	1500	770	350	1200	10000	1178	40	Shadwell (DLR and OV)
Twickenham Stadium	1200	500	150	900	1200	1173	175	Twickenham (NR)
Cadogan Hall	953	100	100	150	300	263	3	Sloane Square

(m - feet conversion 1m = 3.280ft)

T - Theatre CA - Cabaret CL - Classroom B - Banquet R - Reception (NR) - National Rail (OV) - Overground (DLR) - Docklands Light Railway

## Venues

Venue	T	CA	CL	B	R	Max Sqm	Meeting Rooms	Closest Tube
The Brewery	900	500	390	700	1000	778	8	Moorgate
Chelsea Football Club - Stamford Bridge	850	550	550	650	1000	1400	24+	Fulham Broadway
The Camden Centre	800	350	250	350	900	450	2	Kings Cross St Pancras
Guildhall	760	320	210	624	900	630	7	Bank
Grand Connaught Rooms	750	400	315	540	1000	475	39	Holborn
Lee Valley VeloPark	750	n/a	n/a	750	750	2185	1	Stratford
Church House Westminster	664	208	198	372	550	519	19	St James Park
IET London: Savoy Place	626	138	130	300	330	408	21	Embankment
East Wintergarden	600	320	360	500	1000	682	3	Canary Wharf
Mermaid Conference and Events Centre	600	300	195	300	500	1305	8	Blackfriars
Emirates Stadium Events - Arsenal Football Club	600	400	325	500	1200	1372	17	Holloway Road
Senate House	600	200	150	348	350	416	13	Russell Square
etc venues - 155 Bishopsgate	550	350	260	350	900	520	5	Liverpool Street
Hackney Town Hall	420	n/a	n/a	300	550	415	1	Hackney Central
Building Six	400	230	n/a	570	3000	3041	2	North Greenwich
etc venues St Paul's	400	250	190	250	500	288	14	Barbican
Plasterer's Hall	400	200	120	360	550	375	4	St Paul's
etc venues County Hall	400	252	180	252	800	394	18	Waterloo
KidZania	400	350	300	250	1000	75000	6	Shepherds Bush
Kings Place Events	400	100	72	220	440	286	10+	Kings Cross St Pancras
Altitude London	370	200	200	450	600	750	4	Pimlico
116 Pall Mall - Home of the IoD	350	176	180	250	350	914	29	Charing Cross
15 Hatfields	330	230	150	180	550	256	4	Waterloo
Royal College of Physicians	304	96	80	300	350	287	18	Regents Park
London's Living Room	300	100	n/a	100	250	n/a	11	London Bridge
1 Wimpole Street	300	n/a	n/a	100	200	275	15	Bond Street
Baden-Powell House Conference Centre	300	140	75	120	300	241	12	Gloucester Road
Glaziers Hall	300	200	84	220	450	22.27	5	London Bridge
One Whitehall Place (Royal Horseguards)	300	170	180	228	350	214	13	Embankment
BMA House	294	160	120	200	320	406	21	Euston
Banking Hall	280	180	180	280	900	378	3	Bank
The Crystal	270	95	104	190	720	1600	14	Royal Victoria (DLR)
Gilwell Park Conference Centre	250	180	50	180	250	247	8	Chingford (NR)
Brooklyn Bowl	250	105	n/a	150	1000	188	1	North Greenwich
BAFTA 195 Piccadilly	227	144	80	180	260	561	3	Piccadilly Circus
Level 39	220	120	150	150	250	263	4	Canary Wharf

(m - feet conversion 1m = 3.280ft)

T - Theatre CA - Cabaret CL - Classroom B - Banquet R - Reception (NR) - National Rail (OV) - Overground (DLR) - Docklands Light Railway



## Venues

Venue	T	CA	CL	B	R	Max Sqm	Meeting Rooms	Closest Tube
The Hippodrome Casino	200	150	n/a	140	800	n/a	10	Leicester Square
The Pavilion at the Tower of London	200	600	200	600	1000	849	1	Tower Hill
Café de Paris	180	120	150	288	715	324	1	Picadilly Circus
Coin Street Conference Centre	170	112	80	112	250	180	9	Waterloo
Tottenham Hotspurs	160	100	n/a	200	300	n/a	14	White Hart Lane (OV)
Wellcome Collection	154	60	154	60	200	n/a	7	Euston
Tanner & Co.	150	100	40	100	300	256	1	London Bridge
The Roof Gardens	150	100	70	200	500	299	1	High St. Kensington
WWT London Wetland Centre	150	110	n/a	110	200	160	5	Hammersmith
OXO2	150	n/a	n/a	220	400	537	2	Waterloo
Searcy's   The Gherkin	140	70	n/a	140	260	n/a	4	Aldgate
Trinity House	130	130	67	130	180	164	5	Tower Hill
Carlton House Terrace	125	56	35	100	600	102	11	Charing Cross
St Martin-in-the-Fields	120	60	n/a	100	120	126	4	Charing Cross
The Clubhouse St James	120	30	n/a	n/a	175	170	10	Green Park
The Clubhouse Grosvenor Hill	110	48	40	n/a	150	170	7	Bond Street
Southwark Cathedral	80	56	80	200	800	556	7	London Bridge
Victorian Bathhouse	50	40	40	90	150	120.75	1	Liverpool Street
Six Storeys	50	n/a	n/a	50	300	48.9	2	Tottenham Court Rd
The Tower Room at London & Partners	50	35	24	25	80	86	1	London Bridge
Lancaster House	n/a	n/a	n/a	150	700	n/a	5	Green Park
Westfield White City	n/a	n/a	n/a				n/a	White City
Westfield Stratford	n/a	n/a	n/a	Experiential - car launches, large promotional events			n/a	Stratford

(m - feet conversion 1m = 3.280ft)

T - Theatre CA - Cabaret CL - Classroom B - Banquet R - Reception (NR) - National Rail (OV) - Overground (DLR) - Docklands Light Railway

## Attraction Venues

Venue	T	CA	CL	B	R	Max Sqm	Rooms for hire	Closest tube
National Maritime Museum Greenwich	1000	n/a	n/a	500	1000	1092	2	Cutty Sark (DLR)
BFI IMAX	498	250	n/a	250	500	251.7	1	Waterloo
BFI Southbank	450	60	20	80	450	180	1	Waterloo
Royal Opera House	450	n/a	n/a	450	1000	600	11	Covent Garden
Banqueting House	400	240	n/a	380	500	1844	2	Westminster
Science Museum	400	42	n/a	400	1000	on app	12	South Kensington
<b>Westminster Abbey</b>	400 summer season, 50	240 summer season, 80	32	280	1000-summer season, 400	College garden	6	Westminster
National Gallery	328	310	n/a	310	1200	345	18	Charing Cross
British Museum	323	40	45	300	650	496	8	Holborn/Russell Square
Saatchi Gallery	320	150	100	200	300	205	14	Sloane Square
ZSL London Zoo	300	240	N/A	260	300	411	12	Camden Town
Shakespeare's Globe	300	150	n/a	350	450	400	4	Southwark
British Library Conference Centre	255	30	24	70	240	n/a	6	Kings Cross/St Pancras
Royal Air Force Museum	250	120	50	444	800	480	10	Collindale
Hampton Court Palace	250	120	60	270	400	384	12	Hampton Court (NR)
Tate Modern	250	200	n/a	800	1500	n/a	16	Southwark
Museum of London	230	72	30	400	1000	404	15	St Pauls
Royal Botanic Gardens, Kew	230	160	150	230	400	388	7	Kew Gardens
English Heritage - Eltham Palace	210	126	n/a	200	300	18.58	3	Mottingham (NR)
Natural History Museum	209	360	360	650	1200	n/a	5	South Kensington
Imperial War Museum London	200	80	36	270	340	156	8	Lambeth North
Kensington Palace	200	120	70	230	300	221	3	High St. Kensington
Old Royal Naval College Greenwich	200	100	100	398	398	686	7	Cutty Sark (DLR)
Tate Britain	190	60	40	500	900	n/a	8	Pimlico
London Canal Museum	160	80	40	120	200	N/A	3	Kings Cross St. Pancras
HM Tower of London	150	100	80	240	300	384	12	Tower Hill
Houses of Parliament	150	n/a	n/a	170	450 Sat. otherwise 200	932 Sat. otherwise 181	13	Westminster
V&A Museum of Childhood	150	50	30	300	900	800	5	Bethnal Green
Riverside Rooms	150	120	150	150	150	13.69	4	Waterloo
Museum of London Docklands	146	80	n/a	200	400	n/a	7	Canary Wharf

(m - feet conversion 1m = 3.280ft)

T - Theatre CA - Cabaret CL - Classroom B - Banquet R - Reception (NR) - National Rail (OV) - Overground (DLR) - Docklands Light Railway

## Attraction Venues

Venue	T	CA	CL	B	R	Max Sqm	Rooms for hire	Closest tube
National Portrait Gallery	138	60	60	230	400	n/a	9	Charing Cross
Warner Bros. Studio Tour London The Making of Harry Potter	125	n/a	n/a	520	600	2100	3	Watford North (NR)
London Transport Museum	121	n/a	n/a	180	500	n/a	3	Covent Garden
Churchill War Rooms	120	80	54	120	200	131	5	Westminster
The View from the Shard	120	n/a	n/a	50	300	873	2	London Bridge
HMS Belfast	110	70	n/a	144	250	228	6	London Bridge
Queen's House Greenwich	100	25	50	120	150	141	1	Cutty Sark (DLR)
ArcelorMittal Orbit	100	50	n/a	120	250	490	3	Stratford
National Theatre	100	48	n/a	80	150	100	5	Waterloo
Somerset House	100	36	n/a	550	1500	500	10+	Temple
Royal Academy of Arts	80	50	n/a	250	800	n/a	n/a	Piccadilly Circus
English Heritage - Kenwood House	80	n/a	n/a	80	100	n/a	1	Archway
Tower Bridge Exhibition	70	n/a	n/a	120	250	366	4	Tower Hill
English Heritage - Rangers House	60	30	n/a	60	80	n/a	1	Blackheath (NR)
The Geffrye Museum	50	n/a	48	70	250	n/a	3	Hoxton (OV)
Kew Palace and Royal Kitchens	40	n/a	n/a	30	40	52	2	Kew Bridge
The Household Cavalry Museum	40	20	n/a	40	100	170	2	Charing Cross
English Heritage- Wellington Arch	40	22	n/a	36	60	n/a	1	Hyde Park Corner
Coca Cola London Eye	n/a	n/a	n/a	8	25	30	32	Waterloo
Cutty Sark Greenwich	n/a	n/a	n/a	270	450	n/a	1	Cutty Sark
Madame Tussauds London	n/a	n/a	n/a	380	1000	n/a	5	Baker Street
Royal Observatory Greenwich	n/a	n/a	n/a	110	150	112	2	Cutty Sark
SEA LIFE London Aquarium	n/a	n/a	n/a	200	500	n/a	2	Waterloo
The London Dungeon	n/a	n/a	n/a	150	150	n/a	2	Waterloo
The Wallace Collection	n/a	n/a	n/a	160	300	1034	6	Bond Street
Peter Harrison Planetarium	n/a	n/a	n/a	110	150	n/a	2	Cutty Sark
Victoria and Albert Museum	n/a	300	n/a	400	600	629	10	South Kensington
Shrek Adventure! London	n/a	n/a	n/a	150	150	n/a	1	Waterloo
The Golden Hinde	n/a	n/a	n/a	100	100	n/a	3	London Bridge
National Army Museum	refurbishment, opening 2017							Sloane Square
Design Museum	refurbishment, opening late 2016							High St. Kensington

(m - feet conversion 1m = 3.280ft)

T - Theatre CA - Cabaret CL - Classroom B - Banquet R - Reception (NR) - National Rail (OV) - Overground (DLR) - Docklands Light Railway

## Academic Venues

Venue	T	CA	CL	B	R	Max Sqm	Rooms for hire	Closest tube
London School of Economics and Political Science (LSE)	999	n/a	120	n/a	80	n/a	Various	Holborn
Queen Mary University of London	774	200	250	200	1000	n/a	37	Mile End
Imperial College London	740	168	90	350	600	572	Various	South Kensington
King's Venues Guys Campus London Bridge	450	60	80	80	120	n/a	36	London Bridge
King's Venues Waterloo Campus	397	36	110	400	400	n/a	48	Waterloo
King's Venues Strand Campus	320	120	140	150	250	574	50	Temple
King's Venue Denmark Hill	290	n/a	n/a	n/a	n/a	100	n/a	Denmark Hill (NR)
London Southbank University	220	48	30	n/a	90	n/a	Various	Southwark
Loughborough University	175	60	175	175	175	n/a	Various	Stratford

## Riverboats

Boats	Seated	Reception	Seated Dinner	Location
Thames River Services and Circular Cruises Westminster	524	500	250	Optional
Bateaux London Thames Dining Cruise Experiences	260	320	60	Embankment
MBNA Thames Clippers	220	220	220	Optional
City Cruises	200	595	200	Optional
RS Hispaniola	120	180	120	Victoria Embankment
Thames RIB Experience	12	n/a	n/a	Optional

## Hotels With Meeting Spaces

Hotel	T	CA	CL	B	R	Max Sqm	Meeting Rooms	Bed Rooms	Closest Tube
Intercontinental London – The O2	3000	1680	1800	2400	3000	3012.86	20	453	North Greenwich
Hilton London Metropole	1700	624	650	1080	1600	1062	42	1059	Edgware Road
Park Plaza Westminster Bridge	1400	720	700	1350	1500	1167	31	1019	Lambeth North
Grosvenor House, A JW Marriott Hotel	1300	1000	700	2000	2000	1779	31	420	Marble Arch
Lancaster London	1200	640	552	1200	1680	1263	15	411	Lancaster Gate
London Hilton on Park Lane	1000	600	550	900	1250	937	13	453	Hyde Park Corner

(m - feet conversion 1m = 3.280ft)

T - Theatre CA - Cabaret CL - Classroom B - Banquet R - Reception (NR) - National Rail (OV) - Overground (DLR) - Docklands Light Railway



## Hotels With Meeting Spaces

Hotel	T	CA	CL	B	R	Max Sqm	Meeting Rooms	Bed Rooms	Closest Tube
Novotel London West	1000	n/a	540	1200	n/a	1726	33	630	Hammersmith
London Marriott Hotel Grosvenor Square	900	432	500	648	1000	763	14	217	Bond Street
Hilton London Wembley	700	500	450	600	800	693	14	361	Wembley Park
Intercontinental London Park Lane	700	259	252	750	1000	841	13	454	Hyde Park Corner
Park Plaza Riverbank London	650	432	450	540	660	639	23	489	Vauxhall
Hilton London Bankside	600	n/a	350	600	700	891	11	292	Southwark
Radisson Blu Portman	600	200	180	550	600	632	6	272	Marble Arch
The Landmark London	568	264	364	432	750	610	13	300	Marylebone
Park Plaza Victoria London	550	280	260	400	750	607	15	299	Victoria
Royal Garden Hotel	550	280	320	430	800	939	10	394	High Street Kensington
The Tower	550	250	320	500	570	551	19	801	Tower Hill
Chelsea Harbour Hotel	500	300	250	500	800	564	11	158	Imperial Wharf (NR and DLR)
Millennium Gloucester Hotel & Conference Centre	500	288	300	480	650	420	12	610	Gloucester Road
Millennium Hotel London Mayfair	500	280	250	460	700	484	10	336	Bond Street
Sheraton Grand London Park Lane	500	240	300	420	1200	990	5	302	Green Park
Clayton Crown	460	200	200	300	380	390.6	4	152	Cricklewood (NR)
Pullman London St Pancras	446	200	220	240	450	552	17	312	Kings Cross St. Pancras
Rosewood London	430	200	285	340	555	397	12	306	Holborn
Amba Hotel Marble Arch	400	200	200	300	500	313	13	692	Marble Arch
Hilton London Syon Park	400	n/a	300	400	700	465	15	137	Syon Lane
Hilton London Tower Bridge	400	n/a	220	300	450	334	10	246	London Bridge
Jumeirah Carlton Tower	400	240	250	400	700	445	11	216	Knightsbridge
The Dorchester	400	240	300	510	1000	957	10	250	Hyde Park Corner
Hilton London Canary Wharf	380	n/a	220	270	400	337	8	282	Canary Wharf
The Langham London	375	136	154	250	375	364	16	380	Oxford Circus
Hilton London Paddington	350	n/a	160	280	300	282	18	419	Paddington
The Cumberland	350	180	190	240	400	414	27	1019	Marble Arch
Clayton Hotel Chiswick	330	200	200	330	330	429	10	227	Gunnersbury
St Pancras Renaissance London Hotel	325	240	220	280	575	453	10	245	Kings Cross St. Pancras
Copthorne Tara Hotel London Kensington	320	120	120	332	500	410	7	833	High St. Kensington
The Bloomsbury Hotel	320	160	160	180	250	266	13	153	Tottenham Court Rd

(m - feet conversion 1m = 3.280ft)

T - Theatre CA - Cabaret CL - Classroom B - Banquet R - Reception (NR) - National Rail (OV) - Overground (DLR) - Docklands Light Railway

## Hotels With Meeting Spaces

Hotel	T	CA	CL	B	R	Max Sqm	Meeting Rooms	Bed Rooms	Closest Tube
Radisson Blu Edwardian, Bloomsbury Street	300	120	120	240	300	232	9	174	Tottenham Court Rd
The Lensbury Hotel	300	185	50	220	260	300	30	171	Teddington (NR)
The Royal Horseguards	300	170	180	228	350	214	13	281	Embankment
The Waldorf Hilton	300	150	150	350	700	491	9	298	Covent Garden
London Marriott West India Quay Hotel	290	102	132	160	300	230	16	302	Canary Wharf
Claridge's	280	120	150	250	450	338	7	203	Bond Street
The May Fair Hotel	280	120	140	220	370	336	17	437	Green Park
Andaz Liverpool Street	250	120	120	220	300	299	15	267	Liverpool Street
Corinthia Hotel London	250	120	120	180	400	218	8	294	Embankment
Hilton London Olympia	250	n/a	150	300	350	491	10	405	Olympia London (OV)
Hyatt Regency London The Churchill	250	144	180	240	350	242	10	453	Marble Arch
Mandarin Oriental Hyde Park	250	125	120	250	400	244	5	194	Knightsbridge
ME London	250	170	153	253	300	500	7	157	Temple
Radisson Blu Edwardian, New Providence Wharf	250	128	120	180	200	210	8	169	Canary Wharf
The Berkeley	250	100	100	200	450	252	6	210	Hyde Park Corner
DoubleTree by Hilton Hotel London- Ealing	230	n/a	n/a	230	230	n/a	7	189	Ealing Common
Le Meridien Piccadilly	230	104	120	200	245	168	7	280	Piccadilly Circus
DoubleTree by Hilton Hotel London- Tower of London	220	120	84	150	250	198	23	583	Tower Hill
DoubleTree by Hilton Hotel London- WestEnd	220	80	82	110	200	285	17	215	Holborn
ibis STYLES London Excel	218	118	118	136	150	203	4	305	Custom house (DLR)
Hilton London Kensington	200	n/a	120	300	400	528	14	601	Shepherd's Bush
Kingsway Hall	200	126	130	180	250	30	11	170	Holborn
Park Plaza Waterloo	190	100	110	160	200	715	6	494	Waterloo
DoubleTree by Hilton Hotel London- Westminster	180	96	70	130	200	198	11	460	Westminster
Melia White House	180	77	100	100	200	149	9	693	Regents Park
Amba Hotel Charing Cross	170	100	130	150	200	174	9	239	Charing Cross
DoubleTree by Hilton Hotel London- Victoria	160	100	100	120	200	216	8	225	Victoria
Hotel Café Royal London	160	63	60	120	230	176	6	160	Piccadilly Circus
London Marriott Hotel Marble Arch	150	72	100	120	200	171	7	240	Marble Arch

(m - feet conversion 1m = 3.280ft)

T - Theatre CA - Cabaret CL - Classroom B - Banquet R - Reception (NR) - National Rail (OV) - Overground (DLR) - Docklands Light Railway

## Hotels With Meeting Spaces

Hotel	T	CA	CL	B	R	Max Sqm	Meeting Rooms	Bed Rooms	Closest Tube
Millennium Hotel London Knightsbridge	130	70	85	100	160	131	4	222	Knightsbridge
Thistle City Barbican	130	100	70	144	200	172	13	463	Old Street
Conrad London St James	120	n/a	60	220	300	270	7	256	St James Park
St Martins Lane	120	64	50	170	400	130	8	204	Leicester Square
The Connaught	120	60	70	120	200	151	7	121	Bond Street
The Grosvenor	120	72	70	100	150	8.21	9	345	Victoria
Hilton London Euston	110	n/a	70	90	120	227.7	11	159	Euston
Hilton London Green Park	110	n/a	60	n/a	110	117.2	4	163	Green Park
Radisson Blu Edwardian, Grafton	110	64	50	100	150	102.7	11	330	Warren Street
Radisson Blu Edwardian, Kenilworth	110	64	45	90	120	137.3	06-Jan	186	Tottenham Court Rd
Sunborn London	110	70	70	200	250	170	6	131	Custom House (DLR)
DoubleTree by Hilton Hotel London- Marble Arch	100	56	54	40	180	100.33	8	121	Marble Arch
Novotel London Blackfriars	100	36	54	50	100	84	7	182	Blackfriars
Novotel London City South	100	n/a	46	72	100	n/a	6	182	London Bridge
Park Plaza County Hall London	100	64	60	80	100	86	6	399	Waterloo
Radisson Blu Edwardian, Hampshire	100	50	48	66	120	108	6	127	Leicester Square
Radisson Blu Edwardian, Vanderbilt	100	54	54	90	120	96.6	12	215	Gloucester Road
Thistle Euston	100	54	45	60	80	80	6	362	Euston
Warren House	100	80	56	100	100	11.66	9	46	Norbiton (NR)
Novotel London Greenwich	92	60	50	40	120	110	6	151	Cutty Sark (DLR)
DoubleTree by Hilton Hotel London- Islington	90	n/a	40	60	n/a	106	4	372	Angel
Novotel London Tower Bridge	90	n/a	36	64	n/a	90	8	203	Tower Hill
Apex London Wall Hotel	80	30	36	60	100	63.3	3	209	Tower Hill
The Athenaeum	80	35	25	60	80	8.09	3	168	Green Park
Cliveden	80	24	n/a	60	80	n/a	6	45	Taplow (NR)
H10 London Waterloo	80	35	40	120	240	269	4	177	Waterloo
London Bridge Hotel	80	42	36	80	120	103	5	138	Borough High St.
London Marriott Hotel County Hall	80	40	40	60	90	262	12	200	Westminster
Novotel London Excel	80	n/a	56	70	n/a	70	13	257	Custom House (DLR)
The Metropolitan	80	35	40	60	180	112	7	144	Hyde Park Corner
The Park Tower Knightsbridge	80	30	50	120	150	167	5	280	Knightsbridge
Thistle Holborn, The Kingsley	80	40	40	60	100	87	7	129	Holborn
Park Plaza Sherlock Holmes Hotel	70	32	30	44	60	46	7	119	Baker Street

(m - feet conversion 1m = 3.280ft)

T - Theatre CA - Cabaret CL - Classroom B - Banquet R - Reception (NR) - National Rail (OV) - Overground (DLR) - Docklands Light Railway

## Hotels With Meeting Spaces

Hotel	T	CA	CL	B	R	Max Sqm	Meeting Rooms	Bed Rooms	Closest Tube
Mercurie London Bridge	60	50	40	80	120	132	7	144	London Bridge
The Marylebone Hotel	60	36	50	48	80	96	6	257	Baker Street
W London- Leicester Square	56	35	n/a	50	80	84.2	3	192	Leicester Square
Millennium at Chelsea FC	50	32	24	150	200	202	7	281	Fulham Broadway
One Aldwych	50	28	n/a	50	80	86	4	105	Covent Garden
Radisson Blu Edwardian, Mercer Street	50	25	24	40	40	52	6	137	Covent Garden
Sanderson	50	32	36	80	300	208	2	150	Goodge Street
The Goring	50	20	n/a	44	100	85	4	69	Victoria
The Halkin	50	20	n/a	46	90	93	2	41	Hyde Park Corner
The Stafford London	50	18	16	44	70	61	5	105	Green Park
Thistle Kensington Gardens	45	24	30	40	150	52	3	175	Queensway
Novotel London Waterloo	40	n/a	24	24	n/a	50	6	187	Waterloo
The Trafalgar	40	22	n/a	n/a	50	4.57	3	129	Charing Cross
Hampton by Hilton Waterloo	40	10	20	110	150	17.65	4	297	Waterloo
K+K Hotel George	37	25	23	80	150	90	4	154	Earls Court
Aloft London Excel	30	12	n/a	n/a	40	47	6	252	Prince Regent (DLR)
citizenM Hotel Bankside	30	n/a	n/a	n/a	n/a	40	3	192	Southwark
Hilton London Hyde Park	30	n/a	14	n/a	n/a	4.5	1	136	Queensway
Saint Georges Hotel	30	n/a	n/a	100	170	40	2	95	Oxford Circus
Thistle Bloomsbury Park	30	10	20	30	70	10.13	1	95	Russell Square
Thistle Hyde Park	30	16	20	25	40	3.52	3	54	Lancaster Gate
The Arch London	25	n/a	n/a	40	50	65	3	82	Marble Arch
Hilton London Angel Islington	n/a	n/a	n/a	82	140	n/a	1	188	Angel
No. 11 Cadogan Gardens	n/a	n/a	n/a	60	60	n/a	7	56	Sloane Square
Radisson Blu Edwardian, Berkshire	n/a	n/a	n/a	n/a	n/a	n/a	n	149	Bond Street
Radisson Blu Edwardian, Sussex	n/a	n/a	n/a	12	n/a	15	2	101	Marble Arch
The Hari	n/a	n/a	n/a	24	180	200	2	85	Knightsbridge
Thistle Trafalgar Square	n/a	n/a	n/a	n/a	n/a	n/a	n/a	108	Charing Cross
Radisson Blu Edwardian, Leicester Square	Under refurbishment								Leicester Square
Belmond, Cadogan Hotel	Opening in 2017								Sloane Square

(m - feet conversion 1m = 3.280ft)

T - Theatre CA - Cabaret CL - Classroom B - Banquet R - Reception (NR) - National Rail (OV) - Overground (DLR) - Docklands Light Railway



### Accommodation Only

Property	Total bedrooms, suites or apartments	Closest Tube
Imperial College London (Summer Only)	2000	Across West London
University of Arts London (Summer Only)	1000	Holborn
Generator Hostel London	870	Russell Square
LSE Bankside House (Summer Only)	617	Southwark
LSE High Holborn Residence (Summer Only)	447	Holborn
DoubleTree by Hilton Hotel London- Docklands Riverside	378	Canada Water
LSE Northumberland House (Summer Only)	340	Charing Cross
Smart Space - Russell Square	340	Russell Square
LSE Rosebery Hall (Summer Only)	339	Angel
Smart Space - Hyde Park Inn	320	Queensway
Palmers Lodge	270	Willesden Green
DoubleTree by Hilton Hotel London- Excel	260	Prince Regent
Smart Space - Hyde Park View	260	Marble Arch
DoubleTree by Hilton Hotel London- Hyde Park	228	Queensway
LSE Grosvenor House (Summer Only)	227	Covent Garden
LSE Passfield Hall (Summer Only)	226	Euston Square
The Bailey's London	210	Gloucester Road
DoubleTree by Hilton Hotel London- Kensington	203	South Kensington
DoubleTree by Hilton Hotel London- Chelsea	172	Parsons Green
LSE Carr-Saunders Hall (Summer Only)	160	Goodge Street
Cheval Three Quays	159	Tower Hill
DoubleTree by Hilton Hotel London- Kingston upon Thames	146	Richmond
Hampton by Hilton Croydon	120	East Croydon (NR)
Smart Space - Camden Inn	120	Camden Town
Cheval Gloucester Park	100	Gloucester Road
The Westbridge Hotel	80	Stratford
Cheval Thorney Court	58	High Street Kensington
Cheval Knightsbridge	46	Knightsbridge
Kent Hall Hotel	39	Manor House
The Beaver Hotel	38	Earls Court
Crystal Hostels- Duke of Leinster	36	Bayswater
Cheval Phoenix House	33	Sloane Square
St David & Norfolk Court	26	Paddington
Apartments - Chelsea	8	Sloane Square
Apartments - Marylebone	5	Baker Street
The Westbridge Hotel	80	Stratford
Cheval Thorney Court	58	High Street Kensington
Cheval Knightsbridge	46	Knightsbridge
The Sheriff Hotel	45	Victoria

### Accommodation Only

Property	Total bedrooms, suites or apartments	Closest Tube
Kent Hall Hotel	39	Manor House
The Beaver Hotel	38	Earls Court
Crystal Hostels- Duke of Leinster	36	Bayswater
Cheval Phoenix House	33	Sloane Square
St David & Norfolk Court	26	Paddington
Apartments - Chelsea	8	Sloane Square
Carlton Court Apartments	6	Green Park
Apartments - Marylebone	5	Baker Street

## Homestay

Property	Total Bedrooms, Suites or Apartments	Closest Tube
Airbnb	Various	Various
Coach House London Vacation Rentals	38 properties with over 86 bedrooms	Various
Happy Homes	Various	Various
Homestay.com	Various	Various

## Airport Hotels

Hotel	T	CA	CL	B	R	Max Sqm	Meeting Rooms	Bed Rooms	Closest Tube
Sofitel London Heathrow	1300	650	750	900	1500	1309	45	605	Heathrow Terminal 5
Hilton London Heathrow Airport Terminal 5	1200	480	430	816	1200	840	14	350	Heathrow Terminal 5
Radisson Blu Edwardian, Heathrow	700	400	350	550	700	502	32	459	Heathrow Terminal 123
Hilton London Gatwick	500	150	250	360	50	385.53	21	821	Gatwick Airport National Rail
Hilton London Heathrow Airport Terminal 4	250	115	150	170	300	201.78	30	398	Heathrow Terminal 4
DoubleTree by Hilton Hotel London- Heathrow Airport	70	50	30	50	70	n/a	6	200	Heathrow Terminal 123
Hilton Garden Inn London Heathrow Airport	60	32	25	40	60	67.72	7	364	Hatton Cross

(m - feet conversion 1m = 3.280ft)

T - Theatre CA - Cabaret CL - Classroom B - Banquet R - Reception (NR) - National Rail (OV) - Overground (DLR) - Docklands Light Railway

## Professional Conference Organisers (PCO's)

Professional Conference Organisers (PCOs) collaborate with National and International Associations to help them deliver their conferences successfully. They provide end to end planning and logistics especially financial management and delegate and sponsorship acquisition.

Company
Kenes UK
MCI Group UK Ltd.
Meeting Makers
TFI Group
Zibrant

## Destination Management Companies (DMC's)

Specialise in the delivery of events, tours, staffing and transport, utilising extensive local knowledge, expertise and resources.

Company	Description
2B-UK	North America and Australia Market specialist
AC Tours	Destination management for UK, Ireland, Paris & Amsterdam
AC Travel Group	Scandinavian/Nordic market specialists
All In One Tours Ltd	Specialise in german groups
Ampersand Travel	Asia speciality
Artisan Pro	Event and destination management UK and internationally
Atlas Travel Solutions	All markets
Ben Thompson Events Ltd	Sporting corporate hospitality
Blue Ribbon Events Ltd	Smaller groups - very creative
Brook Green UK DMC	Belgian and Dutch speciality
Business Services International UK Ltd	Russian Speaking
China Britain Travel Group	Chinese specialist inbound groups
E-Voyages	Specialise in French groups
Kuoni Travel Ltd - Destination Management	Offices in other parts of the world so can help with anything
Liberty International GB Ltd	Italian speciality, but also have offices in Europe, Brazil and Middle East
Principal. London DMC	Corporate EU, North American and Asian market
Spectra	90% North American business
Sterling Travel Ltd	European and North American business
Tumlare	European business
Wedgewood Britain	Offices all over the world, Europe, Africa, Brazil
Zibrant	All markets



## Event Management Companies (EMC's)

Specialise in the creation and delivery of all aspects of your event, including strategic marketing, budgeting, logistics, and branding.

Company	Description
George P Johnson Company	World's largest event marketing agency
GroupSe7en Events	Delivering global meetings and event planning services
innovision events	Live event delivery
JL Event Management	EMC providing staffing solutions for events
Smyle	Brand focused live events
Worldspan	Global event management and creative communications

## Service Providers

Our service provider partners offer a range of additional services for events.

Company	Description
Aggreko	Generator and chiller hire
AKA promotions Ltd	Global entertainment marketing & advertising agency for the live entertainment, arts and culture
Association of Professional Tourist Guides	Tourist guides
BRAL	Tax refund for events
Conference Interpreters UK (Members of AIIC)	Translation Services
Disabled Access Holiday	Travel agent and travel services for disabled people in the UK
DisabledGo	Access information for disabled people in the UK
Encore Tickets Ltd	Event ticket seller
Excess Baggage	Baggage shipping and storage services
Guild of Registered Tourist Guides	Blue Badge guides
Hiscox Event Insurance	Insurance Providers
Made Travel	Tourism Marketing, Representation and PR Company
Maxima Training Development Ltd	Training
Moore People Event Staffing	Hosting and Support Staff
Open Exhibitions	Exhibition stand design and build contractor
Q-Park	City parking throughout the UK
Showslice	Sharing event infrastructure
SMG Insight	Sport and sponsorship research
Sternberg Clarke	Entertainment Provider
The Leisure Pass Group	Sightseeing and tourism technology specialist, which develops and manages The London Pass
Travel Maps London	Maps for London

## Caterers

Company
Berkeley Catering
Create Food and Party Design
Lime Venue Portfolio
Moving Venue
Peyton Events
Seasoned Events

## Group Activities

Activity	Description	Max Group Size	Location
City Academy	Team Building, Event animation, Learning and Development	n/a	Various
Cookery School	Guided group cooking	50	Oxford Circus
Go Ape Battersea	Interactive Forest Adventure Park	300	Battersea Park
Go Ape Trent Park	Interactive Forest Adventure Park	80	Uxbridge
KidZania London	Real life role- play activities	1,000	White City
Lee Valley White Water Centre	White water rafting, kayaking and canoeing	54	Waltham Cross
Royal Shakespeare Company	Theatre	n/a	Multi locations
small car BIG CITY	Classic Mini Cooper Hire in London for events	24	Trafalgar Square
Thames Jets	Speed boats on the river	12	Optional
Thames RIB Experience	Speed boats on the river	12	Waterloo/Tower Hill
Thames Rockets	Speed boats on the river	12	Optional
Up at The O2	Climb the O2	16	North Greenwich
Wildgoose Events	Employee engagement and team events worldwide	n/a	Various

## Transport

Company	Description
Diamond Air International	Luxury Travel and Transfers
Eurostar International Ltd	High speed passenger train from London to Paris and Brussels
Gatwick Airport	Airport
MyDriver	Chauffeur driven cars and limousines
Peter Carol Prestige Coaching	Luxury coaches for business travel
Serco Caledonian Sleepers	Overnight to Scotland train travel
Southeastern Railway	Passenger trains in the South East
Stansted Express	London to Airport Express Train
Virgin Trains East Coast	Fast passenger trains
Global Transport Services	Chauffeur company providing airport transfers

## Tours

Company	Max group size	Other Info/Services
Arsenal FC - Emirates Stadium Tours	Various	Private group tours available
Bank of England Museum	Various	Presentation for pre-booked groups
Beefeater Distillery	15 pax per tour, tours every 15 minutes	
Big Bus Tours	100	
Brit Movie Tours	250	
British Tours	more than 6pax in minibus	Private London Tours
Buckingham Palace	Various tour options available	reduced admission for groups of 15+
Discovery Tours & Events Ltd	Jack the Ripper Ghost Walks	
Eating London Tours	12 per group	
Fat Tire Tours	15 per guide, 150 overall group size maximum	
Golden Tours	coach and leisure/entertainment tours	
It's Your London	Bespoke	
London Duck Tours	30 per 'duck', 8 ducks	Private hire services, but only include the river section during daylight hours
London Stadium Tours	Various Options Available	Tours of famous London stadiums
London Walks	35 pax per guide	
National Theatre Tours	20 per group	
Sandeman's New London Ltd	40 per guide	
See World	various	Chinese tour guide association
Society of London Theatre (SOLT)	30 per group	theatreland walking tours
The London Helicopter	5 pax per helicopter	
The Original London Sightseeing Tour	96 pax per bus	

## Tours

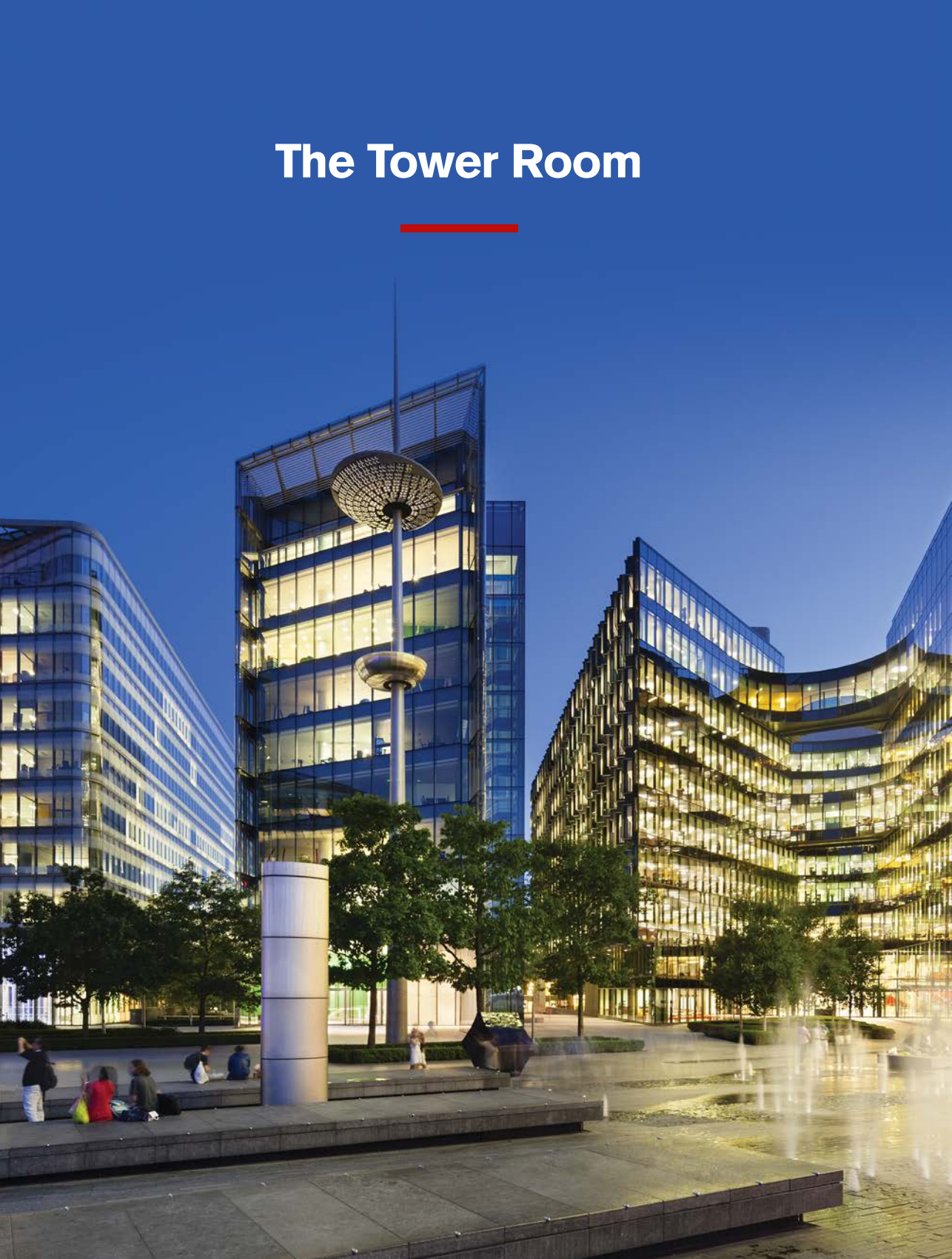
Company	Max group size	Other Info/Services
Wembley Stadium Tour	various	15% discount for groups of 25+
Wimbledon Lawn Tennis Museum	45 per guide	
Windsor Castle	15 per group	

## Restaurants

Venue	Exclusive hire dinner	Reception	Private dining	Closest Tube
Skylon	500	300	60	Waterloo
Planet Hollywood	355	800	n/a	Piccadilly Circus
Rainforest Cafe	335	650	100	Piccadilly Circus
Fire and Stone Covent Garden	250	350	30	Leicester Square
Bubba Gump Shrimp Company	250	250	n/a	Piccadilly Circus
Smith & Wollensky	247	360	50	Charing Cross
Boisdale Canary Wharf	230	500	40	Canary Wharf
Hard Rock Cafe	230	470	120	Hyde Park Corner
Fortnum and Mason	220	300	60	Green Park
Cafe in the Crypt	200	350	n/a	Charing Cross
Garfunkel's	200	350	200	Various
Boisdale Belgravia	140	200	22	Victoria
Cinnamon Kitchen & Anise	140	250	16	Liverpool Street
Cinnamon Club	130	300	60	St James Park
The Orange	120	60	60	Pimlico
Percy & Founders	100	60	40	Goodge Street
Spaghetti House Group of Restaurants	100	n/a	90	Various
Boisdale Bishopsgate	80	120	n/a	Liverpool Street
Tuttos Brasserie Ltd	65	65	50	Covent Garden
Masala Zone Bayswater	50	n/a	36	Royal Oak
Masala Zone Camden Town	50	n/a	30	Camden Town
Masala Zone Covent Garden	50	n/a	55	Covent Garden
Masala Zone Islington	50	n/a	20	Angel
Boisdale Mayfair	45	n/a	22	Marble Arch
Cinnamon Soho	40	150	35	Oxford Circus
Masala Zone Soho	24	n/a	24	Oxford Circus
Dirty Martini Islington	n/a	200	n/a	Oxford Circus
Dirty Martini Monument	n/a	350	n/a	Monument



# The Tower Room



# A room with a view

Located on the 6th Floor at 2 More London Riverside, The Tower Room offers stunning views and the versatility to accommodate a variety of events from conference, theatre and cabaret style meetings to corporate events, receptions, product launches and workshops.

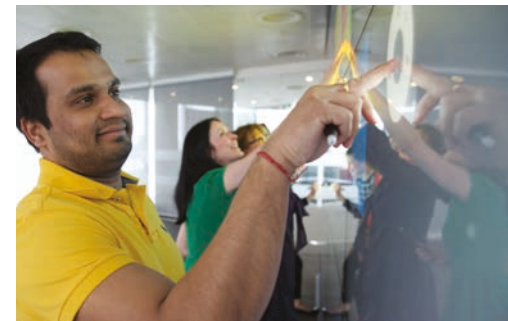
With 180 degree views over the River Thames, the Tower of London and iconic Tower Bridge, the room features natural daylight complete with blackout blinds, and is fully equipped with high tech AV equipment and Wi-Fi.

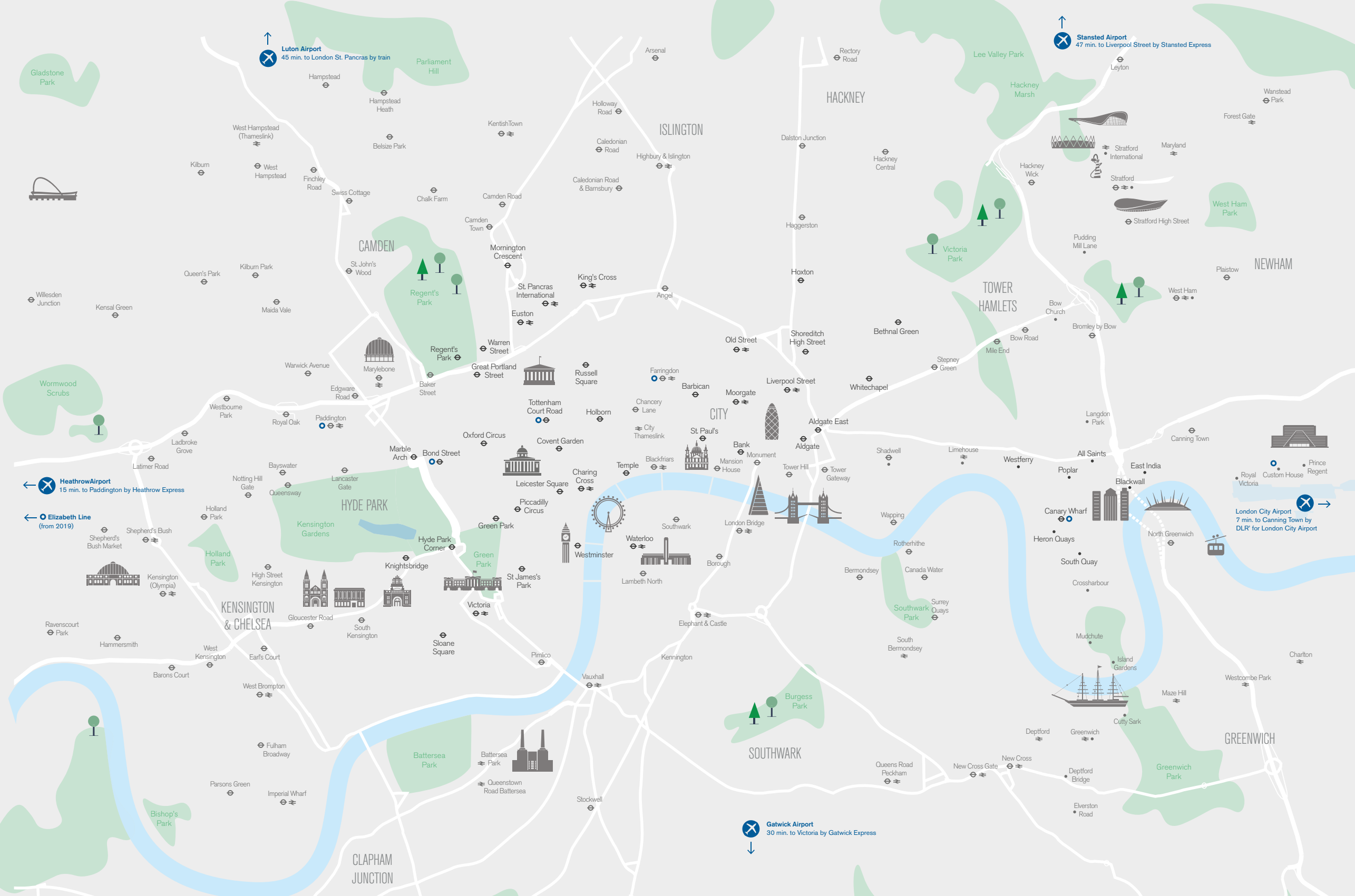
An interactive video wall provides cutting edge technology, whilst creating a collaborative working environment. Whether you're brainstorming strategies with digital post it stickers, or simply displaying your presentation on a giant screen, it will not fail to impress.

A list of preferred caterers offer a range of options from breakfast, working lunches, evening canapé receptions and seated dinners.

Theatre 50	Cabaret 35
Classroom 24	Banquet 25
Reception 80	Boardroom 25
Max. meeting space 86m <sup>2</sup>	

For more information email [conventionbureau@londonandpartners.com](mailto:conventionbureau@londonandpartners.com)  
+44 (0) 20 7234 5833






 **Luton Airport**  
45 min. to London St. Pancras by train

 **Stansted Airport**  
47 min. to Liverpool Street by Stansted Express

 **Heathrow Airport**  
15 min. to Paddington by Heathrow Express

 **Elizabeth Line**  
(from 2019)

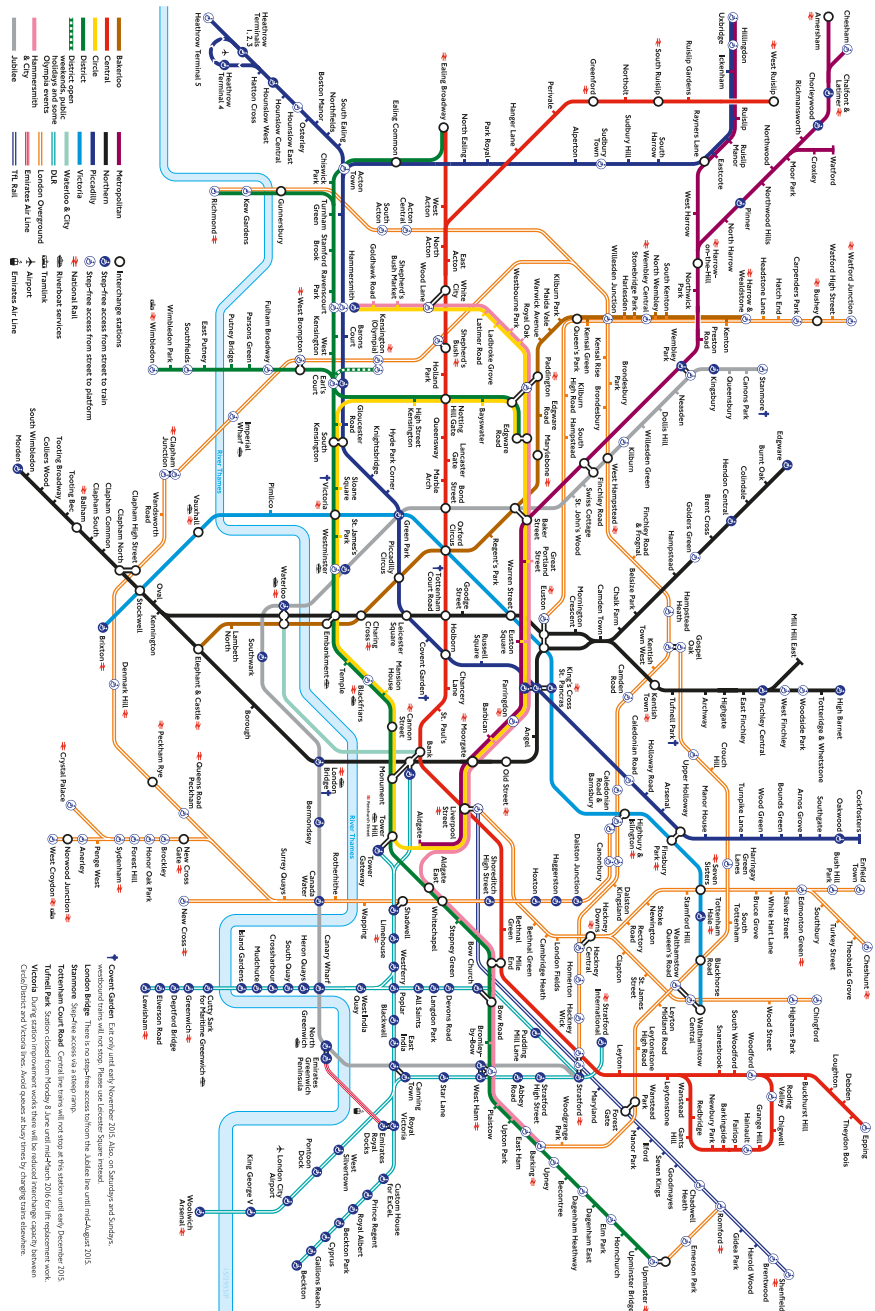
 **Gatwick Airport**  
30 min. to Victoria by Gatwick Express

 **London City Airport**  
7 min. to Canning Town by DLR for London City Airport



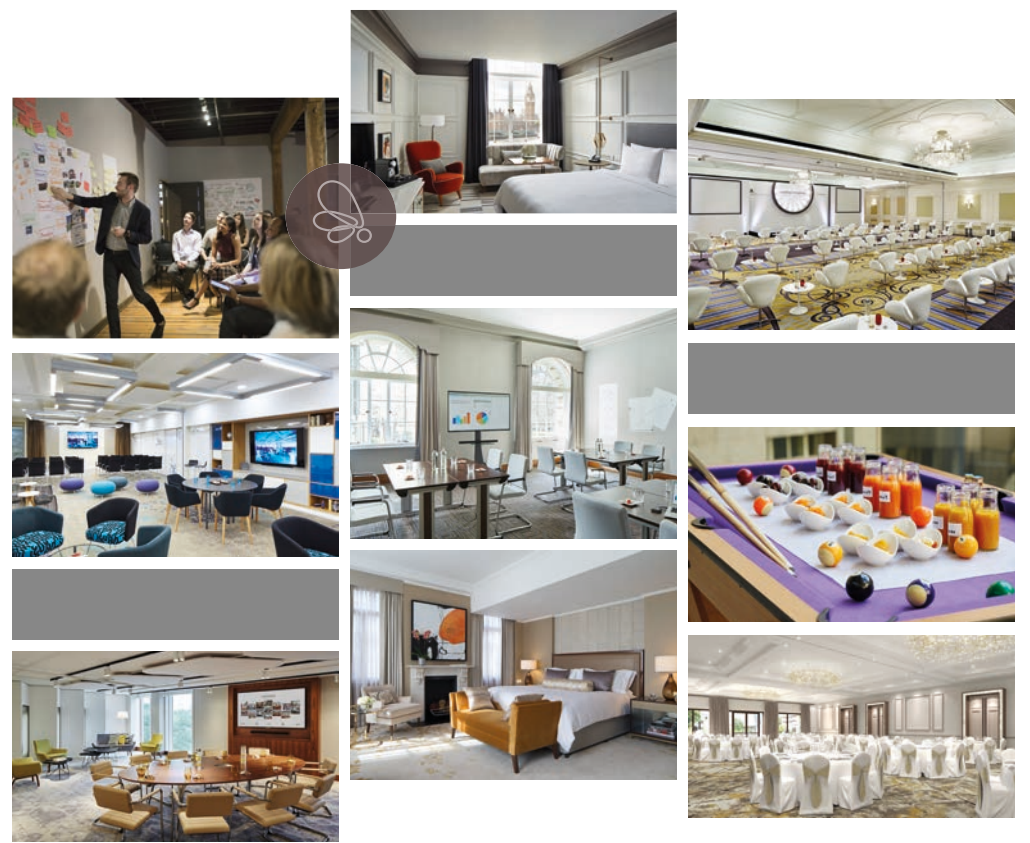
# London Tube map

Night tubes are available Friday and Saturday on some lines and the Elizabeth Line is currently under construction. Visit [tfl.gov.uk](http://tfl.gov.uk) for more information.



© Transport for London  
Reg. user No. 1512933/P  
24 hour travel information: 0343 222 1234  
Sign up for email updates: [tfl.gov.uk/emailupdates](http://tfl.gov.uk/emailupdates)  
@TfTravelAlerts  
Improvement works may affect your journey, please check before you travel  
Version A TfL 05 2015  
TRANSPORT FOR LONDON EVERY JOURNEY MATTERS  
Contact at time of going to print

**EVERY MEETING AND EVENT HAS A PURPOSE**  
THAT PURPOSE IS DRIVEN BY PEOPLE – YOU; MEETING PLANNERS,  
MEETING LEADERS AND ATTENDEES.



Experience it at 16 unique hotels and 3 Marriott brands across Central and Greater London, many of which have undergone extensive multi-million pound hotel renovations to showcase some of the finest meeting and entertainment spaces across The Capital.

[MARRIOTTEVENTS.CO.UK](http://MARRIOTTEVENTS.CO.UK)



**London's best themed venues**  
ideal for dinners, meetings, VIP after hours tours  
and parties for up to 1000 guests

[www.merlineventslondon.com](http://www.merlineventslondon.com) • 0207 487 0224



Drinks Reception at Madame Tussauds



Hospitality on the London Eye



Awards Dinner at Madame Tussauds