

WHAT'S NEW IN LONDON AUTUMN 2017



LONDON
& PARTNERS

CONTENTS

01	Introduction	3
-----------	---------------------	----------

02	New Venues New venue openings in London in 2017 and beyond	4
-----------	--	----------

03	New Hotels New hotel openings in London in 2017 and beyond	14
-----------	--	-----------

04	New Restaurants Selection of restaurant openings in London in 2017	23
-----------	--	-----------

05	Team Building and Incentives Information to make your meeting in London more exciting	30
-----------	---	-----------

06	London News and Tips Advice for planning your event in London	34
-----------	---	-----------

INTRODUCTION

London & Partners is the official convention bureau for London.

As part of the Mayor of London's official promotional company, our team can help you access the widest range of venues, hotels and support services available in this vibrant world city.

We are a not-for-profit public private partnership, funded by the Mayor of London and our partners. This means that our experts can share their entire wealth of knowledge and contacts with you, providing free and impartial advice and assistance.

conventionbureau.london

conventionbureau@londonandpartners.com

NEW VENUES 2017



LONDON®
& PARTNERS

VICTORIA AND ALBERT MUSEUM

Celebrating its 165th anniversary this summer, the V&A is the world's leading museum of art, design and performance.

The V&A Exhibition Road Quarter opened on 30th June 2017, creating a beautiful and unique new civic space for London, and a world-class gallery space for the V&A's internationally acclaimed exhibition programme.



The launch of the V&A Exhibition Road Quarter marks the beginning of a new era for the Museum, as it prepares to expand its presence. The project is the Museum's largest architectural intervention in over 100 years and offers a 21st Century interpretation of the V&A's founding principles - to make works of art and design available to all; to educate; and to inspire designers and manufacturers today and in the future.

The V&A Exhibition Road Quarter took six years to realise and transforms the V&A's former boilerhouse yard on London's great cultural artery, Exhibition Road. This new entrance connects the Museum with its neighbours, reinforcing the Albertopolis vision and creates a sequence of major new spaces:

- **The Sainsbury Gallery:** a flexible, 1,100 square metre column free exhibition gallery that provides the V&A with a purposebuilt space for its world leading programme of temporary exhibitions
- **The Sackler Courtyard:** the world's first porcelain public courtyard, paved in 11,000 handmade tiles that were inspired by the rich tradition of ceramics at the V&A
- **The Blavatnik Hall:** a new entrance into the V&A from Exhibition Road, which transforms how visitors experience and discover the Museum and its collections
- **The Aston Webb Screen:** visitors will now enter the V&A from the street through the 11 openings of newly created colonnade formed from the 1909 Aston Webb Screen.

The V&A Exhibition Road Quarter is the largest construction project undertaken by the V&A since its main buildings in South Kensington were completed in 1909. At the height of construction, up to 60 truckloads of earth were removed from site per day, 99% of which was recycled. The new spaces have created more than 6,000 square metres out of underused space.

PECKHAM LEVELS

Seven levels of a multi-storey carpark are being transformed into one of London's most diverse and exciting new cultural destinations: Peckham Levels.

The new venue, which opens in September 2017, will house more than 90,000 square feet of creative workspace, events and exhibition venues, food and drink destinations, creative facilities and open community spaces for everyone to use and enjoy.

The Ground Level will spill out from the basement into the alleyway outside. It will become a regular market. The alleyway will become a new community gardening and growing space.



HACKNEY ART CENTRE

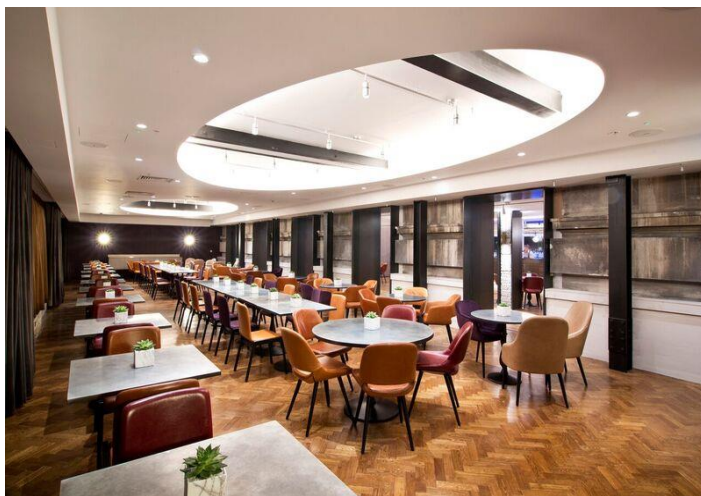
It is incredible that you still make discoveries such as these in London.

The team behind popular East London venue Village Underground has unveiled ambitious plans to reopen the dilapidated Hackney Arts Centre in London as a multipurpose arts space.

The art deco building in Stoke Newington was opened in 1936 but has since laid empty for the last 30 years.

Village Underground wants to reopen the space as a new music venue that would offer space for music, theatre, performance art, lectures, talks and events.

etc. venues COUNTY HALL



County Hall is a game changer.

In an enviable location on the riverside next to The London Eye, etc.venues County Hall has a large multipurpose interconnecting space including two suites for groups of up to 900 with stunning views across The Thames.

The 20 rooms over one floor represent etc.venues most ambitious and stylish offering to date. They have restored and refurbished many of the original design features with ultra-modern twists to create expansive conference suites.

BOROUGH COBBLED COURTYARD

Situated on Southwark Street in the trendy Borough Market area, just a stone's throw from London Bridge Station, is a funky courtyard offering a versatile blank canvas for events.

As a dry hire venue all equipment, furniture and production is hired in, giving you the opportunity to completely tailor your event. Standing reception up to 400 guests.

POSTAL MUSEUM

Opened late spring 2017, The Postal Museum is a venue with a rich history and a firm plan to deliver first-class events.

Up top, the contemporary museum building suits receptions or networking events. But it's down below that will make the biggest impact!

The Mail Rail is a blank canvas space that includes impressive architectural features from its working past. In a series of vaulted brick arches, it was a depot for a secret, six-mile-long mail railway.



Fifteen-minute train trips around the original network and platforms beneath Mount Pleasant is a signature add-on to dinner.

The venue hosts up to 275 guests for a reception, 140 guests for dinner and 150 guests for a meeting.

SEA CONTAINERS

New London event venue, Sea Containers Events, has opened on the iconic South Bank located in the Sea Containers building. A new exciting venue space!.



Situated at the pinnacle of the building, each space offers floor-to-ceiling windows framing some of London's most impressive river and cityscape views.

Made up of over 25,000 square feet, Sea Containers Events provides some of the best spaces for brand profiling and client entertaining. Modernist interior design in today's laid back, collaborative style of meetings and events.

Sea Containers Events offers six spaces capable of hosting numbers up to 150 guests for dinner, 250 guests for cocktail receptions and exclusive hire is available on application for larger events. Spaces include a design-led amphitheatre for up to 200 guests, a private dining room with a balcony overlooking St. Paul's Cathedral and a roof terrace for up to 150 guests.

DESIGN MUSEUM

The stunningly refurbished 1960's building is the only public building designed by John Pawson, and features an incredible hyperbolic paraboloid roof.



Located in Kensington, this stunningly refurbished building is available for conferences, dinners, drinks receptions and meetings.

The Helene and Johannes Huth Gallery features:

- 3,400 square feet of space, with a retractable wall system which allows the room to be divided into two sections
- capacity for dining for 200 guests

The Atrium features 3,380 square feet of space, plus space on the mezzanine and 1st floor landing levels; capacity for dining for 150 guests seated or 270 standing receptions and state-of-the-art technical facilities.

The Bakala auditorium is a 202-seat theatre style space with state-of-the-art AV facilities.

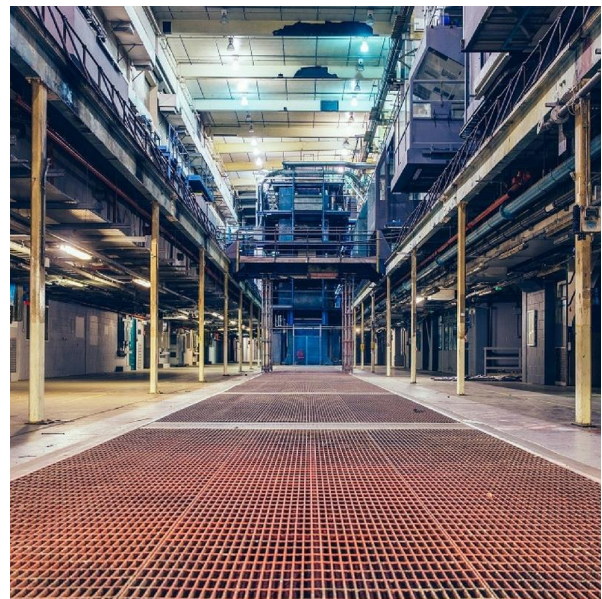
PRINTWORKS

Printworks is a versatile 11,900 square feet event space with a capacity of 6,000 guests.

It comprises of six acres of private, gated land, with six event spaces arranged over multiple levels with a maze of corridors and offices.

There is a further 40,000 square feet of outdoor space offering masses of creative, flexible and inspiring infrastructure.

Printworks is the ultimate blank canvas for conferences, exhibitions, parties, experiential events and product launches.



NATIONAL ARMY MUSEUM

Opened in March 2017, the museum features five new permanent galleries and temporary exhibition space, providing a welcoming and engaging experience, the galleries tell the stories of the British Army, its soldiers and its legacy.

The Museum features five unique and flexible spaces. From the top floor Boardroom, with exceptional views over the Royal Hospital, through to the spectacular new Atrium at the center of the Museum, the transformed venue is available for dinners, drinks receptions, meetings, conferences and award ceremonies.



HERE EAST

Here East is one of London's newest venue with 33,000 square feet of unique meetings and events space in the heart of the Queen Elizabeth Olympic Park.

This unique and exciting venue combines unparalleled infrastructure with a unique environment.

With a private roof terrace and flexible layout, the space can be configured to create breakout spaces for discussion and idea sharing as well as for smaller events and receptions.

The space is ideal for cultural, tech events, entertaining and brand building.



OMEARA LONDON



The Siding, Omeara's blank canvas space, is solely dedicated to private hire, accommodating events of up to 750 capacity.

The space comprises of arches and as all three arches connect, each space has its own private entrance, so Omeara has the capacity to host three separate events at the same time.

The club strives to keep Omeara the cultural hub that it was created to be, so events are generally centered around music, art, fashion and film.

GRACE HALL

Step back in time and into this elegant art deco hall, at the heart of the City. Grace Hall will undergo an extensive overhaul to enhance the venue's art deco heritage with a nod to its past as the headquarters of Grace and Co Bank.

Grace Hall hosts up to 600 guests for reception across the venue's four event spaces.

Grace Hall- High ceilings, classic columns and sweeping marble: this space is Grace Hall's striking centerpiece. The perfect setting for launch parties, dinners and more.

The Directory's observatory- The Director's Observatory sits on the first floor, with an ornate feature window overlooking Grace Hall and Leadenhall Market. Gather here for smaller, more intimate events.

The Archives- Nestled alongside Grace Hall, The Archives offer a stylish, secluded space to host meetings and smaller business events.

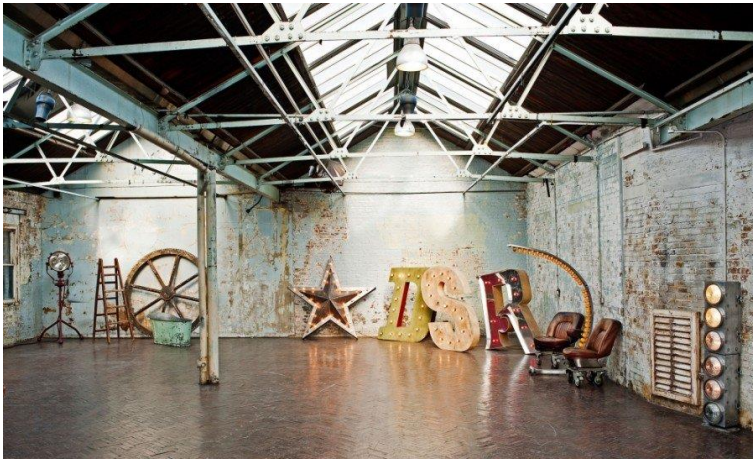
The Grace Bellow- Descend into The Grace Below, the atmospheric basement bar beneath Grace Hall, perfect for private gatherings.

THAMES RIVER SERVICES- MV THOMAS DOGGETT

The biggest passenger boat on the Thames has launched in a major boost for London tourism.

The 524 seat sightseeing boat will operate between Westminster and the Thames barriers. The boat has a multilingual commentary system that allows passengers to use their smartphones to listen to their preferred language.

MC MOTORS



MC Motors is one of London's most intriguing venues with 6,000 square foot of stunning warehouse event space available for a huge variety of events.

Located in East London, MC Motors venue is full of character and charm with a bright roof that fills the space with light, creating a wonderful ambience.

The largest room at MC Motors was originally part of the school next door, whilst the other areas

were small industrial units. After heavy bombing during the war, the whole space was adjoined by the impressive skylight roof, resulting in a wonderful Victorian street running straight through the center.

With its fascinating history and unique design and character, MC Motor's venue hire is perfect for product launches, press events and corporate events with a difference.

ULTRALOUNGE

The Ultralounge in the basement of retail behemoth Selfridges has previously been a Silence room, a Psyche studio and a full-on theatre. It's currently going through another transformation and this latest incarnation is probably our favourite yet.

The 170-capacity venue will host weekly gigs from both established and up-and-coming artists, while the space will also serve as a state-of-the-art audiovisual content studio.



GLAZIERS HALL



The Glaziers Hall is undergoing a sensitive restoration of their Grade II listed building including the installation of front facade featuring 7.5 meter Crittal glass windows. More space being created including two new riverside spaces ideal for receptions, dinners and meetings.

The restoration was sensitive to capture the heritage structure of Hibernia Wharf. Featuring the exposed Sir John Rennie's London Bridge, the newly created spaces showcase three restored Georgian brick arches, original York stone floor and a bespoke wine cellar as a backdrop.

TRINITY BUOY WHARF

Located in the heart of Docklands on the banks of the river Thames, this historical wharf is now a thriving center for the arts and creative industries.

Situated east of Canary Wharf, Trinity Buoy Wharf has all the charm, character and space of a former buoy manufacturing site, in an exclusive London location.

Boasting unrivalled views of the river Thames, O2 Arena and Docklands skyline, this 3 acre site has 24,850 square feet of unique spaces.

Suitable for corporate hospitality, banqueting, launches, conferences, filming, photoshoots and dinner/dances.

Trinity Buoy Wharf Jubilee Pier offers unique river access to central and southern locations, whilst being a scenic and fast way to transport clients or guests.



THE OLD FINSBURY TOWN HALL



The Town Hall is a stunning Grade II listed building, meaning a building of great historical significance.

Set in central London's artistic Clerkenwell district, this versatile and unique event space excudes opulence and glamour. The venue has true character with its Art Nouveau vintage décor and chic ambience that event organisers find magical.

As well as providing an exquisite setting, the venue has another purpose in mind. All profits generated from events held at

the Old Finsbury Town Hall go towards bursaries for the Urdang Art Academy. Now that is really sharing the love!

The Urdang Academy lovingly restored the building in 2007 honouring its rich heritage, now the space can hold banquets and events again, continuing a hundred year tradition.

LOST RIVERS ELEPHANT

Lost Rivers Elephant is a new entertainment space located in the heart of Elephant and Castle. Constructed from recycled shipping containers this versatile, split level venue is a truly unique place. The venue is raw, has a completely industrial vibe and is the place to go and lose yourself whilst experience something unrivalled.

LONDON'S HOTTEST DINNER VENUES ACCORDING TO JOSH...

Joshua Novick is the Business Development Manager for North America at London & Partners and President of the Greater New York Chapter of MPI.

Josh has a fantastic knowledge of London and his experience in sales now helps him cater to clients who plan meetings, events and incentives.

A fun fact about Josh is that he has been to all seven continents!



THE BREWERY



The Brewery truly comes to life at special events. On big nights there's a certain grandeur to stepping across the private courtyard to the octagonal reception and through into the Grade II listed rooms. The arrival through the courtyard is breath taking.

The Brewery can accommodate up to 700 guests for a seated dinner and up to 1,000 guests for a standing reception.

SEARCYS AT THE GHERKIN



The top two floors of this world renowned building is one of the most iconic venues in London to host your upcoming event. The glass dome at the top of The Gherkin is an impressive setting for dinners, providing breathtaking views of the city.

Up to 140 guests can dine and it accommodates up to 260 guests for a reception.

HAMPTON COURT PALACE



For more than 500 years, Hampton Court Palace has played host to gala celebrations, festive banquets and historic meetings. England's most famous kings and queens dazzled audiences with the grandeur and majesty of Hampton Court, which can still be used today to entertain and delight guests.

The Grand Hall, England's last and greatest medieval hall, is where royal residents dined with courtiers and you can too with up to 270 guests.

NEW HOTELS 2017



LONDON[®]
& PARTNERS

FOUR SEASONS TRINITY SQUARE

Built a century ago with its great tower and a grand Portland stone rotunda, the existing structure of Ten Trinity Square has been comprehensively and meticulously restored.

Ten Trinity Square is Grade II listed and located next to the Tower of London World Heritage Site.

The hotel has 100 rooms, restaurants, bars and a spa. It also provides all the luxury resources for impeccable services to each residence.



MANHATTAN LOFT GARDENS DESIGN HOTEL



Planned to open in 2018, a high quality design hotel concept into this progressive new building marks an exciting chapter for the growing creative community that is London's East End.

The Manhattan Loft Corporation is behind the stylish Manhattan Loft Gardens Design Hotel.

The 150 room hotel occupies the seven lower levels of Manhattan Loft Gardens, a mixed used development with three 'sky gardens', ensuring that residents are not far from an outdoor space.

Premium hotel facilities and services will include a gym, spa, restaurants, cafes and bars.

WHITECHAPEL HOTEL

Purpose built to a contemporary aesthetic, The Whitechapel stands on the original grounds of a textile manufacturing company once owned by five brothers. Inspired by the site's industrial past, the hotel has referenced specific iconic elements, which are woven into the fabric of the hotel design.

There are a total of 37 bedrooms available at The Whitechapel, an exclusive Penthouse Suite and a further four boutique-style One Bedroom Apartments that offer the perfect lifestyle experience with a luxury designer touch.

Art'otel LONDON BATTERSEA POWER STATION

This hotel is expected to open in 2019, in one of the new buildings set around the historic Grade II listed Battersea Power Station. The 160 bedroom lifestyle hotel will boast a rooftop pool and bar, a signature restaurant and a gallery.

THE GREAT SCOTLAND YARD



The original Scotland Yard headquarters is being transformed into a luxury hotel.

The Edwardian, Grade II listed site, which was home to Scotland Yard, becomes a £100 million hotel.

The new hotel will have 236 rooms, a grand entrance foyer, winter garden lounge, restaurant, bar and a 120 seat main conference room.

The historic address, which was rebuilt in 1910, was where investigations into the likes of Jack The Ripper were centred.

Undergoing a sensitive conversion it will maintain the principle elements of the original building.

Once construction has been completed it will become one of the capital's most expensive hotels.

TOBACCO DOCK HOTEL

To the north of the historic Tobacco Dock, the Tobacco Dock Hotel will include 242 fully serviced hotel rooms and 63 apartments, a restaurant and cafe facing a publicly accessible piazza.

The design features a dramatic six storey entrance atrium, and interiors also reference the docks' original use as a warehouse for tobacco, wines, wool, and animal skins in the 1800s.

Pre-construction archaeology on the site revealed an even earlier history, uncovering evidence of a bath-house and other buildings built between the 2nd and 4th centuries.



Art'otel LONDON SHOREDITCH



The plan is to develop a stunning 18-storey, 350 bedroom contemporary new hotel.

In addition, a modern top floor restaurant and bar as well as a relaxing spa open to guests will form part of the hotel's offering.

There will also be a publicly accessible arts centre, which will include an art gallery, space for video artists and photographic studios.

THE PENINSULA LONDON

The Peninsula London is a proposed 190 room hotel on Hyde Park Corner, one of London's most celebrated addresses.

The Peninsula London is planned to cater for both hotel guests and local customers. In addition to guestrooms and spa, the hotel will have shops, bars, restaurants and a ballroom.

A grand pedestrian entrance on Grosvenor Place will be accessed from a colonnade linking to an internal 'Palazzo-style' courtyard.



TRAFALGAR ST JAMES



The Trafalgar Square hotel is currently undergoing a major upgrade, becoming part of the Curio Collection by Hilton.

Named the Trafalgar St. James, a hotel with an enviable location overlooking the world-famous Trafalgar Square, the very heart of London.

The crowning glory, 'The Rooftop', is transformed into a year round rooftop hotspot, featuring a larger space, a Mediterranean style lounge, dining areas and a private glasshouse available to hire.

The hotel's 131 rooms, including 14 suites and two signature suites, offer a chic, urban vibe.

MOTEL ONE

Part of a rapidly expanding Munich based chain, this design oriented hotel on the eastern edge of the City offers a whopping 291 rooms over 15 floors. But with its simple layout and friendly bar area, it has the feel of a much smaller hotel. The wow factor is apparent immediately on entering, as guests pass through a modern lounge area lit by stylish candelabras on their way to the reception desk.

Rooms are small but striking, with a do not try this at home colour scheme of dark chocolate, aquamarine and off whites. Rooms on the upper floors facing west offer nighttime views of the City in all its vertiginous glory. Ultramodern bathrooms and comfortable beds inject a shot of luxury.

HOLIDAY INN KENSINGTON HIGH STREET

Big, and in the heart of west London, this 708-bedroom hotel, which reopened in December 2016, is one of the largest Holiday Inns in Europe.

The cavernous building includes a restaurant, a lounge bar and 13 meeting rooms, plus a gym, spa and 18-metre swimming pool.

THE NED HOTEL



The Grade I listed former Midland Bank headquarters in the City of London became a new flagship 5 star hotel from the Soho House group in spring 2017.

The Ned hotel gets its name from the architect who designed the building - Ned was Sir Edwin's nickname - and has been redesigned using the faded glamour of a 1930s transatlantic ocean liner as inspiration.

It features bars and restaurants including an American cafe, a New York style deli, Parisian cafe, Grill Room and a branch of Cecconi's.

Former offices on the upper floors, became 252 suites, restaurants and a rooftop bar with landscaped terraces, health spa and gym.

The vast Ned hotel also includes event spaces and a private members' club featuring a rooftop space with swimming pool and an underground bar in what used to be the safety deposit vault.

WELLINGTON HOTEL

Robert De Niro has just been given the go-ahead to open his first hotel in London (his third after New York and the Philippines).

The hotel is going to be located in Covent Garden, a triangular block, the Wellington. Expect it to be pretty big - the plans submitted to Westminster promise 83 bedrooms, a luxury spa and swimming pool, two restaurants, a deli/café and a members' club.

There will be alfresco dining opportunities as the hotel will focus around a central courtyard conservatory.

Opening in 2019.



THE CURTAIN HOTEL

Think Soho House with a New York accent, The Curtain scores high in the rock 'n' roll stakes!

A roof top swimming pool, private screening room and The Red Rooster restaurant, an offshoot of Marcus Samuelsson's Harlem restaurant, The Curtain is a corner of Manhattan cool in Shoreditch.

The hotel will feature 120 guest rooms, including six suites, rooftop swimming pool and lounge, spa, and more than 6,000 square feet of meeting and event space including ballroom and screening room.

The hotel will also have a private member's club.



ROYAL LANCASTER LONDON



In September 2017 the 18-storey Royal Lancaster London, one of the best-known landmarks overlooking Hyde Park, reveals the results of a £80 million renovation, completed in time for the hotel's 50th anniversary.

No corner of the hotel has been left untouched. All 411 bedrooms and suites have been upgraded and the lobby has undergone a complete redesign.

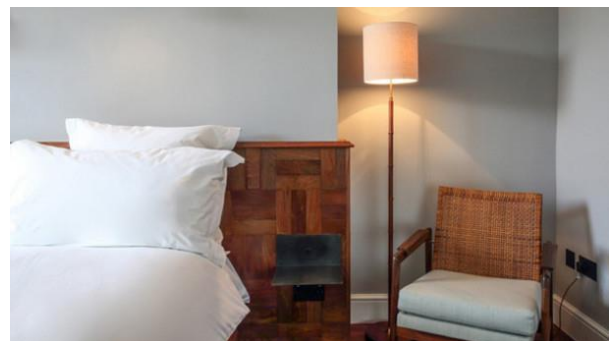
The interior design of the suites blends a mid-century aesthetic with the quirkiness of the 1960s, a nod to the swinging era when the hotel originally opened. Welcomed by a dramatic entrance façade, the large curved marble staircase leads up to the first floor - the perfect vantage point to overlook the marble, gold, polished brass and bronze of the lobby below.

THE PILGRIM HOTEL

Opening in autumn 2017, The Pilgrim is a new addition to the ever expanding portfolio of quirky and different London hotel offerings.

Making the old beautiful again seems to be the motto of the hotel.

With no reception desk, a neighbourhood cafe serves as the welcome area for guests, it doesn't feel as though you are stepping into a hotel at all, but into a very stylish home. The bedrooms come with restored furniture and fittings from 200-year-old mahogany parquet floors to original cast iron radiators, offset by a striking signature Tom Dixon 'cloud carpet'.



CROWNE PLAZA LONDON ALBERT EMBANKMENT



Located on the South Bank of London, the new hotel would offer breath taking views of the Houses of Parliaments, Chelsea and the London Eye. A quiet location, but in a vicinity of the heart of London and its famous landmarks.

Albert Embankment is undergoing significant regeneration and is set to become a hub for meetings, conferences and events in London.

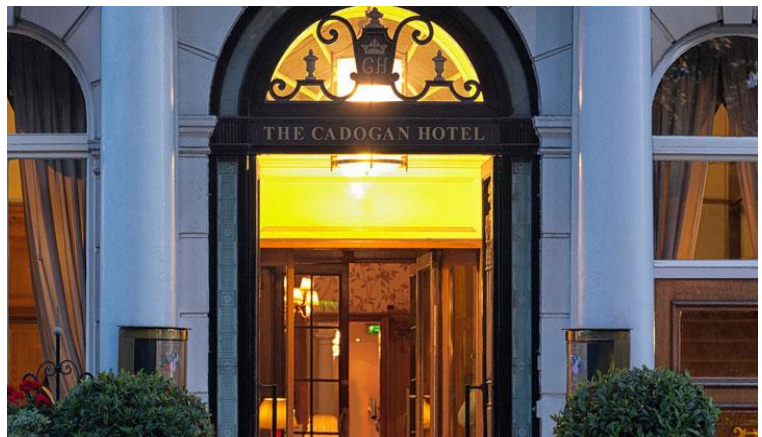
Total of 142 guest bedrooms, 2 meetings rooms and plenty of food and beverage offerings the Crowne Plaza hotel will certainly become a new London favourite.

BELMOND CADOGAN HOTEL

Opening in 2018, Belmond Cadogan Hotel is superbly located on London's prestigious Sloane Street.

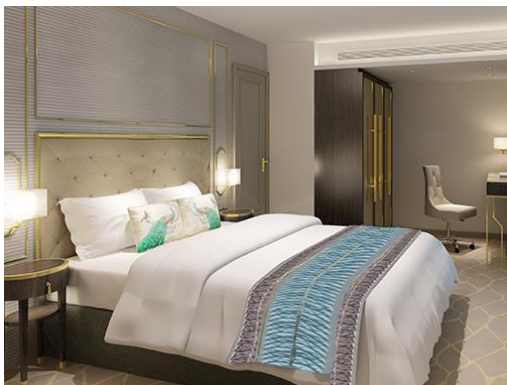
This historic property, dating from 1887, opens in 2018 fully renovated and reconceptualised.

Its 54 rooms and suites and gourmet restaurant will reflect the hotel's rich heritage, creating a stylish retreat for visitors to what is one of the world's most exclusive and luxurious shopping enclaves.



Built in Queen Anne style, Belmond Cadogan Hotel has long played an integral role in the social history of the Kensington and Chelsea. The multimillion project will draw inspiration from the neighbourhood's rich character, offering an elegant meeting place for both international visitors and the local community.

DORSETT CITY LONDON



Dorsett Hospitality International is to open its second London property in June 2017. £15 million is being spent on the 13-storey city hotel.

The hotel is located next to Aldgate Underground station and overlooking the 18th century St Botolph Church.

Dorsett City will feature 275 rooms, as well as two restaurants, a bar and 1,600 square feet of meeting space.

THE LALIT LONDON

Located in the building that originally housed St Olave's Grammar School, the Lalit London replaces classrooms with bedrooms and books with cocktails.



The first overseas property for the India based Lalit Group, the beautiful Victorian building has been transformed into a 70 bedroom luxury hotel. Almost all of the rooms are different and those on the top floor come with 30 foot high ceilings.

In place of the Governors' Room, all panelled walls and elaborate plaster ceiling, you will find a cocktail bar and at the centre of it all is pan Indian restaurant, Baluchi, in the former Great Hall, where original timber panelling, vaulted ceiling and gallery have been sympathetically restored.

Thankfully, being sent to the headmaster's office is more appealing than it was 50 years ago, the head's old HQ has become a luxury suite.

HUB BY PREMIER INN SPITALFIELDS

Taking inspiration from Japanese capsule hotels, the Hub is Premier Inn's new high-tech offering. Guests book and check-in via an App, although there is a reception desk for those who prefer to do things the old fashioned way. Low key branding means it's hard to spot the hotel on London's Brick Lane, it is only identifiable by a lime green sign outside. Once inside, you are greeted by a row of touch screens and an illuminated, interactive map of the area on the wall.

Bedrooms are essentially sleeping pods where you use the app to control functions such as heating, lighting and TV.

HARD ROCK HOTEL LONDON

A conversion of the existing Cumberland Hotel, once frequent host to guitar legend Jimi Hendrix, the upcoming Hard Rock Hotel London will be ideally situated in one of the city's most sought after locations, opposite Hyde Park.

Offering panoramic views over the park, the 900 room hotel is scheduled for completion in summer 2018.



NEW BRAND ALERT!

ACCOR'S NEW CONCEPT- JO & JOE'S

The hotel chain Accor is planning to revolutionise hospitality for travellers with its new brand Jo & Joe's, combining the best of hotels, hostels and homestays for an awesome holiday experience.



The brand considers itself an “Open House”, and this concept means that both “tripsters” (Jo & Joe guests) and “townsters” (local residents) are invited to hang out together like they would in their own living rooms.

As well as the chance to socialise and eat together, Jo & Joe will lay on a host of events, from concerts to DIY workshops. It is hoped that this will promote interaction and foster positive community living, while the locations will boast exclusive, innovative designs.

Jo & Joe has teamed up with the renowned British design agency Penson, best known for creating visionary campuses and venues for companies like Google, PlayStation and Jay Z's ROCnation. The brand also consulted with potential future guests during the development process to take into account of their needs and preferences.

Breaking free from the conventions of standard hotels, Jo & Joe promises to cater for all types of people, whether they're travelling alone, in pairs, in groups or as a family.

The “Happy House” is a private area where guests can relax, or work.

“OOO!” stands for “Out of the Ordinary”. These rooms offer unexpected accommodation for people travelling alone or in groups of up to six people, and differ at each Jo & Joe venue. These vary from yurts to hammocks and even caravans.

The social centre of each location, the Jo & Joe bar offers a unique design and is visible from the street to encourage local residents to mingle with the guests.

The hotel chain aim to open the new hotels by 2020 worldwide.

NEW RESTAURANTS 2017



LONDON®
& PARTNERS

MALIBU KITCHEN AT THE NED

Malibu Kitchen is a little slice of California in the City.

One of nine restaurants on the ground floor of super swish hotel The Ned, this clean-eating kitchen quite literally looks on the bright side. A slender, beautifully proportioned strip of a restaurant, enormous arched windows run along one wall, flooding the place with light.

Grab one of the cute mini-booths directly under the windows and you can almost make believe you are looking out onto the Pacific.

The food is just as sunny. A good half of the menu is vegan and vegetarian, and the rather lovely surprise is that it's not just virtuous, it actually tastes good, too.



ELLA CANTA

Chef Martha Ortiz of Dulce Patria (heralded as one of Latin America's most exciting restaurants) is bringing her celebrated Mexican gastronomy to London in a new restaurant at InterContinental London Park Lane, Ella Canta!

Martha's philosophy will be brought to life by David Collins Studios and will be located at one of London's most prestigious addresses, with an exclusive entrance positioned where Mayfair, Knightsbridge, Hyde Park, and Piccadilly all converge.

PETERSHAM NURSERIES COVENT GARDEN



Petersham Nurseries is bringing nature and elegance to the heart of Covent Garden with an unparalleled lifestyle destination that captures the unique spirit and rare beauty of Petersham Nurseries, Richmond.

Floral Court, a central courtyard with access from both King Street and Floral Street, will be transformed into an inspirational haven.

Petersham Nurseries Covent Garden will include a lifestyle home and garden shop, a delicatessen with a wine cellar and florist and two restaurants.

SUSHISAMBA COVENT GARDEN

Sushisamba is set to occupy Covent Garden's famed Opera Terrace within the historic Market Building, creating the latest visionary London restaurant scheduled to debut this autumn.

The global restaurant brand has long been recognized for the impressive venues around the world and the choice of Covent Garden as the location for the new Sushisamba restaurant reflects the vibrant dining offering that Covent Garden Estate has successfully crafted in recent years.

LA DAME DE PIC

The new Four Seasons hotel in the City has brought in one of France's top chefs to run the restaurant.

Anne-Sophie Pic has three Michelin stars in France and will be looking to get a few more in London.

Aside from seasonal cooking and local ingredients, Anne-Sophie is known for her unlikely flavour combos, like white cheese ice cream with rocket and cardamom for starters, or beef with smoked coffee for mains.



Everything is bound to feel very French indeed, not least of all the interior which has been built to evoke the feel of classy Parisian brasseries. With a private wine cellar to round it all off, you will be in for a very special evening indeed and look out for that millefeuille dessert.

THE COAL SHED

The Coal Shed is offering upmarket steak and fish in London. The venue is housed within a glass box just steps away from the iconic Tower Bridge.

After the roaring success of its sister location in Brighton, the venue offers the same high quality food created from locally sourced, seasonal, sustainable ingredients. The Coal Shed enhances the surf and turf concept by having much of its menu cooked on hot coals, like its 35-day, dry-aged Scottish steaks.

DUCK AND WAFFLE LOCAL

A new Duck and Waffle has set up shop in St James's Market. But it's not the same as the sky-high original, this time it's being billed as a "fast casual, chef-curated restaurant".

So for this restaurant you will order at the counter before getting a table - and there will be takeaway too. It's a very different beast (or duck) from the original.

A carefully created selection of delicious duck dishes, straight-from-the-garden mains and an epic breakfast. Serving all of it to you faster than two shakes of a duck's tail.

The key thing is, of course, that it's still led by Dan Doherty as Chef Director, and duck will be at the centre of the menu.

JEAN GEORGES AT THE CONNAUGHT

Jean-Georges at The Connaught is a meeting place for both guests and neighbourhood. It overlooks fashionable Mount Street, in the heart of Mayfair, and offers informal gourmet dining, all-hours, in a relaxed, contemporary setting.



Breakfast, lunch, afternoon tea and dinner are all served here, along with a carefully curated menu of tasty cocktails; and an extensive wine list is drawn from The Connaught's 6,000-bottle cellar.

Eclectic, imaginative menus are inspired both by Jean-Georges' experiences of the Far East and his signature use of South-east Asian flavours, whilst also featuring his distinctive take on British and Connaught classics, influenced by his earlier working life and love of London.

Illustrating the way The Connaught balances its distinguished heritage with a passion for the new, the restaurant has

been redesigned. Wall-to-ceiling windows, accented with stained glass, create a light, vibrant mood that reflects the appealing colours served on the plates.

KITTY HAWK DEPARTMENTS OF DINING

From early coffees to confessions over cocktails and everything in between, The Kitty Hawk is an all day destination for those with a love of food, drink and discovery.

Explore five bespoke dining experiences under one roof, at the heart of city.

The Kitty Hawk is infused with a heady blend of London cool and New York glamour. With polished concrete, exposed iron and tiled interiors, the five departments link together seamlessly.

Whatever your mood, there is a social hub here to suit you. The capacity is 400 guests dining.



RED ROOSTER

Marcus Samuelsson's acclaimed Harlem restaurant is opening in the new Curtain Hotel in Shoreditch. The American original has welcomed President Obama and Sir Paul McCartney through its doors, and this London version, which will open in the summer, is looking to attract the same celebrity buzz. The menu will be stuffed with soul food favourites, with fried chicken and waffles sure to feature prominently.

THE IVY TOWER BRIDGE

The Ivy Collection has opened their new The Ivy Tower Bridge restaurant.

Making the most of its riverside location and views of the iconic Tower Bridge and Tower of London, The Ivy Tower Bridge is an ideal spot in which to relax after a walk down the river, enjoying its many attractions and landmarks.

The two-storey restaurant offers guests the choice of dining in the restaurant while enjoying river views through floor to ceiling glass windows, or outside on the Parisian-style al fresco terrace, which seats 50 and directly overlooks the River Thames.

NO29 POWER STATION BATTERSEA



Power stations can give rise to a lot of rumours. If they have taught us anything- there is no smoke without fire.

So we can confirm that anything you might have heard about No. 29 Power Station West- a vast, achingly stylish all-day eating and drinking space that popped up in the new Battersea Power Station development- is completely true.

Is an epic, industrially styled space, with bespoke Crittall doors and workshop-style fittings nestled alongside art deco touches and decadent velvet-cloaked furniture in a nod to the Power Station's origins.

They are serving up everything from brunch to dinner alongside an almost comically large selection of wines, craft beers, draught beers and seasonal cocktails.

NOBU SHOREDITCH

The Nobu restaurant seats 240 guests, including a sushi counter, lounge and bar area, and an outdoor courtyard.

Pioneered and created by Chef Nobu Matsuhisa, the iconic Nobu menu is influenced by his years of studying Japanese cuisine in Tokyo and his extensive travels. The diverse celebration of flavours formed Nobu's trademark 'Nobu Style', which is intrinsic to all Nobu menus worldwide.

Nobu has long been a favourite in London, with Shoreditch being the city's third locale. The stunning bar offers guests a great place to relax with friends and enjoy signature cocktails. Guests can escape to a garden oasis adjacent to the bar for a more intimate setting.



THE LAST TUESDAY SOCIETY

We are assuming that the last time you had a drink with a lioness in a red top hat who prefers to be addressed as Leonora...was probably never.



But the last place that happened was probably Last Tuesday. Confused? Allow us to explain.

The Last Tuesday Society is a cocktail bar-cum-curiosity museum founded by eclectic dandy 'pataphysicist, Viktor Wynd. A magpie for the freakish, macabre and wonderful, he has filled the candlelit rooms with cherished finds ranging from skulls and taxidermied animals to fine art, pinned up on the dark lacquered walls and, in the case of Leonora, even sharing your velveteen banquette.

With a formidable cocktail menu inspired by the bar's decor, this is the kind of place where a fly in your drink is probably intentional. The list is seductively dark and dangerous sounding, with concoctions like the Alchemist #88, garnished with a North American Coyote claw (to keep, not eat); or the Scorps Reviver, garnished with an edible scorpion tail.

Once your cocktail is safely in hand, you will make your way downstairs to explore Wynd's Museum of Curiosities, with crammed shelves and cabinets overflowing with the mysterious and the shocking; skeletons and scientific abnormalities, shrunken heads and exotic souvenirs. The showpiece of the museum is the Sarcophagus, a coffin shaped table with a skeletal centerpiece, around which the society hosts storytelling evenings, lectures and literary discussions, séances, private parties, petting zoos and taxidermy lessons.

HAWKSMOOR BOROUGH

The new Hawksmoor restaurant is situated in what was once a Victorian hope warehouse and later a fruit auction hall. The restaurant draws on its location with the mantra 'buy the best and prepare it as simply as possible'.

The restaurant looks and feels like it belongs in this historic Borough warehouse, retaining some of the original features with the addition of reclaimed materials.

The menu at the restaurant features many of Hawksmoor's signature steaks and classics and of course, Sunday roasts. There is also the Market Specials menu which is unique to Hawksmoor Borough and will change regularly, making the most of the best seasonal produce available at Borough market.



LEICESTER SQUARE KITCHEN



Embracing the art of shared dining in the heart of London's most iconic square, Leicester Square Kitchen offers relaxed luxury in a sophisticated yet unassuming setting.

Showcasing an exquisite selection of contemporary Mexican and Peruvian small plates, each dish celebrates the vibrant flavours and ingredients from both continents and delivers an authentic dining experience.

THE FROG COVENT GARDEN

A much larger restaurant, with a more formal approach than The Frog E1 off Brick Lane, the new venue will showcase Chef Adam Handling's innovative cooking style, combining impressive technical skill with the best possible produce. With a sizeable open plan kitchen and large private dining room downstairs with its own kitchen, The Frog will have space for 90 covers.

THE LAMPERY

Taking inspiration from Samuel Pepys, one of Seething Lane's most illustrious former residents, all day dining spot The Lampery is opening within Apex Hotel City of London, a short walk from Tower Bridge.

At The Lampery, a 'Best of British' menu will celebrate the diversity of British cuisine today, with prominent historical nods to Samuel Pepys, the MP known for his 17th century diary detailing life in the capital at the time, notably featuring accounts of both the Great Fire of London and the plague.

BANG BANG ORIENTAL



Chinatown goes north and inside. A huge new Asian food hall with 33 kiosks and room for 450 diners.

Up in Colindale, previously home to other giant Asian developments like the now defunct Oriental City and Pacific Plaza, there's a new contender on the scene, the Bang Bang Oriental and it's bringing Pan-Asian food, shops and lots more to draw you up North.

The stands and restaurants will be dishing up food from loads of different countries; Chinese, Korean, Japanese, Indian and Vietnamese will all get a look in, plus some underrepresented cuisines like Malaysia, Singapore and Taiwan.

TEAM BUILDING AND INCENTIVES 2017



AFTERNOON TEA BUS TOUR



Capture the heart of the city's culture, landmarks and history on the famous London Routemaster buses, whilst sipping on a lovely cup of tea accompanied with an array of tasty sandwiches and delicious cakes and pastries.

The London bus driver will take you round, taking in the city's best sights.

SECRETS OF TOWER OF LONDON- BEHIND THE SCENES TOUR

With a presence on this site for nearly 1000 years, the Tower of London has a long and colourful history and certainly has many secrets to tell.

This is an exclusive 1 hour tour, taking you into areas of the Tower normally hidden from view to access locations that show the beauty and the harshness of life in the Tower and uncover a few of its many secrets.

Since it is a secret, the route is shrouded in mystery, however to give your clients a sneak peak they will be entering out of bounds areas including Queens House, St Thomas More Crypt, Chapel Royal and entering famous prisoners cells who were kept at the Tower.

CRYSTAL MAZE

A live, immersive experience! Faithful to the original and popular TV programme, visitors, in teams of eight, will work their way through games in four zones – Future, Medieval, Aztec and Industrial – completing a series of timed challenges before heading to the famous Dome itself.

THE LONDON SHUFFLE CLUB



The Shuffle Club invite guests to their industrial space in Shoreditch to try their hand at shuffle boarding, a sport that's over 500 years old.

With a 22 foot practice court and a handful of tutorials, you will first learn all about the sport, before battling it out with your colleagues in a thrilling match on one of their eight courts.

To complete the event, there are two bars and a number of food options to help keep energy levels high.

ALIEN ESCAPE EXPERIENCE AT MADAME TUSSAUDS

EVERYONE will hear you scream! A heart-racing addition to your next event at Madame Tussauds!

In July Madame Tussauds London unveiled its brand new immersive Alien: Escape experience, set to terrify willing guests. Generations have watched the iconic film franchise and now, thanks to the London attraction, brave wannabe crew members can step on board the Covenant ship and come face to face with the Xenomorph.

Created in partnership with FoxNext Destinations, the new experience follows the release of the critically acclaimed blockbuster film, *Alien: Covenant* and challenges guests to navigate a trail of blood, gore, chaos and danger. The mission is simple: Run. Survive. Escape.

Hollywood heavyweight Michael Fassbender's first wax figure, will join courageous guests on their gruesome quest. The multi-sensory fright fest will also take some of the most infamous and petrifying sci-fi creatures ever to hit our screens and place them in front of guests in all their heart racing and bloodcurdling glory.



Madame Tussauds London has worked side by side with *Creatures Inc.*, the genius design team behind the *Alien: Covenant* film, in the creation of the immersive experience. The creative minds that helped celebrated director Ridley Scott to bring fear to screens across the globe now bring a chillingly accurate experience to the world famous attraction, giving fans the closest imaginable *Alien* experience possible.

Are you brave enough to enter Alien: Escape? Do you have the courage to journey out the other side? You will run, you will scream, but will you escape? Get a real life taste of the famous franchise through Madame Tussauds London's Alien: Escape experience...if you dare.

TAKE TO THE TRACK AT LONDON STADIUM



London Stadium has added to its meetings and events portfolio by launching team build packages. The former Olympic Stadium is home to West Ham United and UK Athletics, and the packages utilise the Community Track following the IAAF World Athletics Championships. The track was used for the elite athlete warm ups during London 2017 so delegates will tread the track where Usain Bolt, Mo Farah and world athletes ran.

To bring the packages to life, London Stadium has partnered with top team build events. Packages include Street Olympics, The Games and Crystal Challenge that have been styled specifically for the stadium, to reflect the legacy and history that has already been created.

Since London 2012, the stadium made a promise to remain an active part of the community and help consolidate Queen Elizabeth Olympic Park as a destination of choice for inspirational events. With a diverse range of packages and spaces available for hire, the stadium is becoming the go to venue for creative, motivational and rewarding events.

FLIGHT CLUB SHOREDITCH

Flight Club team building combines fun teambuilding activities and strategic business sessions to create a unique and fully-managed away day solution.

Start your day with a welcome coffee and an opening presentation, before moving into an experience rotation which includes a cocktail masterclass, pizza making, darts tuition.



Then, bring the day to a crescendo with an epic darts tournament where people can cut loose and let their competitive side show.

AFTERMATH

Aftermath is an immersive game with a difference, it comes to you.

Perfect for an office party or team building with colleagues, the game will have you working against the clock to try and prevent the end of the world, no biggie then.

LONDON NEWS AND TIPS

2017



BREXIT AND LONDON

On 23rd June 2016, the United Kingdom voted to leave the European Union (EU).

Prime Minister Theresa May formally notified the EU of the UK's intention to leave on March 29th 2017. A long and complex series of negotiations is now underway over the future relationship of the UK and the EU. Until the UK formally leaves the EU in March 2019, the relationship between the two will remain unchanged. During this period, citizens of the EU, EEA and Switzerland may still enter the country without requiring a visa.

There is also no indication of immediate changes to travel regulations for visitors from outside of Europe as a result of the UK leaving the European Union.

Future travel regulations and immigration policy between the EU and the United Kingdom will be decided as part of the negotiation period. The UK government has stated that no changes to immigration policy will be made without the formal consent of parliament, in the form of an immigration bill.

CHINESE SINGLE VISA TO UK AND EUROPE

Chinese tourists and entrepreneurs can now obtain UK and European visas in a single process. FCO provides an on-demand visa service which is currently available in 59 cities.

In addition, they also operate a mobile visa service whereby a representative will go to a location of the applicants' choice, take their biometrics and check through the application form. The process takes approximately five minutes and group sizes of up to 100 can be accommodated.

UKVI SPRING 2017 CAMPAIGN

When people from overseas are considering a holiday abroad, the thought of the UK visa application process can put them off choosing Britain as their destination. It is unfairly perceived as too slow and complicated.

To help change this view, UKVI has launched a social media activity in key visit visa markets at the beginning of the peak application period, to improve perceptions among potential travellers and encourage travel to the UK.

THE UK IS JUST THREE STEPS AWAY is aimed at independent travellers in countries where a visa is required to visit the UK, including China.

Applying for a UK visa is easier than you think. Follow the 3 simple steps to start your great British adventure www.gov.uk/visituk

London & Partners

6th Floor, 2 More London Riverside
London SE1 2RR

+44 (0)20 7234 5800

londonandpartners.com