

# LUMIERE *London*



SEE THE CITY IN A NEW LIGHT

14 - 17 JANUARY 2016

VISITLONDON.COM/LUMIERE

## ABOUT LUMIERE

Lumiere London is a major new light festival that, over four evenings, transforms many of the capital's most iconic streets and buildings in the West End and King's Cross. It brings together some of the world's most exciting artists working with light. Expect large-scale video-mapped projections, interactive pieces and jaw-dropping installations.

**Produced by Artichoke and supported by the Mayor of London, Lumiere London is completely free to attend. Plan your visit using the map inside, and get ready to see the capital in a new light.**

**THURSDAY 14 - SUNDAY 17  
JANUARY 2016  
6.30PM - 10.30PM**

### Don't miss...

The Heart and Soul of the City  
Free event, supported by Bloomberg  
Philanthropies  
Friday 15 January, 2pm - 4.30pm

Lumiere London artists discuss and debate the life of the city and the public realm, and how they can be transformed by communities and artists.

Bloomberg London Headquarters  
City Gate House, 39-45 Finsbury Square,  
London, EC2A 1PQ

**Find out more and get your ticket:**  
[visitlondon.com/lumiere/symposium](http://visitlondon.com/lumiere/symposium)

## TRANSPORT ADVICE



The best way to experience Lumiere London is on foot. Use this map or download the London Official City Guide app (from the App Store or Google Play) to find your way around.

**Please leave your car at home, walk or use public transport when possible. There will be road closures to facilitate the festival, which will cause significant disruption to road traffic in Central London.**

During Lumiere London, expect Tube stations and bus routes nearby to be busier and operate differently from normal, especially on the evenings of Thursday 14 and Friday 15 January.

For updated travel advice across Central London during the festival, please visit [tfl.gov.uk/lumiere](http://tfl.gov.uk/lumiere)

For festival news and updates follow [#LumiereLDN on Twitter](https://twitter.com/LumiereLDN)

### Got a question?

Look out for the Team London volunteers who are on hand to help you during the Lumiere London festival.

AN  
**ARTICHOKE**  
PROJECT

SUPPORTED BY  
**MAYOR OF LONDON**

Supported using public funding by  
**ARTS COUNCIL**  
ENGLAND  
LOTTERY FUNDED

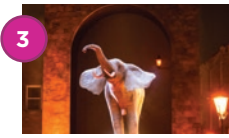
## Piccadilly, Regent St & St James's



1 Garden of Light, TILT



2 Les Luminéoles, Porté par le vent



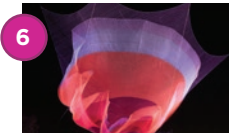
3 Elephantastic, Top'la Design / Catherine Garret



4 Shaida Walking. 2015, Julian Opie



5 Keyframes, Groupe LAPS / Thomas Veyssière



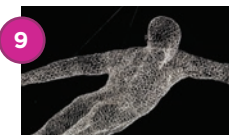
6 1.8 London, Janet Echelman / Studio Echelman



7 195 Piccadilly, NOVAK



8 I Haven't Changed my Mind in a Thousand Years, Beth J Ross



9 Les Voyageurs (The Travellers), Cédric Le Borgne

## Trafalgar Square, Westminster



10 Plastic Islands, Luzinterruptus



11 Centre Point Lights



12 Neon Dogs, Deepa Mann-Kler



13 The Light of the Spirit, Patrice Warriner

## Mayfair



14 Sanctuary, Sarah Blood



15 Dissect I and Dissect II, Sarah Blood



16 Spinning Night in Living Colour, Elaine Buckholtz



17 Brothers and Sisters, Ron Haselden



18 Lightbench, Bernd Spieker for LBO-Lichtbankobjekte



19 Aquarium, Benedetto Bufalino & Benoît Deselle

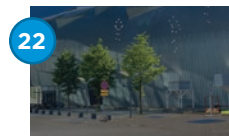
## King's Cross



20 Platonic Spin, Nathaniel Rackowe



21 IFO (Identified Flying Object), Jacques Rival



22 Joining the Dots, Cleary Connolly



23 King's Cross Tunnel, Allies and Morrison / Speirs + Major



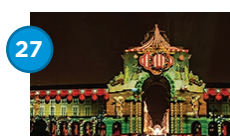
24 Dresses, Tae gon KIM



25 Light Graffiti, Floating Pictures



26 binaryWaves, LAb[au]



27 Circus of Light, OcuBo



28 Lite of Light, Mick Stephenson, Central Saint Martins Students & MyShelter Foundation



29 Spectra-3 Lux, FIELD.io



30 Diver, Ron Haselden

## OTHER EVENTS

### • 4 - 22 January

Portal | Nathaniel Rackowe  
12 Hay Hill, London W1J 6DQ

In association with House of the Nobleman  
houseofthenobleman.com

### • 11 - 22 January, 4pm - 9pm

Winter Lights Festival @ Canary Wharf  
Throughout Canary Wharf, 18 light installations by innovative artists from across the world. Free.  
canarywharf.com

### • 13 - 31 January

The Mayor Gallery presents  
Calculations, Permutations, Notations | LAb[au]  
Art Bermondsey Project Space,  
183-185 Bermondsey St, London, SE1 3UW  
mayorgallery.com

### • 14 - 17 January, 6pm - 9pm

ANON | Walter & Zoniel  
Gazelli Art House, 39 Dover Street, London W1S 4NN  
A surrealist site-specific installation, housing luminous older people as living sculptures.  
walterandzoniel.com

### • 14 January - 12 March, 11am - 6pm (closed Sundays)

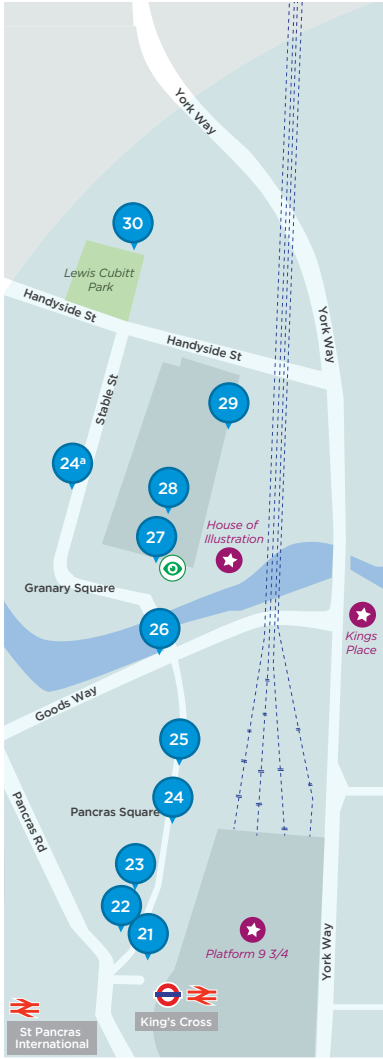
More Noise | Tim Etchells  
Bloomberg SPACE, 50 Finsbury Square, London, EC2A 1HD  
bloombergSPACE.com



**KEY**

- Piccadilly, Regent St & St James's
- Trafalgar Square, Westminster
- Mayfair
- King's Cross
- ★ VIP Hub
- Tube stations
- Train stations
- Find the Land Rover Private View
- Places of interest

**IMPORTANT** Please note, due to circumstances out of the event organiser's control, the programme may be subject to change or cancellation.



## SUPPORTERS

THANK YOU TO OUR SUPPORTERS WHO GIVE SO GENEROUSLY TO HELP ARTICHOKE PRODUCE LUMIERE LONDON.

Artichoke is a registered charity and every penny received from the public, businesses, trusts and foundations goes directly towards the festival and keeping it accessible for everyone to attend.

### FOUNDING PARTNERS



Bloomberg  
Philanthropies

Heart of  
**LONDON**  
Heart of London Business Alliance  
West End Business Improvement Districts

**LONDON**  
& PARTNERS

King's Cross

### MAJOR SUPPORTERS

THE CROWN  
ESTATE



GROSVENOR



REGENT  
STREET  
ASSOCIATION

Shaftesbury

### EVENT SUPPORTERS



DAVID AND CLAUDIA HARDING  
FOUNDATION



### SUPPORTERS

aggreko

CENTRE POINT  
LONDON



D&D  
LONDON



GODFREY SYRETT

design/make/deliver



LEVY.  
INTELLIGENCE IS OUR REAL ESTATE



ual: university of the arts london central saint martins

wellcome trust

### WITH THANKS TO

the athenæum

The BEAUMONT



FORTNUM & MASON  
PICCADILLY SINCE 1707



Artichoke would also like to thank the individuals who have supported Lumiere London, including Daniel Peltz, Mercedes Zóbel and those who wish to remain anonymous.