

A vibrant night photograph of the London skyline. The London Eye is the central focus on the left, illuminated with bright yellow and blue lights. Its reflection is visible in the dark water of the River Thames. In the background, the city's lights and several bridges are visible under a deep blue twilight sky. A white rectangular frame is superimposed on the right side of the image, containing the title text.

# EVENT PLANNER GUIDE **2020**

**LONDON**  
CONVENTION BUREAU





# CONTENTS

|                             |          |                        |           |                         |           |
|-----------------------------|----------|------------------------|-----------|-------------------------|-----------|
| <b>WELCOME TO LONDON</b>    | <b>4</b> | <b>TEAM BUILDING</b>   | <b>17</b> | <b>TRANSPORT</b>        | <b>46</b> |
| – How we can help           | 5        |                        |           | – Getting around London | 48        |
| – London at a glance        | 6        | <b>SECTOR INSIGHTS</b> | <b>19</b> | – Elizabeth Line        | 50        |
|                             |          | – Tech London          | 20        | – Tube map              | 54        |
|                             |          | – Financial London     | 21        |                         |           |
|                             |          | – Creative London      | 22        |                         |           |
|                             |          | – Medical London       | 23        |                         |           |
|                             |          | – Urban London         | 24        |                         |           |
| <b>DISCOVER YOUR LONDON</b> | <b>8</b> |                        |           |                         |           |
| – New London                | 9        |                        |           |                         |           |
| – Luxury London             | 10       |                        |           |                         |           |
| – Royal London              | 11       | <b>PARTNER INDEX</b>   | <b>26</b> |                         |           |
| – Sustainable London        | 12       |                        |           |                         |           |
| – Cultural London           | 14       | <b>THE TOWER ROOM</b>  | <b>44</b> |                         |           |
| – Leafy Greater London      | 15       |                        |           |                         |           |
| – Value London              | 16       |                        |           |                         |           |

## Opening its doors after an impressive renovation...

This urban sanctuary, situated in the heart of Mayfair, offers 307 contemporary rooms and suites, luxurious amenities and exquisite drinking and dining options overseen by Michelin-starred chef, Jason Atherton.

Four flexible meeting spaces, including a Ballroom with capacity up to 700, offer a stunning setting for any event, from intimate meetings to banquet-style parties and weddings.



# WELCOME TO LONDON

**Thanks for taking the time to consider London for your next event.**

Whether you're looking for a new high-tech space or a historic building with more than 2,000 years of history, we're delighted to introduce you to the best hotels and venues, as well as the DMCs who can help you achieve that wow-factor.

The city is home to more than 1,000 diverse venues, from blank canvas warehouse spaces to purpose-built conference centres, grand palaces and state-of-the-art auditoriums. There are more than 159,000 hotel rooms from budget to boutique and group activities that will help you explore your creative potential! Whether it is for 10 or 35,000 attendees, an exclusive incentive programme or a city-wide tech event – London has it all.

So why not bring your delegates to the capital and let them enjoy all that we have to offer.

Please use this Event Planner Guide as a practical index and inspiration – and contact the London Convention Bureau team for assistance with your next London event.



**Tracy Halliwell MBE**

Director Tourism, Conventions & Events  
London & Partners



## How we can help

As London's official convention bureau, we're here to help you create a world-class experience for your delegates. We make it easy to find the best venues, hotels and activities, while connecting you with specialists who can help organise your event.

We can help you save time with:

- Free, impartial advice about venues, hotels, PCOs and DMCs.
- Creative ideas for delegate activities and entertainment.
- Travel advice and group discounts on travel across London.
- Incentive ideas for clients.
- Site inspection planning.

## Stay connected

🌐 [conventionbureau.london](https://conventionbureau.london)  
✉ [conventionbureau@londonandpartners.com](mailto:conventionbureau@londonandpartners.com)  
☎ +44 (0)20 7234 5833 (UK)  
☎ +1 646 844 0556 (US)  
@ [london\\_cvb](https://twitter.com/london_cvb)  
@ [@London\\_CVB](https://twitter.com/London_CVB)

## Register for updates

**[conventionbureau.london/register](https://conventionbureau.london/register):** find out what's happening in London with our monthly event planner newsletter.

**[londonandpartners.com/eye-on-london/register](https://londonandpartners.com/eye-on-london/register):** help us promote London by receiving the latest stats and insights to share with your network.

The London Convention Bureau is part of London & Partners, the Mayor of London's official promotional agency. We promote London internationally as a leading city in which to invest, work, study and visit.

# LONDON AT A GLANCE



**6 Airports**

**400**

International destinations within a direct flight to London

**9,900**

**hotels rooms**

to be built by 2020



**233**

languages

**spoken**



**71**

**Michelin stars**

18,100+ places to eat



**478**

Art Galleries

**1,000+**

Diverse venues



**4 UNESCO**

World Heritage sites



**190+ free museums**

**More than**

**28,500**

performances a year across London's music venues, including The O2 – the world-famous entertainment venue



**London Fashion Week**

generates £269 million and welcomes over 105,000 visitors



London Tech Week hosts more than 300 events attracting over 55,000 attendees



**First edition**

of London Climate Action Week hosted over

**20,000**

people and 150 events



**£14.2bn**

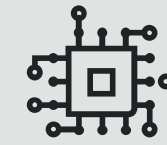
**annual turnover**

generated by London-based life sciences companies



**776,000**

people employed in London's financial services industry



**51,600**

digital tech businesses in London, contributing 263,000 jobs



**883,000**

people working in London's creative economy





# DISCOVER YOUR LONDON

## NEW LONDON

**Experience a different side of London during each visit, as exciting new spaces open every year.**

Take advantage of the state-of-the-art AV facilities at **155 Bishopsgate**. This latest offering in the **etc.venues** portfolio features three suites, with the largest accommodating up to 600 people for a conference or 400 for a seated dinner.

Head to the river Thames for a water-based experience. Jump aboard the **Silver Sturgeon** via their new pier at Embankment and treat your guests to a drink at the dramatic steel and glass bar on the Upper Deck. Or why not supersize your event on the stunning **OCEANDIVA** multi-purpose ship – the first CO2 neutral floating venue in the world with space for up to 1,500 guests.

If you're looking for stunning wrap-around views of London, visit the **Atmosphere 28 – Sky Loft**, situated in the Millbank Tower. The reclaimed wooden flooring and exposed brickwork create the perfect setting for your corporate event.

Continue to create memorable experiences at the **Hilton London Metropole** – one of Europe's largest conference hotels. There's up to 4,100 sqm of pillar-free space and its recently renovated ballroom is not to be missed.

As a global city, it's no surprise that London continues to wow delegates with its accommodation options. The **Mandarin Oriental** recently completed the most-extensive restoration in its history – a phenomenal project overseen by reclaimed designer Joyce Wang. **Edwardian Hotels London** is set to open its 12th hotel in the capital, **The Londoner**. Located in the popular Leicester Square, this hotel comes packed with bars, restaurants and two Odeon cinemas. Keep an eye out for a future film premier taking place at this iconic venue.

For something a little quirky, explore **nhow London**, the company's first UK venture. Situated in the heart of east London, this design hotel has three laboratories for hosting events, each with a character of their own. Be sure to end the day with a delicious meal next to the cosy log fire.



### Hidden gems:

*The Arch London | The LaLiT London | Prince Philip House*





## LUXURY LONDON

Discover London's luxurious offerings, from Michelin-starred restaurants to spectacular views over the city.

Embrace some of the finest views from any bedroom at the **InterContinental London – The O2** and you might be lucky to spot some famous musicians who perform in the famous arena. Stay in the capital's highest hotel, **Shangri-La Hotel, At The Shard, London** with spectacular all round views of the capital. One of the city's newest hotel openings, **Kimpton Fitzroy London** has a fabulous Palm Court at its heart.

Ensure delegates are well catered for at a top restaurant – try seasonal dishes at **JW Marriott Grosvenor House London** or experience culinary excellence at the Maybourne Hotel Group, which has two Michelin-starred chefs in residence: Marcus Wareing at **The Berkeley** and Hélène Darroze at **The Connaught**. Michelin-starred chef Tom Kerridge at the **Corinthia Hotel London** created the first London restaurant harking

back to classic dishes and traditional techniques or for an exquisite private dining experience, choose Roux's legendary culinary expertise and creativity at **The Langham, London**.

Other sumptuous offerings include traditional afternoon tea at **Claridge's** or at the Winter Garden Restaurant in **The Landmark London**. Taste another classic at the Pie Room at **Rosewood London**, where one of Britain's most iconic dishes is served with dedication.



### Hidden gems:

*The Goring | The Hari | The Stafford | 11 Cadogan Gardens*

## ROYAL LONDON

Uncover London's rich history with truly regal events in royal palaces and stunning halls.

Let your delegates sample a taste of royal life by exploring one of London's many palaces. Each year, from late July until the end of September, the lavish **Buckingham Palace** opens its doors to visitors and showcases a special exhibition.

From here, you can stroll through St James's Park, one of eight **Royal Parks** across the city, to **Westminster Abbey**, the historic setting of some of the most famous royal weddings and coronations.

Experience a British classic at **Fortnum & Mason** and try a luxurious afternoon tea with the finest selection of delicious treats. The tea came to boast a royal pedigree thanks to a bespoke blend specially created for King Edward VII.

Continue the journey into the capital's rich royal history with a trip to **Royal Botanic Gardens, Kew**. A short tube journey from central London, these famous gardens offer an intimate glimpse into the lives of past royal families.

For a truly memorable experience, choose a royal venue as the setting for your event. Soak up almost 400 years of history with a dinner or reception at **Kensington Palace**, which has been home to many popular royals including Queen Victoria, Diana, Princess of Wales and at present Prince William and his family.

Or, dazzle your guests with an event at **Banqueting House** in Whitehall. Home to a stunning painted ceiling by Rubens, the building was created to host extravagant court entertainment for James I.

Another of Historic Royal Palaces' venues available for private hire is the **Tower of London**, where your delegates can enjoy a drinks reception and a private viewing of the crown jewels.

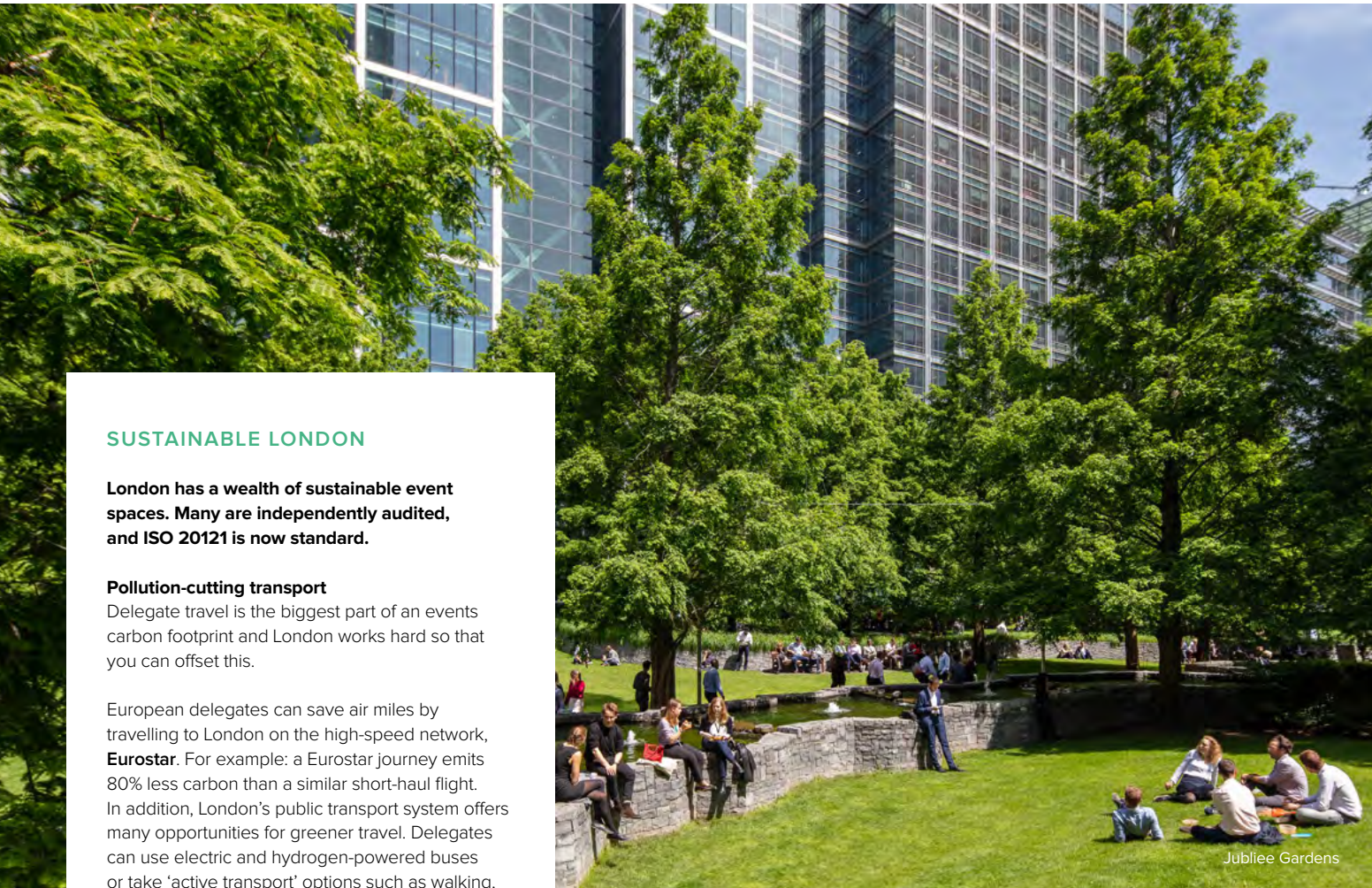


### Hidden gems:

*Hampton Court Palace | Royal Mews*







SUSTAINABLE LONDON

London has a wealth of sustainable event spaces. Many are independently audited, and ISO 20121 is now standard.

**Pollution-cutting transport**  
Delegate travel is the biggest part of an events carbon footprint and London works hard so that you can offset this.

European delegates can save air miles by travelling to London on the high-speed network, **Eurostar**. For example: a Eurostar journey emits 80% less carbon than a similar short-haul flight. In addition, London’s public transport system offers many opportunities for greener travel. Delegates can use electric and hydrogen-powered buses or take ‘active transport’ options such as walking, cycling or using rail and Tube services.

**Sustainable venues**  
**Central Hall Westminster** is one of the oldest meeting places in the UK and has a strict environmental policy. From bottling its own water onsite to ordering Fairtrade produce as a priority, its catering service is working hard to deliver green events.

**ExCeL London’s** “no plastic” campaign aims to reduce waste. Look out for its water fountains, recycling options and discounts for using your reusable coffee cup. The venue is part of the United Nations Global Compact scheme, providing annual updates on its on progress.

**Qbic London City** prides itself on being one of the greenest hotels in London. In addition to free bike hire, solar panels and organic toiletries, it offers guests staying more than one night a free drink in its bar if they choose not to have their room serviced.

**South Bank Employers’ Group** works with its members, such as the British Film Institute, King’s College and the Southbank Centre to drive sustainability across the South Bank area. Its Business Improvement District involves companies working together to collectively reduce their environmental impact, such as combining heat and power systems across its new developments.

TOP 5 SUSTAINABLE FACTS

The Mayor of London has set out an ambition for the city to be zero carbon, zero emissions and zero waste by 2050. Go green and use these sustainable tips for your stay in London:

- 1. London is the world’s first **National Park City**, with 33% of its area dedicated to green space. Take the opportunity to enjoy a green getaway and visit one of our 151 registered parks and gardens, 8 Royal Parks and 4 UNESCO World Heritage sites.
- 2. Choose London’s **sustainable options for travelling**. All double decker buses are now hybrid and all single decker buses will be zero emission by 2020. Or flag down one of the famous black cabs – all will have zero emissions by 2033.
- 3. In addition to its public transport system, London has a **growing bike scheme** – and the first half hour is free! Santander Cycles is available 24/7, 365 days a year. There are more than 750 docking stations and 11,500 bikes in circulation across London.
- 4. Stay hydrated! London has more than **2,700 water refill stations** to replenish your bottle throughout your day and of course help contribute to minimise plastic waste. Restaurants and cafes will also refill your water bottles free of charge. Download the Refill app to find out more.



- 5. Being home to **18,000 restaurants** with cuisine from all over the world, the city takes ethical eating seriously, offering a great selection of organic restaurants, cafes and markets. A lot of restaurants source fresh local products for a healthier food system.



CULTURAL LONDON

Experience London’s culture by holding your event in one of the city’s museums, galleries or attractions – the perfect backdrop for a grand event.

Start the day with a breakfast meeting at the **National Portrait Gallery**, hosting the most extensive collection of portraits in the world with more than 250,000 works. Or arrange your event near famous works by Van Gogh and Rembrandt at the **National Gallery**; discover paintings from 1500 to the modern day during a meeting at **Tate Britain** and catch the latest exhibition at the **Royal Academy of Arts**, which has opened a new extension as part of its 250th anniversary celebrations.

Alternatively, seek out a spot alongside contemporary and modern works at Tate Modern or choose the **Victoria and Albert Museum** for more art and design, and the chance to explore the John Madejski hidden garden.

Put a historical spin on your event at one of London’s many museums. Find mummies and the Rosetta Stone in the vast halls of the **British Museum** or learn about the city’s urban transport history at the **London Transport Museum** in Covent Garden.

The City of London has a range of attractions with event spaces. Marvel at the magnificent dome at **St Paul’s Cathedral** and visit **Shakespeare’s Globe** to experience a renowned performing arts venue, cultural attraction and education centre.



Hidden gems:

Bank of England Museum | Spencer House | Postal Museum | The City Centre and Roman Amphitheatre



National Portrait Gallery



British Museum

Find film, theatre, art and music combined with fine dining and street food at the **Southbank Centre**. This central London location offers nine unique spaces, including world-class concert halls and intimate roof pavilions with riverside views.

For the adventurous type, take a trip to Hogwarts with the **Warner Bros. Studio Tour London - The Making of Harry Potter**, featuring plenty of photo opportunities for film buffs.



Royal Naval College

LEAFY GREATER LONDON

Venture outside central London and find eclectic neighbourhoods full of sports, arts and heritage venues. What’s more, these memorable venues have first-class transport links to the city centre.

As a sports-mad city, London has plenty of iconic stadia to explore. Look out onto the famous pitch at **Stamford Bridge**, home to **Chelsea FC** and do a tour of the club. With extensive events spaces and a live music venue, it offers the perfect setting for any residential event. Or, visit the state-of-the-art **London Stadium**, which hosted the 2019 Major League Baseball London Series and is now a fantastic multi-use events space. Both these venues have superb facilities for conferences, exhibitions, meetings and banquets, and host tours for sports fans.

Alternatively, enjoy some of the best views of the city skyline from the grounds of **Alexandra Palace** in north London. This Victorian palace opened in 1837 and was the site of the first public television transmissions in 1936. Today, it’s home to a boating lake, pitch and putt golf course and ice rink.

At **ZSL London Zoo** you can choose from six animal houses for a roaring event your delegates won’t forget!

For a fun day out, take a short trip to **Greenwich** by train, Tube, DLR or riverboat. This well-connected south-east London area is one of the city’s most charming riverside spots. Learn more about the world’s oldest surviving tea clipper **Cutty Sark**, explore sea-faring tales at the **National Maritime Museum**, visit the **Queen’s House** for a fantastic art collection or meander around Sir Christopher Wren’s grand **Old Royal Naval College** – all these historic attractions provide exceptional facilities.



Hidden gems:

Hilton London Heathrow Terminal 5 | Hilton Syon Park



# VALUE LONDON

Take your pick from a huge range of good-value options in London, that can help your money go further.

Hold your event at one of many **glh Hotels**, offering excellent value for money. Stay near the river at The **Tower Hotel**, which has more than 800 bedrooms and spectacular views of Tower Bridge. **Amba Hotel Marble Arch** is the perfect base to explore Hyde Park – its sister hotel, **Amba Hotel Charing Cross**, is just steps away from Trafalgar Square and the nearby bars and restaurants of Covent Garden.

Alternatively, book into **Park Plaza London Riverbank** and **Park Plaza Westminster Bridge London** near Waterloo station and the South Bank. Or base yourself at **Park Plaza County Hall** London, which is near to famous attractions such as the Coca-Cola London Eye.

Close to the Natural History Museum, the **Millennium Gloucester Hotel London Kensington** is a great location for holding a conference and dinner, surrounded by some of London's most famous museums. For event organisers in need of a flexible space, the **Business Design Centre** features both exhibition and conference areas, as well as an executive centre for smaller meetings.

Home to the Royal Academy of Engineering, Home to the Royal Academy of Engineering, **Prince Philip House** offers a modern interior contrasted against a Grade-I listed exterior and is a multifunctional event venue. As one of London's leading conference venue specialists, **CCT Venues** has four venues in four locations; these are specifically designed for training, conferences and meetings, with easy-to-work-in spaces and catering areas.



**Hidden gems:**  
*Senate House | Queen Mary University of London*



Business Design Centre





## TEAM BUILDING IN LONDON

Give your guests an authentic London experience they won't forget. The capital offers a huge variety of exciting and diverse group activities to impress.

### B Bakery

Enjoy the afternoon tea tradition served on **B Bakery's** classic Routemaster bus while taking in London's rich heritage and beautiful landmarks.

### Beefeater Gin Distillery

Get to know the gin-making process with the history of London and choose between the distillery tour or the VIP experience for your group. The gin at **Beefeater Distillery** is handcrafted in London with a recipe that has remained unchanged since the 1800s.

### Brit Movie Tours

Join a unique movie and TV sightseeing tour with **Brit Movie Tours** and get behind-the-scenes information. James Bond, Downton Abbey or Harry Potter – groups of up to 250 people can enjoy the fun walking tour.

### Bustronome

Discover beautiful 360-degree views of London's top attractions while enjoying the best of its gastronomy on the double-decker bus **Bustronome**.

### City Academy

Develop your creative potential with **City Academy's** performing and creative arts classes. Training sessions are offered in offices or at various prestigious venues,

including the Royal Opera House, Sadler's Wells and the Farringdon Studios.

### Cookery School

Learn how to prepare a whole menu with your team while building on your teamwork and collaboration skills. **Cookery School** has designed group cooking events in a relaxed, professionally structured environment.

### EatWith

Step into the world of the culinary platform **EatWith** and have a private dining experience of another kind. Handpicked hosts will take you on a local food tour and show you the most authentic cuisine.

### Foxtrail

Bring your colleagues together and boost team moral in an interactive team adventure with Foxtrail. Groups have to collect clues, crack codes and decipher secret messages.

### Thames RIB Experience

Be adventurous and get your adrenaline pumping with the ultimate water rollercoaster, complete with James Bond music in the background. **Thames RIB Experience** provides waterproof clothing and life jackets too.

### Sherlock – the Game is Now

Immerse yourself in **Sherlock – the Game is Now**, a 100-minute escape room from the show that requires all your senses. Work together in groups to solve puzzles before time runs out.

### Up at The O2

Hit the heights with **Up at The O2** – an exhilarating experience that takes you on a guided expedition over the roof of The O2, London's iconic, dome-shaped, state-of-the-art arena. Get your blood pumping with the spectacular 360-degree view of London.

### Hollywood Bowl

Hire the **Hollywood Bowl** at The O2 for 12 state-of-the-art bowling lanes combined with a Hollywood Diner and Bar – all you need for a fun team outing.



### Hidden gems:

*Bustronome | Up at The O2*

# SECTOR INSIGHTS





Science Museum

## TECH LONDON

The technology scene in London may be centred around Shoreditch and Old Street, where 40,000 tech businesses thrive, but vibrant spaces for tech-related events are dotted all over the city.

London's largest event space, **ExCeL London**, plays host to many tech events. From giant trade shows to global board meetings, there are venues-within-venues in this incredible complex. You can also find a range of hotels in the vicinity, including the **Aloft London Excel**, **Good Hotel London**, **DoubleTree by Hilton Hotel London ExCeL** and London's first superyacht hotel, **Sunborn London**.

**Tobacco Dock** is another large event venue in London. With an advanced tech infrastructure and multiple spaces within a historic set of timber-framed buildings and courtyards, it's a popular venue for the tech sector.

Boasting views of Big Ben, **QEI Centre London** has been a trusted venue for meetings, dinners and conferences for more than 30 years. Its award-winning AV team, QEI Live, offers bespoke technology packages that'll give your conference the professionalism it deserves.

The **IET London: Savoy Place** on Embankment has stunning river views from its roof terrace, complementing its array of modern business facilities.

At the **Science Museum**, you'll have the opportunity to host your event surrounded by technology and science. For increased media exposure and networking opportunities, organise your event during London Tech Week – one of Europe's largest festivals of live tech events. Taking place in June every year, this unique, city-wide tech festival celebrates the capital's booming, diverse and vibrant tech ecosystem.



### Hidden gems:

*Sunborn London | Aloft London ExCeL*

## FINANCE LONDON

**London is widely recognised as a leading global financial centre and was home to the largest ever Sibos conference in 2019.**

The city's 15,495 financial services companies are broadly concentrated in the City of London and Canary Wharf.

**Guildhall** has more than 800 years of history and is now home to the **City of London Corporation**. The Grade I-listed building offers seven spectacular spaces available for hire, including an art gallery and two crypts.

**Andaz London Liverpool Street's** Masonic Temple is one of London's most unique spaces, dating back to 1912. With its marble columns and zodiac ceiling, the space is ideal for themed dinners and intimate gatherings.

For a modern feel, venture to **Searcys at The Gherkin** and enjoy panoramic views of the capital. There are five spaces to choose from located on level 38 – rooms can be booked for small meetings or joined together for larger events.

**The Ned**, which was once a disused bank, is now a spectacular venue with six rooms, two outdoor terraces and eight restaurants serving food from all over the world. Canary Wharf is one of London's great success stories, attracting major players in the world of finance, both from the UK and overseas.

The **Canary Wharf Group** has 37 buildings in its portfolio and is leading the drive towards sustainability – from removing all single-use plastics from its Wharf Kitchen food stalls to creating 4,000 sqm of green roof.

Discover the **Museum of London Docklands**, a hidden gem among the modern metropolis of Canary Wharf. The museum explores London's history as a port, from Roman times to today, and has some incredible spaces for small or large events.

End the day with a cocktail at **Savage Garden**, located in the DoubleTree by Hilton Hotel London – Tower of London. Its two terraces provide 360-degree views of London, plus changing themes depending on the season.



### Hidden gems:

*London Stock Exchange | Mansion House | Landing Forty Two at the Leadenhall Building*



Canary Wharf





### Hidden gems:

LSO St Luke's | RSA House |  
Abbey Road Studios

## CREATIVE LONDON

From film and music, to museums and esports, London is home to a thriving and wide-ranging creative sector. Explore the best venues to host your creative event.

London's creative sector boasts a range of flourishing industries which contribute around £42bn to the city's economy, making it the perfect place for planners working with creative companies.

For corporate events or incentive programmes, London has plenty of venues which can integrate performing arts into event programmes. **The Barbican** is one of the largest performing art venues in the world. Including auditoriums, a theatre, cinemas and a conservatory, the team can assist with speaker sourcing and motivational programme activities, such as backstage tours and meet-the-artist sessions.

**Sadler's Wells** is celebrated for bringing the best of the world's international dance performances to London. From intimate meetings, to large conferences and screenings, the venue's different event spaces can accommodate up to 1,500 people.

For planners looking to take advantage of London's pedestrianised space, **Covent Garden** has a variety of opportunities to host an experiential event.

Experience a rock star service at **Hard Rock Hotel London**. The venue offers fully equipped meeting rooms for a professional environment with an extraordinary twist.

The mega warehouse **Hawker House** in Canada Water has 10 bars and 15 street food traders and will help to feed hungry delegates during your conference. The indoor venue can accommodate up to 3,000 guests.

The **Design Museum** is an architectural icon and offers enough space for drinks receptions, conferences or private events. For inspiring interior design, choose **The Stratford Hotel** and enjoy the elegant atmosphere during your event.



Sadler's Wells

## MEDICAL LONDON

With London's fantastic credentials in the industry, the city is the perfect host for medical, pharmaceutical and life sciences events of any size. Discover some of the best venues for your medical events in London.

London's life sciences ecosystem is what makes the city unique: it is home to four of the top 40 universities in the world, 50 clinical research centres and – together with the Greater South-East – more than 3,900 healthcare businesses, including the top 20 global pharmaceutical companies.

The **Royal College of Physicians** offers a variety of spaces and a unique garden of medicinal plants, in a complex that overlooks leafy Regent's Park in central London. **The Wellcome Collection**, close to Euston and King's Cross stations, has several meeting rooms, an auditorium and its fascinating Medicine Now gallery, which is also available for evening hire.

At **30 Euston Square**, choose between multipurpose meeting rooms, an auditorium and exhibition space or the Heritage Rooms – elegant private dining areas with locally sourced British catering. It's also the headquarters of the **Royal College of General Practitioners**, the renowned professional membership

body that focuses on the highest possible standards in general medical practice.

**BMA House**, the headquarters of the British Medical Association since 1925, has recently been upgraded with high-tech facilities in its impressive location in Bloomsbury. The site is located within London's Knowledge Quarter, a world-leading cluster of life sciences expertise that also includes the **Francis Crick Institute**.

Across central and west London, world-renowned **Imperial College London** has more than 200 event spaces, ranging from small meeting rooms to a Victorian townhouse.



### Hidden gems:

Royal Hospital Chelsea | Royal Society of Medicine



Francis Crick Institute







## URBAN LONDON

Find out how London is driving sustainable transport, regeneration and pollution control to become a smarter city.

Throughout its 2,000-year history, London has evolved to become the global city it is today. But like other major cities, the British capital faces challenges to ensure it works for Londoners and is equipped for the future. Over the last few decades, London has launched several regeneration projects, looking to revitalise some of its neighbourhoods.

**King's Cross** has a unique and rich history and has become a trendy cultural destination with scores of restaurants, bars and shops, thanks to significant investment. The redevelopment of St Pancras International Station, which links London to the continent via Eurostar services, has also improved the area's accessibility since 2007.

**Battersea Power Station** is another successful regeneration story with a thriving community. The Grade II-listed building was closed for several decades until recently, when work started to turn it into a new lifestyle destination featuring shops, restaurants, hotels and flats.

**London's Royal Docks**, around the corner from entertainment venue **The O2**, has been transformed from a disused area into a thriving riverside hub. But despite this wide-scale regeneration, London has also retained much of its history as a water space. The city's markets have contributed to lively communities and continue to be at the centre of local life.



**Old Spitalfields Market** in east London has been active for hundreds of years and is also available for hire, making for a flexible event backdrop with great facilities. Another large creative space is Camden Market, providing modern or historic and atmospheric spaces for meetings and exhibitions. At **Greenwich Peninsula**, where **The O2** is located, new homes and jobs, a design district and a 5km walkway will be created for its upcoming regeneration plan – all surrounded by the river Thames.

**Olympia London** is investing in its 133-year-old venue to create a centre for innovation and creativity, focusing on features for arts, entertainment and events.

Find out more about London's urban developments and add specialist insights to your events with the experts at **New London Architecture** and the **Urban Land Institute**.



**Hidden gems:**  
*Kings Place | The Crystal*





Partner index

London & Partners represents a range of partners across every aspect of event planning from accommodation to transport providers. The partner index is a comprehensive list giving you access to some of the city's most trusted providers and a detailed guide to the city's accommodation and venue capacities.

Exhibition centres

| Centre                 | T         | CA       | CL       | B        | R        | Max sqm    | Max sqf      | Meeting rooms | Closest Tube            |
|------------------------|-----------|----------|----------|----------|----------|------------|--------------|---------------|-------------------------|
| ExCeL London           | 20 -45000 | 20 -3000 | 20 -3000 | 20 -3000 | 0 -10000 | 100000     | 1076390.00   | 60            | Custom House (DLR)      |
| Olympia London         | 4000      | n/a      | n/a      | 3000     | 10000    | 1800-40000 | 19375-430556 | 6             | Kensington Olympia (OV) |
| Business Design Centre | 2500      | 960      | 670      | 900      | 900      | 2088       | 22475.02     | 14            | Angel                   |
| QEII Centre            | 1200      | 497      | 600      | 930      | 1200     | 1375       | 14800.36     | 32            | Westminster             |

Venues

| Venue                                  | T     | CA   | CL   | B    | R     | Max sqm | Max sqf  | Meeting rooms | Closest Tube               |
|--|-------|------|------|------|-------|---------|----------|---------------|----------------------------|
| The O2                                 | 20000 | n/a  | n/a  | 2200 | 3000  | 3402    | 36618.79 | 7             | North Greenwich            |
| Alexandra Palace                       | 7000  | 3500 | 2000 | 5000 | 10250 | 6426    | 69168.82 | 8             | Wood Green                 |
| Southbank Centre                       | 2500  | 100  | 40   | 160  | 250   | 174     | 1872.92  | 11            | Waterloo                   |
| Central Hall Westminster               | 2160  | 400  | 70   | n/a  | 1300  | 734     | 7900.70  | 5             | Westminster                |
| Barbican Centre                        | 1943  | 96   | 100  | 280  | 650   | 736     | 7922.23  | 15            | Moorgate                   |
| Indigo at the O2                       | 1625  | 336  | n/a  | 540  | 1500  | 650     | 6996.54  | 1             | North Greenwich            |
| Tobacco Dock                           | 1500  | 800  | 350  | 1000 | 2500  | 1178    | 12679.87 | 40            | Shadwell (DLR and OV)      |
| Twickenham Stadium                     | 1200  | 500  | 150  | 750  | 1200  | 1178    | 12679.87 | 175           | Twickenham (National Rail) |
| London Stadium                         | 1000  | 228  | 150  | 300  | 460   | 656     | 7061.12  | 22            | Stratford                  |
| The Brewery                            | 1000  | 500  | 390  | 750  | 1200  | 778     | 8374.31  | 8             | Moorgate                   |
| Cadogan Hall                           | 953   | 100  | 100  | 150  | 300   | 263     | 2830.91  | 3             | Sloane Square              |
| Chelsea Football Club- Stamford Bridge | 850   | 550  | 550  | 700  | 1000  | 1400    | 15069.46 | 24+           | Fulham Broadway            |
| Guildhall                              | 760   | 320  | 210  | 704  | 900   | 630     | 6781.26  | 7             | Bank                       |

Venues

| Venue                                   | T   | CA  | CL  | B   | R    | Max sqm | Max sqf  | Meeting rooms | Closest Tube                            |
|---|-----|-----|-----|-----|------|---------|----------|---------------|---|
| De Vere Grand Connaught Rooms           | 800 | 360 | 380 | 550 | 1000 | 477     | 5134.38  | 39            | Holborn                                 |
| etc venues 133 Houndsditch              | 700 | 500 | 400 | 576 | 700  | 3,066   | 33002.12 | 10            | Liverpool St or Bank                    |
| Church House Westminster                | 664 | 208 | 198 | 372 | 550  | 519     | 5586.46  | 19            | St James Park                           |
| East Wintergarden                       | 600 | 400 | 360 | 600 | 1000 | 682     | 7340.98  | 3             | Canary Wharf                            |
| etc Venues - 155 Bishopsgate            | 550 | 350 | 260 | 350 | 900  | 520     | 5597.23  | 5             | Liverpool Street                        |
| IET London: Savoy Place                 | 451 | 200 | 130 | 300 | 330  | 408     | 4391.67  | 21            | Embankment                              |
| CentrEd at Excel                        | 400 | 184 | 145 | 230 | 400  | 362     | 3896.53  | 29            | Custom House                            |
| etc Venues St Paul's                    | 400 | 250 | 190 | 250 | 500  | 288     | 3100.00  | 14            | Barbican                                |
| etc venues County Hall                  | 400 | 252 | 180 | 252 | 800  | 394     | 4240.98  | 18            | Waterloo                                |
| Kings Place                             | 400 | 100 | 72  | 220 | 440  | 286     | 3078.48  | 10+           | King Cross and St Pancras               |
| One Great George Street                 | 400 | 260 | 135 | 250 | 400  | 394.46  | 4245.93  | 21            | Westminster                             |
| Atmosphere Venues Ltd                   | 370 | 200 | 200 | 450 | 600  | 770     | 8288.20  | 4             | Pimlico                                 |
| CCT Venues Bank Street                  | 325 | 160 | 150 | 220 | 300  | 20,14   | 216.78   | 26            | Canary Wharf                            |
| Royal College of Physicians             | 304 | 96  | 80  | 300 | 350  | 287     | 3089.24  | 18            | Regents Park                            |
| Banking Hall                            | 300 | 240 | 240 | 300 | 500  | 378     | 4068.75  | 3             | Bank                                    |
| London's Living Room                    | 300 | 100 | n/a | 100 | 250  | n/a     | n/a      | 11            | London Bridge                           |
| One Whitehall Place (Royal Horseguards) | 300 | 170 | 180 | 228 | 350  | 214     | 2303.47  | 13            | Embankment                              |
| BMA House                               | 294 | 160 | 120 | 200 | 320  | 406     | 4370.14  | 21            | Euston                                  |
| The Crystal                             | 268 | 180 | 88  | 250 | 700  | 1500    | 16145.85 | 14            | Canning Town,Royal Victoria DLR station |
| Sandbox                                 | 200 | 112 | 40  | 140 | 250  | 297     | 3196.88  | 6             | Canary Wharf                            |
| Grace Hall                              | 200 | n/a | n/a | 170 | 600  | 73.5    | n/a      | 4             | Bank                                    |
| Wellcome Collection                     | 154 | 60  | 154 | 60  | 200  | n/a     | n/a      | 7             | Euston                                  |
| CCT Venues Barbican                     | 150 | 90  | 100 | n/a | 150  | 14.86   | 159.95   | 21            | Barbican                                |
| Searcy's at The Gherkin                 | 140 | 70  | n/a | 140 | 260  | 375     | 4036.46  | 4             | Aldgate                                 |
| Trinity House                           | 120 | 96  | 56  | 120 | 120  | 190     | 2045.14  | 5             | Tower Hill                              |
| St Martin-in-the-Fields                 | 120 | 60  | 50  | 110 | 120  | 126     | 1356.25  | 4             | Charing Cross                           |
| Spencer House                           | 110 | 90  | n/a | 90  | 200  | 96      | 1033.33  | 7             | Green Park                              |
| Southwark Cathedral                     | 80  | 56  | 80  | 200 | 400  | 556     | 5984.73  | 7             | London Bridge                           |
| The City Centre and Roman Amphitheatre  | 75  | 40  | 30  | 90  | 400  | 69.2    | 744.86   | 2             | Bank                                    |
| The Tower Room at London and Partners   | 80  | 45  | 36  | 24  | 80   | 86      | 925.70   | 1             | London Bridge                           |

(m - feet conversion 1m = 3.280ft)

T - Theatre CA - Cabaret CL - Classroom B - Banquet R - Reception (NR) - National Rail (OV) - Overground (DLR) - Docklands Light Railway

(m - feet conversion 1m = 3.280ft)

T - Theatre CA - Cabaret CL - Classroom B - Banquet R - Reception (NR) - National Rail (OV) - Overground (DLR) - Docklands Light Railway



Venues

| Venue                     | T    | CA  | CL  | B   | R    | Max sqm | Max sqf | Meeting rooms | Closest Tube                  |
|---------------------------|------|-----|-----|---|------|---------|---------|---------------|-------------------------------|
| Handel & Hendrix          | n/a  | n/a | n/a | n/a   | 70   | n/a     | n/a     | 3             | Bond Street                   |
| Lancaster House           | n/a  | n/a | n/a | 150   | 700  | n/a     | n/a     | 5             | Green Park                    |
| Hollywood Bowl            | n/a  | n/a | n/a | n/a   | 700  | n/a     | n/a     | 1             | North Greenwich               |
| Westfield Stratford       | n/a  | n/a | n/a | Experiential - car launches, large promotional events |      |         | n/a     | n/a           | Stratford                     |
| Westfield White City      | n/a  | n/a | n/a |   |      |         | n/a     | n/a           | Shepherds Bush                |
| Lime Venue Portfolio:     |      |     |     |   |      |         | n/a     |               |                               |
| The Troxy                 | 2000 | 520 | n/a | 630   | 1500 | n/a     | n/a     | 2             | Limehouse ( DLR)              |
| Tottenham Hotspur Stadium | 1200 | n/a | n/a | 500   | 2000 | n/a     | n/a     | 9             | White Hart Lane (Overground)  |
| Epsom Downs Racecourse    | 800  | 328 | n/a | 700   | 1000 | n/a     | n/a     | 14            | Tattenham Corner (Overground) |
| Sandown Park Racecourse   | 800  | 504 | n/a | 550   | 1500 | n/a     | n/a     | 10            | Esher (Overground)            |
| The Kia Oval              | 650  | 360 | n/a | 700   | 1500 | n/a     | n/a     | 14            | Oval                          |
| Natural History Museum    | 550  | 700 | n/a | 650   | 1200 | n/a     | n/a     | 7             | South Kensington              |
| Kempton Park Racecourse   | 500  | 360 | n/a | 650   | 750  | n/a     | n/a     | 10            | Kempton Park (Overground)     |
| Harlequins FC             | 300  | 120 | n/a | 500   | 910  | n/a     | n/a     | 12            | Twickenham (Overground)       |
| Kidzania                  | 250  | n/a | n/a | 250   | 1000 | n/a     | n/a     | 5             | Shepherd's Bush               |
| SSE Wembley Arena         | 200  | n/a | n/a | 160   | 300  | n/a     | n/a     | 4             | Wembley                       |
| Old Billingsgate          | n/a  | n/a | n/a | 1200  | 2000 | n/a     | n/a     | 5             | London Bridge                 |
| Roux at Parliament Square | 180  | 54  | n/a | 108   | 250  | n/a     | n/a     | 12            | Westminster                   |

Attraction venues

| Venue                              | T    | CA  | CL  | B   | R    | Max sqm | Max sqf  | Rooms for hire | Closest Tube           |
|------------------------------------|------|-----|-----|-----|------|---------|----------|----------------|------------------------|
| National Maritime Museum Greenwich | 1000 | n/a | n/a | 500 | 1000 | 1092    | 0.00     | 2              | Cutty Sark (DLR)       |
| Banqueting House                   | 400  | 240 | n/a | 380 | 500  | 1844    | 19848.63 | 2              | Westminster            |
| Museum of London                   | 400  | 350 | 60  | 300 | 1000 | 404     | 4348.62  | 15             | St Pauls               |
| Science Museum                     | 400  | 42  | n/a | 400 | 1000 | on app  | n/a      | 12             | South Kensington       |
| National Gallery                   | 328  | 310 | n/a | 310 | 1200 | 345     | 3713.55  | 18             | Charing Cross          |
| British Museum                     | 323  | 40  | 45  | 130 | 329  | 340     | 3659.73  | 8              | Holborn/Russell Square |
| Saatchi Gallery                    | 320  | 150 | 100 | 200 | 300  | 205     | 2206.60  | 14             | Sloane Square          |
| ZSL London Zoo                     | 300  | 240 | N/A | 260 | 350  | 423     | 4553.13  | 12             | Camden Town            |
| British Library Conference Centre  | 255  | 30  | 24  | 80  | 200  | n/a     | n/a      | 6              | Kings Cross/St Pancras |

(m - feet conversion 1m = 3.280ft)  
T - Theatre CA - Cabaret CL - Classroom B - Banquet R - Reception (NR) - National Rail (OV) - Overground (DLR) - Docklands Light Railway

Attraction venues

| Venue  | T   | CA  | CL  | B    | R                           | Max sqm                       | Max sqf  | Rooms for hire | Closest Tube                  |
|--|-----|-----|-----|------|-----------------------------|-------------------------------|----------|----------------|-------------------------------|
| Royal Air Force Museum                                       | 250 | 120 | 50  | 600  | 1000                        | 1073                          | 11549.66 | 14             | Collindale                    |
| Hampton Court Palace   | 200 | 120 | 60  | 1500 | 3000                        | 384                           | 4133.34  | 12             | Hampton Court (National Rail) |
| London Transport Museum                                      | 200 | 100 | n/a | 180  | 500                         | 72                            | 775.00   | 3              | Covent Garden                 |
| Tate Modern  | 250 | 200 | n/a | 800  | 1500                        | 264                           | n/a      | 16             | Southwark                     |
| Royal Botanic Gardens, Kew                                   | 230 | 160 | 150 | 230  | 400                         | 388                           | 4176.39  | 7              | Kew Gardens                   |
| English Heritage - Eltham Palace                             | 210 | 126 | n/a | 200  | 300                         | n/a                           | n/a      | 3              | Mottingham (National Rail)    |
| Natural History Museum                                       | 209 | 360 | 360 | 700  | 1500                        | n/a                           | n/a      | 5              | South Kensington              |
| Design Museum  | 202 | n/a | 202 | 200  | 450                         | 319                           | 3433.68  | 5              | High Street Kensington        |
| Imperial War Museum London                                   | 200 | 50  | 40  | 320  | 1000                        | 347                           | 3735.07  | 7              | Lambeth North                 |
| Old Royal Naval College Greenwich                            | 200 | 100 | 100 | 398  | 398                         | 686                           | 7384.04  | 7              | Cutty Sark (DLR)              |
| Tate Britain   | 190 | 60  | 40  | 500  | 900                         | n/a                           | n/a      | 8              | Pimlico                       |
| London Canal Museum  | 160 | 80  | 40  | 120  | 200                         | N/A                           | n/a      | 3              | Kings Cross and St Pancras    |
| HM Tower of London   | 150 | 100 | 80  | 240  | 300                         | 384                           | 4133.34  | 12             | Tower Hill                    |
| Houses of Parliament   | 150 | n/a | n/a | 170  | 450 Saturday, otherwise 200 | 932 - Saturday, otherwise 181 | n/a      | 13             | Westminster                   |
| Shakespeare's Globe  | 150 | 50  | n/a | 350  | 450                         | 400                           | 4305.56  | 4              | Southwark                     |
| V&A Museum of Childhood                                      | 150 | 50  | 30  | 300  | 900                         | 800                           | 8611.12  | 5              | Bethnal Green                 |
| Museum of London Docklands                                   | 146 | 80  | n/a | 200  | 800                         | 2600                          | 27986.14 | 7              | Canary Wharf                  |
| National Portrait Gallery                                    | 138 | 60  | 60  | 230  | 400                         | n/a                           | n/a      | 9              | Charing Cross                 |
| Peter Harrison Planetarium                                   | 130 | 60  | n/a | 60   | 130                         | n/a                           | n/a      | 2              | Cutty Sark (DLR)              |
| Warner Bros. Studio Tour London – The Making of Harry Potter | 125 | n/a | n/a | 520  | 600                         | 2100                          | 22604.19 | 3              | Watford North (National Rail) |
| Churchill War Rooms  | 120 | 70  | 54  | 120  | 350                         | 131                           | 1410.07  | 5              | Westminster                   |
| Queen's House Greenwich                                      | 120 | 60  | 50  | 120  | 150                         | 141                           | 1517.71  | 1              | Cutty Sark (DLR)              |
| HMS Belfast  | 110 | 70  | n/a | 144  | 400                         | 228                           | 2454.17  | 6              | London Bridge                 |
| Somerset House   | 100 | 36  | n/a | 550  | 1500                        | 500                           | 5381.95  | 10+            | Temple                        |
| English Heritage - Kenwood House                             | 80  | n/a | n/a | 80   | 100                         | n/a                           | n/a      | 1              | Archway                       |
| English Heritage - Rangers House                             | 60  | 30  | n/a | 60   | 80                          | n/a                           | n/a      | 1              | Blackheath (National Rail)    |
| Royal Observatory Greenwich                                  | 60  | 30  | 24  | 60   | 120                         | 112                           | 1205.56  | 2              | Cutty Sark (DLR)              |
| The Geffrye Museum   | 50  | n/a | 48  | 70   | 250                         | n/a                           | n/a      | 3              | Hoxton (OV)                   |
| The Household Cavalry Museum                                 | 40  | 20  | N/A | 40   | 100                         | 170                           | 1829.86  | 2              | Charing Cross                 |

(m - feet conversion 1m = 3.280ft)  
T - Theatre CA - Cabaret CL - Classroom B - Banquet R - Reception (NR) - National Rail (OV) - Overground (DLR) - Docklands Light Railway



Attraction venues

| Venue                            | T                     | CA                     | CL  | B   | R                       | Max sqm        | Max sqf  | Rooms for hire | Closest Tube           |
|----------------------------------|-----------------------|------------------------|-----|-----|-------------------------|----------------|----------|----------------|------------------------|
| English Heritage-Wellington Arch | 45                    | 22                     | n/a | 36  | 60                      | n/a            | n/a      | 1              | Hyde Park Corner       |
| Cutty Sark Greenwich             | n/a                   | n/a                    | n/a | 270 | 450                     | n/a            | n/a      | 1              | Cutty Sark (DLR)       |
| Kensington Palace                | n/a                   | n/a                    | n/a | 170 | 300                     | 221            | 2378.82  | 3              | High Street Kensington |
| Kew Palace and Royal Kitchens    | n/a                   | n/a                    | n/a | 30  | 40                      | 52             | 559.72   | 2              | Kew Bridge             |
| National Army Museum             | n/a                   | n/a                    | n/a | 350 | 700                     | 602            | 6479.87  | 7              | Sloane Square          |
| Postal Museum                    | n/a                   | n/a                    | n/a | 150 | 275                     | 236            | 2540.28  | 2              | Farringdon             |
| Royal Academy of Arts            | n/a                   | n/a                    | n/a | 250 | 800                     | 1920           | 20666.69 | n/a            | Piccadilly Circus      |
| Victoria and Albert Museum       | n/a                   | 300                    | n/a | 400 | 600                     | 629            | 6770.49  | 10             | South Kensington       |
| Westminster Abbey                | 400-summer season, 50 | 240 -summer season, 80 | 32  | 280 | 1000-summer season, 400 | College garden | n/a      | 6              | Westminster            |

Academic venues

| Venue  | T   | CA  | CL  | B   | R   | Max sqm | Max sqf | Rooms for hire | Closest Tube     |
|--|-----|-----|-----|-----|-----|---------|---------|----------------|------------------|
| London School of Economics and Political Science (LSE) | 999 | n/a | 120 | n/a | 80  | 572     | 6156.95 | Various        | Holborn          |
| Imperial College London                                | 740 | 168 | 90  | 350 | 600 | 572     | 6156.95 | Various        | South Kensington |

Please note, these venues are primarily used for teaching in termtime and therefore venue hire is subject to availability

Riverboats

| Boats  | Seated   | Reception | Seated dinner | Location            |
|--|----------|-----------|---------------|---------------------|
| Thames River Services and Circular Cruises Westminster | 524      | 500       | 250           | Optional            |
| Silver Sturgeon  | 440      | 550       | 440           | Central London      |
| MBNA Thames Clippers                                   | 220      | 220       | 220           | Optional            |
| City Cruises   | 200      | 595       | 200           | Optional            |
| Silver Barracuda                                       | 140      | 230       | 140           | Central London      |
| RS Hispaniola  | 120      | 180       | 120           | Victoria Embankment |
| Bateaux London – River Room                            | 100- 200 | 100-220   | Up to 200     | Embankment          |
| Bateaux London – Glass Room                            | 200      | 300+      | Up to 200     | Embankment          |

Venue hire mainly available in the evenings, daytime hire is subject to availability as these are public attractions

(m - feet conversion 1m = 3.280ft)

T - Theatre CA - Cabaret CL - Classroom B - Banquet R - Reception (NR) - National Rail (OV) - Overground (DLR) - Docklands Light Railway

Hotels with meeting spaces

| Hotel   | Star rating          | T    | CA   | CL   | B    | R    | Max sqm | Max sqf  | Meeting rooms | Bed rooms | Closest Tube               |
|---|----------------------|------|------|------|------|------|---------|----------|---------------|-----------|----------------------------|
| InterContinental London – The O2                | not officially rated | 3000 | 1680 | 1700 | 2520 | 3000 | 3013    | 32431.63 | 20            | 453       | North Greenwich            |
| Hilton London Metropole                         | 4*                   | 1200 | 600  | 650  | 1000 | 1500 | 1062    | 1062.00  | 42            | 1059      | Edgware Road               |
| Park Plaza Westminster Bridge                   | 4*                   | 1400 | 720  | 700  | 1200 | 1500 | 1167    | 12561.47 | 31            | 1019      | Lambeth North              |
| Grosvenor House, A JW Marriott Hotel            | 5*                   | 1300 | 1000 | 700  | 2000 | 2000 | 3147    | 33873.99 | 31            | 420       | Marble Arch                |
| Royal Lancaster London                          | 5*                   | 1200 | 640  | 552  | 1200 | 1680 | 1008    | 10850.01 | 15            | 411       | Lancaster Gate             |
| London Hilton on Park Lane                      | 5*                   | 1000 | 600  | 550  | 900  | 1250 | 840     | 9041.68  | 13            | 453       | Hyde Park Corner           |
| Novotel London West                             | 4*                   | 1000 | 520  | 540  | 1200 | 2000 | 1726    | 18578.49 | 33            | 630       | Hammersmith                |
| London Marriott Hotel Grosvenor Square          | 5*                   | 900  | 432  | 500  | 648  | 1000 | 763     | 8212.86  | 14            | 217       | Bond Street                |
| The Londoner                                    | 5*                   | 864  | 464  | 258  | n/a  | 800  | 614     | 6609.03  | 8             | 350       | Leicester Square           |
| Hilton London Wembley                           | 4*                   | 700  | 500  | 450  | 600  | 800  | 693     | 7459.38  | 14            | 361       | Wembley Park               |
| InterContinental London Park Lane               | 5*                   | 700  | 300  | 252  | 750  | 1000 | 841     | 9052.44  | 13            | 454       | Hyde Park Corner           |
| Park Plaza Riverbank London                     | 4*                   | 650  | 432  | 450  | 540  | 660  | 639     | 6878.13  | 23            | 489       | Vauxhall                   |
| Hilton London Bankside                          | 5*                   | 600  | 320  | 306  | 600  | 700  | 556     | 5984.73  | 11            | 292       | Southwark                  |
| The Tower                                       | 4*                   | 600  | 320  | 350  | 400  | 550  | 551     | 5930.91  | 19            | 801       | Tower Hill                 |
| The Landmark London                             | 5*                   | 568  | 264  | 364  | 432  | 750  | 583     | 6275.35  | 13            | 300       | Marylebone                 |
| Park Plaza Victoria London                      | 4*                   | 550  | 280  | 260  | 400  | 750  | 602     | 6479.87  | 15            | 299       | Victoria                   |
| The Biltmore, Mayfair                           | 5*                   | 500  | 210  | 250  | 320  | 700  | 484     | 5209.73  | 12            | 307       | Bond Street                |
| Millennium Gloucester Hotel & Conference Centre | 4*                   | 500  | 288  | 300  | 480  | 650  | 420     | 4520.84  | 12            | 610       | Gloucester Road            |
| Sheraton Grand London Park Lane                 | 5*                   | 500  | 240  | 250  | 590  | 1200 | 498     | 5360.42  | 5             | 302       | Green Park                 |
| Rosewood London                                 | 5*                   | 430  | 200  | 285  | 340  | 555  | 457     | 4919.10  | 12            | 306       | Holborn                    |
| Amba Hotel Marble Arch                          | 4*                   | 400  | 240  | 220  | 350  | 500  | 313     | 3369.10  | 13            | 692       | Marble Arch                |
| Hilton London Syon Park                         | 4*                   | 400  | 256  | 300  | 384  | 500  | 439     | 4725.35  | 15            | 137       | Syon Lane                  |
| Hilton London Tower Bridge                      | 4*                   | 400  | 150  | 220  | 300  | 450  | 334     | 3595.14  | 10            | 246       | London Bridge              |
| Hilton London Canary Wharf                      | 4*                   | 380  | 192  | 220  | 270  | 400  | 337     | 3627.43  | 8             | 282       | Canary Wharf               |
| Kimpton Fitzroy London                          | 5*                   | 377  | 161  | 160  | 260  | 450  | 360     | 3875.00  | 9             | 334       | Russell Square             |
| St Pancras Renaissance London Hotel             | 5*                   | 375  | 240  | 220  | 280  | 575  | 453     | 4876.05  | 10            | 245       | Kings Cross and St Pancras |
| Hilton London Paddington                        | 4*                   | 350  | 150  | 160  | 280  | 400  | 282.11  | 3036.60  | 18            | 419       | Paddington Station         |
| The Waldorf Hilton                              | 4*                   | 350  | 240  | 260  | 400  | 500  | 491     | 5285.07  | 9             | 298       | Covent Garden              |

(m - feet conversion 1m = 3.280ft)

T - Theatre CA - Cabaret CL - Classroom B - Banquet R - Reception (NR) - National Rail (OV) - Overground (DLR) - Docklands Light Railway



Hotels with meeting spaces

| Hotel  | Star rating | T   | CA  | CL  | B   | R   | Max sqm | Max sqf | Meeting rooms | Bed rooms | Closest Tube           |
|--|-------------|-----|-----|-----|-----|-----|---------|---------|---------------|-----------|------------------------|
| Copthorne Tara Hotel London Kensington             | 4*          | 320 | 120 | 120 | 332 | 500 | 410     | 4413.20 | 7             | 833       | High Street Kensington |
| The Bloomsbury Hotel                               | 4*          | 320 | 160 | 160 | 260 | 280 | 266     | 2863.20 | 13            | 153       | Tottenham Court Road   |
| Radisson Blu Edwardian, Bloomsbury Street          | 4*          | 300 | 120 | 130 | 230 | 300 | 232     | 2497.22 | 9             | 174       | Tottenham Court Road   |
| The Royal Horseguards                              | 5*          | 300 | 170 | 180 | 228 | 350 | 305     | 3282.99 | 13            | 281       | Embankment             |
| London Marriott Hotel Regent's Park                | 4*          | 300 | 182 | 150 | 300 | 300 | 311     | 3347.57 | 10            | 308       | Swiss Cottage          |
| London Marriott Hotel Canary Wharf                 | 5*          | 290 | 102 | 132 | 180 | 290 | 230     | 2475.70 | 19            | 302       | Canary Wharf           |
| The Langham London                                 | 5*          | 275 | 136 | 154 | 250 | 375 | 364     | 3918.06 | 16            | 380       | Oxford Circus          |
| Claridge's   | 5*          | 260 | 120 | 150 | 240 | 500 | 234     | 2518.75 | 7             | 203       | Bond Street            |
| The May Fair Hotel                                 | 5*          | 260 | 120 | 140 | 220 | 370 | 336     | 3616.67 | 17            | 437       | Green Park             |
| Hilton London Olympia                              | 4*          | 250 | 150 | 150 | 280 | 350 | 491     | 5285.07 | 10            | 405       | Olympia London (OV)    |
| Hyatt Regency London-The Churchill                 | 5*          | 250 | 144 | 180 | 240 | 350 | 242     | 2604.86 | 10            | 453       | Marble Arch            |
| Mandarin Oriental Hyde Park                        | 5*          | 250 | 80  | 120 | 250 | 400 | 244     | 2626.39 | 5             | 194       | Knightsbridge          |
| Radisson Blu Edwardian, New Providence Wharf       | 4*          | 250 | 150 | 150 | 200 | 250 | 210     | 2260.42 | 8             | 169       | Canary Wharf           |
| The Berkeley                                       | 5*          | 250 | 112 | 100 | 200 | 450 | 252     | 2712.50 | 6             | 210       | Hyde Park Corner       |
| Le Meridien Piccadilly                             | 5*          | 230 | 180 | 140 | 240 | 245 | 300     | 3229.17 | 7             | 280       | Piccadilly Circus      |
| DoubleTree by Hilton Hotel London- Tower of London | 4*          | 220 | 120 | 84  | 150 | 250 | 198     | 2131.25 | 23            | 583       | Tower Hill             |
| ibis STYLES London Excel                           | 3*          | 218 | 118 | 118 | 136 | 150 | 203     | 2185.07 | 4             | 305       | Custom house (DLR)     |
| DoubleTree by Hilton Hotel London- WestEnd         | 4*          | 200 | 80  | 80  | 150 | 220 | 285     | 3067.71 | 17            | 215       | Holborn                |
| Hilton London Kensington                           | 4*          | 200 | n/a | 120 | 300 | 400 | 528     | 5683.34 | 14            | 601       | Shepherd's Bush        |
| ME London  | 5*          | 200 | 170 | 130 | 120 | 300 | 157     | 1689.93 | 7             | 157       | Temple                 |
| St Giles Bloomsbury                                | 4*          | 200 | 90  | 72  | n/a | n/a | 175     | 1883.68 | 6             | 730       | Tottenham Court Road   |
| The Bankside Hotel                                 | 5*          | 200 | 80  | 90  | 120 | 180 | 196     | 2109.72 | 4             | 161       | Soutwark               |
| The Ned  | 5*          | 200 | 77  | 80  | 120 | 200 | 165     | 1775    | 9             | 250       | Bank                   |
| DoubleTree by Hilton Hotel London- Westminster     | 4*          | 180 | 96  | 70  | 130 | 200 | 198     | 2131.25 | 11            | 460       | Westminster            |
| Strand Palace Hotel                                | 4*          | 180 | 60  | 90  | 140 | 200 | 175     | 1883.68 | 10            | 785       | Covent Garden          |
| Sea Containers Hotel                               | 4*          | 180 | 90  | 108 | 176 | 200 | 307     | 3305    | 16            | 359       | Blackfriars            |
| Amba Hotel Charing Cross                           | 4*          | 170 | 100 | 130 | 130 | 200 | 174     | 1872.92 | 9             | 239       | Charing Cross          |

(m - feet conversion 1m = 3.280ft)

T - Theatre CA - Cabaret CL - Classroom B - Banquet R - Reception (NR) - National Rail (OV) - Overground (DLR) - Docklands Light Railway

Hotels with meeting spaces

| Hotel                                       | Star rating | T   | CA  | CL  | B   | R   | Max sqm | Max sqf | Meeting rooms | Bed rooms | Closest Tube           |
|---|-------------|-----|-----|-----|-----|-----|---------|---------|---------------|-----------|------------------------|
| London Marriott Hotel Marble Arch           | 4*          | 170 | 72  | 100 | 130 | 200 | 171     | 1840.63 | 7             | 240       | Marble Arch            |
| DoubleTree by Hilton Hotel London- Victoria | 4*          | 160 | 100 | 100 | 120 | 200 | 216     | 2325.00 | 8             | 225       | Victoria               |
| Melia White House                           | 4*          | 150 | 77  | 100 | 110 | 200 | 149     | 1603.82 | 9             | 693       | Regents Park           |
| Thistle City Barbican                       | 4*          | 120 | 64  | 50  | 120 | 120 | 238     | 2561.81 | 13            | 463       | Old Street             |
| Conrad London St James                      | 5*          | 120 | n/a | 60  | 220 | 300 | 270     | 2906.25 | 7             | 256       | St James Park          |
| The Connaught                               | 5*          | 120 | 60  | 70  | 120 | 200 | 151     | 1625.35 | 7             | 121       | Bond Street            |
| The Grosvenor                               | 4*          | 120 | 72  | 70  | 100 | 150 | 88      | 947.22  | 9             | 345       | Victoria               |
| Shangri-La Hotel At The Shard London        | 5*          | 120 | 64  | 50  | 100 | 140 | 155     | 1668.40 | 3             | 202       | London Bridge          |
| St Giles Heathrow                           | 4*          | 120 | 90  | 60  | 100 | 150 | 120     | 1291.67 | 4             | 411       | Hatton Cross           |
| Hilton London Green Park                    | 4*          | 110 | n/a | 60  | n/a | 110 | 117.2   | 1261.53 | 4             | 163       | Green Park             |
| Radisson Blu Edwardian, Grafton             | 4*          | 110 | 64  | 50  | 100 | 150 | 120     | 1291.67 | 11            | 330       | Warren Street          |
| Radisson Blu Edwardian, Kenilworth          | 4*          | 110 | 64  | 48  | 90  | 120 | 137.3   | 1477.88 | 6             | 186       | Tottenham Court Road   |
| Sunborn London                              | 4*          | 110 | 70  | 70  | 200 | 250 | 170     | 1829.86 | 6             | 131       | Custom House (DLR)     |
| Radisson Blu Edwardian, Hampshire           | 4*          | 100 | 50  | 48  | 72  | 120 | 108     | 1162.50 | 6             | 127       | Leicester Square       |
| Radisson Blu Edwardian, Vanderbilt          | 4*          | 100 | 64  | 50  | 100 | 140 | 96.6    | 1039.79 | 12            | 215       | Gloucester Road        |
| Thistle Euston                              | 4*          | 100 | 54  | 45  | 60  | 80  | 80      | 861.11  | 6             | 362       | Euston                 |
| Nobu Shoreditch                             | 5*          | 100 | 80  | 60  | 120 | 120 | 178     | 1915.97 | 1             | 148       | Old Street             |
| London Marriott Hotel County Hall           | 5*          | 80  | 40  | 40  | 60  | 90  | 262     | 2820.14 | 12            | 200       | Westminster            |
| The Park Tower Knightsbridge                | 5*          | 80  | 30  | 50  | 120 | 150 | 167     | 1797.57 | 5             | 280       | Knightsbridge          |
| Thistle Holborn, The Kingsley               | 4*          | 80  | 40  | 40  | 60  | 100 | 87      | 936.46  | 7             | 129       | Holborn                |
| The Athenaeum                               | 5*          | 80  | 35  | 25  | 60  | 80  | 8.09    | 87.08   | 3             | 168       | Green Park             |
| H10 London Waterloo                         | 4*          | 80  | 35  | 40  | 120 | 240 | 269     | 2895.49 | 4             | 177       | Waterloo               |
| Cliveden House & Spa                        | 5*          | 80  | 24  | n/a | 60  | 260 | n/a     | 270.00  | 6             | 45        | Taplow (National Rail) |
| The Good Hotel                              | 4*          | 70  | n/a | 22  | 30  | 120 | 65      | 235.00  | 4             | 148       | Royal Victoria         |
| The Stratford Hotel London                  | not rated   | 70  | 40  | 49  | 24  | 45  | 65      | 699.65  | 4             | 145       | Stratford station, DLR |
| Dorsett London City                         | 4*          | 60  | 30  | 40  | 30  | 70  | 52      | 559.72  | 4             | 267       | Aldgate                |
| The Marylebone Hotel                        | 4*          | 60  | 36  | 44  | 48  | 80  | 101     | 1087.15 | 6             | 257       | Baker Street           |
| Radisson Blu Edwardian, Mercer Street       | 4*          | 60  | 32  | 27  | 40  | 60  | 63      | 678.13  | 6             | 137       | Covent Garden          |

(m - feet conversion 1m = 3.280ft)

T - Theatre CA - Cabaret CL - Classroom B - Banquet R - Reception (NR) - National Rail (OV) - Overground (DLR) - Docklands Light Railway



Hotels with meeting spaces

| Hotel                                    | Star rating | T                           | CA  | CL  | B   | R   | Max sqm | Max sqf | Meeting rooms | Bed rooms | Closest Tube        |
|--|-------------|-----------------------------|-----|-----|-----|-----|---------|---------|---------------|-----------|---------------------|
| W London- Leicester Square               | 5*          | 56                          | 35  | 35  | 50  | 80  | 40      | 430.56  | 3             | 192       | Leicester Square    |
| The Goring                               | 5*          | 55                          | 20  | n/a | 40  | 100 | 70      | 753.47  | 4             | 69        | Victoria            |
| One Aldwych                              | 4*          | 50                          | 28  | n/a | 50  | 80  | 100     | 1076.39 | 4             | 105       | Covent Garden       |
| nhow London                              | 4*          | 50                          | 40  | 30  | 30  | 50  | 84      | 904     | 3             | 190       | Old Street or Angel |
| Thistle Kensington Gardens               | 4*          | 45                          | 24  | 30  | 40  | 150 | 52      | 559.72  | 3             | 175       | Queensway           |
| The Stafford London                      | 5*          | 40                          | 18  | 24  | 44  | 75  | 61      | 656.60  | 5             | 105       | Green Park          |
| The Trafalgar                            | 5*          | 40                          | 22  | n/a | n/a | 50  | 45      | 484.38  | 3             | 129       | Charing Cross       |
| Aloft London Excel                       | 4*          | 30                          | 12  | n/a | n/a | 40  | 47      | 505.90  | 6             | 252       | Prince Regent (DLR) |
| DoubleTree by Hilton Hotel London- Excel | 4*          | 30                          | 16  | 16  | 20  | 40  | 55.7    | 599.55  | 2             | 287       | Prince Regent (DLR) |
| Hilton London Hyde Park                  | 4*          | 30                          | n/a | 14  | n/a | n/a | 45      | 484.38  | 1             | 136       | Queensway           |
| Thistle Bloomsbury Park                  | 4*          | 30                          | 10  | 20  | 30  | 70  | 10.13   | 109.04  | 1             | 95        | Russell Square      |
| Hilton London Angel Islington            | 4*          | n/a                         | n/a | n/a | 82  | 140 | n/a     | n/a     | 1             | 188       | Angel               |
| No. 11 Cadogan Gardens                   | 5*          | n/a                         | n/a | n/a | 60  | 60  | n/a     | m/a     | 7             | 56        | Sloane Square       |
| Radisson Blu Edwardian, Sussex           | 4*          | n/a                         | n/a | n/a | 12  | n/a | 15      | 161.46  | 2             | 101       | Marble Arch         |
| Hard Rock Hotel                          | not rated   | Refurbishment plan for 2020 |     |     |     |     |         |         |               | 900       |                     |

Accommodation only

| Property   | Star rating  | Total bedrooms, suites or apartments | Closest Tube           |
|--|--------------|--------------------------------------|------------------------|
| Corus Hotel Hyde Park                                  | 4*           | 387                                  | Lancaster Gate         |
| Imperial College London: Summer Accommodation          | n/a - budget | 2000                                 | Across West London     |
| LSE Bankside House (Summer Only)                       | n/a - budget | 617                                  | Southwark              |
| LSE High Holborn Residence (Summer Only)               | n/a - budget | 447                                  | Holborn                |
| DoubleTree by Hilton Hotel London- Docklands Riverside | 4*           | 378                                  | Canada Water           |
| LSE Northumberland House (Summer Only)                 | n/a - budget | 340                                  | Charing Cross          |
| LSE Rosebery Hall (Summer Only)                        | n/a - budget | 339                                  | Angel                  |
| DoubleTree by Hilton Hotel London- Excel               | 4*           | 260                                  | Prince Regent          |
| LSE Grosvenor House (Summer Only)                      | n/a - budget | 227                                  | Covent Garden          |
| LSE Passfield Hall (Summer Only)                       | n/a - budget | 226                                  | Euston Square          |
| The Bailey's London                                    | 5*           | 210                                  | Gloucester Road        |
| Qbic Hotel City  | 4*           | 184                                  | Aldgate East           |
| LSE Carr-Saunders Hall (Summer Only)                   | n/a          | 160                                  | Goodge Street          |
| Cheval Three Quays                                     | n/a          | 159                                  | Tower Hill             |
| Radisson Blu Edwardian, Berkshire                      | 4*           | 149                                  | Bond Street            |
| The Westbridge Hotel                                   | n/a          | 80                                   | Stratford              |
| Cheval Harrington Court                                | n/a          | 47                                   | South Kensington       |
| Cheval Hyde Park                                       | n/a          | 16                                   | High Street Kensington |

Homestay

| Property                            | Total bedrooms, suites or apartments | Closest Tube |
|-------------------------------------|--------------------------------------|--------------|
| airbnb                              | Various                              | Various      |
| Coach House London Vacation Rentals | 38 properties with over 86 bedrooms  | Various      |
| Merino Hospitality                  | 9 apartments, various sizes          | Various      |

(m - feet conversion 1m = 3.280ft)  
T - Theatre CA - Cabaret CL - Classroom B - Banquet R - Reception (NR) - National Rail (OV) - Overground (DLR) - Docklands Light Railway



Airport hotels

| Hotel   | Star rating | T    | CA  | CL  | B   | R    | Max sqm | Meeting rooms | Bed rooms | Closest Tube          |
|---|-------------|------|-----|-----|-----|------|---------|---------------|-----------|-----------------------|
| Hilton London Heathrow Airport Terminal 5           | 4*          | 1200 | 480 | 430 | 816 | 1200 | 840     | 14            | 350       | Heathrow Terminal 5   |
| Radisson Blu Edwardian, Heathrow                    | 4*          | 700  | 400 | 350 | 550 | 700  | 502     | 32            | 459       | Heathrow Terminal 123 |
| Park Inn Heathrow                                   | 4*          | 700  | 384 | 250 | 600 | 800  | 685     | 41            | 895       | Hatton Cross          |
| Hilton London Heathrow Airport Terminal 4           | 4*          | 250  | 115 | 150 | 170 | 300  | 201.78  | 30            | 398       | Heathrow Terminal 4   |
| DoubleTree by Hilton Hotel London- Heathrow Airport | 4*          | 70   | 50  | 30  | 50  | 70   | n/a     | 6             | 200       | Heathrow Terminal 123 |

Professional Conference Organisers (PCOs)

Professional Conference Organisers (PCOs) collaborate with national and international Associations to help them deliver their conferences successfully. They provide end to end planning and logistics especially financial management and delegate and sponsorship acquisition.

| Company                             |
|-------------------------------------|
| B Network                           |
| Congress Bookers (IAPCO members)    |
| Congrex Switzerland (IAPCO members) |
| MCI Group UK Ltd. (IAPCO members)   |
| TFI Group (IAPCO members)           |
| BCD Meetings & Events               |

Event Management Companies (EMCs)

Specialise in the creation and delivery of all aspects of your event, including strategic marketing, budgeting, logistics, and branding.

| Company                     | Description  |
|-----------------------------|--|
| BCD Meetings and Incentives | full-service meetings management and event planning capabilities |
| Sapphire Private            | Exclusive multi service event management agency                  |
| Worldspan                   | Global event management and creative communications              |

Destination Management Companies (DMCs)

Specialise in the delivery of events, tours, staffing and transport, utilising extensive local knowledge, expertise and resources.

| Company                                   | Description   |
|---|---|
| 2B-UK                                     | North America and Australia Market specialist                               |
| AC Luxe                                   | Destination management for UK, Ireland, Paris & Amsterdam                   |
| AC Travel Group                           | Scandinavian/Nordic market specialists                                      |
| All In One Tours Ltd                      | Specialise in german groups   |
| Atlas Travel Solutions                    | All markets   |
| Ben Thompson Events Ltd                   | Sporting corporate hospitality  |
| Brook Green UK DMC                        | Belgian and Dutch speciality  |
| China Holidays Ltd                        | Chinese specialist inbound groups   |
| E-Voyages                                 | Specialise in French groups   |
| Kuoni Travel Ltd - Destination Management | Offices in other parts of the world so can help with anything               |
| Liberty International GB Ltd              | Italian speciality, but also have offices in Europe, Brazil and Middle East |
| London DMC (TCEGroup)                     | European & US, UK clients   |
| Pacific World DMC                         | Global DMC with fresh ideas   |
| Principal. London DMC                     | Corporate EU, North American and Asian market                               |
| Sapphire Private                          | Global DMC  |
| Smoozy                                    | European business   |
| Spectra                                   | 90% North American business   |
| Wedgewood Britain                         | Offices all over the world, Europe, Africa, Brazil                          |
| Word on the Street                        | All international markets   |

(m - feet conversion 1m = 3.280ft)  
T - Theatre CA - Cabaret CL - Classroom B - Banquet R - Reception (NR) - National Rail (OV) - Overground (DLR) - Docklands Light Railway



Delegate Management registration

| Company     | Description  |
|-------------|--|
| Grass Roots | Specialists in delegate management, event registration and strategic meetings management |

Group Housing providers

| Company                       | Description              |
|-------------------------------|--------------------------|
| Global Congress Accommodation | A group housing provider |
| BCD Meetings & Events         | A group housing provider |

Service providers

Our service provider partners offer a range of additional services for events.

| Company                     | Description  |
|-----------------------------|--|
| AKA promotions Ltd          | Global entertainment marketing & advertising agency for the live entertainment, arts and culture               |
| Blue Badge Guides London    | Association of London guides   |
| Bustronome                  | Fine dining the top deck of a hi-spec, glass-roofed travelling around London's major attractions and landmarks |
| DisabledGo                  | Access information for disabled people in the UK   |
| Encore Tickets Ltd          | Event ticket seller  |
| Hiscox Event Insurance      | Insurance Providers  |
| Moore People Event Staffing | Hosting and Support Staff  |
| Nannybag                    | Creative luggage storage solution  |
| Open Exhibitions            | Exhibition stand design and build contractor   |
| Q- Park                     | City parking throughout the UK   |
| Rentuu                      | Online, Global Equipment Hire Marketplace for the events industry  |
| Rod Edwards Photography     | Specialist in 360 degree photography   |
| SMG Insight                 | Sport and sponsorship research   |
| Sternberg Clarke            | Entertainment Provider   |
| The Leisure Pass Group      | Sightseeing and tourism technology specialist, which develops and manages The London Pass                      |

Tax reclaim

| Company          | Description           |
|------------------|-----------------------|
| Blick Rothenberg | Tax refund for events |
| Kingston Smith   | Tax refund for events |
| Oury Clark       | Tax refund for events |
| RSM              | Tax refund for events |
| BDO              | Tax refund for events |

Business Improvement Districts ( BIDS)

| Company                           | Description   |
|-----------------------------------|---|
| The Crown Estate                  | One of London's most significant property owners  |
| City of London Corporation        | Provider of local government and policing services for the financial heart of London  |
| New West End Company              | A global business partnership of 600 retail, restaurant, hotel & property owners in the world's top shopping & leisure district |
| Heart of London Business Alliance | Represents 500 businesses in the Piccadilly, St James and Piccadilly areas of London  |
| South Bank Employer's Group       | A unique partnership of 18 of the major organisations in South Bank, Waterloo & Blackfriars                                     |
| Covent Garden ( Capco)            | A leading retail and dining destination in the heart of London  |
| Shaftesbury PLC                   | A real estate investment trust which invests exclusively in the liveliest parts of the West End                                 |

Caterers

| Company           |
|-------------------|
| Berkeley Catering |
| By Word of Mouth  |

Transport

| Company                       | Description  |
|-------------------------------|--|
| Eurostar International Ltd    | High speed passenger train from London to Paris and Brussels |
| Excess Baggage                | Baggage shipping and storage services                        |
| Little's Chauffeur Drive      | Chauffeur driven cars and limousines                         |
| Luggage Hero                  | Luggage storage  |
| MyDriver                      | Chauffeur driven cars and limousines                         |
| Peter Carol Prestige Coaching | Luxury coaches for business travel                           |
| Serco Caledonian Sleepers     | Overnight to Scotland train travel                           |
| Southeastern Railway          | Passenger trains in the South East                           |
| Southwestern Railway          | Passenger trains in the South West                           |
| Stasher                       | Luggage storage company                                      |
| Stansted Express              | London to Airport Express Train                              |
| Heathrow Airport              | The second busiest airport in the world                      |
| London City Airport           | The only airport in central London                           |

Group activities

| Activity                         | Description  | Max group size | Location            |
|----------------------------------|--|----------------|---------------------|
| B Bakery                         | Cafe and Afternoon Tea - Bus                                 | 500            | Various             |
| City Academy                     | Team Building, Event animation, Learning and Development     | n/a            | Various             |
| Cookery School                   | Guided group cooking   | 50             | Oxford Circus       |
| Hollywood Bowl                   | Bowling lanes with a difference                              | 800            | North Greenwich     |
| Foxtrail                         | Code breaking hunt for the Fox around London's hidden places | 12             | Various             |
| Lee Valley White Water Centre    | White water rafting, kayaking and canoeing                   | 54             | Waltham Cross       |
| London Stadium                   | Team Building and Interactive Tours                          | Various        | Stratford           |
| Royal Shakespeare Company        | Theatre  | n/a            | Multi locations     |
| small car BIG CITY               | Classic Mini Cooper Hire in London for events                | 24             | Trafalgar Square    |
| Thames Jets                      | Speed boats on the river                                     | 12             | Optional            |
| Thames RIB Experience            | Speed boats on the river                                     | 12             | Waterloo/Tower Hill |
| Thames Rockets                   | Speed boats on the river                                     | 12             | Optional            |
| Twizy Tour                       | Self-drive tour in an electric Renault Twizy                 | 2              | Optional            |
| Up at the O2                     | Climb the O2   | 16             | North Greenwich     |
| Kidzania ( Lime Venue Portfolio) | Real Life Role play adventures                               | 1000           | Shepherd's Bush     |

Tours

| Company                                      | Max group size                               | Other info/services  |
|--|--|--|
| Bank of England Museum                       | Various                                      | Presentation for pre-booked groups   |
| Beefeater Distillery                         | 15 pax per tour, tours every 15 minutes      |  |
| Big Bus Tours                                | 100  |  |
| Brit Movie Tours                             | 250  |  |
| British Tours                                | more than 6pax in minibus                    | Private London Tours   |
| Buckingham Palace                            | Various tour options available               | reduced admission for groups of 15+  |
| Fat Tire Tours                               | 15 per guide, 150 overall group size maximum |  |
| Golden Tours                                 | coach and leisure/entertainment tours        |  |
| Institution of Civil Engineers               | Various                                      | Engineering exhibitions  |
| London Architecture Foundation Walking Tours | 15pax per tour                               | walking tours by local architects, dedicated urbanists, former politicians and Londoners |
| London Stadium Tour                          | Tour of the London (Olympic) Stadium         | Multimedia and match day tours   |
| London Walks                                 | 35 pax per guide                             |  |
| Rabbie's                                     |  | small group tours of UK and Europe   |
| Sandeman's New London Ltd                    | 40 per guide                                 |  |
| Society of London Theatre (SOLT)             | 30 per group                                 | theatreland walking tours  |
| Wimbledon Lawn Tennis Museum                 | 45 per guide                                 |  |
| Windsor Castle                               | 15 per group                                 |  |

Restaurants

| Venue                               | Exclusive hire dinner | Reception | Private dining | Closest Tube     |
|-------------------------------------|-----------------------|-----------|----------------|------------------|
| Fortnum and Mason                   | 220                   | 300       | 60             | Green Park       |
| Cafe in the Crypt                   | 200                   | 350       | n/a            | Charing Cross    |
| Cinnamon Kitchen & Anise            | 140                   | 250       | 16             | Liverpool Street |
| Cinnamon Club                       | 130                   | 300       | 60             | St James Park    |
| OXO Tower Restaurant                | 150                   | 250       | 120            | Southwark        |
| OXO Tower Brasserie                 | 150                   | 350       | 60             | Southwark        |
| OXO Tower Bar                       | 32                    | 75        | 32             | Southwark        |
| Roux at The Landau                  | 150                   | 150       | 96             | Oxford Circus    |
| City Social ( Lime Venue Portfolio) | 300                   | 300       | 120            | Liverpool Street |









# THE TOWER ROOM



## A ROOM WITH A VIEW

Located on the 6th Floor at 2 More London Riverside, the Tower Room offers stunning views and the versatility to accommodate a variety of events, from conference, theatre and cabaret-style meetings to corporate events, receptions, product launches and workshops.

With 180-degree views over the river Thames, the Tower of London and iconic Tower Bridge, the room features natural daylight complete with blackout blinds, and is fully equipped with high-tech AV equipment and wifi. The Tower

Room can also be used for photoshoots or video productions, with the iconic landmarks in the background as a perfect setting.

A list of preferred caterers provide a range of options from breakfast, work lunches, evening canapé receptions and seated dinners.

**For more information,**  
email [conventionbureau@londonandpartners.com](mailto:conventionbureau@londonandpartners.com)  
or call + 44 (0) 20 7234 5833.

### The Tower Room offers plenty of space for your delegates:

|               |    |
|---------------|----|
| Theatre       | 80 |
| Classroom     | 36 |
| Reception     | 80 |
| U-Shape       | 24 |
| Cabaret       | 45 |
| Dinner        | 22 |
| Boardroom     | 24 |
| Hollow square | 32 |





**TRANSPORT**



# GETTING AROUND LONDON



More than

**20,000**

licensed taxis

Hail a taxi

or book  
in advance



Pay with a credit, debit or contactless card for no extra charge



**Docklands Light Railway (DLR)**

London's innovative, driverless service

**5**

Links

areas across east and south-east London



Six routes

on London's River Bus

**22**

piers

along the river Thames between Putney and Woolwich

**11,500**

Santander available for hire



**750**

docking stations



**The Overground**

travels above ground, linking suburban areas in London

**112**

stations

spread across 23 London boroughs



**Elizabeth line (opening soon)**

**60 miles**

of new line stretching across Greater London

**43 minutes**

to travel from Heathrow to ExCeL

**11 Underground lines**

Five lines run a 24-hour service on Fridays and Saturdays: Victoria, Central, Jubilee, Northern and Piccadilly lines

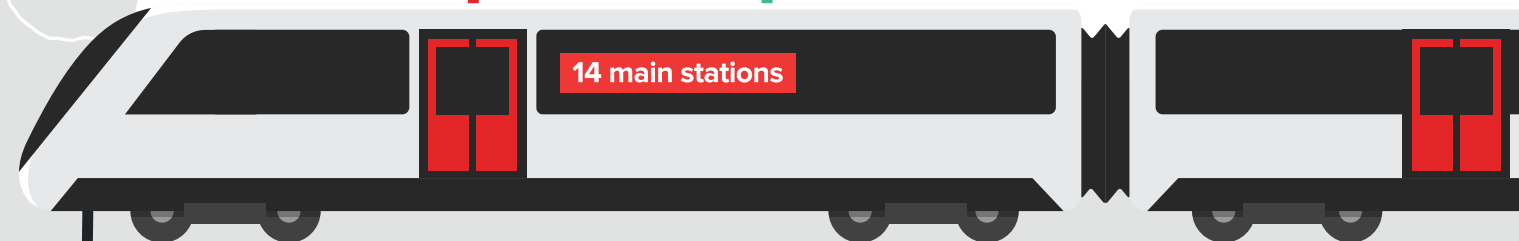


hour network



**9,300**

buses







## THE ELIZABETH LINE

The Elizabeth line is one of the most significant infrastructure projects ever undertaken in Europe. It's set to provide easier, quicker and more direct travel opportunities throughout the capital.

### More capacity

With capacity for 1,500 passengers per train, delegates will get to their destination in comfort.

### Accessibility

The Elizabeth line will stop at 41 accessible stations (including Heathrow), travel through central London and Canary Wharf, as well as cross by ExCeL London and hotels onsite.

With the new line, London will have some of the **most accessible event venues** in the world. Delegates travelling from Heathrow will be able to get to London's West End in 28 minutes, the City of London in 34 minutes and ExCeL London and The O2 in 43 minutes. The trains will be fully accessible, air-conditioned and wifi-enabled.


### Stats

- 60 miles of new line stretching across Greater London
- 43 minutes to travel from Heathrow to ExCeL

### The Elizabeth line in numbers

 **200**  
million passengers  
a year

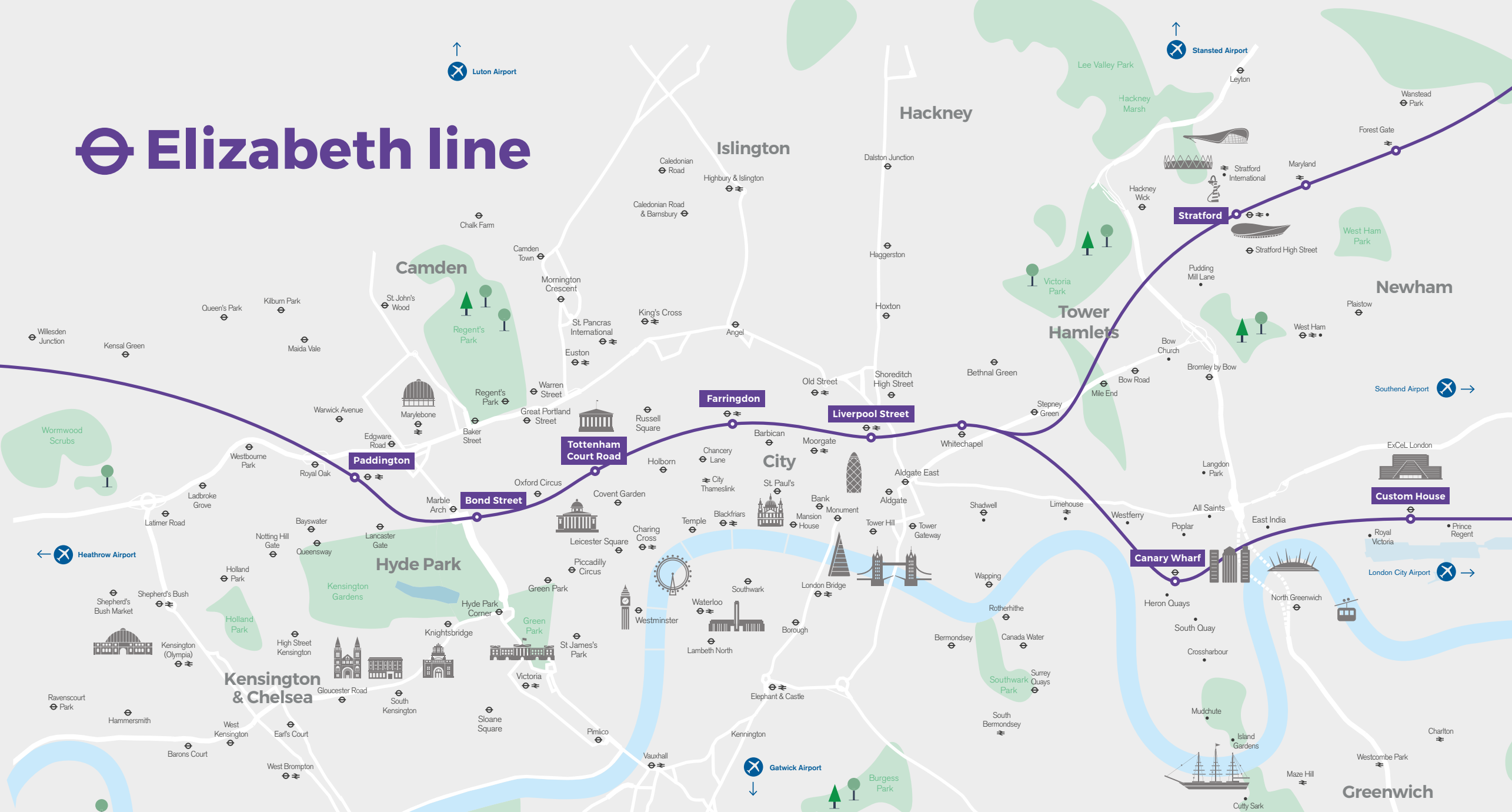
 **10%**  
increase in central  
London's rail capacity

 **Improved wayfinding**  
for visitors to London  
with new signage,  
screens and help  
points across the line

“  
Once fully open, the Elizabeth line will transform travel in London and beyond, boosting the UK economy by billions of pounds and supporting thousands of new jobs and homes in London and the South East. It will offer brand new, step-free journey options.

Mark Wild,  
Crossrail Chief Executive

# Elizabeth line



## Heathrow

39 hotels, 13,144 bedrooms  
Connections:  
Piccadilly line

## Paddington

20 mins from Heathrow  
12 hotels, 3,577 bedrooms  
Connections:  
Circle & District line  
Bakerloo Line  
Hammersmith and City line

## Bond Street

23 mins from Heathrow  
39 hotels, 8,500 bedrooms  
Connections:  
Central line  
Jubilee line

## Tottenham Court Road

28 mins from Heathrow  
69 hotels, 12,455 bedrooms  
Connections:  
Northern line  
Central line

## Farringdon

31 mins from Heathrow  
22 hotels, 2,602 bedrooms  
Connections:  
Circle line  
Hammersmith and City line  
Metropolitan line

## Liverpool Street

33 mins from Heathrow  
28 hotels, 6,463 bedrooms  
Connections:  
Central line  
Circle line  
Hammersmith and City line  
Northern line  
Overground

## Canary Wharf

40 mins from Heathrow  
13 hotels, 2,679 bedrooms  
Connections:  
DLR  
Jubilee line

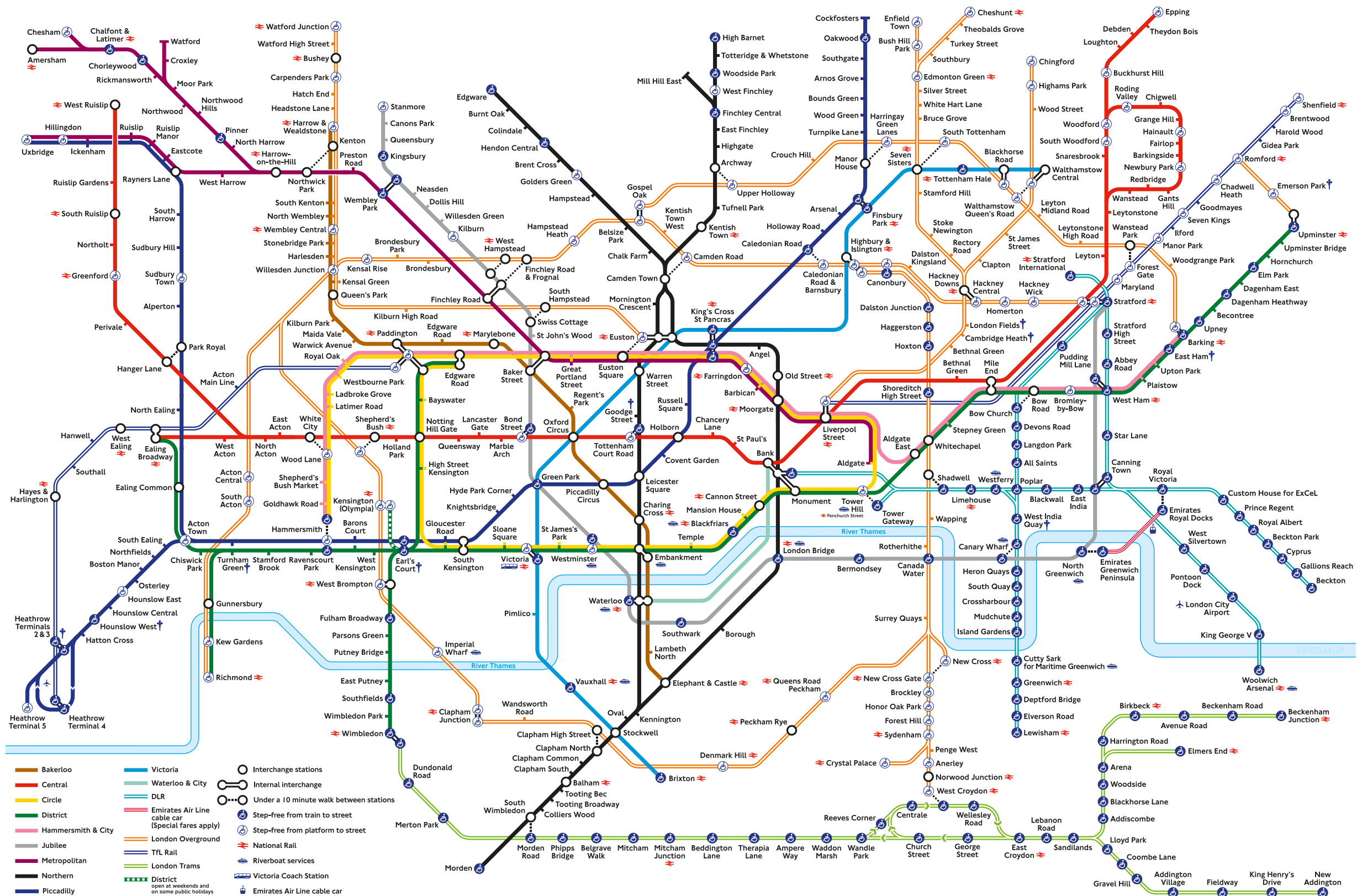
## Stratford

45 mins from Heathrow  
3 hotels, 644 bedrooms  
Connections:  
Central line  
Jubilee line  
DLR  
Overground

## Custom House

43 mins from Heathrow  
13 hotels, 2,694 bedrooms  
Connections:  
DLR









## Notes

## Notes



# We've got London meetings covered

14 hotels across the city offering more than 120 meeting rooms, all with unlimited fast, free Wi-Fi. glh hotels are the perfect space for your London event.

## AMBA HOTELS

Flexible big, bright and well-connected spaces for up to 200 people. At Amba Hotels everything will look great and work perfectly.



Luxury hotels in iconic locations accommodating up to 550 guests. Whatever the event, Guoman Hotels provide the perfect setting.



## thistle

Whether you're planning a meeting for the board or an event for 700, Thistle Hotels will have the space that's right for you.

