

Event Planner Guide 2019

LONDON
CONVENTION BUREAU

Make your booking **more** **rewarding...**



Up to £500 of shopping
vouchers for you



Monthly prize draws
for every enquiry

At glh Hotels we know how hard you work booking Meetings and Events. So much to organise, so much to plan - so wouldn't it be nice if you were rewarded **every time you booked?** To find out more and to make an enquiry please visit glhhotels.com/LondonGuideRewards

Contents

Welcome to London	4
How we can help	5
London at a glance	6
London's highlights	8
New London	
Value London	
Cultural London	
Leafy Greater London	
Royal London	
Luxury London	
Sector insights	14
Tech London	
Medical London	
Creative London	
Financial London	
Urban London	
Partner index	20
The Tower Room	38
London Map	40
Elizabeth Line	42
Tube map	44

Welcome to London

Firstly, thank you for considering London for your next event. Our MICE scene is constantly evolving and the capital will always inspire your delegates, whether you are looking for a new and high tech venue, or an event immersing them in over 2,000 years of history. We are delighted to introduce you to the best hotel, the perfect venue or the ideal DMC and work with you to produce a real wow-factor event.

The city is home to more than 1,000 diverse venues, from blank canvas warehouse spaces to purpose built conference centres, grand palaces and state-of-the-art auditoriums. There are more than* 146,000 hotel rooms from budget to boutique and group activities that will have your social media followers green with envy! Whether it is for 10 or 35,000 attendees, an exclusive incentive programme or a city-wide tech event – London has it all.

So why not bring your delegates to London, and let them enjoy all that we have to offer. Please use this Event Planner Guide 2019 as a practical index and event inspiration and don't hesitate to ask the London Convention Bureau team for assistance with your next London event.



Tracy Halliwell

Tracy Halliwell MBE
Director Tourism, Conventions & Events
London & Partners

How we can help

As London's official Convention Bureau, we help event professionals, meeting organisers and incentive planners achieve the most out of London's iconic venues, hotels and support services. Our impartial team provides free advice to help you unlock city gems, plan site inspections and connect you with the right venues and solutions to meet your needs. Visit conventionbureau.london to discover what's new in London, to find useful resources and contact information, and to submit an RFP.

London | +44 (0)20 7234 5833
conventionbureau@londonandpartners.com

New York | +1 212 850 0366
jnovick@londonandpartners.com

The London Convention Bureau is part of London & Partners, the Mayor of London's official promotional agency. We promote London internationally as a leading city in which to invest, work, study and visit. We help international companies set up, grow and invest in the city. Through our Business Growth Programme and the Mayor's International Business Programme, we enable London-based businesses to grow across the capital and to expand internationally.

 [@London_CVB](https://twitter.com/London_CVB)

London at a glance

6 Airports

396

Direct flights to international destinations



Five lines run a 24-hour service on Fridays & Saturdays: Victoria, Central, Jubilee, Northern and Piccadilly lines.

455,209

Average number of passengers per day



1.37bn

People use the underground every year



1600
Number of hotels

more than

1700

Future hotels to be built by 2020



140,000

No. of rooms

24 FREE attractions



4 UNESCO

World heritage sites



70
Michelin stars
19,000 places to eat

173 Museums

857
ART GALLERIES

Three of the top ten museums and galleries in the world are in London with 857 art galleries in total

1000+
Diverse venues

12 main stations

12 lines

covering **586 km**
and serving **422 stations**

London facts

more than

17,000 music performances a year across London's 300+ venues including the O2 arena - the world's most popular music venue.



London Fashion Week

generates over £100m of orders and over 32,000 hours of digital content watched in the UK from more than 100 countries.



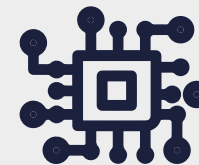
1,364

medical clinics, manufacturers, pharmaceutical and biotechnology companies



233

foreign languages in London Language Capital CILT report (2010)



No of Tech companies: London's tech sector is currently home to 46,000 enterprises, contributing 240,000 jobs across the city.



No of HQ's in London: 93 Fortune 500 companies have an HQ in London and a total of 184 have a presence here



No of people employed in London's creative economy: 816,000 people work in London's creative economy which contributes to 15 per cent of the city's jobs.

143,000

people employed in the banking sector



London's Highlights

Luxury London

Discover London's luxurious offerings from Michelin-starred restaurants to distinguished shopping districts.

Find a base in one of London's exclusive neighbourhoods, famed for their mixture of designer shops, cultural attractions and world-class dining. The prestigious area surrounding the **Conrad London St. James** boasts independent shops and historic members clubs, while **The Park Tower Knightsbridge** has fantastic restaurants and Harrods on its doorstep. Continue the high-end shopping experience at The Village in **Westfield London**. Here, you'll discover more than 35 designer boutiques, and have the chance to shop with a personal stylist.

Add a wow factor by choosing an iconic room for your venue. Admire the stunning wood panelling of The Oak Room at **Le Meridien Piccadilly**, experience 1920s glamour in the art deco ballroom at **Sheraton Grand London Park Lane**

or enjoy floods of natural light from the distinctive glazed ceiling in the Palm Court of **The Waldorf Hilton**, London.

Ensure delegates are well catered for at a top restaurant – try seasonal Irish fare with Corrigan's Mayfair at **Grosvenor House**, **A JW Marriott Hotel**, or experience culinary excellence at two Michelin-starred Hélène Darroze at **The Connaught**.

Other sumptuous offerings include traditional afternoon tea at **Claridge's** and a contemporary take on the British ritual at **Rosewood London**, where patisseries are



Hidden gems:

*The Goring | The Hari | The Stafford
11 Cadogan Gardens*

served in the guise of famous artworks.

Shopping and eating is tiring work, so relax in an opulent spa. Unwind with a detox wrap at The May Fair Spa in **The May Fair Hotel** and feel rejuvenated after a dip in the relaxation pool at **St Pancras Renaissance Hotel London**.

Round off a busy day with a tippie at an exclusive watering hole. Look to The Perception at **W London – Leicester Square** for a bar with red carpet glamour, while the Green Bar at **Hotel Café Royal** offers botanical cocktails to savour.



New London

Experience a different side of London during each visit, as exciting new spaces open every year.

From acclaimed restaurants to stunning hotels, London continues to innovate with new venues and transformed establishments.

Delight in London's evolving restaurant scene, including **Quaglino's**. Sample fine European food and enjoy entertainment at this legendary restaurant, which remains at the top of its game after an extensive refurbishment. Continue to create memorable experiences at **Hollywood Bowl at The O2**, the latest addition to the world-famous entertainment space. The 12 bowling lanes are available for private hire, with tempting food and drinks packages to ensure the good times keep rolling in.

Alternatively, sports fans can soak up the atmosphere at **Tottenham Hotspur's** new stadium, featuring events spaces that can accommodate up to 1,500 guests, while smaller events are well catered for at **CCT Venues'** latest offering in the Docklands. Minutes from Canary Wharf, this recently refurbished venue offers a private waterfront terrace.



King's Cross Railway Station

If you need a venue in the City of London, look no further than **Grace Hall**. Combining the best of old and new, this stunning hall boasts period features with modern styling and offers a range of flexible event spaces. For accommodation in the area, **Dorsett London City** has stylish rooms and a roof terrace with incredible views, while **Qbic London City** offers quirky design at excellent rates.

Head further east into London's tech hub to find a blend of modern functionality and Asian-inspired design at **Nobu Hotel Shoreditch**. Or, if the literary legacy of Bloomsbury appeals, there's **The Principal London** – a new hotel that embraces the building's rich history. For easy access to Heathrow airport, you can stay at the recently refurbished **Royal Lancaster London**, which has great transport links from nearby Paddington station.



Hidden gems:

*The Arch London | The LaLiT London
Prince Philip House*



Royal London

Uncover London's rich history with truly regal events in royal palaces and stunning halls.

Let your delegates sample a taste of royal life by exploring one of London's many palaces. Each year, from late July until the end of September, the lavish **Buckingham Palace** open its doors to visitors and showcases a special exhibition. The **Royal Mews**, which houses the golden state coach and carriage horses, is also open from February to November.

From here, you can stroll through St James's Park, one of eight **Royal Parks** across the city, to **Westminster Abbey**, the historic setting of some of the most famous royal weddings and coronations.

Continue the journey into the capital's rich royal history with a trip to **Kew Gardens**. A short Tube

journey from central London, these famous botanical gardens offer an intimate glimpse into the lives of past royal families. Admire **Kew Palace**, a summer retreat for George III, and the quaint Queen Charlotte's Cottage, surrounded by a 300-year-old bluebell wood.

For a truly memorable experience, choose a royal venue as the setting for your event. Soak up almost 400 years of history with a dinner or reception at **Kensington Palace**, which has been home to many popular royals including Queen

Victoria, Diana, Princess of Wales and at present Princes William, Harry and their families. Or, dazzle your guests with an event at **Banqueting House** in Whitehall. Home to a stunning painted ceiling by Rubens, the building was created to host extravagant court entertainment for James I.

Another of Historic Royal Palaces' venues available for private hire is the **Tower of London**, where your delegates can enjoy a drinks reception and a private viewing of the crown jewels.



Natural History Museum



Hidden gems:

Fortnum & Mason | Hampton Court Palace

Cultural London

Soak up some culture in London by holding your event in one of the city's museums, galleries or attractions – the perfect backdrop for a grand event.

Arrange your event near famous works by Van Gogh and Rembrandt at the **National Gallery**; discover paintings from 1500 to the modern day during a meeting at **Tate Britain**; or catch the latest exhibition at the **Royal Academy of Arts**, which has opened a new extension as part of its 250th anniversary celebrations. Alternatively, seek out a spot alongside contemporary and modern works at the **Saatchi Gallery** and **Tate Modern**.

Put a historical spin on your event at one of London's many museums. Find mummies and the Rosetta Stone in the vast halls of the **British Museum**. Learn about the city's history at the **Museum of London** and **Museum of London Docklands**. Or, for something more immersive, try out hands-on exhibits at the **Science Museum** in Kensington.

The **City of London** has a range of attractions with event spaces. Explore the Whispering Gallery and marvel at the magnificent dome at **St Paul's Cathedral**, or learn about the history of one of the world's most famous bridges at the **Tower Bridge Exhibition**, which is home to a vertigo-inducing glass walkway.

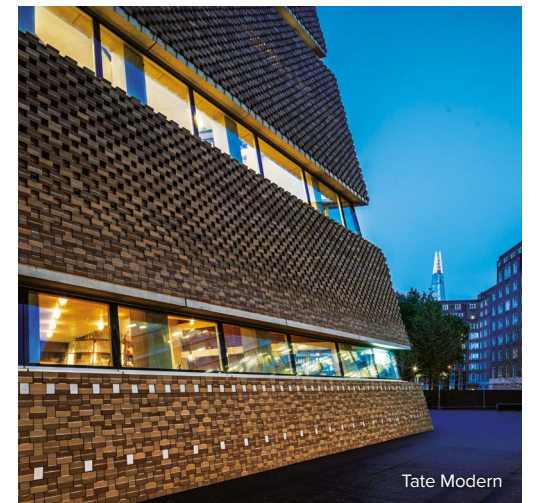
Wander London's South Bank and you'll find many world-class attractions that are perfect for events of all kinds. Take in the views from the **Coca-Cola London Eye**, get up close and personal to sharks at **SEA LIFE London** aquarium, venture along the Thames on the **London Eye River Cruise**, or dare to venture through the **London Dungeon**. Film, theatre, art and music combine with fine dining and street food at the **Southbank Centre**.



Hidden gems:

Bank of England Museum | Spencer House
Postal Museum | The City Centre and
Roman Amphitheatre

Rub shoulders with wax figure versions of your favourite movie stars at **Merlin Entertainments' Madame Tussauds** or take a trip to Hogwarts with the **Warner Bros. Studio Tour London – The Making of Harry Potter**. Both provide plenty of photo opportunities for film buffs and delegates alike.



Tate Modern



National Portrait Gallery



Richmond Park

Leafy Greater London

Venture outside central London and you'll find eclectic neighbourhoods full of sports, arts and heritage venues. What's more, all of these memorable venues have first-class transport links to the city centre.

As a sports-mad city, London has plenty of iconic stadia to explore. Look out onto the famous pitch at the home of football, **Wembley Stadium**. Visit state-of-the-art **London Stadium**, which hosted the 2012 Olympic and Paralympic Games and is now a fantastic multi use events space hosting conferences and concerts. Or hotfoot it to south-west London, where rugby venue **Twickenham Stadium** awaits. All of these venues have superb facilities for conferences, exhibitions, meetings and banquets, and host tours for sports fans.

If you're craving open space, stroll through one of London's **Royal Parks**. Ranging from untamed Richmond Park, to well-kept St James's Park with its flower borders and tranquil lake, these 8 green gems are great for relaxed events. The Royal Parks also look after pretty Brompton Cemetery, which is a peaceful spot for contemplation, a short Tube ride from exhibition and events centre, **Olympia London**.

Alternatively, enjoy some of the best views of the city skyline from the grounds of **Alexandra Palace** in north London. This Victorian palace opened in 1837 and

was the site of the first ever public television transmissions in 1936. Today, it's home to a boating lake, pitch and putt golf course, ice rink and a range of event options.

For a fun day out, take a short trip to **Greenwich** by train, Tube, DLR or riverboat. This well-connected south-east London area is one of the city's most charming riverside spots. Learn more about the world's oldest surviving tea clipper **Cutty Sark**, explore sea-faring tales at the **National Maritime Museum**, or meander around Sir Christopher Wren's imposing **Old Royal Naval College** – all of these historic attractions provide facilities for events.

You can find plenty of quiet retreats that are easily accessible from the centre of London. Book into modern hotels such as the **Clayton Hotel Chiswick** and **The Lensbury**; or opt for the likes of the **Clayton Crown Hotel**, which features a relaxing pool that's perfect for a spot of pampering.

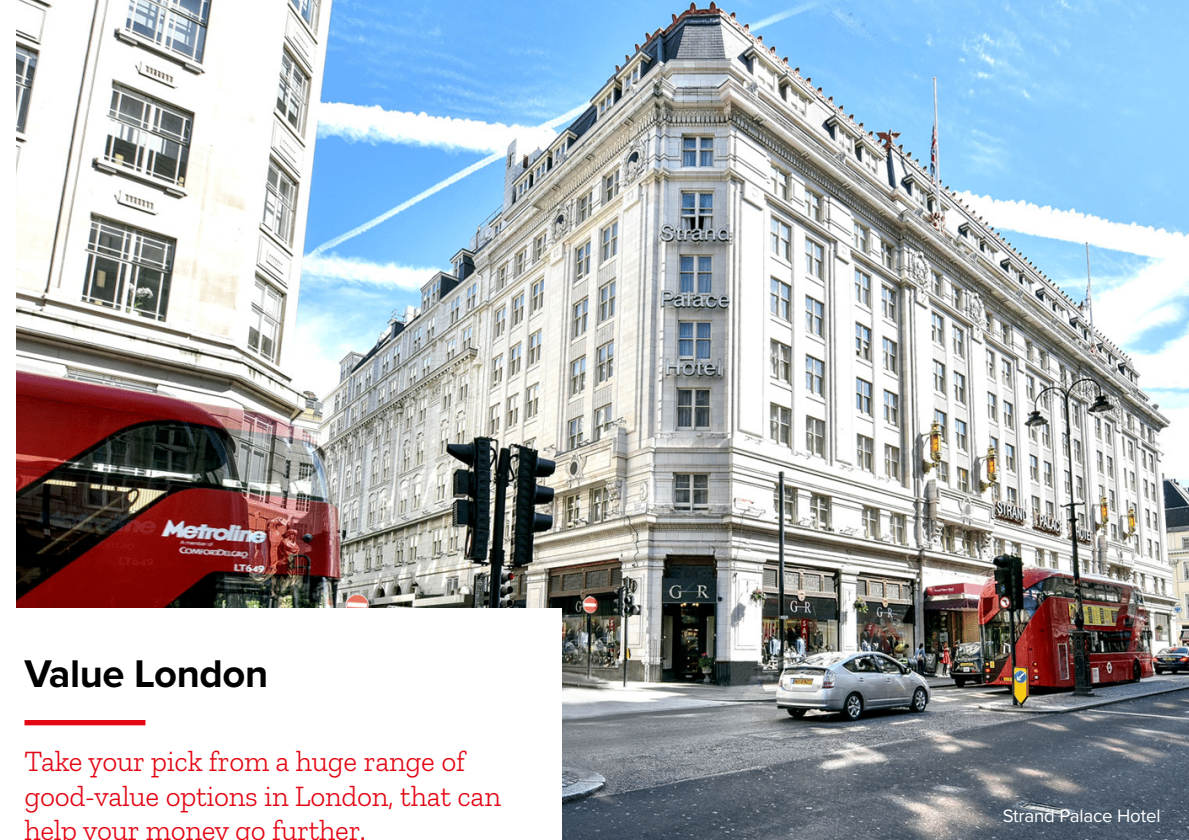


Old Royal Naval College



Hidden gems:

*Hilton London Heathrow Terminal 5
Hilton Syon Park*



Strand Palace Hotel

Value London

Take your pick from a huge range of good-value options in London, that can help your money go further.

Hold your event at one of the largest conference hotels in Europe, **Hilton London Metropole**, which is one of many Hilton hotels offering excellent value for money. Make the most of its location on Edgware Road near Paddington station, which provides excellent transport links to Heathrow Airport and the rest of the city.

Nearby, the **Amba Hotel Marble Arch** is the perfect base to explore Hyde Park – it's sister hotel, **Amba Hotel Charing Cross**, is just steps away from Trafalgar Square and the nearby bars and restaurants of Covent Garden.

Enjoy a location close to Bloomsbury's sedate squares with rooms at **Radisson Blu Edwardian, Kenilworth**, and **Radisson Blu Edwardian, Bloomsbury Street**. Or

enjoy being close to Fitzrovia's glut of restaurants and bars at **Radisson Blu Edwardian, Grafton**. All of these boutique-style options offer refined luxury for a good price.

Stay near the river at **The Tower Hotel**, which has more than 800 bedrooms and spectacular views of Tower Bridge. Alternatively, book into **Park Plaza London Riverbank** and **Park Plaza Westminster Bridge London** near Waterloo station and the South Bank. Or base yourself at **Park Plaza Victoria London**, which has good connections via Victoria station.

If you're looking for hotels in west London, **Novotel London West**



Hidden gems:

Senate House | Queen Mary University of London

boasts large meeting spaces and 630 bedrooms in well-connected Hammersmith; while the **Cophorne Tara Hotel London Kensington** or the **Millennium Gloucester Hotel London Kensington** are located close to the high-end shops in that area.

For something a little different, stay at one of **Airbnb's** many properties, including a range of options for co-working groups. More unusual event spaces include the **Twickenham Stoop**, home to the Harlequins rugby club, in south-west London.

Sector Insights

Urban London

Urban is a new key sector for the Mayor of London, and involves sustainable transport, regeneration projects and pollution control. Find out how London is becoming a smarter city to enhance the wellbeing of its residents.

Throughout its 2,000-year history, London has evolved to become the global city it is today. But like other major cities, the British capital faces challenges to ensure it works for Londoners and is equipped for the future. Over the last few decades, London has launched a number of regeneration projects, looking to revitalise some of its neighbourhoods.

King's Cross, which used to be an industrial area, has become a trendy cultural destination with scores of restaurants, bars and shops, thanks to significant investment. The redevelopment of St Pancras International station, which links London to the continent via **Eurostar** services, has also improved the area's accessibility since 2007.

Battersea Power Station is another successful regeneration story. The Grade II*-listed building was closed for several decades until recently, when work started to turn it into a new lifestyle destination featuring



shops, restaurants, hotels and flats. **London's Royal Docks**, around the corner from entertainment venue **The O2**, has a similar history, transformed from a disused area to a thriving riverside hub. But despite this wide-scale regeneration, London has also retained much of its history. The city's markets have contributed to lively communities and continue to be at the centre of local life. **Old Spitalfields Market** in the **City of London** has been active for hundreds of years and is also available for hire, making for a great event backdrop.

Market Halls, a group of community-minded investors and restaurateurs, are also reviving the concept of food halls with two sites scheduled to open in 2019, on top of its first Fulham location. As well as this, London is working hard to future-proof its transport network.

The Elizabeth line, a new railway solution, launches in December 2019, allowing faster east-to-west transportation. Visitors and Londoners will be able to travel from



Heathrow to ExCel at Custom House in Stratford (for **ExCeL London**), in around 45 minutes. Work is also taking place to extend the Northern line to the Nine Elms and Battersea area, where **Battersea Power Station** and the new US embassy are located, with two new stations due to open in 2020. Find out more about London's urban developments and add specialist insights to your events with the experts at New London Architecture and the Urban Land Institute.

 **Hidden gems:**
Kings Place | The Crystal



Finance London

London is widely recognised as a leading global financial centre and, for the first time in 2019, the city is playing host to Sibos, the annual financial industry event. Discover the City of London and Canary Wharf, the capital's two financial hubs, and host your event in the centre of the sector.

The 40,000 London-based companies operating in the financial services sector are concentrated in the City of London, the capital's historical heart, and Canary Wharf in the east.

Those areas are an ideal stage for finance-related events and not only provide a wealth of venues, but also easy access to key opinion leaders and a strong delegate base.

Guildhall has a more than 800-year-old history and is now home to the **City of London Corporation**. The Grade I-listed building offers seven spectacular spaces available for hire, including an art gallery and two crypts, and can host up to 900 delegates

Modern venues include **Searcys at The Gherkin** and the **Sky Garden**, offering panoramic views of the city. Both locations are situated in iconic London buildings, known as the Gherkin and the Walkie-Talkie, and will leave delegates with lasting memories.

Located in Canary Wharf, **East Wintergarden** is a purpose-built venue, featuring three spaces fitted with modern technology, capable of hosting events for 20 to 500 delegates. The nearby **Level39**, an incubator and accelerator supporting fast-growth tech companies, is home to **The Sandbox**. This venue can host events for up to 250 guests and offers all the latest event tech, such as an HD screen, video conferencing and web streaming capabilities. Its location inside Level39 also means planners can easily source potential speakers.

Other venues in London's financial hubs include **CCT Venues'** two spaces in Canary Wharf, Docklands and Bank Street, as well as the **Novotel London Canary Wharf** hotel which offers 313 guest rooms and 9 meeting rooms. In the City of London, **99 City Road** is a contemporary event space located within Inmarsat's UK headquarters, and which offers 17 rooms capable of hosting events for up to 350 people.



Hidden gems:

*London Stock Exchange | Mansion House
Landing Forty Two at the Leadenhall Building*



Creative London

From film and music, to museums and eSports, London is home to a thriving and wide-ranging creative sector. Explore the best venues to host your creative event.

London's creative sector boasts a range of flourishing industries which contribute around £42bn to the city's economy, making it the perfect place for planners working with creative companies.

For corporate events or incentive programmes, London has plenty of venues which can integrate performing arts into event programmes. **The Barbican** is one of the largest performing art venues in the world. As well as the centre's 13 event spaces, which include auditoriums, a theatre, cinemas and a conservatory, the team can assist with speaker sourcing and motivational programme activities, such as backstage tours and meet-the-artist sessions.

Sadler's Wells is celebrated for bringing the best of the world's international dance performances to London. From intimate meetings, to large conferences and screenings, the venue has 9 event

spaces and can accommodate up to 1,500 people.

Experience London's world-renowned music scene at **Cadogan Hall**, one of London's most prominent concert halls. The venue offers three smaller spaces with a capacity of up to 500 delegates, while the main auditorium can hold 953 guests. For an event space with a twist, planners can hire one of the most famous clubs in the world, **Ministry of Sound**. The venue offers six spaces to fit any type of event, from standing receptions and conferences, to parties and seated dinners.

For planners looking to take advantage of London's world-class theatre scene, the **Society of London Theatre (SOLT)** can liaise



Hidden gems:

LSO St Luke's | RSA House | Abbey Road Studios



Sadler's Wells Theatre

with London's numerous theatres to organise venue hire, as well as backstage access.

On the film side, the **BFI IMAX** has the largest cinema screen in the UK and is capable of hosting events for up to 500. The auditorium is a great venue for product launches, award ceremonies and film premieres, while the ground floor and first-floor foyer can be used for receptions, presentations and seated dinners.

For event organisers in need of a flexible space, the **Business Design Centre**, in fashionable Islington, features both exhibition and conference areas, as well as an executive centre perfect for smaller meetings.



Tech London

The technology scene in London may be centred around Shoreditch and Old Street, where 40,000 tech businesses thrive, but vibrant spaces for tech-related events are dotted all over the city.

London's largest event space, **ExCeL London**, plays host to many tech events. From giant trade shows to global board meetings, there are venues-within-venues in this incredible complex. You can also find a range of hotels in the vicinity, including the **Aloft London Excel**, **Novotel London Excel**, **ibis Styles London Excel**, **DoubleTree by Hilton London ExCeL** and London's first superyacht hotel, **Sunborn London**.

Tobacco Dock is another large event venue in London. With an advanced tech infrastructure and multiple spaces within a historic set of timber-framed buildings and courtyards, it's a popular venue for the tech sector and is just one stop on the Tube from the City of London.

QEII Centre London has been a trusted venue for meetings, dinners and conferences for more than 30 years, with views of Big Ben. Its award-winning AV team, QEII Live, offers bespoke technology packages that give your conference the professionalism it deserves.


Entertain your delegates in style with an event at **Altitude 360**, treating them to 360-degree views of the city. The space, located in Westminster, is a blank canvas which can be adapted to fit your requirements. Day delegate packages are also available.

The IET London: Savoy Place on Embankment has stunning river views from its roof terrace, complementing its array of modern business facilities.

Acclaimed co-working space provider WeWork has several locations around the city, some of which offer private hire. For planners looking for purpose-built venues, **Prince Philip House** and **etc.venues** offer a number of spaces across London.

For increased media exposure and networking opportunities, host your event during London Tech Week, Europe's largest festival of live tech events. Taking place in June every year, this is a unique, city-wide tech festival celebrating the capital's booming, diverse and vibrant tech ecosystem.

For more information on London's tech sector, check out London & Partners' London's Tech Scene at a Glance guide.

 **Hidden gems:**
Aloft London ExCel | Sunborn London



Medical London

In recent years, London has welcomed a string of high-profile medical events, such as the **European Respiratory Society (ERS) International Congress** and the **Alzheimer's Association International Conference**. The city also recently announced the **European Society of Cardiology** would return for its annual congress in 2021. Discover some of the best venues to host your medical events in London.

London's life sciences ecosystem is what makes the city unique: it is home to four of the top 40 universities in the world, 50 clinical research centres and, together with the Greater South-East, is where more than 3,400 healthcare businesses are based, including the top 20 global pharmaceutical companies.

With these fantastic credentials in the industry, there's no better host city for medical, pharmaceutical and life sciences events than London.

The Royal College of Physicians has a variety of spaces and a unique garden of medicinal plants, in a complex that overlooks leafy Regent's Park in central London. **The Wellcome Collection**, close to Euston and King's Cross stations, has several meeting rooms, an auditorium and its fascinating Medicine Now gallery, which is also available for evening hire.

BMA House, the headquarters of the British Medical Association since 1925, has recently been upgraded

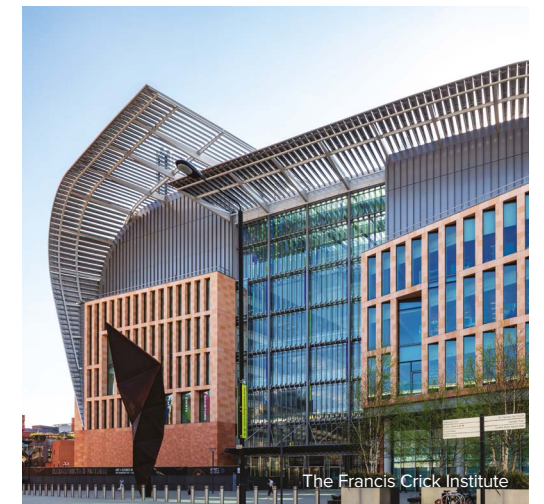
with high-tech facilities in its impressive location in Bloomsbury. The site is located within London's Knowledge Quarter, a world-leading cluster of life sciences expertise that also includes **The Francis Crick Institute**.

Across central and west London, the world-renowned **Imperial College London** has more than 200 event spaces, ranging from small meeting rooms to a Victorian townhouse.

The Royal Society of Medicine and the **Royal College of Obstetricians and Gynaecologists** are only a few of the many other London venues fit for medical and pharmaceutical events.

Numerous hotels, including several **Edwardian Hotels London** properties, and venues across London are compliant with the ABPI Code of Practice for the Pharmaceutical Industry. Edwardian Hotels also have Healthcare Champions in each hotel.

For more information, consult London & Partners' London for Medical Meetings guide, which details London's credentials and provides further practical information.



 **Hidden gems:**
Royal Hospital Chelsea | Royal Society of Medicine

Partner index

London & Partners represents a range of partners across every aspect of event planning from accommodation to transport providers. The partner index is a comprehensive list giving you access to some of the city's most trusted providers and a detailed guide to the city's accommodation and venue capacities.

Exhibition Centres

Centre	T	CA	CL	B	R	Max Sqm	Meeting Rooms	Closest Tube
ExCeL London	20-45000	20-3000	20-3000	20-3000	0-10000	100000	60	Custom House (DLR)
Olympia London	4000	n/a	n/a	3000	10000	1800-40000	6	Kensington Olympia (OV)
Business Design Centre	2500	960	670	900	900	2088	14	Angel
QEII Centre	1200	497	600	930	1200	1375	32	Westminster

Venues

Venue	T	CA	CL	B	R	Max Sqm	Meeting Rooms	Closest Tube
The O2	20000	n/a	n/a	2200	3000	3402	7	North Greenwich
Alexandra Palace	7000	3500	2000	5000	10250	6426	8	Wood Green
Battersea Evolution	4000	2200	1500	2200	4000	3750	1	Sloane Square
Southbank Centre	2500	100	40	160	250	174	11	Waterloo
Central Hall Westminster	2039	400	70	n/a	1300	734	5	Westminster
Barbican Centre	1943	96	100	280	650	736	15	Moorgate
Wembley Stadium	1800	1100	n/a	1800	3250	3480	25	Wembley Park
indigo at the O2	1625	336	n/a	540	1500	650	1	North Greenwich
Sadler's Wells	1500	150	100	160	350	225	10	Angel
Tobacco Dock	1500	770	350	1200	10000	1178	40	Shadwell (DLR and OV)
Twickenham Stadium	1200	500	150	900	1200	1173	175	Twickenham (National Rail)

(m - feet conversion 1m = 3.280ft)

T - Theatre CA - Cabaret CL - Classroom B - Banquet R - Reception (NR) - National Rail (OV) - Overground (DLR) - Docklands Light Railway

Venues

Venue	T	CA	CL	B	R	Max Sqm	Meeting Rooms	Closest Tube
Cadogan Hall	953	100	100	150	300	263	3	Sloane Square
The Brewery	900	500	390	700	1000	778	8	Moorgate
Chelsea Football Club- Stamford Bridge	850	550	550	650	1000	1400	24+	Fullham Broadway
Guildhall	760	320	210	624	900	630	7	Bank
De Vere Grand Connaught Rooms	750	400	315	540	1000	475	39	Holborn
Lee Valley VeloPark	750	n/a	n/a	750	750	2185	1	Stratford
Church House Westminster	664	208	198	372	550	519	19	St James Park
IET London: Savoy Place	626	138	130	300	330	408	21	Embankment
East Wintergarden	600	320	360	500	1000	682	3	Canary Wharf
Mermaid Conference and Events Centre	600	300	195	300	500	1305	8	Blackfriars
Senate House	600	200	150	348	350	416	13	Russell Square
London Cabaret Club	500	220	n/a	270	570	n/a	1	Holborn
etc Venues - 155 Bishopsgate	550	350	260	350	900	520	5	Liverpool Street
CentrEd at Excel	400	184	145	230	400	362	29	Custom House
etc Venues St Paul's	400	250	190	250	500	288	14	Barbican
etc Venues County Hall	400	252	180	252	800	394	18	Waterloo
Kings Place Events	400	100	72	220	440	286	10+	Kings Cross and St Pancras
One Great George Street	400	260	135	250	400	394.46	21	Westminster
KidZania	400	350	300	250	1,000	75,000	6	Shepherds Bush
Altitude London	370	200	200	450	600	750	4	Pimlico
CCT Venues Bank Street	325	160	150	220	300	2014	26	Canary Wharf
Royal College of Physicians	304	96	80	300	350	287	18	Regents Park
London's Living Room	300	100	n/a	100	250	n/a	11	London Bridge
Glaziers Hall	300	200	84	220	450	22.27	5	London Bridge
One Whitehall Place (Royal Horseguards)	300	170	180	228	350	214	13	Embankment
Victory Services Club	300	150	120	190	300	204	7	Hyde Park
BMA House	294	160	120	200	320	406	21	Euston
Banking Hall	280	180	180	280	900	378	3	Bank
Harlequin Stadium	250	220	n/a	600	2000	n/a	11	Twickenham
Sea Containers	215	105	56	150	600	n/a	5	Blackfriars
Sandbox	200	120	n/a	120	250	26.82	6	Canary Wharf
Grace Hall	200	n/a	n/a	170	600	n/a	4	Bank
The Pavilion at the Tower of London	200	600	200	700	1000	849	1	Tower Hill
Prince Philip House	170	90	70	120	300	159	10	Piccadilly Circus
Tottenham Hotspurs	160	100	n/a	200	300	n/a	14	White Hart Lane (OV)

(m - feet conversion 1m = 3.280ft)

T - Theatre CA - Cabaret CL - Classroom B - Banquet R - Reception (NR) - National Rail (OV) - Overground (DLR) - Docklands Light Railway

Venues

Venue	T	CA	CL	B	R	Max Sqm	Meeting Rooms	Closest Tube
Wellcome Collection	154	60	154	60	200	n/a	7	Euston
CCT Venues Barbican	150	90	100	n/a	150	14.86	21	Barbican
OXO2	150	n/a	n/a	220	400	537	2	Waterloo
Searcy's The Gherkin	140	70	n/a	140	260	n/a	4	Aldgate
Trinity House	130	130	67	130	180	164	5	Tower Hill
St Martin-in-the-Fields	120	60	n/a	100	120	126	4	Charing Cross
Spencer House	100	90	n/a	126	450	96	7	Green Park
Southwark Cathedral	80	56	80	200	800	556	7	London Bridge
The City Centre and Roman Amphitheatre	75	40	30	90	400	69.2	2	Bank
The Tower Room at London and Partners	50	35	24	25	80	86	1	London Bridge
Market Halls- Victoria	n/a	n/a	n/a	400	600	15000	3 (inc roof terrace)	Victoria
Market Halls- Fulham	n/a	n/a	n/a	300	400	10000	1	Fulham Broadway
Lancaster House	n/a	n/a	n/a	150	700	n/a	5	Green Park
Westfield Stratford	n/a	n/a	n/a	Experiential - car launches, large promotional events			n/a	Stratford
Westfield White City	n/a	n/a	n/a				n/a	Shepherds Bush
Lime Venue Portfolio	Various venues across London							Various

Attraction Venues

Venue	T	CA	CL	B	R	Max Sqm	Rooms for hire	Closest tube
National Maritime Museum Greenwich	1000	n/a	n/a	500	1000	1092	2	Cutty Sark (DLR)
BFI IMAX	498	250	n/a	250	500	251.7	1	Waterloo
BFI Southbank	450	60	20	80	450	180	1	Waterloo
Royal Opera House	450	n/a	n/a	450	1000	600	11	Covent Garden
Banqueting House	400	240	n/a	380	500	1844	2	Westminster
Science Museum	400	42	n/a	400	1000	on app	12	South Kensington
National Gallery	328	310	n/a	310	1200	345	18	Charing Cross
British Museum	323	40	45	300	650	496	8	Holborn/Russell Square
Saatchi Gallery	320	150	100	200	300	205	14	Sloane Square
ZSL London Zoo	300	240	N/A	260	300	411	12	Camden Town
Shakespeare's Globe	300	150	n/a	350	450	400	4	Southwark
British Library Conference Centre	255	30	24	70	240	n/a	6	Kings Cross/St Pancras
Royal Air Force Museum	250	120	50	444	800	480	10	Collindale
Hampton Court Palace	250	120	60	270	400	384	12	Hampton Court (National Rail)
Tate Modern	250	200	n/a	800	1500	n/a	16	Southwark

(m - feet conversion 1m = 3.280ft)

T - Theatre CA - Cabaret CL - Classroom B - Banquet R - Reception (NR) - National Rail (OV) - Overground (DLR) - Docklands Light Railway

Attraction Venues

Venue	T	CA	CL	B	R	Max Sqm	Rooms for hire	Closest tube
Museum of London	230	72	30	400	1000	404	15	St Pauls
Royal Botanic Gardens, Kew	230	160	150	230	400	388	7	Kew Gardens
English Heritage - Eltham Palace	210	126	n/a	200	300	18.58	3	Mottingham (National Rail)
Natural History Museum	209	360	360	650	1200	n/a	5	South Kensington
Design Museum	202	n/a	202	200	450	319	5	High Street Kensington
Imperial War Museum London	200	80	36	270	340	156	8	Lambeth North
Kensington Palace	200	120	70	230	300	221	3	High Street Kensington
Old Royal Naval College Greenwich	200	100	100	398	398	686	7	Cutty Sark (DLR)
Tate Britain	190	60	40	500	900	n/a	8	Pimlico
London Canal Museum	160	80	40	120	200	N/A	3	Kings Cross and St Pancras
HM Tower of London	150	100	80	240	300	384	12	Tower Hill
Houses of Parliament	150	n/a	n/a	170	450 Saturday, otherwise 200	932 - Saturday, otherwise 181	13	Westminster
V&A Museum of Childhood	150	50	30	300	900	800	5	Bethnal Green
Riverside Rooms	150	120	150	150	150	13.69	4	Waterloo
WWT London Wetland Centre	150	110	n/a	120	200		5	Hammersmith
Museum of London Docklands	146	80	n/a	200	400	n/a	7	Canary Wharf
National Portrait Gallery	138	60	60	230	400	n/a	9	Charing Cross
Warner Bros. Studio Tour London The Making of Harry Potter	125	n/a	n/a	520	600	2100	3	Watford North (National Rail)
London Transport Museum	121	n/a	n/a	180	500	n/a	3	Covent Garden
Churchill War Rooms	120	80	54	120	200	131	5	Westminster
The View from the Shard	120	n/a	n/a	50	300	873	2	London Bridge
Museum of Brands Packaging and Advertising	120	45	45	80	250	120	2	Ladbroke Grove
HMS Belfast	110	70	n/a	144	250	228	6	London Bridge
Queen's House Greenwich	100	25	50	120	150	141	1	Cutty Sark (DLR)
ArcelorMittal Orbit	100	50	n/a	120	250	490	3	Stratford
National Theatre	100	48	n/a	80	150	100	5	Waterloo
Somerset House	100	36	n/a	550	1500	500	10+	Temple
Royal Academy of Arts	80	50	n/a	250	800	n/a	n/a	Piccadilly Circus
English Heritage Kenwood House	80	n/a	n/a	80	100	n/a	1	Archway
Tower Bridge Exhibition	70	n/a	n/a	120	250	366	4	Tower Hill
English Heritage - Rangers House	60	30	n/a	60	80	n/a	1	Blackheath (National Rail)
The Geffrye Museum	50	n/a	48	70	250	n/a	3	Hoxton (OV)

(m - feet conversion 1m = 3.280ft)

T - Theatre CA - Cabaret CL - Classroom B - Banquet R - Reception (NR) - National Rail (OV) - Overground (DLR) - Docklands Light Railway

Attraction Venues

Venue	T	CA	CL	B	R	Max Sqm	Rooms for hire	Closest tube
Kew Palace and Royal Kitchens	40	n/a	n/a	30	40	52	2	Kew Bridge
The Household Cavalry Museum	40	20	N/A	40	100	170	2	Charing Cross
English Heritage Wellington Arch	40	22	n/a	36	60	n/a	1	Hyde Park Corner
Coca Cola London Eye	n/a	n/a	n/a	8	25	30	32 Capsules	Waterloo
Cutty Sark Greenwich	n/a	n/a	n/a	270	450	n/a	1	Cutty Sark (DLR)
Hollywood Bowl	n/a	n/a	n/a	n/a	700	n/a	1	North Greenwich
Madame Tussauds London	n/a	n/a	n/a	380	1000	n/a	5 themed areas	Baker Street
National Army Museum	n/a	n/a	n/a	350	700	602	7	Sloane Square
Peter Harrison Planetarium	n/a	n/a	n/a	110	150	n/a	2	Cutty Sark (DLR)
Postal Museum	n/a	n/a	n/a	150	275	236	2	Farringdon
Royal Hospital Chelsea	n/a	n/a	n/a	270	400	n/a	6	Sloane Square
Royal Observatory Greenwich	n/a	n/a	n/a	110	150	112	2	Cutty Sark (DLR)
SEA LIFE London Aquarium	n/a	n/a	n/a	200	500	n/a	2	Waterloo
The Golden Hinde	n/a	n/a	n/a	100	100	n/a	3	London Bridge
The London Dungeon	n/a	n/a	n/a	150	150	n/a	2	Waterloo
The Wallace Collection	n/a	n/a	n/a	160	300	1034	6	Bond Street
Victoria and Albert Museum	n/a	300	n/a	400	600	629	10	South Kensington
Westminster Abbey	400-summer season, 50	240-summer season, 80	32	280	1000-summer season, 400	College garden	6	Westminster

Venue hire mainly available in the evenings, daytime hire is subject to availability as these are public attractions

(m - feet conversion 1m = 3.280ft)

T - Theatre CA - Cabaret CL - Classroom B - Banquet R - Reception (NR) - National Rail (OV) - Overground (DLR) - Docklands Light Railway

Academic Venues

Venue	T	CA	CL	B	R	Max Sqm	Rooms for hire	Closest tube
London School of Economics and Political Science (LSE)	999	n/a	120	n/a	80	n/a	Various	Holborn
Queen Mary University of London	774	200	250	200	1000	n/a	37	Mile End
Imperial College London	740	168	90	350	600	572	Various	South Kensington
Loughborough University	175	60	175	175	175	n/a	Various	Stratford

Please note, these venues are primarily used for teaching in termtime and therefore venue hire is subject to availability

Riverboats

Boats	Seated	Reception	Seated Dinner	Location
Thames River Services and Circular Cruises Westminster	524	500	250	Optional
MBNA Thames Clippers	220	220	220	Optional
City Cruises	200	595	200	Optional
RS Hispaniola	120	180	120	Victoria Embankment

Hotels With Meeting Spaces

Hotel	T	CA	CL	B	R	Max Sqm	Meeting Rooms	Bed Rooms	Closest Tube
InterContinental London - The O2	3000	1680	1800	2400	3000	3012.86	20	453	North Greenwich
Hilton London Metropole	1700	624	650	1080	1600	1062	42	1059	Edgware Road
Park Plaza Westminster Bridge	1400	720	700	1350	1500	1167	31	1019	Lambeth North
Grosvenor House A JW Marriott Hotel	1300	1000	700	2000	2000	1779	31	420	Marble Arch
Royal Lancaster London	1200	640	552	1200	1680	1263	15	411	Lancaster Gate
London Hilton on Park Lane	1000	600	550	900	1250	937	13	453	Hyde Park Corner
Novotel London West	1000	n/a	540	1200	n/a	1726	33	630	Hammersmith
London Marriott Hotel Grosvenor Square	900	432	500	648	1000	763	14	217	Bond Street
Hilton London Wembley	700	500	450	600	800	693	14	361	Wembley Park
InterContinental London Park Lane	700	259	252	750	1000	841	13	454	Hyde Park Corner
Park Plaza Riverbank London	650	432	450	540	660	639	23	489	Vauxhall
Hilton London Bankside	600	n/a	350	600	700	891	11	292	Southwark
Radisson Blu Portman	600	200	280	550	550	632	12	272	Marble Arch
The Landmark London	568	264	364	432	750	610	13	300	Marylebone
Park Plaza Victoria London	550	280	260	400	750	607	15	299	Victoria
Royal Garden Hotel	550	280	320	430	800	939	10	394	High Street Kensington
The Tower	550	250	320	500	570	551	19	801	Tower Hill
Millennium Gloucester Hotel & Conference Centre	500	288	300	480	650	420	12	610	Gloucester Road

(m - feet conversion 1m = 3.280ft)

T - Theatre CA - Cabaret CL - Classroom B - Banquet R - Reception (NR) - National Rail (OV) - Overground (DLR) - Docklands Light Railway

Hotels With Meeting Spaces

Hotel	T	CA	CL	B	R	Max Sqm	Meeting Rooms	Bed Rooms	Closest Tube
Sheraton Grand London Park Lane	500	240	300	420	1200	990	5	302	Green Park
Clayton Crown	460	200	200	300	380	390.6	4	152	Cricklewood (National Rail)
Pullman London St Pancras	446	200	220	240	450	552	17	312	Kings Cross and St Pancras
Rosewood London	430	200	285	340	555	397	12	306	Holborn
Amba Hotel Marble Arch	400	200	200	300	500	313	13	692	Marble Arch
Hilton London Syon Park	400	n/a	300	400	700	465	15	137	Syon Lane
Hilton London Tower Bridge	400	n/a	220	300	450	334	10	246	London Bridge
The Dorchester	400	240	300	510	1000	957	10	250	Hyde Park Corner
Hilton London Canary Wharf	380	n/a	220	270	400	337	8	282	Canary Wharf
Principal Hotel	377	161	160	260	450	360	9	334	Russell Square
The Langham London	375	136	154	250	375	364	16	380	Oxford Circus
Hilton London Paddington	350	150	160	280	400	282.11	18	419	Paddington Station
Clayton Hotel Chiswick	330	200	200	330	330	429	10	227	Gunnelsbury
St Pancras Renaissance London Hotel	325	240	220	280	575	453	10	245	Kings Cross and St Pancras
Copthorne Tara Hotel London Kensington	320	120	120	332	500	410	7	833	High Street Kensington
The Bloomsbury Hotel	320	160	160	180	250	266	13	153	Tottenham Court Road
Radisson Blu Edwardian, Bloomsbury Street	300	120	130	220	300	232	9	174	Tottenham Court Road
The Lensbury Hotel	300	185	50	220	260	300	30	171	Teddington (National Rail)
The Royal Horseguards	300	170	180	228	350	214	13	281	Embankment
The Waldorf Hilton	300	150	150	350	700	491	9	298	Covent Garden
London Marriott Hotel Regent's Park	300	120	150	300	300	311	10	308	Swiss Cottage
London Marriott West India Quay	290	102	132	160	290	230	19	302	Canary Wharf
Claridge's	260	120	150	240	500	234	7	203	Bond Street
The May Fair Hotel	260	120	140	220	370	336	17	437	Green Park
Corinthia Hotel London	250	120	120	180	400	218	8	294	Embankment
Hilton London Olympia	250	n/a	150	300	350	491	10	405	Olympia London (OV)
Hyatt Regency London- The Churchill	250	144	180	240	350	242	10	453	Marble Arch
Mandarin Oriental Hyde Park	250	125	120	250	400	244	5	194	Knightsbridge
ME London	250	170	153	253	300	500	7	157	Temple
Radisson Blu Edwardian, New Providence Wharf	250	150	130	160	200	210	8	169	Canary Wharf
The Berkeley	250	140	133	250	600	311	6	210	Hyde Park Corner
Le Meridien Piccadilly	230	104	120	200	245	168	7	280	Piccadilly Circus
Strand Palace Hotel	230	84	116	170	250	199	10	785	Covent Garden

(m - feet conversion 1m = 3.280ft)

T - Theatre CA - Cabaret CL - Classroom B - Banquet R - Reception (NR) - National Rail (OV) - Overground (DLR) - Docklands Light Railway

Hotels With Meeting Spaces

Hotel	T	CA	CL	B	R	Max Sqm	Meeting Rooms	Bed Rooms	Closest Tube
DoubleTree by Hilton Hotel London - Tower of London	220	120	84	150	250	198	23	583	Tower Hill
DoubleTree by Hilton Hotel London - WestEnd	220	80	82	110	200	285	17	215	Holborn
ibis STYLES London Excel	218	118	118	136	150	203	4	305	Custom house (DLR)
Hilton London Kensington	200	n/a	120	300	400	528	14	601	Shepherd's Bush
DoubleTree by Hilton Hotel London - Westminster	180	96	70	130	200	198	11	460	Westminster
Melia White House	180	77	100	100	200	149	9	693	Regents Park
Amba Hotel Charing Cross	170	100	130	150	200	174	9	239	Charing Cross
DoubleTree by Hilton Hotel London - Victoria	160	100	100	120	200	216	8	225	Victoria
Hotel Café Royal London	160	63	60	120	230	176	6	160	Piccadilly Circus
London Marriott Hotel Marble Arch	150	72	100	120	200	171	7	240	Marble Arch
The Bankside Hotel	140	70	70	112	180	354	4	161	Soutwark
Thistle City Barbican	130	100	70	144	200	172	13	463	Old Street
Conrad London St James	120	n/a	60	220	300	270	7	256	St James Park
The Connaught	120	80	70	120	200	151	7	121	Bond Street
The Grosvenor	120	72	70	100	150	8.21	9	345	Victoria
Shangri-La Hotel At The Shard London	120	64	48	100	140	155	3	202	London Bridge
Hilton London Green Park	110	n/a	60	n/a	110	117.2	4	163	Green Park
Radisson Blu Edwardian, Grafton	110	64	50	100	150	102.7	11	330	Warren Street
Radisson Blu Edwardian, Kenilworth	110	64	48	90	120	137.3	6	186	Tottenham Court Road
Sunborn London	110	70	70	200	250	170	6	131	Custom House (DLR)
Radisson Blu Edwardian, Hampshire	100	50	48	72	120	108	6	127	Leicester Square
Radisson Blu Edwardian, Vanderbilt	100	54	54	90	120	96.6	12	215	Gloucester Road
Thistle Euston	100	54	45	60	80	80	6	362	Euston
Nobu Shoreditch	100	80	60	120	120	178	1	148	Old Street
London Marriott Hotel County Hall	80	40	40	60	90	262	12	200	Westminster
The Park Tower Knightsbridge	80	30	50	120	150	167	5	280	Knightsbridge
Thistle Holborn, The Kingsley	80	40	40	60	100	87	7	129	Holborn
The Athenaeum	80	35	25	60	80	8.09	3	168	Green Park
H10 London Waterloo	80	35	40	120	240	269	4	177	Waterloo
Cliveden	80	24	n/a	60	80	n/a	6	45	Taplow (National Rail)
The Good Hotel	70	n/a	22	30	120	65	4	148	Royal Victoria
Dorsett London City	60	42	40	48	70	52	4	267	Aldgate
The Marylebone Hotel	60	36	50	48	80	96	6	257	Baker Street
Radisson Blu Edwardian, Mercer Street	60	32	27	40	60	52	6	137	Covent Garden

(m - feet conversion 1m = 3.280ft)

T - Theatre CA - Cabaret CL - Classroom B - Banquet R - Reception (NR) - National Rail (OV) - Overground (DLR) - Docklands Light Railway

Hotels With Meeting Spaces

Hotel	T	CA	CL	B	R	Max Sqm	Meeting Rooms	Bed Rooms	Closest Tube
W London- Leicester Square	56	35	n/a	50	80	84.2	3	192	Leicester Square
One Aldwych	50	28	n/a	50	80	86	4	105	Covent Garden
The Goring	50	20	n/a	44	100	85	4	69	Victoria
The Stafford London	50	18	16	44	70	61	5	105	Green Park
Thistle Kensington Gardens	45	24	30	40	150	52	3	175	Queensway
The Trafalgar	40	22	n/a	n/a	50	4.57	3	129	Charing Cross
Aloft London Excel	30	12	n/a	n/a	40	47	6	252	Prince Regent (DLR)
DoubleTree by Hilton Hotel London- Excel	30	n/a	16	n/a	40	55.7	2	287	Prince Regent (DLR)
Hilton London Hyde Park	30	n/a	14	n/a	n/a	4.5	1	136	Queensway
Thistle Bloomsbury Park	30	10	20	30	70	10.13	1	95	Russell Square
The Arch London	25	n/a	n/a	40	50	65	3	82	Marble Arch
Hilton London Angel Islington	n/a	n/a	n/a	82	140	n/a	1	188	Angel
No. 11 Cadogan Gardens	n/a	n/a	n/a	60	60	n/a	7	56	Sloane Square
Radisson Blu Edwardian, Sussex	n/a	n/a	n/a	12	n/a	15	2	101	Marble Arch
The Hari	n/a	n/a	n/a	24	180	200	2	85	Knightsbridge
The Stafford London	50	18	16	44	70	61	5	105	Green Park
Thistle Kensington Gardens	45	24	30	40	150	52	3	175	Queensway
Novotel London Waterloo	40	n/a	24	24	n/a	50	6	187	Waterloo
The Trafalgar	40	22	n/a	n/a	50	4.57	3	129	Charing Cross
Hampton by Hilton Waterloo	40	10	20	110	150	17.65	4	297	Waterloo
K+K Hotel George	37	25	23	80	150	90	4	154	Earls Court
Aloft London Excel	30	12	n/a	n/a	40	47	6	252	Prince Regent (DLR)
Hilton London Hyde Park	30	n/a	14	n/a	n/a	4.5	1	136	Queensway
Saint Georges Hotel	30	n/a	n/a	100	170	40	2	95	Oxford Circus
Thistle Bloomsbury Park	30	10	20	30	70	10.13	1	95	Russell Square
Thistle Hyde Park	30	16	20	25	40	3.52	3	54	Lancaster Gate
The Arch London	25	n/a	n/a	40	50	65	3	82	Marble Arch
CitizenM Tower of London	n/a	n/a	n/a	24	n/a	60	8	370	Tower Hill
Hampton by Hilton Docklands	n/a	n/a	n/a	10	n/a	276	2	209	Royal Albert
Hilton London Angel Islington	n/a	n/a	n/a	82	140	n/a	1	188	Angel
No. 11 Cadogan Gardens	n/a	n/a	n/a	60	60	n/a	7	56	Sloane Square
Radisson Blu Edwardian, Sussex	n/a	n/a	n/a	12	n/a	15	2	101	Marble Arch
The Hari	n/a	n/a	n/a	24	180	200	2	85	Knightsbridge

(m - feet conversion 1m = 3.280ft)

T - Theatre CA - Cabaret CL - Classroom B - Banquet R - Reception (NR) - National Rail (OV) - Overground (DLR) - Docklands Light Railway

Accommodation Only

Property	Total bedrooms, suites or apartments	Closest Tube
Corus Hotel Hyde Park	387	Lancaster Gate
Imperial College London: Summer Accommodation	2000	Across West London
LSE Bankside House (Summer Only)	617	Southwark
LSE High Holborn Residence (Summer Only)	447	Holborn
DoubleTree by Hilton Hotel London- Docklands Riverside	378	Canada Water
LSE Northumberland House (Summer Only)	340	Charing Cross
LSE Rosebery Hall (Summer Only)	339	Angel
University of London: International Hall	300	Russell Square
Palmers Lodge	270	Willesden Green
DoubleTree by Hilton Hotel London- Excel	260	Prince Regent
LSE Grosvenor House (Summer Only)	227	Covent Garden
LSE Passfield Hall (Summer Only)	226	Euston Square
The Bailey's London	210	Gloucester Road
Apex Temple Court	204	London Blackfriars
University of London: Garden Halls	200	Kings Cross St Pancras
University of London: Lillian Penson Hall	200	Paddington
Qbic Hotel City	184	Aldgate East
LSE Carr-Saunders Hall (Summer Only)	160	Goodge Street
Cheval Three Quays	159	Tower Hill
University of London: College Halls	150	Goodge Street
Radisson Blu Edwardian, Berkshire	149	Bond Street
University of London: Nutford House	120	Edgware Road
University of London: Connaught Hall	100	Goodge Street
The Lalit	70	London Bridge
The Westbridge Hotel	80	Stratford
Cheval Harrington Court	47	South Kensington
Cheval Hyde Park	16	High Street Kensington

Homestay

Property	Total Bedrooms, Suites or Apartments	Closest Tube
airbnb	Various	Various
Coach House London Vacation Rentals	38 properties with over 86 bedrooms	Various
Happy Homes	Various	Various
Merino Hospitality	9 apartments, various sizes	Various

(m - feet conversion 1m = 3.280ft)

T - Theatre CA - Cabaret CL - Classroom B - Banquet R - Reception (NR) - National Rail (OV) - Overground (DLR) - Docklands Light Railway

Airport Hotels

Hotel	T	CA	CL	B	R	Max Sqm	Meeting Rooms	Bed Rooms	Closest Tube
Hilton London Heathrow Airport Terminal 5	1200	480	430	816	1200	840	14	350	Heathrow Terminal 5
Radisson Blu Edwardian, Heathrow	700	400	350	550	700	502	32	459	Heathrow Terminal 123
Park Inn Heathrow	700	384	250	600	800	685	41	895	Hatton Cross
Hilton London Heathrow Airport Terminal 4	250	115	150	170	300	201.78	30	398	Heathrow Terminal 4
DoubleTree by Hilton Hotel London- Heathrow Airport	70	50	30	50	70	n/a	6	200	Heathrow Terminal 123
DoubleTree by Hilton Hotel London- Heathrow Airport	70	50	30	50	70	n/a	6	200	Heathrow Terminal 123

Professional Conference Organisers (PCOs)

Professional Conference Organisers (PCOs) collaborate with National and International Associations to help them deliver their conferences successfully. They provide end to end planning and logistics especially financial management and delegate and sponsorship acquisition.

Company
B Network
Congress Bookers (IAPCO members)
Congrex Switzerland (IAPCO members)
Conference Partners International (IAPCO members)
MCI Group UK Ltd. (IAPCO members)
TFI Group (IAPCO members)
BCD Meetings & Events

(m - feet conversion 1m = 3.280ft)

T - Theatre CA - Cabaret CL - Classroom B - Banquet R - Reception (NR) - National Rail (OV) - Overground (DLR) - Docklands Light Railway

Destination Management Companies (DMCs)

Specialise in the delivery of events, tours, staffing and transport, utilising extensive local knowledge, expertise and resources.

Company	Description
2B-UK	North America and Australia Market specialist
AC Luxe	Destination management for UK, Ireland, Paris & Amsterdam
AC Travel Group	Scandinavian/Nordic market specialists
All In One Tours Ltd	Specialise in german groups
Ampersand Travel	Asia speciality
Atlas Travel Solutions	All markets
Ben Thompson Events Ltd	Sporting corporate hospitality
Blue Ribbon Events Ltd	Large groups, creative
Brook Green UK DMC	Belgian and Dutch speciality
China Britain Travel Group	Chinese specialist inbound groups
EC Travel	Australia and North America speciality
E-Voyages	Specialise in French groups
Goldbrooke DMC	All international markets
Kuoni Travel Ltd - Destination Management	Offices in other parts of the world so can help with anything
Liberty International GB Ltd	Italian speciality, but also have offices in Europe, Brazil and Middle East
London DMC	European & US, UK clients
Pacific World DMC	Global DMC with fresh ideas
Principal. London DMC	Corporate EU, North American and Asian market
Smoozy	European business
Spectra	90% North American business
Sterling Travel Ltd	European and North American business
The Competitive Edge	All international markets
Wedgewood Britain	Offices all over the world, Europe, Africa, Brazil

Event Management Companies (EMCs)

Specialise in the creation and delivery of all aspects of your event, including strategic marketing, budgeting, logistics, and branding.

Company	Description
BCD Meetings and Incentives	full-service meetings management and event planning capabilities
Eclipse Presentation	Creative technical event production agency
JL Events Management	EMC that also provides staffing solutions to events
Sapphire Private	Exclusive multi service event management agency
Worldspan	Global event management and creative communications

(m - feet conversion 1m = 3.280ft)

T - Theatre CA - Cabaret CL - Classroom B - Banquet R - Reception (NR) - National Rail (OV) - Overground (DLR) - Docklands Light Railway

Delegate Management Registration

Company	Description
Grass Roots	Specialists in delegate management, event registration and strategic meetings management

Group Housing Providers

Company
Global Congress Accommodation
BCD Meetings & Events

Service Providers

Our service provider partners offer a range of additional services for events.

Company	Description
Aggreko	Generator and chiller hire
AKA promotions Ltd	Global entertainment marketing & advertising agency for the live entertainment, arts and culture
Blue Badge Guides London	Association of London guides
Blick Rothenberg	Tax refund for events
Conference Interpreters UK (Members of AIIIC)	Translation Services
DisabledGo	Access information for disabled people in the UK
Encore Tickets Ltd	Event ticket seller
Hiscox Event Insurance	Insurance Providers
Made Travel	Tourism Marketing, Representation and PR Company
Maxima Training Development Ltd	Training
Moore People Event Staffing	Hosting and Support Staff
Nannybag	Creative luggage storage solution
Open Exhibitions	Exhibition stand design and build contractor
Q- Park	City parking throughout the UK
Rod Edwards Photography	Specialist in 360 degree photography
SMG Insight	Sport and sponsorship research
Sternberg Clarke	Entertainment Provider
The Leisure Pass Group	Sightseeing and tourism technology specialist, which develops and manages The London Pass
SMG Insight	Sport and sponsorship research
Sternberg Clarke	Entertainment Provider
The Leisure Pass Group	Sightseeing and tourism technology specialist, which develops and manages The London Pass

(m - feet conversion 1m = 3.280ft)

T - Theatre CA - Cabaret CL - Classroom B - Banquet R - Reception (NR) - National Rail (OV) - Overground (DLR) - Docklands Light Railway

Caterers

Company
Berkeley Catering
By Word of Mouth
Moving Venue

Transport

Company	Description
Carey	Chauffeur company
Clarkes of London	A coach company with a fleet of 130 vehicles across a range of coaches
EG Chauffeurs	Chauffeur Services
Eurostar International Ltd	High speed passenger train from London to Paris and Brussels
Excess Baggage	Baggage shipping and storage services
Global Transfer Services	Chauffeur company providing airport transfers
GOGO Charters	Coach hire company
Heathrow Express	London to Airport Express Train
Little's Chauffeur Drive	Chauffeur driven cars and limousines
Luggage Hero	Luggage storage
MyDriver	Chauffeur driven cars and limousines
Peter Carol Prestige Coaching	Luxury coaches for business travel
Serco Caledonian Sleepers	Overnight to Scotland train travel
Southeastern Railway	Passenger trains in the South East
Southwestern Railway	Passenger trains in the South West
Stasher	Luggage storage company
Stansted Express	London to Airport Express Train
Welcome Pickups	A welcoming service which offers pick up from the airport by local experts

Group Activities

Activity	Description	Max Group Size	Location
All Star Lanes - Shepherds Bush	Bowling , Great Cocktails and Homemade Food	250	Shepherds Bush
B Bakery	Cafe and Afternoon Tea - Bus	500	Various
City Academy	Team Building, Event animation, Learning and Development	n/a	Various
Cookery School	Guided group cooking	50	Oxford Circus
Go Ape Alexandra Palace	Interactive Forest Adventure Park	300	Wood Green
Go Ape Battersea	Interactive Forest Adventure Park	300	Battersea Park
Go Ape Trent Park	Interactive Forest Adventure Park	80	Uxbridge
Hollywood Bowl	Bowling lanes with a difference	800	North Greenwich
Foxtrail	Code breaking hunt for the Fox around London's hidden places	12	Various
Lee Valley White Water Centre	White water rafting, kayaking and canoeing	54	Waltham Cross
London Bridge Experience	Immersive theatrical experience	28	London Bridge
London Stadium	Team Building and Interactive Tours	Various	Stratford
Royal Shakespeare Company	Theatre	n/a	Multi locations
small car BIG CITY	Classic Mini Cooper Hire in London for events	24	Trafalgar Square
Thames Jets	Speed boats on the river	12	Optional
Thames RIB Experience	Speed boats on the river	12	Waterloo/Tower Hill
Thames Rockets	Speed boats on the river	12	Optional
Twizzy Tour	Self-drive tour in an electric Renault Twizy	2	Optional
Up at the O2	Climb the O2	16	North Greenwich

(m - feet conversion 1m = 3.280ft)

T - Theatre CA - Cabaret CL - Classroom B - Banquet R - Reception (NR) - National Rail (OV) - Overground (DLR) - Docklands Light Railway

Tours

Company	Max group size	Other Info/Services
Bank of England Museum	Various	Presentation for pre-booked groups
Beefeater Distillery	15 pax per tour, tours every 15 minutes	
Big Bus Tours	100	
Brit Movie Tours	250	
British Tours	more than 6pax in minibus	Private London Tours
Buckingham Palace	Various tour options available	reduced admission for groups of 15+
Fat Tire Tours	15 per guide, 150 overall group size maximum	
Golden Tours	coach and leisure/entertainment tours	
Institution of Civil Engineers	Various	Engineering exhibitions
London Architecture Foundation Walking Tours	15pax per tour	walking tours by local architects, dedicated urbanists, former politicians and Londoners
London Stadium Tour	Tour of the London (Olympic) Stadium	Multimedia and match day tours
London Walks	35 pax per guide	
National Theatre Tours	20 per group	
Sandeman's New London Ltd	40 per guide	
Society of London Theatre (SOLT)	30 per group	theatreland walking tours
The London Helicopter	5 pax per helicopter	
The Original London Sightseeing Tour	96 pax per bus	
Wembley Stadium Tour	various	15% discount for groups of 25+
Wimbledon Lawn Tennis Museum	45 per guide	
Windsor Castle	15 per group	
Strawberry Tours	Various options available	Walking Tours around London
The London Helicopter	5 pax per helicopter	
The Original London Sightseeing Tour	96 pax per bus	
Wembley Stadium Tour	various	15% discount for groups of 25+
Wimbledon Lawn Tennis Museum	45 per guide	
Windsor Castle	15 per group	

(m - feet conversion 1m = 3.280ft)

T - Theatre CA - Cabaret CL - Classroom B - Banquet R - Reception (NR) - National Rail (OV) - Overground (DLR) - Docklands Light Railway

Restaurants

Venue	Exclusive hire dinner	Reception	Private dining	Closest Tube
Bunga Bunga	400	400	30	Covent Garden
Planet Hollywood	355	800	n/a	Piccadilly Circus
Hard Rock Cafe	230	470	120	Hyde Park Corner
Fortnum and Mason	220	300	60	Green Park
Cafe in the Crypt	200	350	n/a	Charing Cross
Cinnamon Kitchen & Anise	140	250	16	Liverpool Street
Cinnamon Club	130	300	60	St James Park
OXO Tower Restaurant	150	250	120	Southwark
OXO Tower Brasserie	150	350	60	Southwark
Masala Zone Bayswater	50	n/a	36	Royal Oak
Masala Zone Camden Town	50	n/a	30	Camden Town
Masala Zone Covent Garden	50	n/a	55	Covent Garden
Masala Zone Islington	50	n/a	20	Angel
Cinnamon Soho	40	150	35	Oxford Circus
OXO Tower Bar	32	75	32	Southwark
Masala Zone Soho	24	n/a	24	Oxford Circus
Masala Zone Covent Garden	50	n/a	55	Covent Garden
Masala Zone Islington	50	n/a	20	Angel
Boisdale Mayfair	45	n/a	22	Marble Arch
Cinnamon Soho	40	150	35	Oxford Circus
Masala Zone Soho	24	n/a	24	Oxford Circus



The Tower Room

A room with a view

Located on the 6th Floor at 2 More London Riverside, The Tower Room offers stunning views and the versatility to accommodate a variety of events from conference, theatre and cabaret style meetings to corporate events, receptions, product launches and workshops.

With 180 degree views over the River Thames, the Tower of London and iconic Tower Bridge, the room features natural daylight complete with blackout blinds, and is fully equipped with high tech AV equipment and Wi-Fi.

An interactive video wall provides cutting edge technology, whilst creating a collaborative working environment. Whether you're brainstorming strategies with digital post it stickers, or simply displaying your presentation on a giant screen, it will not fail to impress.

A list of preferred caterers offer a range of options from breakfast, working lunches, evening canapé receptions and seated dinners.

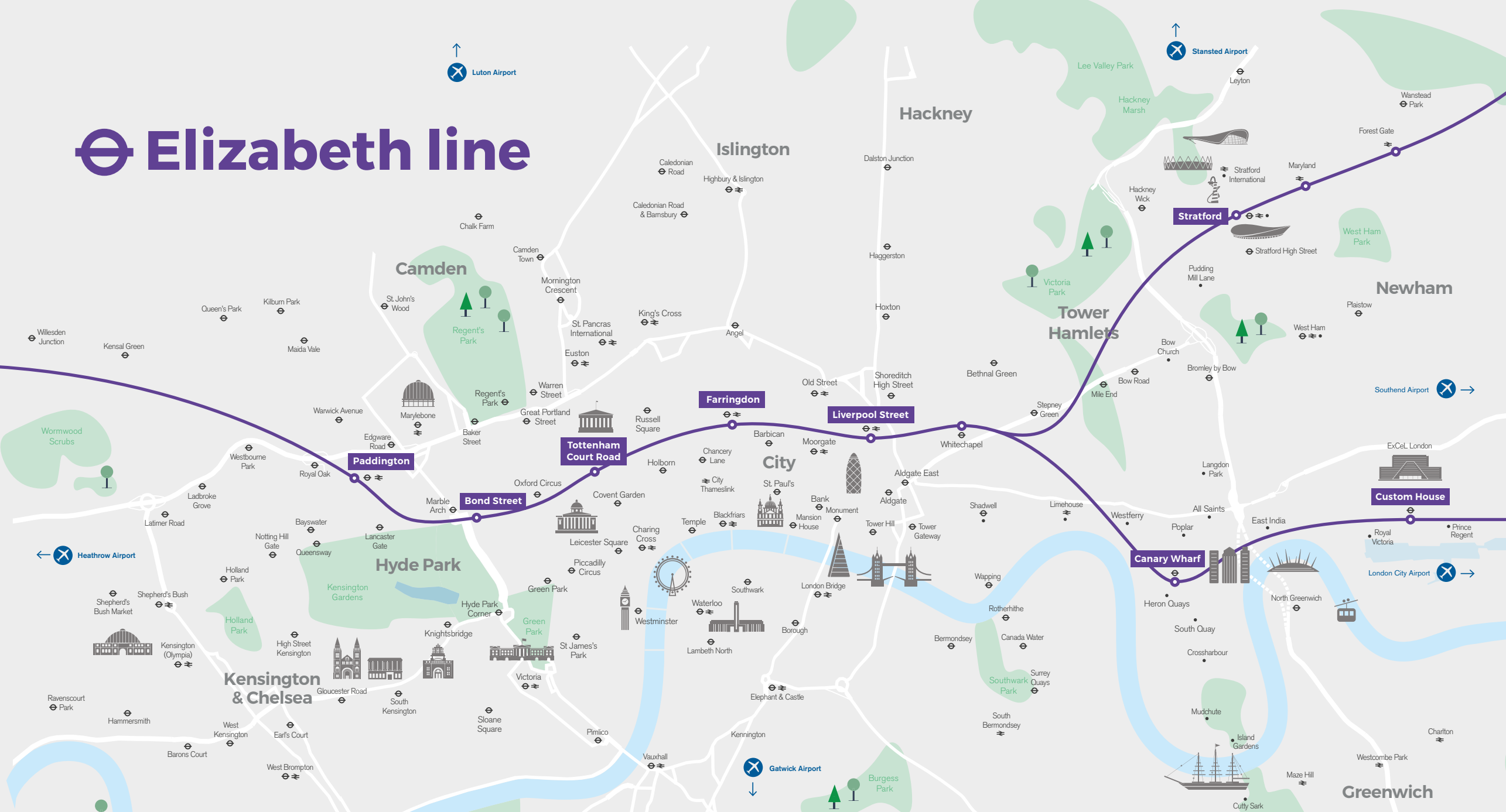


Theatre 80	Cabaret 45
Classroom 36	Dinner 22
Reception 80	Boardroom 24
U shape 24	Hollow Square 32
Max. meeting space 86m ²	

For more information email
conventionbureau@londonandpartners.com
+44 (0) 20 7234 5833



Elizabeth line



Heathrow
39 hotels, 13,144 bedrooms
Connections :
Piccadilly line

Paddington
20 mins from Heathrow
12 hotels, 3,577 bedrooms
Connections :
Circle & District line
Bakerloo Line
Hammersmith and City line

Bond Street
23 mins from Heathrow
39 hotels, 8,500 bedrooms
Connections :
Central line
Jubilee line

Tottenham Court Road
28 mins from Heathrow
69 hotels, 12,455 bedrooms
Connections :
Northern line
Central line

Farringdon
31 mins from Heathrow
22 hotels, 2,602 bedrooms
Connections :
Circle line
Hammersmith and City line
Metropolitan line

Liverpool Street
33 mins from Heathrow
28 hotels, 6,463 bedrooms
Connections :
Central line
Circle line
Hammersmith and City line
Northern line
Overground

Canary Wharf
40 mins from Heathrow
13 hotels, 2,679 bedrooms
Connections :
DLR
Jubilee line

Stratford
45 mins from Heathrow
3 hotels, 644 bedrooms
Connections :
Central line
Jubilee line
DLR
Overground

Custom House
43 mins from Heathrow
13 hotels, 2,694 bedrooms
Connections :
DLR

The Elizabeth line: Changing the face of London

From Autumn 2019, the Elizabeth line will begin services from Reading, Heathrow and Paddington in the west through central London to Shenfield and Abbey Wood in the east. By the end of the year, delegates travelling from Heathrow will only take 28 minutes to get to London's West End, 34 minutes to reach the City of London and just 44 minutes to travel to the capital's biggest event venues, ExCeL London and O2, located in the east of London.

Ten new stations are being built as part of the Crossrail project. Paddington, Bond Street, Tottenham Court Road and Farringdon will all be completely overhauled to cater for the 200 million passengers expected to use the Elizabeth line each year. Multiple entrances and ticket halls, more space below ground and straightforward access to the rest of the transport network will make travelling with groups an even easier experience.

With the new Elizabeth line, London has some of the most accessible events venues in the world.

The Elizabeth line in numbers



200
million passengers
a year



10%
increase in central
London's rail capacity



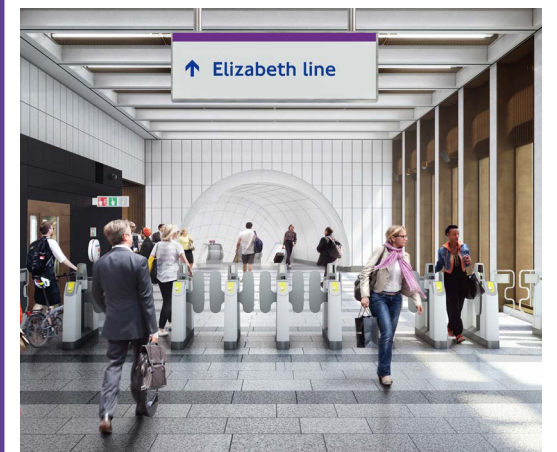
Improved wayfinding
for visitors to London
with new signage,
screens and help
points across the line



"The Elizabeth line is going to increase transport choice for passengers and reduce journey times. For example, when it's fully operational, it will only take 26 minutes to travel from Heathrow to the West End, 34 minutes to the City of London and 40 minutes to Canary Wharf."

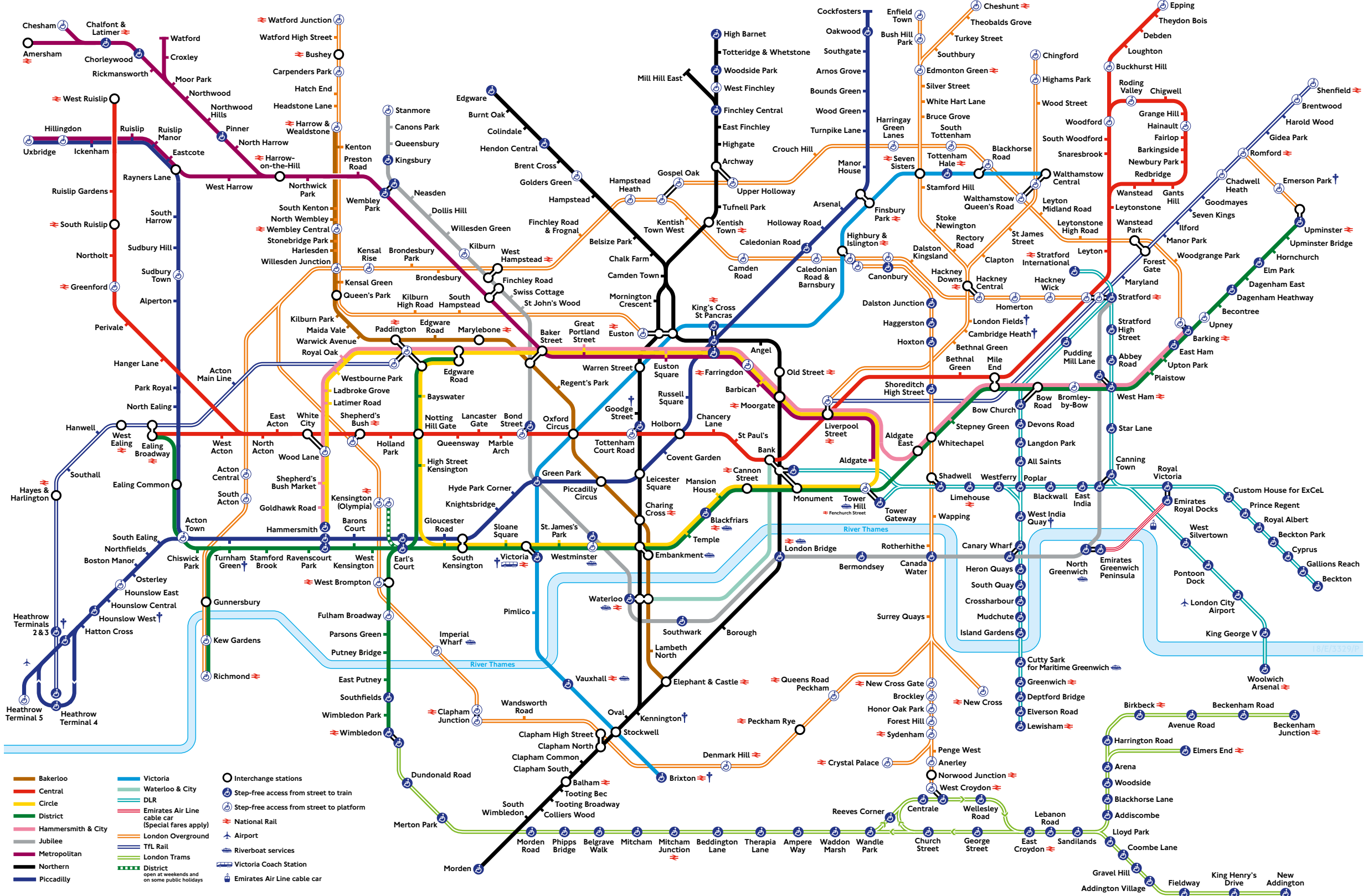
Customers are really going to benefit from the new trains which will be 200m long and able to carry 1,500 passengers at a time. The air conditioning and mix of seating will make journeys more comfortable."

Caroline Metcalf,
Project Manager, Bond Street station



For more information on Crossrail or travel information for delegates coming to London, please visit:

conventionbureau.london/transport



- Bakerloo
- Central
- Circle
- District
- Hammersmith & City
- Jubilee
- Metropolitan
- Northern
- Piccadilly
- Victoria
- Waterloo & City
- DLR
- Emirates Air Line cable car (Special fares apply)
- London Overground
- TFL Rail
- London Trams
- - - District open at weekends and on some public holidays
- Emirates Air Line cable car
- Interchange stations
- Step-free access from street to train
- Step-free access from street to platform
- National Rail
- Airport
- Riverboat services
- Victoria Coach Station
- Emirates Air Line cable car

† Services or access at these stations are subject to variation. Please search 'TfL stations' for full details.





ICONIC & UNIQUE VENUES IN THE HEART OF CENTRAL LONDON



YOUR EVENT, OUR VENUE merlineventslondon.com 020 7487 0224



COCA-COLA and the CONTOUR BOTTLE are registered trademarks of The Coca-Cola Company. © 2018 Dreamworks Animation L.L.C