

SIGHTS • ARTS • SHOPPING • EATING • ENTERTAINMENT • MAPS

LONDON

PLANNER

THE FREE OFFICIAL MONTHLY GUIDE
APRIL 19 • LONDONPLANNER.COM

HOP into the Capital

Easter egg hunts, sweet shops and chocolate tours

STARS IN YOUR EYES

From Kelsey Grammer to Sally Field

ON YOUR MARKS

Where to see the London Marathon



PLUS
Rooftop bars
Oxford guide
Insta-worthy
toilets



VisitBritain

FIND YOUR

GREAT

BRITAIN



VISITLONDON.COM

NEW TICKETS
RELEASED



HAMILTON

FOR FULL TICKET INFO VISIT HAMILTONMUSICAL.COM

VICTORIA PALACE THEATRE

A DELFONT MACKINTOSH THEATRE

The Mayor's letter



Welcome to London this April

There's a lot going on in Trafalgar Square this month. On Good Friday (19 Apr), gather in the square to see *The Passion of Jesus*, a free show at noon and 3.15pm which brings the Easter story to life. In the same place, the Feast of St George paints the town red and white on 20 Apr in honour of England's patron saint. With a knight school, food and culture, this free festival celebrates England in all its vibrancy and diversity. Finally, on 27 Apr, join our Sikh community for Vaisakhi in Trafalgar Square, where visitors can enjoy traditional music and stories.

Waltham Forest, 2019 London Borough of Culture, offers a great chance for families to experience theatrical tin-making workshops. Head to Leyton Sports Ground, where you can explore the metalworking legacy of Waltham Forest.

London's parks are always beautiful, but they really come into their own in the spring. If the sun is shining, enjoy a picnic in one of our many green spaces and make the most of the season.

Sadiq Khan

Mayor of London



Twitter: @LondonPlanner
Facebook: LondonPlannerMag
Instagram: LondonPlanner
YouTube: www.youtube.com/londonplanner



VISITLONDON.COM

OFFICIAL VISITOR GUIDE

© LITTLESTAR

mamma-mia.com | NOVELLO THEATRE | ALDWYCH, LONDON WC2B 4LD
A DELFONT MACKINTOSH THEATRE



'IT IS OUT OF THIS WORLD,
IT'S MAGIC, AND IT'S A HIT'

THE TIMES



HARRY POTTER

AND THE
CURSED CHILD

— PARTS ONE AND TWO —

BASED ON AN ORIGINAL NEW STORY BY
J.K. ROWLING, JACK THORNE & JOHN TIFFANY
A NEW PLAY BY **JACK THORNE**

CHECK DAILY FOR LATE-RELEASE TICKETS

PALACE THEATRE, LONDON

www.HarryPotterThePlay.com

TM & © HPTP. Harry Potter – WBEI

Contents

- 03 Mayor's welcome**
Sadiq Khan welcomes you to London
- 06 Top 10 free attractions**
The most popular places to visit
- 08 The sweet side of London**
As Easter takes place, enjoy egg hunts, chocolate shops and tasting tours
- 14 London loos**
From Instagrammable lavatories to toilet tours, we look at the humble loo
- 20 Discover**
Enjoy the high life at these rooftop bars
- 82 Britain Planner**
Unleash your inner student in Oxford
- 98 London in numbers**
Stats about the royal family

Listings

- 22 Sightseeing**
- 44 Museums & Galleries**
- 54 Entertainment**
- 66 Sport**
- 68 Shopping**
- 72 Eating Out**
- 80 Nightlife**
- 86 Essential Information**

Maps

- 64 Theatreland**
- 90 Central London**
- 93 River services**
- 94 London buses**
- 96 London Underground**

DOWNLOAD THE LATEST ISSUE NOW!

at: www.visitlondon.com/londonplanner
or: www.visitbritain.com/londonplanner
Read a digital copy: www.en.calameo.com

or subscribe to receive a printed copy
every month by contacting:
subscriptions@morrisseurope.com



COVER CHILDREN AT EASTER © ISTOCK.
THIS PAGE: AFTERNOON TEA COURTESY OF NATIONAL THEATRE; KELSEY GRAMMER COURTESY OF LONDON COLISEUM; MARATHON © VIRGIN MONEY LONDON MARATHON; A CLOCKWORK ORANGE COURTESY OF THE DESIGN MUSEUM; HARLEM GLOBETROTTERS © BLUE UNIT

April 2019



Free Attractions

London's most popular free attractions compiled according to the latest visitor numbers.
www.visitlondon.com. Source: ALVA

TOP
10



1



2



3



4



5



6



7



8



9



10

1 The British Museum

Famous museum housing the Rosetta Stone, Elgin Marbles and Egyptian mummies

2 The National Gallery

Priceless European art belonging to the nation, with works by Botticelli, da Vinci and van Gogh

3 Tate Modern

Former power station in Bankside containing an international modern art collection

4 Natural History Museum

Displays of the natural world, including prehistoric fossils, dinosaurs and taxidermy

5 Southbank Centre

Major arts centre hosting music, dance and arts events, plus the refurbished Hayward Gallery

6 Somerset House

This neoclassical gem beside the river is home to contemporary arts and cultural events

7 Science Museum

Interactive scientific fun for kids and grown-ups, boasting everything from rockets to steam engines

8 Victoria and Albert Museum

Incredible artefacts spanning more than 3,000 years, including art, sculpture and fashion

9 Royal Museums Greenwich

Maritime history and world-class art at this immense UNESCO World Heritage Site

10 National Portrait Gallery

Graceful gallery housing portraits of historically important and famous British people



EMIRATES STADIUM TOUR

GET CLOSER TO THE HOME OF ARSENAL

AUDIO TOURS IN 9 LANGUAGES



arsenal.com/tours

Cover-More
TRAVEL INSURANCE

VISIT
RWANDA

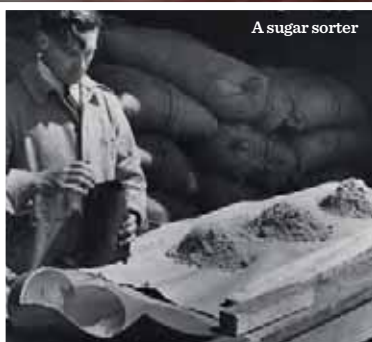
SWEET spot

London's love affair with chocolate began in the 1600s and shows no signs of melting away. **Sarah Riches** finds the best chocolate shops, tours and events – just in time for Easter





Paul A Young



A sugar sorter

From a chocolate lock-in and blindfolded tastings, to macaron making and Choccywoccydoodah's crazy cakes, you're in the right place if you have a sweet tooth. The capital is full of places where chocolate is in charge.

HISTORY TIME

London's links with sugar includes a poignant subject, which is explored in *London, Sugar & Slavery* at the Museum of London Docklands. Displays show how British ships transported West African slaves to Caribbean sugar plantations from 1600. That same year, Queen Elizabeth I granted a royal charter to The East India Company to explore trade in the opposite direction – and you can sample chocolates flavoured with fruit, spices and coffee from around the world at East India's Mayfair shop.

While The East India Company brought luxury chocolate to the UK, Jean-Antoine Brutus Menier introduced it to the masses. The drug manufacturer began coating medicine in chocolate to make it more palatable before establishing the Menier Chocolate Factory near Borough Market in 1870. By 1900, it was producing 1,000 tonnes of chocolate annually – the weight of 83 double-decker buses. The factory is now a theatre, but you'll still find a chocolate platter on its restaurant menu.

A decade after Menier Chocolate Factory opened, George Barratt opened The Chocolate Factory in Wood Green. It produced Dip Dabs, Jelly Babies and Dolly Mixtures before moving to Hertfordshire in 1975. Caxton Chocolate took over the factory, which later became derelict. Now it's home to artist studios and a café, Grandpa Joe's, which is named after the grandfather in *Charlie and the Chocolate Factory*. ▶

Jelly Babies



Chocolate

If that's got you reminiscing about retro brands, then visit *Chocolate Boxes and Biscuit Tins* at the Museum of Brands in Notting Hill to see decorative packaging produced by Cadbury, Fry's and Rowntrees in the late 1800s.

CHOCO-SHOPS

Eugenie Charbonnel and Minnie Walker founded London's oldest chocolate shop, Charbonnel et Walker, in 1875. The Bond Street shop has a Royal Warrant, which means it supplies treats to the Queen. With their handmade boxes and ribbons, these boxes of chocolates make great souvenirs.

If Charbonnel et Walker is out of your budget, visit Hardys instead. While it was founded in 2012, it sells old-fashioned sweets. Pop in to its Covent Garden branch for white mice and Black Jacks. Or treat yourself at Choccywoocydoodah; if you can't afford £4,950 for its Castles in the Sky cake, enjoy a slice in the Bar du Chocolat or buy bars, lollies and marshmallows.

CLASSES, EGG HUNTS AND MORE

Hotel Chocolat's School of Chocolat in Covent Garden has a monthly 'chocolate lock-in'. You'll pair chocolates with everything from red wine to cocoa gin. This month, classes include All About the Egg (9-14 Apr) to taste Easter-themed treats, ▶

A tasting event
at Hotel Chocolat



*London's oldest
chocolate shop,
Charbonnel
et Walker,
opened in 1875*



Choccywoocydoodah



WINDSOR CASTLE

A ROYAL WEDDING

HRH PRINCESS EUGENIE
AND MR JACK BROOKSBANK

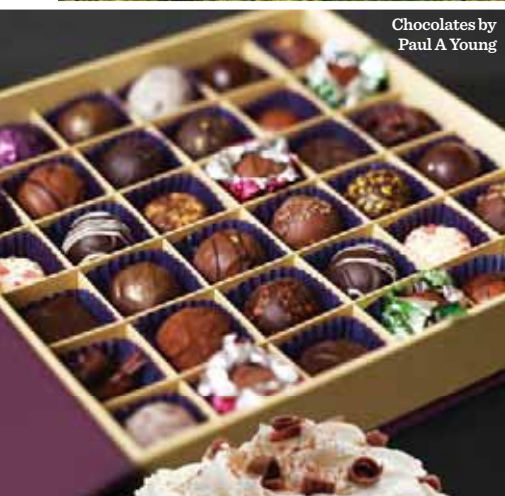
1 March – 22 April 2019

ePA

Book online for guaranteed entry | Seven weeks only



www.rct.uk   
+44 (0)303 123 7304



Chocolates by Paul A Young



Hot chocolate

or Patisserie through a Chocolatier's Lens (23-25 Apr) to taste sweets inspired by desserts. While there, shop for vegan and paleo chocolate.

At the Soho branch of Paul A Young, you can make your own Easter egg. During the five-hour class (13 Apr), you'll watch a demonstration, then mould and decorate an egg, make truffles to go inside it and wrap it in decorative packaging.

If the class is full, join a drop-in session at the Chocolate Museum in Brixton, which also hosts chocolate and wine tastings and truffle classes all year round. Melt in Notting Hill, meanwhile, hosts regular courses for making brownies or macarons. You can also listen to a talk on the history of chocolate and evolving tastes, before tasting it blindfolded. Teens can make chocolate bars, while young kids decorate lollipops.

Children will love hunting for Easter bunnies (6-22 Apr) in the grounds and rooms of Hampton Court and Kensington Palace before winning a chocolate prize. At Kensington Palace, they can dress up in Georgian costume and get crafty, too.

Chocolate Ecstasy Tours is about more than just chocolate. Its new Sweet Treats Adventure around Chelsea and Belgravia lets you try doughnuts, macarons, biscuits and gelato.

If you'd rather relax, then visit Jaz & Jul's Chocolate House in Angel. Buy a hot chocolate and enjoy cake for £1 during happy hours (Fri 3pm-5pm), or opt for chocolate fondue. The café also serves Jaffa pancakes and chai, gingerbread or lime hot chocolate. Whichever activity you choose, you'll have a cracking Easter. ■



HOP-ON-HOP-OFF LONDON SIGHTSEEING BUS TOURS

Pssst, we've got a special deal for London Planner readers - get 20% off with online discount code LP04

+ Unlimited Hop-On-Hop-Off Bus + Boat + Over 100 Bus Stops + Live Guides
+ Free WiFi and Guided Walks + Kids Commentary and Free Booklet

BOOK YOUR TICKET TODAY • THEORIGINALTOUR.COM



Public toilet ANNOUNCEMENT

To celebrate the removal of charges at train station toilets, **Neil Simpson** pays a visit to some of our finest WCs



If you follow British news, you'll know that the country's rail system occasionally generates negative headlines. This month, however, Britain's railway operator, Network Rail, has some good news: it has just abolished toilet charges in all of its stations, including major London hubs Charing Cross, Clapham Junction, Euston, King's Cross, London Bridge, Liverpool Street, Paddington, Victoria and Waterloo. This is great for sightseers, so we're celebrating with a London loo odyssey. Just don't forget to wash your hands.

The Great Stink

London in 2019 is a lovely land of lavish lavatories (well, mostly), but in the mid-19th century, the River Thames was a steaming soup of sewage. That's because households were trying to combat cholera by building private toilets, but this meant that human excrement was flowing into the Thames through sewers which were originally designed for rainwater only. The Great Stink of 1858 forced the House of Commons, located next to the river, to soak its curtains in chloride of lime. This was an attempt to keep the stench from spreading to the politicians, who soon set to work on a massive new sewer system.



Left: *Times* cartoon depicting The Great Stink of 1858

Modern marvels

It's safe to say that London has come a very long way since The Great Stink. These days, the initials WC can often be replaced with IO – Instagram Opportunity. The ultimate examples are at Sketch, a food and drink fantasy land with multiple rooms in Mayfair.

The toilets on the ground floor are individual egg-shaped pods, as if you've stumbled upon an all-white alien incubator. There's even a curved mirror above the sink, to make your photos look even more striking. (www.sketch.london).

WC – You can thank Thomas Crapper for the term 'Water Closet', which was invented at the same time that enclosed and flushing toilets were introduced

Egg-shaped
pods at Sketch



Bathrooms at
The View from
The Shard



Also in the West End, Nopi, a Middle Eastern restaurant on Warwick Street, has restrooms that are clad in mirrors, so it's tricky to find your way out again. The walls are positioned at different angles, making it a bewildering sight to behold (www.ottolenghi.co.uk/nopi).

South of the Thames and 244m (800ft) above the ground, the loos at The View from The Shard are the highest in the city and, not surprisingly, each one has an incredible view to admire (www.theviewfromtheshard.com).

Meanwhile, The Knights Templar pub in the historic Chancery Lane area of the City of London has

a massive ladies' loo – there are even sofas in there. Named after an ancient order of warrior monks, it's a beautiful old building, too (www.jdwetherspoon.com).

Loo? What loo?

Unfortunately, the capital city isn't known for its appealing public toilets anymore, but the Victorians took great pride in them. This means that in contemporary London, a brigade of entrepreneurs has taken advantage by converting former public conveniences into cheeky businesses. The latest is Ladies & Gentlemen in Camden, which is on the corner of Camden Road ▶



**Ladies & Gentlemen
in Camden**

and Royal College Street. This cocktail bar specialises in vintage and aged spirits served in a cosy, warren-like space underground (www.ladiesandgents.co).

Bermondsey Arts Cocktail Club, another water closet-turned-cocktail capsule, is also underground near Borough Tube station. It hosts live jazz every Wednesday (www.bermondseyartsclub.co.uk).

In Fitzrovia, Attendant is another former Victorian toilet which features beautiful black ironwork above ground and house-blended espresso below. This café is a good place for lunch – if you can stomach the thought of eating alongside a row of original porcelain urinals. Try the green pea and chilli smash (www.the-attendant.com).

If you can't digest that thought, we're going to assume that you're more of a Michelin star-style eater – in which case, we think you'll enjoy Restaurant Story. This accomplished eatery in London Bridge has held a Michelin star for its British cuisine since it opened in 2013, which is even more impressive considering that the building used to be a large public toilet (www.restaurantstory.co.uk). ▶



**The elegant
Knights
Templar
restrooms**

LOO – No one is sure where this British slang originated but it may refer to 'Waterloo', which used to be a trade name for iron cisterns



Attendant

London loo quiz

- 1 Until the end of the 19th century, London's toilet system was a mess. What was the name of the man who invented the flushing loo, which transformed our toilet habits in a way that is unchanged to this day?
- 2 Why do older Londoners still say 'I have to spend a penny' when they need the lavatory?
- 3 Where can you find a Roman bath and lavatory in London?

(answers overleaf)

PREVIOUS PAGES: THE GREAT STINK © ALAMY; SKETCH © ED BEEVEY; THE SHARD © NEIL SIMPSON; THIS PAGE: LADIES & GENTLEMEN COURTESY OF LADIES & GENTLEMEN; THE KNIGHTS TEMPLAR © GILLIAN EVANS; ATTENDANT © MING TANG-EVANS

GRINGOTTS BANK



OPENING
APRIL 2019

WARNER BROS.
STUDIO TOUR
LONDON
THE
MAKING OF
Harry Potter

Enter the Wizarding Bank and see how filmmakers brought the magic to life.

TICKETS MUST BE PURCHASED IN ADVANCE
AT WBSTUDIOTOUR.CO.UK



Toilets

Toilet tips

As you might have gathered, the availability of pleasant public toilets is not one of London's strong points. What the city does have a lot of, however, is hotels. They are everywhere and if you walk in confidently, staff will assume you're staying there and you'll avoid any fuss. Trust us: people do this all the time. Communal hotel loos are usually downstairs beyond reception and they are almost always beautiful – bonus.

In late 2017, the Mayor of London Sadiq Khan announced that he was working to introduce more public toilets into commercial and public spaces, including a provision for gender-neutral facilities. Then, in 2018, the City of London Corporation closed a survey which called for public opinion on gender-neutral loos in the Square Mile. So far, we know that the Barbican has restrooms that may be used by people of any gender, but it sounds like wider change is pending.

London Loo Tours

If you're really enjoying this article, then you're the perfect customer for London Loo Tours. Yes, this tour company really does exist. Choose from The Original Loo Tour, The Bloomsbury Loo Tour, Thomas Crapper's Times and even The Fart Tour. The first two take place on Tuesdays and Saturdays, while Crapper and Fart must be requested in advance (www.lootours.com). ■

London Loo Tours



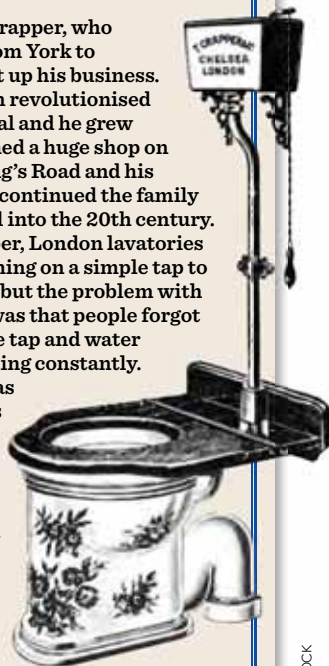
Quiz answers

1 Thomas Crapper, who walked from York to London to set up his business. His invention revolutionised waste disposal and he grew rich. He opened a huge shop on London's King's Road and his descendants continued the family business well into the 20th century. Before Crapper, London lavatories relied on turning on a simple tap to flush the loo, but the problem with this system was that people forgot to turn off the tap and water was left running constantly. The result was a chronic loss of pressure in London's water system and badly flushing loos.

2 Until the 1960s, London was famous for its number of public lavatories. Many were very decorative with high ceilings – but they all had one thing in common: they charged one penny.

3 Where Queen Victoria Street meets the old Huggin Hill near Mansion House Tube station, there is a tiny green space known as Cleary Garden (EC4V 2AR). Here you'll find an old brick wall with stone foundations that seem far older. This peaceful corner has never been built on because it is the site of a Roman bath house and the frigidarium, tepidarium and other rooms under nearby houses are still to be excavated. Part of a Roman stone wall can still be seen below the Victorian brick wall and the spring that once served the bath house bubbled forth until fairly recently.

This toilet quiz was written by Tom Quinn, author of *The Strangest London Quiz Book*. For a chance to win one of three copies, visit www.londonplanner.com/feature/toilets-in-london





Climb London's superstar attraction

The biggest stars play here.
The biggest fans flock here.

Now see this world-famous
venue from a whole new angle.



6
of the
best

Rooftop bars

As temperatures rise, visit one of these dreamy rooftop bars where you can sip a cocktail while gazing across London's swoon-worthy cityscape

Radio Rooftop Bar

The dress code for the luxurious rooftop bar of ME London Hotel is smart-casual, but when the view includes The Shard, St Paul's Cathedral and the Houses of Parliament, jeans somehow don't seem appropriate. Soak up the view from one of the best bars in London at a table filled with tapas and cocktails. Open daily throughout the year. www.radiorooftop.com/london

Aqua Spirit

Boasting two stylish terraces overlooking Regent Street, Aqua Spirit is well placed for sundowner cocktails post-meeting or after a shopping spree. Gaze out over Liberty, the BT Tower and the Coca-Cola London Eye while sipping on a classy tittle such as the City Sunrise cocktail, a blend of tequila, mescal and lime. Cheers! www.aquaspirit.co.uk

Boundary Rooftop

With Terence Conran overseeing its creation, it's no wonder Boundary Rooftop looks so good. The heated rooftop orangery at this converted Victorian warehouse in Shoreditch has a kitchen garden, citrus trees and a fantastic bar and grill. Soak up the sun or sit in the shade under the vine-cloaked pergola and enjoy Mediterranean cuisine and exquisite cocktails. Open throughout the year. www.boundary.london/rooftop

Aviary London

This handsome rooftop bar and restaurant enjoys a lofty position on the 10th floor of the Montcalm Royal London House Hotel in Finsbury Square, just a short walk from Old Street or Liverpool Street Tube stations. Gaze over the City's skyline with a botanical-themed cocktail on the heated terrace, where you can plonk yourself down on plush lounge seating.



RADIO ROOFTOP BAR COURTESY OF RADIO ROOFTOP BAR; AQUA SPIRIT COURTESY OF AQUA SPIRIT



Radio Rooftop Bar



Aviary London



Boundary Rooftop



Aqua Spirit

Delicious meat and fish cooked over charcoal is on the menu if you're feeling peckish, or select one of the small plates. Open throughout the year. www.aviarylondon.com

12th Knot at Sea Containers London

This gorgeous open-plan lounge and terrace overlooking the Thames is on the 12th floor of the nautical-themed hotel Sea Containers London. Take in spectacular views of the river, St Paul's Cathedral and the city skyline. Select from the cocktail menu which has a British-American twist, and enjoy the glamorous interior that

leads out onto a cosy terrace. The dress code is smart-casual and the bar is open throughout the year from Tuesday to Saturday. www.seacontainerslondon.com

Frank's Café

If you're planning another trip to London in summer, visit Frank's Café on top of a multistorey car park in Peckham. Watch the sun set with a cocktail, cool company and amazing sculptures close by. With a relaxed vibe, kids are welcome any time – you can even bring blankets to snuggle under if the temperature dips. The bar is open from May. www.boldtendencies.com/franks-cafe

Find out more

Download the Visit London app to find more amazing things to do in London, hot happenings, hidden gems, bars and restaurants as well as travel maps to help you navigate the city. Search Visit London on App Store or Google Play, or go to www.visitlondon.com/app.

Sightseeing



By the power of pixels

Are you reading this while trying to stop your child (or inner child) from fighting endless battles on *Fortnite*? Then you already know that computer games are big business. The capital's enterprising minds know it too, and the **London Games Festival** (2-14 Apr) proves just how seriously this city takes playtime.

More than 65,000 people enjoyed the annual festival last year. This year it's set to be even bigger, with more than 400 computer games to try out. Many of those games will light up screens in Somerset House at *Now Play This* (6-14 Apr). A festival within a festival, it showcases experimental game design and hopes to inspire enthusiasts with talks and workshops, while also being family-friendly. Check out *Labyrinth*, a free outdoor game in the Fountain Court, as well as

another free game that takes you on an adventurous trail around Somerset House.

If you're here on 6 April, we encourage you to take to the streets of the City of London for a memorable sight: starting at Guildhall Yard (near Bank Tube station), the annual Games Character Parade marches its way around St Paul's Cathedral, over Cheapside and back to the Guildhall. It's a dazzling gaggle of gaming fans dressed as their favourite characters – and a treat for kids to witness.

As well as these main events, the London Games Festival has its own fringe events involving other organisations. One of the most popular is the Science Museum's *Power Up* (6-22 Apr; p. 48), during which it fills a large room with every computer console that you can think of, from a Super Nintendo to Sony's latest PlayStation.



Power Up

The London Games Festival is run by Film London, which represents London's screen industry. With the city's West End being home to a multitude of world-class special effects studios (Double Negative in Soho has won four Oscars in less than 20 years), not even Mario's nemesis Wario would bet against our gaming industry – which means that this festival is sure to be a winner.

– Neil Simpson
www.games.london

POWER UP © BENJAMIN EALOWEGA

INFO To dial the UK, remove the first 0 and add 44. **Map:** refers to the grid coordinates on our Central London map (p. 90). Prices listed here are for tickets bought in person – reductions may be available online

SIGHTSEEING

ARCELORMITTAL ORBIT

This 115m-tall observation tower offers 20-mile views over the Olympic Park and beyond. Check for times and prices. *Queen Elizabeth Olympic Park, E20 2SS. T: 0333-800 8099. www.arcelormittalorbit.com. Station: Stratford. Off map.*

BANQUETING HOUSE

This 17th-century building was designed by Inigo Jones for James I, with an exquisite painted ceiling. Daily 10am-5pm. Adult £7; child free. *Whitehall, SW1A 2ER. T: 020-3166 6000. www.hrp.org.uk. Station: Westminster. E8.*

THE BRITISH LIBRARY

The world's largest library has a great permanent collection as well as a programme of temporary exhibitions (p. 24). Please check for times and prices. *96 Euston Rd, NW1 2DB. T: 0330-333 1144. www.bl.uk. Station: King's Cross. C7.*

BUCKINGHAM PALACE

The London residence of the British monarch, normally closed to the public. *The Mall, SW1A 1AA. T: 0303-123 7300. www.rct.uk. Station: Victoria/Green Park. F6/F7.*

CHANGING THE GUARD

Watch the ceremony on the Palace's forecourt (except in very wet weather). From 10am; check for dates. Free. *Buckingham Palace, The Mall, SW1A 1AA. T: 030-3123 7300. www.householddivision.org.uk. Station: Green Park. F6/F7.*

THE CHARTERHOUSE

Originally a burial site during the Black Death. Check for times, prices and tours. *Charterhouse Square, EC1M 6AN. T: 020-3818 8873. www.thecharterhouse.org. Station: Barbican. C9.*

CUTTY SARK

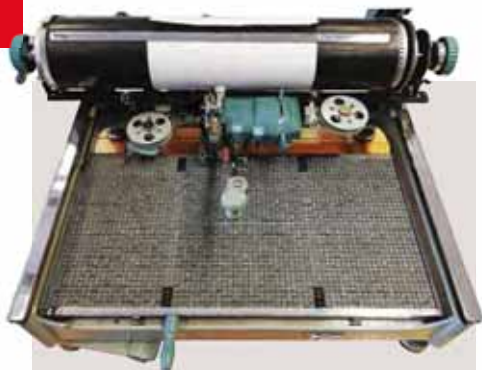
FAMILY Climb on board the world's last surviving tea clipper and discover stories of life on board the fastest ship of her day. Daily 10am-5pm. Adult £13.50; child £7. Joint tickets with the Royal Observatory available. *King William Walk, SE10 9HT. T: 020-8312 6608. www.rmg.co.uk. Station: Cutty Sark/Greenwich. Map inset.*

**SAVE £££s
ON ATTRACTIONS
WITH THE LONDON PASS®**

**£5.00 OFF PASSES
AT GOLDEN TOURS**

Access to a choice of
over 80 attractions





A double bill

The British Library's exhibition **Writing: Making Your Mark** (from 26 Apr; p. 23) explores the history of writing, including Egyptian hieroglyphs and a 1970s Chinese typewriter. If you're here earlier, **Imaginary Cities** (from 5 Apr) encourages visitors to consider how digitisation is changing the purpose of libraries, with works by digital artist Michael Takeo Magruder.

DR. JOHNSON'S HOUSE

Writer Dr Samuel Johnson compiled his English dictionary here. Mon-Sat 11am-5pm. Adult £7; child £3.50; cash only. *17 Gough Square, EC4A 3DE. T: 020-7353 3745. www.drjohnsonshouse.org. Station: Chancery Lane. D9.*

HOUSES OF PARLIAMENT

See art and architecture in the parliament building. Tours Sat. Multimedia self-guided tour adult £19.50, young adult (16-18) £17, child £8 (one child free per paying adult); guided tour adult £26.50, young adult £22, child £11.50; child-friendly family guided tour adult £19.50, child free. *Palace of Westminster, Parliament Square, SW1A 0AA. T: 020-7219 4114. www.parliament.uk. Station: Westminster. F8.*

KENSINGTON PALACE

This royal residence in Kensington Gardens was Princess Diana's last home, with exhibitions relating to her life. Daily 10am-6pm. Adult £19.50; child £9.70. *Kensington Gardens, W8 4PX. T: 0844-482 7777. www.hrp.org.uk. Station: High Street Kensington. Off map.*



'AMAZING!'



Google tripadvisor facebook

Gunther von Hagens' Original

**BODY
WORLDS**

THE MUSEUM EXPERIENCE

VISIT US  PICCADILLY CIRCUS

ROYAL BOTANIC GARDENS, KEW

This botanical research centre with tropical greenhouses contains plants from across the globe.

NEW From 13 Apr: *Chihuly: Reflections on Nature*. Glass sculptures (p. 28). Daily 10am-7pm. Adult £18; child £6; charges for special exhibitions. *Richmond, Surrey, TW9 3AB. T: 020-8332 5655. www.kew.org. Station: Kew Gardens. Off map.*

KIDZANIA LONDON

FAMILY KidZania has everything a child could want, such as TV and animation studios and an aviation academy. Please check for times and prices. *Westfield London Shopping Centre, Ariel Way, W12 7GA. T: 0330-131 3333. www.kidzania.co.uk. Station: Shepherd's Bush. Map inset.*

THE LONDON BRIDGE EXPERIENCE & LONDON TOMBS

Special effects and actors bring this scary attraction to life. Tickets also include the London Tombs, located in a former plague pit. Check for times and prices. *2-4 Tooley St, SE1 2SY. T: 020-7403 6333. www.thelondonbridgeexperience.com. Station: London Bridge. E10.*

THE LONDON DUNGEON

This thrilling attraction whisks you to the capital's most perilous past, which comes to life with costumed characters. Joint tickets available with SEA LIFE London Aquarium, Coca-Cola London Eye, Madame Tussauds and Shrek's Adventure! Please check for times and prices. *County Hall, Westminster Bridge Rd, SE1 7PB. T: 020-7654 0809. www.thedungeons.com. Station: Waterloo. F8.*

COCA-COLA LONDON EYE

FAMILY One of the world's largest observation wheels. Joint tickets available with the SEA LIFE London Aquarium, London Dungeon, Madame Tussauds and Shrek's Adventure! Check for times and prices. *County Hall, Westminster Bridge Rd, SE1 7PB. T: 0871-781 3000. www.londoneye.com. Station: Waterloo. F8.*

LONDON MITHRAEUM

This cultural hub showcases an ancient Roman temple which was built here nearly 2,000 years ago. Please check for times. Admission free. *12 Walbrook, EC4N 8AA. T: 020-7330 7500. www.londonmithraeum.com. Station: Bank. D10.*



PRE-BOOK ONLINE TO SAVE AT BODYWORLDS.CO.UK

Same day tickets are also available at our Box Office, 1 Piccadilly Circus

Sightseeing

ZSL LONDON ZOO

FAMILY The world's oldest scientific zoo has a stunning array of more than 750 species, including Asiatic lions and endangered Sumatran tigers – check times for special feeding sessions. Daily 10am-6pm; check for prices. *Regent's Park, NW1 4RY. T: 020-7722 3333. www.zsl.org. Station: Camden Town. B6.*

MADAME TUSSAUDS

FAMILY The celebrated home of life-sized wax figures depicting famous people from the worlds of music, sport, history and more, plus a *Star Wars* section. Joint tickets available with SEA LIFE London Aquarium, London Dungeon, Coca-Cola London Eye and Shrek's Adventure! Check for times. Adult £35; child £30. *Marylebone Rd, NW1 5LR. T: 0871-222 0177. www.madame-tussauds.com/london. Station: Baker Street. C6.*

THE MONUMENT

Stone column built in 1677 to commemorate the 1666 Great Fire of London. Climb the 311 steps to its observation gallery. Check for times and prices. *Monument St, EC3R 6BD. T: 020-7626 2717. www.themonument.org.uk. Station: Monument. E10.*



A royal birthday

The Queen is lucky enough to have two birthdays: the day she was born (21 Apr) and an official birthday, which is usually the second Saturday in June (8 Jun). This month, help her celebrate turning 93 – not by blowing out 93 candles, but by attending a noon gun salute in Hyde Park, or 1pm at the Tower of London. www.royal.uk/gun-salutes

SAVE £££ ON ATTRACTIONS WITH THE LONDON PASS®

- Access to a choice of **over 80 attractions**
- Fast track **entry at busiest attractions**
- Free guidebook
- Adult prices **from £75**
- Pass available **for 1, 2, 3 & 6 days**



£5.00 OFF MULTIDAY PASSES

Multiday London Passes (2, 3 and 6 day only)

To redeem this offer present this voucher at a GOLDEN TOURS visitor centre at one of the below locations:

Leicester Sq - 11a Charing Cross Road, London WC2H 0EP
(inside the ticket information booth opposite Garrick theatre)

Victoria - 4 Fountain Square, 123-151 Buckingham Palace Road, London SW1W 9SH (in Colonnade walk)

Kensington - 156 Cromwell Road, London SW7 4EF (near Gloucester Road tube station)

£5.00 DISCOUNT

TERMS: Offer only valid at Golden Tours locations. Present the voucher or code at the time of purchase. Offer valid until 25/10/20 for a maximum of 6 people per transaction.

BOOK NOW

CHRISTIAN DIOR

DESIGNER OF DREAMS

★★★★★

*'Truly
jaw-dropping'*

THE LONDONIST



★★★★★

'A sensation'

BBC NEWS



★★★★★

*'The greatest fashion show
the V&A has ever staged'*

THE TELEGRAPH



V&A South Kensington

Advanced booking
highly recommended

Until 1 September 2019
vam.ac.uk

Supported by

SWAROVSKI

AMERICAN
EXPRESS

Sightseeing



'The Victorian glasshouse is a beauty'

Neil Simpson, Sightseeing Editor

Royal Botanic Gardens, Kew is a great suntrap, so as spring arrives it's harnessing all of that extra light for maximum impact. **Chihuly: Reflections on Nature** (from 13 Apr; p. 25) marks the return to Kew of Seattle-based glass artist Dale Chihuly. More than 30 of his works will be displayed around the UNESCO World Heritage Site, with the star of the show set to be a new piece suspended from the roof of the Temperate House. This massive Victorian glasshouse, recently restored, is a beauty in itself, so to see one of his striking works at the centre of it will be a treat.





London's Defining
Landmark

Discover the heart of London

A marvel of British Design.
A history that spans centuries.
Start your journey here.

   #insidetowerbridge

Book your visit now at
towerbridge.org.uk



SUMMER SUN © CHIHULY STUDIO

STAR WARS

Madame
Tussauds
LONDON



FEEL THE JUMP TO
LIGHTSPEED

DISCOVER A WORLD OF FAMOUS FUN

BOOK TODAY AND SAVE AT MADAMETUSSAUDS.COM/LONDON



MERLIN'S
MAGICAL
LONDON

Sightseeing

THE O2

Huge venue for entertainment including ICON, an all-new shopping outlet. *Peninsula Square, SE10 ODX. T: 020-8463 2000. www.theo2.co.uk. Station: North Greenwich. Map inset.*

OLD ROYAL NAVAL COLLEGE

This is the home of British naval training. Daily 10am-5pm. Admission free. *King William Walk, SE10 9NN. T: 020-8269 4799. www.ornc.org. Station: Cutty Sark/Greenwich. Map inset.*

THE ROYAL MEWS

This beautiful part of Buckingham Palace houses the Queen's vehicles and horses. Daily 10am-5pm; closed 19 Apr. Adult £12; child £6.80. *Buckingham Palace Rd, SW1W 1QH. T: 0303-123 7302. www.rct.uk/royalmews. Station: Victoria/Green Park. F6.*

THE ROYAL OBSERVATORY

FAMILY Stand astride the Prime Meridian, where east meets west. Daily 10am-5pm. Adult £15; child £6.50. Joint tickets with Cutty Sark available. Book online to save. Audio guide tour available. *Blackheath Ave, SE10 8XJ. T: 020-8858 4422. www.rmg.co.uk. Station: Greenwich. Map inset.*



Drama king

Although no one can be sure of Shakespeare's exact date of birth, most agree it's 23 April. So to mark his birthday month, **Shakespeare's Globe** begins a new run of *Henry IV Part I*, followed by *Henry IV Part II* and *Henry V*. Guided tours of the theatre take place every day, while London Walks offers a Shakespeare's & Dickens' London tour twice a week (£10, meet outside exit two of St Paul's Tube station). *21 New Globe Walk, SE1 9DT. T: 020-7902 1400. www.shakespearesglobe.com*

St
Martin
in
the
Fields

The best of London all under one spire

Upstairs explore beautiful architecture, church services or a candlelit concert.

Downstairs enjoy some brass rubbing, shopping and the Café in the Crypt.

Outside don't miss the Café in the Courtyard.



St Martin-in-the-Fields
Trafalgar Square, London WC2N 4JJ
+44 (0)20 7766 1100
www.smitf.org



**Three domes.
Five floors.
And Europe's
greatest crypt.**
See an *other*
side of St Paul's.



Climb one dome for the best 360° views in London. Step beneath another to experience the unforgettable. Enrich your visit with an acclaimed multimedia guide, available in nine languages.



www.stpauls.co.uk

 **St PAUL'S**
CATHEDRAL

Sightseeing

SEA LIFE LONDON

FAMILY See 500 species of global marine life and walk-through tank tunnels. Check for times and prices. Joint tickets available with Coca-Cola London Eye, London Dungeon, Madame Tussauds and Shrek's Adventure! *County Hall, Westminster Bridge Rd, SE1 7PB. T: 0333-321 2001. www.sealife.co.uk. Station: Westminster. F8.*

18 STAFFORD TERRACE

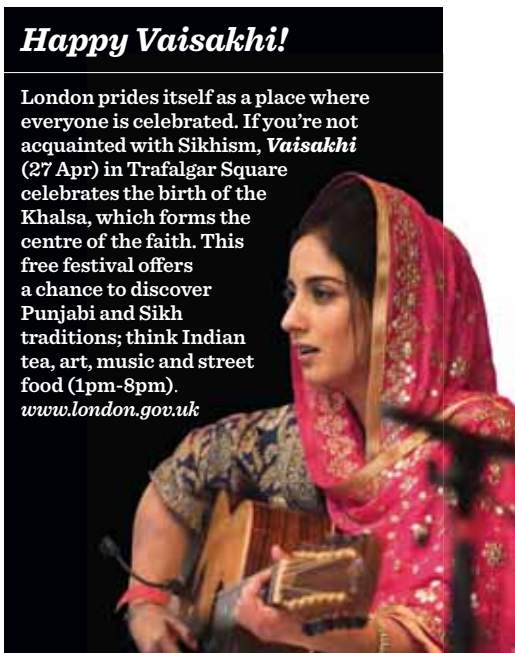
This house gives an insight into the personal lives of *Punch* cartoonist Edward Linley Sambourne. Check for times, prices and tours. *18 Stafford Terrace, W8 7BH. T: 020-7602 3316. www.rbkc.gov.uk. Station: High Street Kensington. Off map.*

SHREK'S ADVENTURE!

FAMILY Ride the magical 4D 'DreamWorks Tours' bus to step into live actor fairy tale-themed shows. Joint tickets with the Coca-Cola London Eye, London Dungeon, Madame Tussauds and SEA LIFE London Aquarium available. Please check for times. Adult £27.50; child £22. *Riverside Building, County Hall, Westminster Bridge Rd, SE1 7PB. T: 0871-221 2837. www.shreksadventure.com. Station: Waterloo. F8.*

Happy Vaisakhi!

London prides itself as a place where everyone is celebrated. If you're not acquainted with Sikhism, **Vaisakhi** (27 Apr) in Trafalgar Square celebrates the birth of the Khalsa, which forms the centre of the faith. This free festival offers a chance to discover Punjabi and Sikh traditions; think Indian tea, art, music and street food (1pm-8pm). www.london.gov.uk



LONDON Bike Tours

Enjoy a ride through London's famous sites, with the only electric bike tour in town.

 **GoldenTours**
Experience London and the UK



020 7233 7030
goldentours.com

THE ROYAL MEWS BUCKINGHAM PALACE



BE TRANSPORTED THROUGH ROYAL HISTORY

Discover the horse-drawn coaches and carriages of Buckingham Palace at
THE ROYAL MEWS

Sightseeing

SPENCER HOUSE

This palace was built in 1766 by Lord Spencer, a relation of Princess Diana, with sumptuous, Imperial Rome-inspired interiors. Open Sun only. Check for tours. Adult £15; child £12. 27 St James's Place, SW1A 1NR. T: 020-7514 1958. www.spencerhouse.co.uk. Station: Green Park. E7.

ST MARTIN-IN-THE-FIELDS

Landmark church with tours, a brass-rubbing centre, music recitals (some free), café and gift shop. Please check for listings, times and prices. Trafalgar Square, WC2N 4JJ. T: 020-7766 1100. www.stmartin-in-the-fields.org. Station: Charing Cross. E8.

ST PAUL'S CATHEDRAL

Sir Christopher Wren's 300-year-old cathedral is famous for its stunning mosaics. Climb the dome and try the unique acoustics of the Whispering Gallery, then head to the top for spectacular views over London. Mon-Sat 8.30am-4.30pm. Adult £20; child £8.50. St Paul's Churchyard, EC4M 8AD. T: 020-7246 8350. www.stpauls.co.uk. Station: St Paul's. D9/10.



Patron saint's party

England's patron saint, St George, was born on 23 April and the famous dragon slayer's birthday is celebrated in Trafalgar Square with a free afternoon party. Join in the St George's Day festivities at **The Feast of St George** (20 Apr), which combines live music, child-friendly activities and great British food. While you're there, visit The National Gallery to admire two paintings of the man himself, both titled *Saint George*.

SEE IT.
HEAR IT.
FEEL IT.



at the Chelsea FC Stadium Tours & Museum.

Get closer than ever before with exclusive content, 360 films and much more.

Visit chelseafc.com/tours for more information.

TOURS AVAILABLE IN 12 LANGUAGES



02514



TAKE THE **VICTORIA** LINE
TO VAUXHALL OR THE
NORTHERN LINE TO OVAL



KIA OVAL

GROUND TOURS

Now available
Wednesday, Thursday,
Friday & Saturday

50% off admission
with promo code
LONDON50

KIAOVAL.COM | 020 3946 0100

Sightseeing

TOWER BRIDGE EXHIBITION

This breathtaking bridge, completed in 1894, is one of London's most famous landmarks. You can also tour the engine rooms with a guide, or join a yoga session. Check for times, prices and bridge lift times. *Tower Bridge Rd, SE1 2UP. T: 020-7403 3761. www.towerbridge.org.uk. Station: Tower Hill. E11.*

TOWER OF LONDON

This historic landmark includes the Bloody Tower, Traitors' Gate and the Jewel House. It's also the home of the dazzling Crown Jewels (p. 45), one of the most powerful symbols of the British monarchy. Enjoy free guided tours by 'Beefeaters'. Check for times. Adult £27.50; child £13.10. *Tower Hill, EC3N 4AB. T: 0844-482 7799. www.hrp.org.uk. Station: Tower Hill. E11.*

UP AT THE O2

Take an uplifting trip across the roof of the O2 to a viewing platform with spectacular 360-degree views. Suitable for wheelchair users, too. From £30. *The O2, Peninsula Square, SE10 ODX. T: 020-8463 2680. www.theo2.co.uk. Station: North Greenwich. Map inset.*

THE VIEW FROM THE SHARD

Ascend the tallest building in Western Europe in a high-speed lift. At 309m up, on a clear day you can see as far as Windsor. Online booking only; check for times and prices. *32 London Bridge St, SE1 9SG. T: 0844-499 7111. www.theviewfromtheshard.com. Station: London Bridge. E10.*

WARNER BROS. STUDIO TOUR LONDON

FAMILY Explore behind the scenes of the *Harry Potter* films and see the Great Hall, Hagrid's Hut, Diagon Alley and a recreation of Platform 9¾. Please check for times. Adult £43; child £35. Booking essential. *Studio Tour Drive, Leavesden, Hertfordshire, WD25 7LS. T: 0845-084 0900. www.wbstudiotour.co.uk. Station: Euston to Watford Junction, then shuttle bus. Off map.*

WESTMINSTER ABBEY

Consecrated in 1065, this stunning abbey with ornate tombs is the crowning and burial site of most English monarchs. Check for organ recitals, including free ones every Sun. Please check for times and prices. *20 Dean's Yard, SW1P 3PA. T: 020-7222 5152. www.westminster-abbey.org. Station: Westminster. F7.*



Royal Albert Hall

ROYAL ALBERT HALL AFTERNOON TEA



Traditional afternoon tea served in the iconic Royal Albert Hall.

Served Tuesday - Sunday 2:00pm - 4:30pm

BOOK NOW: royalalberthall.com | 020 7589 8212



CUTTY
SARK
GREENWICH

rmg.co.uk

Save online
with the Day Explorer Ticket

Don't be a tourist Be an explorer

Climb on board *Cuttty Sark*; meet the crew
and discover what life was like at sea

Part of Royal Museums Greenwich

Cuttty Sark | Royal Observatory | National Maritime Museum | The Queen's House

📍 Cutty Sark (Zone 2) 🚶 Greenwich Pier

🚶 Greenwich (Zone 2) Only 8 minutes from London Bridge



Sightseeing

RIVER TRIPS

CITY CRUISES

Daily guided sightseeing tours on the River Thames between Westminster, London Eye, Tower and Greenwich piers. Please check for times and prices. *Departure points vary. T: 020-7740 0400. www.citycruises.com.*

LONDON EYE RIVER CRUISE

Live commentary on a 40-minute sightseeing river cruise. Check for times. Adult £13.50; child £10. Discounted joint tickets with the London Eye available. *London Eye Pier, South Bank, SE1 7PB. www.londoneye.com. Station: Waterloo. F8.*

MBNA THAMES CLIPPERS

The fastest, most frequent fleet on the river, with departures from London piers every 20 minutes. River Roamer hop-on, hop-off (all day from 9am). Check for prices. *Departure points vary. T: 020-77001 2200. www.mbnathamesclippers.com.*

THAMESJET

This 50-minute adrenaline-fuelled experience is the most extreme ride on the river. Departs from Westminster Pier, check for times. Adult from £39; child from £29. *Westminster Bridge, SE1 7GL. T: 020-7740 0400. www.thamesjet.com. Station: Westminster. F8.*

TOURS & GUIDED WALKS

BEE MIDTOWN GUIDED WALKS

Themed walking tours around Bloomsbury, Farringdon and Holborn. A programme of all walks is published on its home page; most walks do not require pre-booking. *Departure points vary. T: 020-7078 7077. www.bee-midtown.org.*

BIG BUS TOURS

Daily sightseeing trips aboard a fleet of open-top, double-decker buses. Please check for times and prices. *Departure points vary. T: 020-7808 6753. www.bigbustours.com.*

BIG BUS WALKING TOURS

Enjoy a 90-minute historic and royal guided walk. Daily 10.30am. Free with Big Bus London Tour tickets. *Departs from the Big Bus stop in Trafalgar Square, WC2N 5DN. T: 020-7808 6753. www.bigbustours.com. Station: Charing Cross. E7.*

CAPITAL TAXI TOURS

A guide drives you in a cab for up to five people. Themed London tours by day or night. Check for times and prices. *Departure points vary. T: 020-8590 3621. www.capitaltaxitours.co.uk.*



Painted Hall at Old Royal Naval College



GoldenTours
Experience London and the UK



Sightseeing Coach Tours • Open Top Bus Tours
Warner Bros. Studio Tour London • London Bike Tours
Attraction Tickets • Groups • UK & Paris Rail Trips

020 7630 2039

www.goldentours.com



LONDON WALKS

*"London Walks is
the premier walking
tour company in the
entire world"*

American Tour Guides Convention

london@walks.com
020 7624 3978
www.walks.com

Sightseeing

EVAN EVANS

London's oldest and largest sightseeing company takes you everywhere, both in and outside the city, from Stonehenge to Bath. Please check for times and prices. *Departure points vary.* T: 020-7950 1777. www.evanevanstours.com.

GOLDEN TOURS

Quality tour experiences of London, plus popular out-of-town locations. An unrivalled range of tours and services. Please check for times and prices. *Departure points vary.* T: 020-7630 2039. www.goldentours.com.

GOLDEN TOURS BIKE TOURS

Embark on a tour of the capital on a standard or electric bike. Check for prices. *11a Charing Cross Rd, WC2H 0EP.* T: 020-7341 6255. www.goldentours.com. Station: Leicester Square. E8.

GOLDEN TOURS OPEN-TOP BUS TOURS

The Essential Tour includes an English-speaking guide, or there are multilingual audio commentary tours, during which you can hop-on and hop-off the bus. Check for prices. *Departure points vary.* T: 020-7630 2039. www.goldentours.com.

JACK THE RIPPER TOUR

Popular two-hour walks offering a look at the infamous killer. Booking essential. Daily 7pm. £10. *Exit 4, Aldgate East Tube station.* T: 020-8530 8443. www.jack-the-ripper-tour.com. *Off map.*

LONDON WALKS

London's oldest walking tour company offers more than 300 themed walks, including in the evenings. Each takes around two hours; booking not required. Adult £10; child free. *Departure points vary.* T: 020-7624 3978. www.walks.com.

ORIGINAL LONDON SIGHTSEEING WALK

Ninety-minute walks depart daily from the Original London Visitor Centre. Check for themed tours, times and prices. *17-19 Cockspur St, SW1Y 5BL.* T: 020-8877 1722. www.theoriginaltour.com. Station: Charing Cross. E7.

THE ORIGINAL TOUR

Live, multilingual open-top guided bus tours, hop-on and hop-off. Check for tours, times and prices. *17-19 Cockspur St, Trafalgar Square, SW1Y 5BL.* T: 020-8877 1722. www.theoriginaltour.com. Station: Charing Cross. E7.

JACK THE RIPPER TOUR

A WALK WORTH INVESTIGATING

"...this is an eerie, historical site... and, without a single prop, Richard Jones succeeds in conjuring more potent memories out of the area than from a neighbourhood full of palaces..." *The Sunday Times*

SEE IT ONLINE BEFORE YOU BOOK

You can follow a step by step guide to our route, read the full Jack the Ripper story and watch videos on our website BEFORE you take the walk:

www.rippertour.com

On our walk we show you original Victorian photographs of the streets through which you are walking as they were in 1888.

We are the only Jack the Ripper Walk to limit the number of participants so booking is essential.



TO BOOK YOUR PLACE PLEASE VISIT OUR WEBSITE
WWW.RIPPERTOUR.COM or TEL: 020 8530 8443

THE LONDON BRIDGE EXPERIENCE & TOMBS

THE UK'S BEST SCARE ATTRACTION

HORRIFYINGLY GOOD
FAMILY FUN!

EXCLUSIVE OFFER!

£5 OFF
VOUCHER

LP419



TheLondonBridgeExperience.com

The London Bridge Experience, 2-4 Tooley Street, London Bridge, London SE1 2SY

Located directly opposite the The London Bridge Underground (Tooley Street exit).

FREE audio guides available



Sightseeing

ROYAL ALBERT HALL TOURS

Take the one-hour tour of this beautiful Victorian concert hall. Check for times. Adult £14.50; child £7. *Kensington Gore, SW7 2AP. T: 020-7959 0558. www.royalalberthall.com. Station: South Kensington. F4.*

SEE LONDON BY NIGHT TOUR

Ride around the West End and City in the evening; regular departures from outside The Ritz. Check for times. Adult £21; child £12. *150 Piccadilly, W1J 9BR. T: 020-7183 4744. www.seelondonbynight.com. Station: Green Park. E6.*

OUT OF TOWN

HAMPTON COURT PALACE

This Tudor palace, a favourite of Henry VIII, is set in 60 acres of parkland. Daily 10am-6pm. Adult £23.70; child £11.90. *East Molesey, Surrey, KT8 9AU. T: 0844-482 7777. www.hrp.org.uk. Station: Waterloo to Hampton Court. Off map.*

PALACE OF HOLYROODHOUSE

The Queen's official residence in Scotland with state apartments and Mary, Queen of Scots' chamber. It's located at the bottom of the Royal

VIDEO SPECIAL

TOP LONDON PHOTO SPOTS

Share London selfies with #LPSelfie and win a London Gin Cruise www.youtube.com/londonplanner



Mile, at the opposite end to Edinburgh Castle Daily 9.30am-6pm; closed 19 Apr. Adult £15; child £8.70. *Canongate, The Royal Mile, Edinburgh, EH8 8DX. T: 0303-123 7306. www.rct.uk. Station: Edinburgh Waverley. Off map.*

WINDSOR CASTLE

The Queen's weekend home and the world's oldest inhabited castle. Includes state apartments furnished with art by Rembrandt, Rubens and Canaletto. Please check for times. Adult £22.50; child £13. *Windsor, Berkshire, SL4 1NJ. T: 0303-123 7304. www.rct.uk. Station: Waterloo to Windsor & Eton Central or Windsor & Eton Riverside. Off map.*

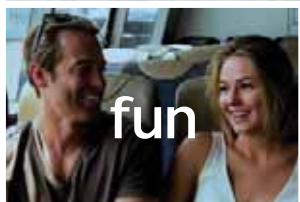
mbna
thames clippers

Departures every 20 minutes from major piers

For a different view of London take the River Bus



from
£4.40
adult single



fun



fast



frequent

Oyster, Contactless, or buy online | mbnathamesclippers.com |



Houses of Parliament

More than just Big Ben



Tours available year round
Book online or call us on +44 20 7219 4114

parliament.uk/visit

© Crowdium Vision

I TRAVEL FOR THE STORIES

Marvel at the morning sun glistening on the serene waters of stunning Loch Garten. Cairngorms National Park, Scotland.

#LoveGreatBritain



London looks amazing, beautifully lit up at night

Departing daily from Green Park bus stop next to the Ritz Hotel at 19:30, 20:00, 20:30, 21:15, 21:45 and 22:15 Spectacular live guided tours of London by night

Adult - £21, Child - £12

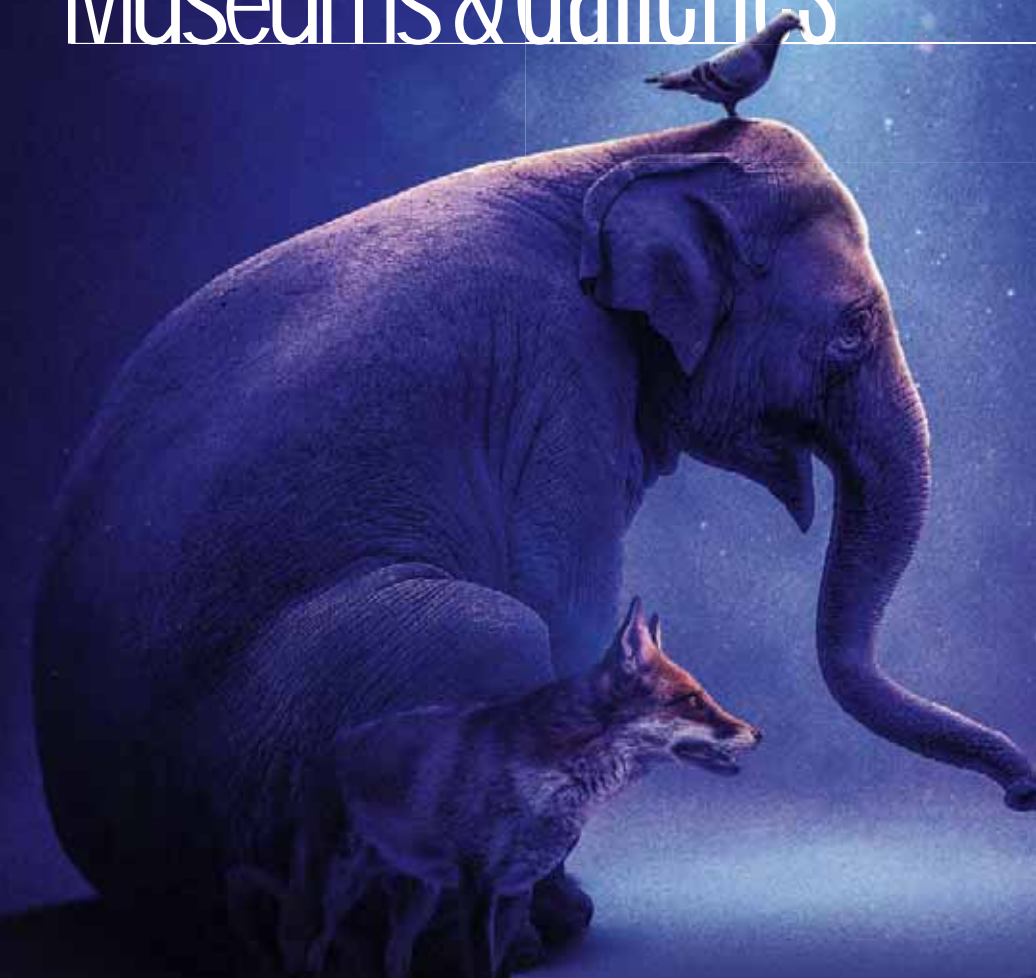
Tel: 0844 504 3285 | +44 (0)20 7183 4744

Private tours available for groups day or night



www.seelondonbynight.com

Museums & Galleries



All creatures great and small

During a day in modern London, the only animals you're likely to see are dishevelled pigeons, a Tube mouse and surly foxes. This month, however, there's something stirring in the city. *Beasts of London* at the **Museum of London** (from 5 Apr; p. 46) is a chance to discover, via a digital safari, animals that used to live here.

The exhibition is a collaboration between the museum and Guildhall School of Music & Drama. Known for its video design department, the school has worked on large projections for shows at locations including the Glastonbury Festival. In other words, this is set to be a real spectacle.

The display tells the story of London, from a small settlement to the establishment of the City (where the museum stands). It's narrated by a cast of animals, each describing London's history from their perspective. If you're with kids between 6-21 Apr, you could join workshops and listen to storytelling in *Meet the Beasts of London*, which starts at 11am every day.

Let's hope that it includes the story of Walter Rothschild, an eccentric 19th-century Londoner who used three zebras to pull his carriage down The Mall. Perhaps it will also make room for Goofy, Bobbit and Prince, who all rest in Hyde

INFO To dial the UK, remove the first 0 and add 44. Reductions may be available online. Many venues offer free general admission, but charge entry to temporary exhibitions. Map: refers to the grid coordinates on our Central London Map (p. 90)



The Royal Beasts at Tower of London

MUSEUMS

BANK OF ENGLAND MUSEUM

Explore the story of the bank from its foundation in 1694, to its status today. Mon-Fri 10am-5pm; closed bank hols. Admission free. *Threadneedle St, EC2R 8AH. T: 020-7601 5545. www.bankofengland.co.uk/museum. Station: Bank. D10.*

BODY WORLDS

FAMILY See more than 200 exhibits that explore how every part of the human body works. Sun-Thur 9.30am-7pm; Fri-Sat 9.30am-9pm. Adult £28; child £22. *London Pavilion, 1 Piccadilly Circus, W1J 0DA. T: 033-0223 3233. www.bodyworlds.co.uk. Station: Piccadilly Circus. E7.*

THE BRITISH MUSEUM

Collection of antiquities, from Rome to Egypt. **NEW From 11 Apr:** *Edvard Munch: Love and Angst*. Explores human emotions (p. 46). Sat-Thur 10am-5.30pm; Fri 10am-8.30pm. Admission free; charges for exhibitions. *Great Russell St, WC1B 3DG. T: 020-7323 8299. www.britishmuseum.org. Station: Russell Square. D7/8.*

CHURCHILL WAR ROOMS

Explore the secret bunker where Sir Winston Churchill worked during World War II. Daily 9.30am-6pm. Adult £22; child £11. *Clive Steps, King Charles St, SW1A 2AQ. T: 020-7930 6961. www.iwm.org.uk. Station: Westminster. F7.*

THE DESIGN MUSEUM

A leading museum on design and architecture. **NEW From 26 Apr:** *Stanley Kubrick: The Exhibition*. A look at the late film director (p. 48). Daily 10am-6pm. Admission free; charges for exhibitions. *224-238 Kensington High St, W8 6AG. T: 020-3862 5900. www.designmuseum.org. Station: High Street Kensington. Off map.*

THE GUARDS MUSEUM

Discover the history, stories and regimental heritage of the Foot Guards. Daily 10am-4pm. Adult £8; child free. *Wellington Barracks, Birdcage Walk, SW1E 6HQ. T: 020-7414 3271. www.theguardsmuseum.com. Station: St James's Park. D5.*

HOUSEHOLD CAVALRY MUSEUM

Go behind the scenes to see the duties of the Household Cavalry Regiments. Daily 10am-6pm. Adult £8.50; child £6.50. *Horse Guards, Whitehall, SW1A 2AX. T: 020-7930 3070. www.householdcavalrymuseum.co.uk. Station: Westminster. E7.*

Park's graveyard for pets. Created by bereaved dog lovers, this corner was used in Rothschild's time.

The **Tower of London** (p. 36) is also hosting a celebration of the natural world at the moment: **The Royal Beasts**. The Tower has been home to all sorts of animals over the centuries, including lions, tigers and bears. King John established the Royal Menagerie here in the 13th century because it was the perfect way for the rich and powerful to show off. Look out for the life-sized wire sculptures of animals dotted throughout, each the work of artist Kendra Haste.

– Neil Simpson

Beasts of London at Museum of London



'Munch captures human emotions'

Neil Simpson,
Museums & Galleries Editor

If you're a fan of the artist Edvard Munch, save yourself a trip to Norway: Oslo's Munch Museum has loaned almost 50 prints to **The British Museum** for **Edvard Munch: Love and Angst** (from 11 Apr; p. 45). These include a rare lithograph of one of the world's most recognisable pieces of art, *The Scream* (right), which is sure to make the exhibition popular. The Oslo prints are accompanied by loans from around Europe and The British Museum's own collection, in a display that highlights Munch's gift for capturing the spectrum of human emotions. Expect a spectacular show that fizzles with high drama.



JACK THE RIPPER MUSEUM

Explore rooms recreating the killer's rampage. Daily 9.30am-6.30pm. Adult £12; child £8. 12 Cable St, E1 8JG. T: 020-7488 9811. www.jacktherippermuseum.com. Station: Tower Hill. Off map.

LEIGHTON HOUSE MUSEUM

See the restored former home of Frederic, Lord Leighton. Adult £9; child free. 12 Holland Park Rd, W14 8LZ. T: 020-7602 3316. www.rbkc.gov.uk. Station: Kensington Olympia. Off map.

LONDON FILM MUSEUM

Bond in Motion displays James Bond vehicles. Daily 10am-6pm. Adult £14.50; child £9.50. 45 Wellington St, WC2E 7BN. T: 020-7836 4913. www.londonfilmmuseum.com. Station: Covent Garden. E8.

LONDON TRANSPORT MUSEUM

FAMILY Highlights include red buses and the world's first underground steam train. Daily 10am-6pm. Adult £17.50; child free. Covent Garden Piazza, WC2E 7BE. T: 020-7379 6344. www.ltmuseum.co.uk. Station: Covent Garden. E8.

MANDELA: THE OFFICIAL EXHIBITION

Learn about Nelson Mandela's life story. Daily 10am-6pm. Adult £15; child £13.50. 26 Leake St, SE1 7NN. T: 020-7928 4944. www.mandelaexhibition.com. Station: Waterloo. F8.

MUSEUM OF LONDON

FAMILY The world's largest urban history museum has thousands of exhibits in nine galleries (p. 44). Daily 10am-6pm. Admission free; charges for special exhibitions and walking tours. 150 London Wall, EC2Y 5HN. T: 020-7001 9844. www.museumoflondon.org.uk. Station: Barbican. D10.

NATURAL HISTORY MUSEUM

Astounding collections at this family-friendly museum. **To 30 Jun:** *Wildlife Photographer of the Year*. See this year's entries. Daily 10am-5.50pm. Admission free; charges for special exhibitions. Cromwell Rd, SW7 5BD. T: 020-7942 5000. www.nhm.ac.uk. Station: South Kensington. F4.

THE POSTAL MUSEUM

This museum tells the story of the 'first social network', with thousands of exhibits exploring postal history. Daily 10am-5pm. Museum only: Adult £11; child free. Museum and Mail Rail: Adult £17.05; child £10.45. 15-20 Phoenix Place, WC1X 0DA. T: 030-0030 0700. www.postalmuseum.org. Station: Russell Square. C8.

ROYAL AIR FORCE MUSEUM

National aviation museum focusing on the RAF, with aircrafts on show. Daily 10am-6pm. Admission free. Grahame Park Way, NW9 5LL. T: 020-8205 2266. www.rafmuseum.org.uk. Station: Colindale. Off map.

THE QUEEN'S GALLERY
BUCKINGHAM PALACE



Russia

Includes Russia, Royalty and the Romanovs and
Roger Fenton's Photographs of the Crimea, 1855

9 November 2018 – 28 April 2019

Museums & Galleries

SCIENCE MUSEUM

FAMILY Learn about science, technology and medicine (p. 22). Daily 10am-6pm. Admission free; charges for exhibitions. *Exhibition Rd, SW7 2DD*. T: 0333-241 4000. www.science-museum.org.uk. Station: South Kensington. F4.

VICTORIA AND ALBERT MUSEUM

The V&A's outstanding collection of arts spans 3,000 years. Sat-Thur 10am-5.45pm; Fri 10am-10pm. Admission free; charges for exhibitions. *Cromwell Rd, SW7 2RL*. T: 020-7942 2000. www.vam.ac.uk. Station: South Kensington. F4/5.

WELLCOME COLLECTION

Fascinating artefacts relating to health.

NEW From 11 Apr: *Smoke and Mirrors: The Psychology of Magic*. A look at the dark arts (p. 52). Please check for times. Admission free. *183 Euston Rd, NW1 2BE*. T: 020-7611 2222. www.wellcome-collection.org. Station: Euston. C7.

GALLERIES

THE NATIONAL GALLERY

Works by European masters. Sat-Thur 10am-6pm; Fri 10am-9pm. Admission free. *Trafalgar Square, WC2N 5DN*. T: 020-7747 2885. www.national-gallery.org.uk. Station: Charing Cross. E7.

NATIONAL PORTRAIT GALLERY

Depictions of celebrated British people. Sat-Thur 10am-6pm; Fri 10am-9pm. Admission free. *St Martin's Place, WC2H 0HE*. T: 020-7312 2463. www.npg.org.uk. Station: Leicester Square. E7.



Raise the roof

When you think of Wimbledon, what comes to mind? Strawberries and cream, or rain? Following the addition of a retractable roof to Centre Court, the British home of tennis has now installed one at No. 1 Court. The story of this is revealed in **No. 1 Court Project at Wimbledon Lawn Tennis Museum** (p. 67).

THE QUEEN'S GALLERY

This often has exhibits from the Royal Collection.

LAST CHANCE To 28 Apr: *Russia: Royalty & the Romanovs*. A look at the relationship between the British and Russian royals. Check for times and prices. *Buckingham Palace, SW1A 1AA*. T: 0303-123 7301. www.rct.uk. Station: Green Park. F7.

ROYAL ACADEMY OF ARTS

See works in all media. **To 2 Jun:** *The Renaissance Nude*. Works from the 15th and 16th centuries. Sat-Thur 10am-6pm; Fri 10am-10pm. Admission free; charges for exhibitions. *6 Burlington Gardens, W1J 0BD*. T: 020-7300 8000. www.royalacademy.org.uk. Station: Green Park. E7.

Behind the lens

Stanley Kubrick may have been born in New York, but he loved England – so much so that he moved here and used it as his base when filming. **The Design Museum** explores his work in *Stanley Kubrick: The Exhibition* (from 26 Apr; p. 45). The museum is taking advantage of the connection: sketches and material by British designers, which have never been seen in public, are on display. Discover items including a model of the spaceship from *2001: A Space Odyssey*.



Dr Johnson's House



Whisky Tasting

Thursday 25th April 7pm (Doors open at 6.30pm)

Join us for a special tasting of six premium Scotch whiskies showcasing the different regional styles and exploring the fascinating history of this increasingly popular spirit.

Presented by Tim Robbins of independent wine and spirits specialists, Nickolls and Perks, who have around 2000 whiskies in their 18th century store!

Tickets £40

17 Gough Square, EC4A 3DE

020 7353 3745

www.drjohnsonshouse.org

SPENCER HOUSE

London's most magnificent 18th-century aristocratic palace

Open to the public for guided tours on Sundays. On June 2nd, 16th & 30th we will be opening the grounds for our Garden Open Days. Group tours are available on Sundays and during the week.



+44 (0) 20 7514 1958

tours@spencerhouse.co.uk www.spencerhouse.co.uk

27 St James's Place, London, SW1A 1NR

VISIT OUR NEW ONLINE GUIDE FOR TRAVEL TIPS, ITINERARIES AND TICKETS

LONDONPLANNER.COM

Your friend in the city



THINGS TO DO | FOOD AND DRINK | TRAVEL ESSENTIALS
FIRST VISIT | ITINERARIES | ASK THE EXPERT | TICKETS AND OFFERS



BY APPOINTMENT TO HER MAJESTY QUEEN ELIZABETH II
TEA & COFFEE MERCHANTS R. TWININGS AND COMPANY LIMITED LONDON

TWININGS

216 STRAND LONDON

TASTING BAR & TEA SHOP



SHOP



TASTE



LEARN

The oldest tea shop in London.

Welcome to our 300 year old historical flagship store.

Shop favourite Twinnings blends, gifts and premium teas from around the world. sample new flavours at our state of the art Loose Tea Bar and sign up for a Masterclass with one of our expert Tea Ambassadors.

Get a
FREE tea of the
month with every
purchase over

£10

AN APPENDIX TO THE HANDBOOK OF BOTANICAL
TEA & OTHER HERBALS & FRUITED AND CORIARIACEAE

TWININGS

216 STRAND LONDON

Telephone 0207 353 3511 | Email strand@twining.com

www.twining.com/about-twinings/216-strand



Museums & Galleries

Abracadabra!

Wellcome Collection is asking an interesting question: most of us love to be tricked by magicians and illusionists, but why? ***Smoke and Mirrors: The Psychology of Magic*** (from 11 Apr; p. 48) turns a scientific eye on the rabbit in the hat which, according to Wellcome, should reveal much about how our minds work. Explore artefacts used by Harry Houdini, Derren Brown and Tommy Cooper among others. The exhibition is split into three parts: The Séance, Misdirection and Mentalism. The latter reveals how using psychology can help magicians convince us they're inside our heads.



TATE BRITAIN

The nation's leading collection of British art. **To 11 Aug:** *The EY Exhibition: Van Gogh and Britain*. Explores van Gogh's love for Britain and his impact on British artists, via more than 45 works. Daily 10am-6pm. Admission free; charges for special exhibitions. *Millbank, SW1P 4RG*. T: 020-7887 8888. www.tate.org.uk. Station: Pimlico. G8.

TATE MODERN

See world-class, international modern art in the transformed Bankside Power Station by the River Thames. **To 6 May:** *Pierre Bonnard: The Colour of Memory*. Celebrating the late French avant-garde painter. Sun-Thur 10am-6pm; Fri-Sat 10am-10pm. Admission free. *Bankside, SE1 9TG*. T: 020-7887 8888. www.tate.org.uk. Station: Southwark. E9.

National Portrait Gallery

Hang out with the greats.
Meet the locals.

Come face to face with British history.
npg.org.uk

Free admission | Leicester Square Charing Cross

Winston Churchill (detail) by Sir William Orpen, 1916, art. by the Churchill Charities Trust. Image © National Portrait Gallery, London

Westminster Abbey



Feel
wonder
first
hand



Members go free

Book online to save at westminster-abbey.org

TATE BRITAIN

27 MAR – 11 AUG 2019

THE EY EXHIBITION

VAN GOGH AND BRITAIN

The EY Tate
Arts Partnership



PIMLICO  FREE FOR TATE MEMBERS

With additional support from the
Van Gogh Exhibition Supporters
Circle, Tate International Council
and Tate Members

Media partner

THE SUNDAY TIMES
THE SUNDAY TIMES

Vincent van Gogh *Self-Portrait Autumn 1889* (detail)
National Gallery of Art, Washington, Collection of
Mr and Mrs John Hay Whitney, 1968, 74.5



Entertainment



Holding out for a hero

Frasier star Kelsey Grammer is no stranger to theatre, and this month he is returning to London for the musical *Man of La Mancha*.

The story, loosely based on *Don Quixote* by Miguel de Cervantes, comes to the **London Coliseum** (from 26 Apr).

The classic novel influenced a play made for television in 1959, which in turn inspired a 1965 Broadway musical that scooped five Tony Awards before transferring to the West End.

The show is set in a 16th-century dungeon as Cervantes and his servant await trial for treason during the Spanish Inquisition. As prisoners attempt to steal Cervantes' possessions, he begins acting out his unfinished novel, *Don Quixote*, transforming himself into a knight called Quijano.

As he becomes increasingly deluded, he renames himself Don Quixote de la Mancha, and sets off on an adventure with his servant Sancho Panza – with comical results.

This show-within-a-show tells a tale of love, loyalty and knighthood, and explores themes of madness and reality. Director Lonny Price (who was behind *Sunset Boulevard* at the London Coliseum) says: 'I think [this production] is inspiring. We could use some heroes right about now, for people to say "fight the unbeatable foe and dream the impossible dream".'

Grammer (whose character Frasier often waxed lyrical about London's theatres) plays the lead, Cervantes and the Don. The soprano Danielle de Niese plays Aldonza and Dulcinea, while Nicholas Lyndhurst (*Only Fools and Horses*) plays the Innkeeper and the Captain.

Produced by Michael Linnit and Michael Grade – who worked on *Chess*, *Carousel* and *Sweeney Todd* – the musical includes songs performed by the English National Opera's orchestra.

– Sarah Riches

www.eno.org



London Coliseum



LONDON COLISEUM © ENO, KELSEY GRAMMER
COURTESY OF LONDON COLISEUM

INFO To dial the UK, remove the first 0 and add 44. Map: refers to the grid coordinates on our Central London Map (p. 90). Please check online for venue's complete listings

MUSICALS & PERFORMANCES

ALADDIN

FAMILY This West End hit with lyrics by Tim Rice includes songs such as *A Whole New World*. Please check for times. Tickets £27.25-£99.75. *Prince Edward Theatre, Old Compton St, W1D 4HS*. T: 0844-482 5151. www.aladdinthemusical.co.uk. Station: Tottenham Court Road. D7.

COME FROM AWAY

A tight-knit community on a Canadian island hosts 7,000 stranded passengers after the 9/11 US terrorist attack. Check for times. Tickets £24-£108. *Phoenix Theatre, 110 Charing Cross Rd, WC2H 0JP*. T: 0843-316 1082. www.phoenixtheatre.london.co.uk. Station: Tottenham Court Road. D7.

EVERYBODY'S TALKING ABOUT JAMIE

Feel-good musical about a boy who overcomes bullies. Check for times. Tickets £20-£85. *Apollo Theatre, 31 Shaftesbury Ave, W1D 7ES*. T: 0330-333 4809. www.everybodystalkingaboutjamie.co.uk. Station: Piccadilly Circus. E7.

FOLLIES

LAST CHANCE To 6 Apr: Award-winning musical with songs by Stephen Sondheim. Check for times and prices. *National Theatre, SE1 9PX*. T: 020-7452 3000. www.nationaltheatre.org.uk. Station: Waterloo. E8.

HAMILTON

Award-winning hip-hop musical based on the story of America's founding father, Alexander Hamilton. Please check for times and prices. *Victoria Palace Theatre, Victoria St, SW1E 5EA*. T: 0844-482 5138. www.hamiltonthemusical.co.uk. Station: Victoria. F6.

LES MISÉRABLES

The world's longest-running musical is set in post-revolutionary France. Please check for times. Tickets £42.25-£177.25. *Queen's Theatre, 51 Shaftesbury Ave, W1D 6BA*. T: 0844-482 5160. www.lesmis.com. Station: Leicester Square. D8.

THE LION KING

FAMILY Wonderful adaptation of the Disney film with great costumes and puppetry, plus Elton John's original score. Check for times. Tickets £23-£200.25. *Lyceum Theatre, 21 Wellington St, WC2E 7RQ*. T: 0844-871 3000. www.thelionking.co.uk. Station: Covent Garden. E8.

MAMMA MIA!

A tribute to the songs of ABBA. Please check for times. Tickets £27.25-£127.25. *Novello, Aldwych, WC2B 4LD. T: 0844-482 5115. www.mamma-mia.com. Station: Covent Garden/Temple. E8.*

MATILDA THE MUSICAL

FAMILY Show based on Roald Dahl's book about a girl with magic powers. Check for times. Tickets £25-£122.50. *Cambridge Theatre, 32-34 Earlham St, WC2 9HU. T: 0844-412 4652. www.matildathe-musical.com. Station: Covent Garden. D8.*

MOTOWN THE MUSICAL

LAST CHANCE To 20 Apr: Feel-good musical based on the story of Motown Records. Please check for times and prices. *Shaftesbury Theatre, 210 Shaftesbury Ave, WC2H 8DP. T: 020-7379 5399. www.shaftesburytheatre.com. Station: Tottenham Court Road. D8.*

9 TO 5 THE MUSICAL

Fun Dolly Parton musical about women seeking revenge on their sexist boss. Check for times. £25-£150. *Savoy Theatre, Strand, WC2R 0ET. T: 0844-871 7687. www.9to5themusical.co.uk. Station: Covent Garden. E8.*

ONLY FOOLS AND HORSES: THE MUSICAL

Comedy based on the TV sitcom about a loveable wheeler-dealer. Mon-Sat 7.30pm; Wed & Sat 2.30pm. Tickets £15-£100. *Theatre Royal Haymarket, Haymarket, SW1Y 4HT. T: 020-7930 8800. www.trh.co.uk. Station: Piccadilly Circus. E7.*

THE PHANTOM OF THE OPERA

A mysterious masked man haunts the Paris Opera House. Please check for times. Tickets £25-£175. *Her Majesty's Theatre, 57 Haymarket, SW1Y 4QL. T: 0844-412 2707. www.thephantomoftheopera.com. Station: Piccadilly Circus. E7.*

SCHOOL OF ROCK: THE MUSICAL

FAMILY A failed rock star tries to inspire his students. Please check for times. Tickets £15-£150. *Gillian Lynne Theatre, 166 Drury Lane, WC2B 5PF. T: 020-7452 3000. www.schoolofrockthemusical.com. Station: Covent Garden. D8.*

THRILLER LIVE

A dazzling celebration of Michael Jackson's career. Check for times and prices. *Lyric, 29 Shaftesbury Ave, W1D 7ES. T: 0844-482 9674. www.thrillerlive.com. Station: Piccadilly Circus. E7.*



'Watch acrobats and cabaret'

Sarah Riches, Entertainment Editor

Now in its 11th year, **Underbelly Festival** returns to the South Bank (from 5 Apr) with more than 70 shows including circus, comedy and burlesque. Watch acrobatics by Gravity & Other Myths, the London premiere of the *Little Death Club* cabaret, and Yummy, an adults-only drag show. Kids can listen to readings from *The Gruffalo* and watch a new version of *The Wind in the Willows*. www.underbellyfestival.com



PHOTO © STEVE ULLATHORNE

THE MUSICAL PHENOMENON



M. Les Misérables

QUEEN'S THEATRE

Original Production
Until 13th July

GIELGUD THEATRE

All-Star Staged Concert
From 10th August to 30th November

QUEEN'S THEATRE

The Acclaimed New Production
Opens in December

lesmis.com

TM © 1986 CMOL

TINA: THE TINA TURNER MUSICAL

A musical based on the life of Tina Turner, including all her hits. Check for times. Tickets £10-£149.50. *Aldwych Theatre, 9 Aldwych, WC2B 4DF. T: 0845-200 7981. www.tinathe musical.com. Station: Covent Garden. D8.*

WAITRESS

Waitress Jenna dreams of a way out of her small town. Please check for times. Tickets £19.50-£135. *Adelphi Theatre, 409-412 Strand, WC2R 0NS. T: 0844-579 0094. www.waitressthemusical.co.uk. Station: Charing Cross. E8.*

WICKED

FAMILY The brilliant backstory of the witches of Oz. Mon-Sat 7.30pm; Wed & Sat 2.30pm. Tickets £24.25-£202.75. *Apollo Victoria Theatre, 17 Wilton Rd, SW1V 1LG. T: 0844-871 3001. www.wickedthemusical.co.uk. Station: Victoria. F7.*

PLAYS

ALL ABOUT EVE

Gillian Anderson and Lily James star in this tale about a ruthless star. Please check for times and prices. *Noël Coward Theatre, St Martin's Lane, WC2N 4AU. T: 0844-482 5140. www.delfontmackintosh.co.uk. Station: Leicester Square. E8.*

ALL MY SONS

NEW From 13 Apr: Arthur Miller's classic, set in 1940s America (p. 62). Please check for times. Ticket £12-£65. *The Old Vic, The Cut, SE1 8NB. T: 0844-871 7628. www.oldvictheatre.com. Station: Waterloo. F9.*



American idol

America's former First Lady returns to London to promote her book. After selling out the Southbank Centre, she's coming to **The O2** (14 Apr) with **Becoming: An Intimate Conversation with Michelle Obama**. www.theo2.co.uk

BETRAYAL

Tom Hiddleston stars in Harold Pinter's play about a seven-year romance. Please check for times and prices. *Harold Pinter Theatre, Panton St, SW1Y 4DN. T: 0844-871 7622. www.atgtickets.com. Station: Piccadilly Circus. E7.*

THE COMEDY ABOUT A BANK ROBBERY

Six incompetent crooks are desperate to get hold of a diamond. Please check for times. Tickets £10-£73.75. *Criterion Theatre, 218-223 Piccadilly, W1V 9LB. T: 0844-815 6131. www.thecomedyaboutabankrobbery.com. Station: Piccadilly Circus. E7.*

Making a splash

Watch near-naked dancers frolic in 7,500 litres of water on a flooded stage at **Sadler's Wells** in **Vessel** (16-17 Apr; p. 65), a contemporary dance choreographed by the Olivier Award-winner Damien Jalet.



THE PHANTOM OF THE OPERA



THE BRILLIANT ORIGINAL

AT HER MAJESTY'S THEATRE
thephantomoftheopera.com

THE CURIOUS INCIDENT OF THE DOG IN THE NIGHT-TIME

LAST CHANCE To 27 Apr: An autistic boy searches for a missing dog. Check for times and prices. *Piccadilly Theatre, 16 Denman St, W1D 7DY. T: 0844-871 7630. www.piccadillytheatre.org. Station: Piccadilly Circus. E7.*

FAULTY TOWERS: THE DINING EXPERIENCE

Seventies-style dining and interactive comedy in this theatrical experience based on the TV sitcom. Please check for times. Tickets £75-£80. *Radisson Blu Edwardian, 9-13 Bloomsbury St, WC1B 3QD. T: 0845-154 4145. www.faultytowers-uk.com. Station: Tottenham Court Road. D7.*

HARRY POTTER AND THE CURSED CHILD

Parts I and II of the adaptation of JK Rowling's story. Harry works for the Ministry of Magic, but his son grapples with a legacy he never wanted. *Palace Theatre, 113 Shaftesbury Ave, W1D 5AY. T: 0300-333 4813. www.harrypottertheplay.com. Station: Leicester Square. D7.*

THE MOUSETRAP

A murderer strikes at a party in a country house in Agatha Christie's long-running whodunnit. Please check for times and prices. *St Martin's Theatre, West St, WC2H 9NZ. T: 0844-499 1515. www.the-mousetrap.co.uk. Station: Leicester Square. D7.*

PAH-LA

NEW 3-27 Apr: Abhishek Majumdar's new play is based on real-life events in Tibet in 2008 (p. 65). Check for times and prices. *Royal Court Theatre, Sloane Square, SW1W 8AS. T: 020-7565 5000. www.royalcourttheatre.com. Station: Sloane Square. G6.*



Harry Potter and the Cursed Child won a record-breaking nine awards at the Laurence Olivier Awards in 2017

THE PLAY THAT GOES WRONG

Slapstick comedy about an amateur drama society staging a murder mystery. Please check for times. Tickets £20-£72. *Duchess Theatre, 3-5 Catherine St, WC2B 5LA. T: 0844-482 9672. www.theplaythatgoeswrong.com. Station: Covent Garden. D8.*



‘Astonishing and Unmissable.’

Sunday Express

The acclaimed National Theatre production

THE CURIOUS INCIDENT

OF THE DOG IN THE NIGHT-TIME

A NEW PLAY BY
SIMON STEPHENS

BASED ON THE BEST-SELLING NOVEL BY
MARK HADDON

DIRECTED BY
MARIANNE ELLIOTT



Arts Council
ENGLAND

Now playing at the Piccadilly Theatre

CuriousOnStage.com

Preferred
Card
Partner





'BELIEVE
THE HYPE'

NEW YORK POST



ROALD DAHL'S

Matilda

THE MUSICAL

MatildaTheMusical.com

CAMBRIDGE THEATRE, London, WC2H 9HU

#MatildaPose



Supported using public funding by
**ARTS COUNCIL
ENGLAND**

WITNESS FOR THE PROSECUTION

Agatha Christie's courtroom drama is set in a real former courtroom. Please check for times. Tickets £10-£79.50. *County Hall, Belvedere Rd, SE1 7PB*. T: 0844-815 7141. www.witnesscountyhall.com. Station: Waterloo. F8.

THE WOMAN IN BLACK

A lawyer visits a remote house to settle affairs after a woman's death. Please check for times. Tickets £21.50-£52. *Fortune Theatre, Russell St, WC2B 5HH*. T: 0844-871 7626. www.thewomaninblack.com. Station: Covent Garden. D8.

CONCERTS: CLASSICAL

ROYAL ALBERT HALL

17 Apr: An Evening with Alfie Boe. **19 Apr:** *Messiah*. **23 Apr:** Classic FM Live. *Kensington Gore, SW7 2AP*. T: 020-7589 8212. www.royalalberthall.com. Station: South Kensington. G4.

ROYAL FESTIVAL HALL

2 & 7 Apr: *Bach's St John's Passion*. **13 Apr:** *Back to the Future in Concert*. *Southbank Centre, Belvedere Rd, SE1 8XX*. T: 020-3879 9555. www.southbankcentre.co.uk. Station: Waterloo. E8.



Here come the sons

They say truth is stranger than fiction, which is the case for Arthur Miller's play **All My Sons**, which is based on a true story. The Tony Award-winning drama, which premiered on Broadway in 1947 and later became a film, is coming to **The Old Vic** (from 13 Apr; p. 58). The Academy Award and Golden Globe-winning actress Sally Field (*Forrest Gump*) and Bill Pullman (*Independence Day*) star. They have built a home, raised sons and established a business, but is that all set to change?

★★★★★
DAILY TELEGRAPH, METRO, THE SUN,
DAILY EXPRESS, DAILY MAIL

‘AN INSPIRATIONAL STORY...
A WHIRLWIND OF ELATION’
PAUL TAYLOR, INDEPENDENT

Tina

THE TINA TURNER MUSICAL

PRESENTED IN ASSOCIATION WITH TINA TURNER

TinaTheMusical.com | ALDWYCH THEATRE | Stage

SALLY FIELD COURTESY OF THE OLD VIC

ZSL
LONDON
ZOO

Really great days
out that make a
real difference

window seat
@zslondonzoo
#ZooLife

Experience it for yourself at zsl.org/london

📍 Camden Town | Regent's Park

ZSL | LET'S WORK
FOR WILDLIFE



Theatreland map



London's major theatre and music venues can be located on the map above using the grid reference in the key below.

Visit London has a secure online booking service for all major current and forthcoming theatre productions.

To book tickets go to www.visitlondon.com

Key to Theatres

1 Adelphi	B2	13 Duchess	A/B3
2 Ambassadors	A2	14 Duke of York's	B2
3 Aldwych	A3	15 Fortune	A2/3
4 Apollo Theatre	B1	16 Garrick	B2
5 Apollo Victoria	F	17 Gielgud	A1
6 Arts	B2	18 Gillian Lynne	A2
7 Barbican Centre	G	19 Harold Pinter	B1
8 Cambridge	A2	20 Her Majesty's	B1
9 Charing Cross Theatre	B2	21 King's Head Theatre	E
10 Criterion	B1	22 Leicester Square Theatre	B1
11 Dominion	A1	23 Little Angel Theatre	E
12 Donmar Warehouse	A2		

24 London Palladium	A1	40 St Martin's	A2
25 Lyceum	B3	41 Savoy	B2
26 Lyric	B1	42 Shaftesbury	A2
27 Menier Chocolate Factory	D	43 Shakespeare's Globe... ..	D
28 National Theatre	C3	44 Soho Theatre	B3
29 Noël Coward	B2	45 Theatre Royal Drury Lane	A3
30 Novello	A3	46 Theatre Royal Haymarket	B1
31 Old Red Lion	E	47 Trafalgar Studios	C2
32 Old Vic	C4	48 Vaudeville	B2
33 Palace	A1	49 Victoria Palace	F
34 Phoenix	A1	50 Waterloo East Theatre	C4
35 Piccadilly	B1	51 Wyndham's	B2
36 Playhouse	C2	52 Young Vic	C4
37 Prince Edward	A1		
38 Prince of Wales	B1		
39 Queen's	B1		

Key to Dance, Music and Multi-arts Venues

53 Barbican Hall	G	58 St James's Piccadilly church	B1
54 London Coliseum	B2	59 St Martin-in-the-Fields church	B2
55 Peacock	A3	60 Sadler's Wells	E
56 Ronnie Scott's	A1	61 Southbank Centre	C3
57 Royal Opera House	A2		



Pressure point

Abhishek Majumdar's controversial play, which the **Royal Court Theatre** was persuaded to drop last year, returns to London. ***Pah-La*** (3-27 Apr; p. 60) is about a young woman in a Tibetan village who runs away from her father to become a Buddhist nun. The British Council was accused of censorship after encouraging the theatre to postpone the play in 2018, due to concerns about damaging relations between the UK and China.

CONCERTS: POP, JAZZ & WORLD

THE O2

1-11 Apr: Drake. **6 Apr:** UB40. **16-19 Apr:** Shawn Mendes. *Peninsula Square, SE10 OAX.* T: 0844-856 0202. www.theo2.co.uk. Station: North Greenwich. Map inset.

DANCE

ROYAL OPERA HOUSE

To 11 Jun: *Romeo and Juliet*. Shakespeare's star-crossed lovers encounter passion and tragedy in Kenneth MacMillan's 20th-century ballet masterpiece. Please check for times and prices. *Bow St, WC2E 9DD.* T: 020-7304 4000. www.roh.org.uk. Station: Covent Garden. D8.

SADLER'S WELLS

16-17 Apr: *Vessel* (p. 58). *Rosebery Ave, EC1R 4TN.* T: 020-7863 8000. www.sadlerswells.com. Station: Angel. Off map.

CHILDREN & FAMILIES

MY FIRST BALLET: SLEEPING BEAUTY

16-27 Apr: English National Ballet presents the classic story with Tchaikovsky's melodies. Check for times. Tickets from £10. *The Peacock, Portugal St, WC2A 2HT.* T: 020-7863 8222. www.peacocktheatre.com. Station: Holborn. D8.

THE POLAR BEARS GO, GO GO!

LAST CHANCE To 28 Apr: Two loveable, hapless polar bears have a holiday adventure. Please check for times and prices. *Unicorn Theatre, 147 Tooley St, SE1 2HZ.* T: 020-7645 0560. www.unicorntheatre.com. Station: London Bridge. E11.

In the heart of Leicester Square

Open 7 days a week

TKTS

OFFICIAL LONDON THEATRE .com

Last minute & discount theatre tickets

Sport

The race is on

This year the **London Marathon** (28 Apr) passes a significant milestone: the world-famous race sees the amount of money raised for charities in its 38-year history passing £1 billion.

'This is a phenomenal achievement and part of what makes the London Marathon unique. No other mass participation event comes anywhere near this kind of fundraising,' says the Marathon's co-founder, Hugh Brasher.

Expect a potential head-to-head between two legends of athletics: Kenya's defending champion Eliud Kipchoge versus Britain's Sir Mo Farah, who finished third last year. Top of the women's field is last year's winner, the Kenyan ace Mary Keitany. With her personal best time of 2:17:01,

she'll again be aiming to beat the women's Marathon record of 2:15:25, set by Paula Radcliffe back in 2003.

Another familiar face is the multiple world and Paralympic champion David Weir, making his 20th consecutive appearance. Can he make it nine victories in the wheelchair race? 'It's amazing to be getting ready for my 20th race,' he says. 'It has been an incredible journey from my first London Marathon back in 2000 and I feel very proud that I have not missed a single race since that first one.'

Many non-professional runners wear fancy dress and are cheered on by spectators as they pass landmarks such as the Tower of London and the Houses of Parliament. Plan your route and make the most of the unique experience. www.virginmoneylondonmarathon.com

London
Marathon



INFO To dial the UK, remove the first 0 and add 44. Map: refers to the grid coordinates on our Central London Map. For more sports events and information, see www.visitlondon.com/events

WATCH FOOTBALL

Premier League fixtures (subject to change):

1 Apr: Arsenal vs Newcastle. **20 Apr:** Arsenal vs Crystal Palace. *Emirates Stadium, see 'Arsenal Stadium Tour' for address.*

6 Apr: Chelsea vs West Ham. **20 Apr:** Chelsea vs Burnley. *Stamford Bridge, see 'Chelsea FC Stadium Tour' for address.*

6 Apr: Tottenham vs Brighton. **13 Apr:** Tottenham vs Huddersfield. **27 Apr:** Tottenham vs West Ham. *Wembley Stadium, see 'The Wembley Stadium Tour' for address. T: 0344-844 0102. www.tottenhamhotspur.com.*

20 Apr: West Ham vs Leicester. *London Stadium, Queen Elizabeth Olympic Park, E20 2ST. T: 020-8548 2748. www.whufc.com.*

ROWING

7 Apr: Oxford & Cambridge Boat Races. 2.15pm & 3.15pm. *Putney to Mortlake. www.theboatraces.org.*

TOURS & MUSEUMS

ARSENAL STADIUM TOUR & MUSEUM

Self-guided audio tours include the changing rooms, players' tunnel and the museum. Please check for times. Adult £23; child £15. *Emirates Stadium, Drayton Park, N5 1BU. T: 020-7619 5000. www.arsenal.com. Station: Arsenal/Holloway Road/Finsbury Park. Off map.*

CHELSEA FC STADIUM TOUR & MUSEUM

Guided one-hour multimedia tour including dressing room, players' tunnel and press room, plus the museum. Please check for times. Adult £24; child £15. *Stamford Bridge, Fulham Rd, SW6 1HS. T: 0371-811 1955. www.chelseafc.com. Station: Fulham Broadway. Off map.*

LORD'S TOUR & MCC MUSEUM

Tour the home of cricket. Check for dates & times; booking essential. Tour £25; child £16. *St John's Wood Rd, NW8 8QN. T: 020-7616 8595. www.lords.org. Station: St John's Wood. C4.*

KIA OVAL TOUR

Tour the famous cricket ground. Please check for times. Adult £15; child £5. *Kennington, SE11 5SS. T: 020-3946 0100. www.kiaoval.com. Station: Oval. Off map.*

TWICKENHAM WORLD RUGBY MUSEUM & STADIUM TOUR

The world's largest stadium dedicated to rugby. Check for times and days. Adult £25; child £15. *Twickenham Stadium, Whitton Rd, TW2 7BA. T: 020-8892 8877. www.worldrugbymuseum.com. Station: Twickenham. Off map.*

THE WEMBLEY STADIUM TOUR

The UK's largest sports and music venue. Check for times. Adult £19; child £12. *Olympic Way, HA9 0WS. T: 0800-169 9933. www.wembleystadium.com. Station: Wembley Park. Off map.*

WIMBLEDON LAWN TENNIS MUSEUM & TOUR

See trophies in the museum and tour Centre Court (p. 48). Daily 10am-5pm. Adult £25; child £15. *All England Lawn Tennis and Croquet Club, Church Rd, SW19 5AE. T: 020-8946 6131. www.wimbledon.com. Station: Southfields. Off map.*



'Its all about jaw-dropping skills'

Emma Levine, Sport Editor

It's not about league points or trophies when you watch the **Harlem Globetrotters** at the **The O2** (30 Apr) – entertainment is always at the top of the list. It's all about jaw-dropping skills and trick shots, slick comedy and slam dunks. You might get to see 6ft 9in Hammer Harrison but it's not only the guys in action; the Globetrotters has had nine women wearing the colours since 1985. www.theo2.co.uk



Shopping

MAJOR STORES

FORTNUM & MASON

Established in 1707, this historic store is famed for its food hall, hampers and china. Don't miss the Diamond Jubilee Tea Salon. *181 Piccadilly, W1A 1ER. T: 0845-300 1707. www.fortnumandmason.com. Station: Green Park. E7.*

HARRODS

One of the world's most famous stores includes top fashion labels and jewellery, plus many bars, restaurants and a food hall. *87-135 Brompton Rd, SW1X 7XL. T: 020-7730 1234. www.harrods.com. Station: Knightsbridge. F5.*

JOHN LEWIS

Established more than 150 years ago, this store sells everything from homeware to hats. *300 Oxford St, W1A 1EX (and branches). T: 020-7629 7711. www.johnlewis.com. Station: Oxford Circus. D6.*

LIBERTY

Behind a mock-Tudor exterior lies fashion, beauty, haberdashery and fabrics adorned with the famous Liberty print. *Great Marlborough St, W1B 5AH. T: 020-7734 1234. www.liberty.co.uk. Station: Oxford Circus. B5.*

SELFRIDGES

This department store is great for fashion, beauty and food and is home to the huge Denim Studios. *400 Oxford St, W1A 1AB. T: 0800-123 400. www.selfridges.com. Station: Bond Street. D6.*

MALLS & FACTORY OUTLETS

BICESTER VILLAGE

A haven in Oxfordshire, which showcases fashion brands at a reduced price. Please check for times. *Bicester, Oxfordshire, OX26 6WD. T: 01869-323 200. www.bicestervillage.com. Station: Marylebone to Bicester Village. Bus: Shopping Express Village coach from London hotels. Off map.*

ICON AT THE O2

This new outlet mall offers discounts on designer brands. *The O2, Pensinsula Square, SE10 0DX. T: 020-8463 2000. www.iconattheo2.co.uk. Station: North Greenwich. Map inset.*



Have a fab time

If you're a fan of the Fab Four, **London Beatles Store** (p. 70) is a must, as you can browse through autographs, T-shirts, badges, guitar straps and mugs. The staff are experts on all things Beatles – they can even assist you if you're after tours or tickets. It's also near John Lennon's former home on Montagu Square – look out for its Blue Plaque.

WESTFIELD LONDON

This huge mall has luxury and high-street shops, plus many restaurants. *Ariel Way, W12 7GF. T: 020-3371 2300. www.uk.westfield.com. Station: Shepherd's Bush. Map inset.*

WESTFIELD STRATFORD CITY

This vast shopping centre boasts 270 shops, cafés and restaurants. *2 Stratford Place, Montfichet Rd, E20 1EJ. T: 020-8221 7300. www.uk.westfield.com/stratfordcity. Station: Stratford. Map inset.*

SPECIALIST STORES

BUCKINGHAM PALACE SHOP

Royal souvenirs. *7 Buckingham Palace Rd, SW1W 0PP. T: 020-7839 1377. www.royalcollectionshop.co.uk. Station: Victoria. F6.*

FOYLES

One of the city's oldest bookshops, now located in the former Central Saint Martins building. *107 Charing Cross Rd, WC2H 0DT. T: 020-7437 5660. www.foyles.co.uk. Station: Tottenham Court Road. B5.*

INFO To dial the UK, remove the first 0 and add 44. Map: refers to the grid coordinates on our Central London Map (p. 90). Normal opening hours are approximately 10am-6pm (Sun 11am-5pm); some stores open until late on Thur

Fashioning a store

Thomas Heatherwick has made the capital cool: the designer introduced the new-style Routemaster bus, The Rolling Bridge in Paddington and now he's transformed a district in King's Cross into **Coal Drops Yard**. Established in 1850, it used to house eight million tonnes of coal but now, with its slick design, vintage ironwork and original Victorian coal drops, it is one of the city's most exciting shopping areas.

As the internet has transformed the way we shop and contributed to the decline of sales on the high street, Heatherwick has created more than just a shopping destination. Set in historic buildings and arches near Regent's Canal, this isn't a traditional mall but a shopping street – there are no cars and the best way to enter is along a towpath, which welcomes you into a cobble courtyard and canalside shops. The emphasis is on accessibility, community spirit and modern design.

Heatherwick says: 'It has been a huge privilege to work on Coal Drops Yard, not only because it's the studio's first major building completed

in London, but also because it's King's Cross, where my studio has been based for the past 17 years.'

The makeover sees it welcoming more than 50 stores, including Paul Smith, Fred Perry, Cubitts and Wolf & Badge. There are also independent options such as Boutique by Shelter, a charity shop specialising in vintage clothes, and Finisterre, a Cornish brand focusing on ethical fashion. With Lower Stable Street opening – an area dedicated to pop-up shops and workshops – it will always feel like a fresh shopping experience.

While you're there, don't forget to take in the beauty of Heatherwick's creation – no two stores have been designed the same. He says: 'We've been excited to open up the site, create new spaces and allow everyone to experience these characterful buildings.' The 'kissing' rooftop is a highlight and proves that shopping can be a beautiful experience. www.coaldropsyard.com



Kohinoor Sahota,
Shopping Editor



Coal Drops Yard

Shopping

HAMLEYS

One of the world's biggest toy shops, with seven floors selling everything that a child could ever dream of. It also has costumed entertainers. 188-196 Regent St, W1B 5BT. T: 0371-704 1977. www.hamleys.com. Station: Oxford Circus. D7.

IT'S ONLY ROCK 'N' ROLL

Shop selling rock memorabilia, T-shirts, autographs, photographs and more. 230 Baker St, NW1 5RT. T: 020-7224 0277. www.itsonlyrocknrollondon.co.uk. Station: Baker Street. A3.

JAPAN CENTRE

Seek out this subterranean shop for authentic sushi, hot dishes, Japanese ingredients and ceramics. 35b Panton St, SW1Y 4EA (and branches). T: 020-3405 1246. www.japancentre.com. Station: Piccadilly Circus. E7.

LONDON BEATLES STORE

London's only Beatles shop stocks new and original memorabilia, from T-shirts to badges (p. 68). 231-233 Baker St, NW1 6XE. T: 020-7935 4464. www.beatlesstorelondon.co.uk. Station: Baker Street. A3.

LONDON GLASSBLOWING STUDIO

Watch glass objects being created as you browse pieces for sale. You can even take part in a glassblowing class. 62-66 Bermondsey St, SE1 3UD. T: 020-7403 2800. www.londonglassblowing.co.uk. Station: London Bridge. D8.

TWININGS

There are more than 100 varieties of teas and infusions at one of the oldest shops in London. It's also home to a small but fascinating tea museum. 216 Strand, WC2R 1AP. T: 020-7353 3511. www.twiningso.co.uk. Station: Temple. D9.

WE BUILT THIS CITY

This souvenir shop puts a quirky spin on classic souvenirs. The model pigeons and illustrated cityscapes are popular. 56 Carnaby St, W1F 9QF. T: 020-3642 9650. www.webuilt-thiscity.com. Station: Oxford Circus. B5.

THE WHISKY EXCHANGE

The biggest range of whiskies and fine spirits in London, with more than 1,000 varieties. 2 Bedford St, WC2E 9HH. T: 020-7403 8688. www.thewhiskyexchange.com. Station: Charing Cross. C6.

BUCKINGHAM PALACE Shop



Visit our shop at 7 Buckingham Palace Road, SW1W 0PP or browse online at www.royalcollectionshop.co.uk



ROYAL
COLLECTION
TRUST

Save 10% Present this
advert in store

London Beatles Store

OPEN DAILY
10am - 6:30pm

231/233 BAKER ST
LONDON NW1 6XE
TEL: 020 7935 4464

www.beatlesstorelondon.co.uk
sgtpepper@beatlesstorelondon.co.uk

We stock the world's largest range of BEATLES merchandise including T-shirts & clothing, mugs, pins, bags, homeware, wallets, posters, keyrings, accessories, collectibles, records, photographs, jigsaws, games and autographs.

You can also find out about Beatles sites.



IT'S ONLY ROCK 'N' ROLL

LONDON'S ONLY ROCK 'N' ROLL MEMORABILIA STORE

230 BAKER ST LONDON NW1 5RT
www.itsonlyrocknrolllondon.co.uk
TEL: 020 7224 0277 OPEN DAILY 10AM - 6:30PM

If you love The Rolling Stones, The Who, Queen, David Bowie, Pink Floyd, AC/DC, Led Zeppelin, Elvis, Jimi Hendrix, Metallica, The Clash, Sex Pistols, Iron Maiden, The Doors, Oasis, Nirvana etc. this is the place for you!

HOP-ON-HOP-OFF WINDSOR SIGHTSEEING BUS TOURS

Hop on board to discover the quintessentially British and very royal town of Windsor. Buy tickets online or from our friendly staff at any of our bus stops.

- + Only 30 minutes by train from London
- + Free WiFi + 10 languages + 10 bus stops

BOOK YOUR TICKET TODAY
THEORIGINALTOUR.COM/WINDSOR

Eating out

Hicce



Flying the flag

Review

Even before you look at the menu, **Hicce** (pronounced 'ee chay') has all the right ingredients: a celebrity chef and a hip location. The modern British restaurant is led by Pip Lacey, the winner of BBC's *Great British Menu* and the former head chef of Angela Hartnett's Michelin-starred Murano.

The name (Latin for 'current, in the moment') is apt as it's located in London's hottest area: Coal Drops Yard. The site is a former Victorian coal store, which has been brought back to life by Heatherwick Studio (p. 69). You'll find Hicce above the designer shop Wolf & Badger, with large arched windows overlooking Granary Square.

Exposed brick walls are a nod to its past but otherwise Hicce ticks the boxes for a modern restaurant: counter seating at the bar, an open kitchen and plants dotted around. It also has wooden chairs – which may discourage some diners from lingering.

Dishes are grilled, smoked on a wood fire and cooked over holm oak charcoal. After starting with cheese, charcuterie and pickles, try its signature dish: hot sticks. My guest loved the skewer of beef, mushroom, pak choi and cashew.

Other dishes are simple, yet they still surprise – think beer bread; chargrilled Brussels sprouts; and mackerel, radicchio and kumquats. Save space for the pineapple, coconut sorbet and coriander. The menu is tweaked daily.

Cocktails also feature unusual ingredients such as yuzu purée, cloudberry liqueur and pandan (a fragrant South East Asian plant). The rest of the drinks menu is just as contemporary, so as well as non-alcoholic and local beers, sake and biodynamic wines, you can sample teas sourced from Asia by the Rare Tea Company, ensuring you'll have a rare old time. – Sarah Riches

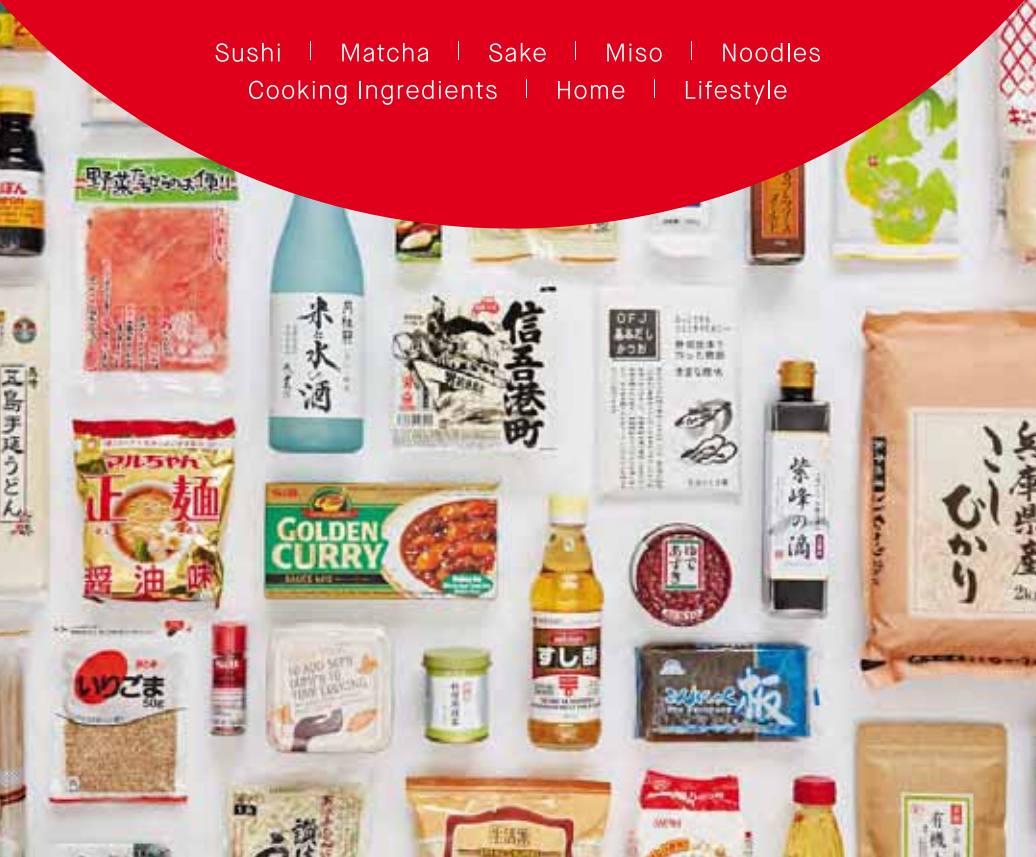
Coal Drops Yard, N1C 4AB.

T: 020-3869 8200. www.hicce.co.uk

JAPAN CENTRE

DISCOVER ALL THINGS JAPANESE IN LONDON

Sushi | Matcha | Sake | Miso | Noodles
Cooking Ingredients | Home | Lifestyle



- OUR LOCATIONS -

Japan Centre Panton Street

📍 1 min from Leicester Square
35b Panton Street
London SW1Y 4EA

Japan Centre Ichiba

📍 1 min from White City
Level -2 Westfield London
Shepherd's Bush W12 7HB

Japan Centre Stratford

📍 3 min from Stratford
Great Eastern Market
Westfield Stratford City E20 1GL

Shop online www.japancentre.com



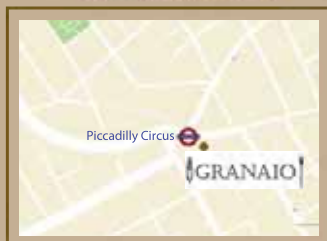
Traditional Italian food
in a relaxed atmosphere
in the heart of the West End



20% Off Food

Only valid Monday-Thursdays included

224 Piccadilly, Piccadilly Circus
London, W1J9HP
reservation a ristorantegranaio.co.uk
+44(0)2079301459



www.ristorantegranaio.co.uk
this offer is subject to availability

INFO To dial the UK, remove the first 0 and add 44. Map: refers to the grid coordinates on our Central London Map (p. 90). Prices shown are for a three-course meal. £: up to £20 per person. ££: £20-£40 per person. £££: £40 or more per person

AMERICAS

BUBBA GUMP SHRIMP CO

This fun restaurant serves seafood, ribs and American classics in a *Forrest Gump*-themed setting. Daily L & D. ££. 13 Coventry St, W1D 7AB. T: 020-3763 5288. www.bubbagumpshrimp.co.uk. Station: Piccadilly Circus. E7.

HAM HOLY BURGER

Dine on gourmet burgers in this department store eaterie. Daily L & D. £. John Lewis, 300 Oxford St, W1A 1EX. T: 020-7499 8296. www.hamholyyburger.co.uk. Station: Oxford Circus. B5.

HARD ROCK CAFE

London's original burger joint, with rock 'n' roll memorabilia. Daily L & D. ££. 150 Old Park Lane, W1K 1QZ. T: 020-7514 1700. www.hardrock.com. Station: Hyde Park Corner. E8.

OBLIX

Enjoy contemporary cuisine served high up in The Shard. Daily L & D. £££. 31 St Thomas St, SE1 9RY. T: 020-7268 6700. www.oblixrestaurant.com. Station: London Bridge. E10.

How do you take yours?

Tea lovers can celebrate this month's National Tea Day (21 Apr) at **FesTeaVal** at Tobacco Dock, Wapping (13-14 Apr). Part food festival, part lifestyle show, the UK's biggest tea festival features an ice beach, comedy, tea pairings and a Biscuiteers boutique. www.tobaccodocklondon.com



St
Martin
in
the
Fields

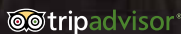
Café
in the Crypt

London's hidden café

Café in the Crypt

Breakfast • Lunch • Afternoon Tea • Pre-Theatre Dinner
Underneath St Martin-in-the-Fields, Trafalgar Square

www.smitf.org



SEA SHELL
WORLD FAMOUS ICONIC BRITISH
FISH AND CHIPS
SINCE 1956
WHEN IN LONDON
**EAT WHERE
LONDONERS EAT**
020 7224 9000 www.seashellrestaurant.co.uk



FOOD DRINK & FUN

Bubba Gump Shrimp Co



"My mama always said life was like a box of chocolates. You never know what you're gonna get."

Forrest Gump

**BURGERS, STEAKS,
RIBS, FRIED CHICKEN
SHRIMP, SEAFOOD, FISH &
CHIPS AND MANY MORE**

Web: www.bubbagumpshrimp.co.uk
E: info@bubbagumpshrimp.co.uk
Tel: 020 3763 5288
13 Coventry Street, London, W1D 7AB

*Offer not valid in conjunction with any other offer. Applies to food only and does not include drinks. Not valid on Saturdays after 5pm. Not valid for party sizes of more than 6. Subject to availability. Valid until 31 December 2019

Eating Out

PLANET HOLLYWOOD

A film-inspired dining experience. L & D (bar to 1am). ££. Daily L & D. 57-60 Haymarket, SW1Y 4QX. T: 020-7287 1000. www.planethollywoodlondon.com. Station: Piccadilly Circus. E7.

RAINFOREST CAFE

Dine in a 'jungle'. Daily L & D. ££. 20 Shaftesbury Ave, W1D 7EU. T: 020-7434 3111. www.therainforestcafe.co.uk. Station: Piccadilly Circus. E3.

BRITISH

AQUA SHARD

Great views from The Shard. Dishes include seared halibut and stuffed globe artichoke. Daily B, L & D. £££. 31 St Thomas St, SE1 9RY. T: 020-3011 1256. www.aquashard.co.uk. Station: London Bridge. E10.

CAFÉ IN THE CRYPT

Hearty dishes and hot desserts served in the church's 18th-century vaults. Mon-Sat B, L & D; Sun 11am-6pm. £. St Martin-in-the-Fields, corner of Trafalgar Square, WC2N 4JJ. T: 020-7766 1158. www.smitf.org. Station: Charing Cross. E8.

THE SEA SHELL

Decades-old seafood restaurant with an aquarium at the back. Mon-Sat L & D. ££. 49-51 Lisson Grove, NW1 6UH. T: 020-7224 9000. www.seashellrestaurant.co.uk. Station: Marylebone. C5.

SOPHIE'S STEAKHOUSE & BAR

Top-quality British steaks and homemade burgers, plus sharing platters. Daily L & D. ££. 42-44 Great Windmill St, W1D 7ND (and branch). T: 020-7836 8836. www.sophiessteakhouse.co.uk. Station: Piccadilly Circus. E7.

A taste of Turkey

Review

Yeni is a brand new venue in Soho, decorated like a 'meyhane' (a Turkish tavern) and serving traditional dishes including köfte (meatballs), ribs prepared on a Jospier grill, and aubergine and goat's yoghurt-stuffed manti (dumplings). Try its cocktails made with raki; isot peppers and mahaleb cherries. The decor is enhanced by turquoise-tiled tables, lanterns and glass chandeliers by Istanbul artists. 55 Beak St, W1F 9SH. T: 020-3475 1903 www.yeni.london

GASTROPUBS

BEAR & STAFF

Enjoy classic comfort food such as soup, pies or scampi. Daily B, L & D. £-££. 10-12 Bear St, WC2H 7AX. T: 020-7321 0814. www.nicholsonspubs.co.uk. Station: Leicester Square. E7.

THE PORCUPINE

This historic pub has a great pie menu. Mon-Sat B, L & D; Sun L & D. £-££. 48 Charing Cross Rd, WC2H OBS. T: 020-7379 9855. www.nicholsonspubs.co.uk. Station: Leicester Square. E7/E8.

WHITE HORSE

A pub with original signs, serving pies and steak. Mon-Sat B, L & D; Sun L & D. £-££. 16 Newburgh St, W1F 7RY. T: 020-7494 9748. www.nicholsonspubs.co.uk. Station: Oxford Circus. D7.

WHITE SWAN

This traditional pub serves sharing dishes and fish and chips. Mon-Sat B, L & D; Sun L & D. £-££. 14 New Row, WC2N 4LF. T: 020-3077 1129. www.nicholsonspubs.co.uk. Station: Leicester Square. E8.

INDIAN

AMAYA

Michelin-starred dishes are prepared in an open kitchen. Daily L & D. £££. Halkin Arcade, 19 Motcomb St, SW1X 8JT. T: 020-7823 1166. www.amaya.biz. Station: Knightsbridge. F6.



LONDON PLANNER

Rainforest Cafe

**DISCOVER LONDON'S
WILDEST FAMILY
DINING ADVENTURE!**

**JUST 2 MINUTES FROM
PICCADILLY CIRCUS**

15% DISCOUNT

OFF YOUR FINAL FOOD BILL*

SUBJECT TO AVAILABILITY

020 7434 3111

WWW.THERAINFORESTCAFE.CO.UK

* Offer valid seven days a week.
Maximum party size of 6. Please present this voucher to your Safari Guide when seated.
Cannot be used in conjunction with any other offer.

Eating Out

CHUTNEY MARY

Cuisine from seven Indian regions served in a charming setting. Daily L & D. ££. 73 St James's St, SW1A 1PH. T: 020-7629 6688. www.chutneymary.com. Station: Green Park. E7.

GAYLORD RESTAURANT

Award-winning dishes. Daily L & D. ££. 79-81 Mortimer St, W1W 7SJ. T: 020-7580 3615. www.gaylordlondon.com. Station: Oxford Circus. D7.

MASALA ZONE

Street food and thalis in a great setting. Daily L & D. ££. 48 Floral St, WC2E 9DA. T: 020-7379 0101 (and branches). www.masalazone.com. Station: Covent Garden. D6.

VEERASWAMY

Michelin-starred dishes. Daily L & D. £££. 99 Regent St, W1B 4RS. T: 020-7734 1401. www.veeraswamy.com. Station: Piccadilly Circus. E7.

ITALIAN GRANAIO

Family-friendly restaurant serving Italian classics in grand surroundings. Daily L & D. ££. 224 Piccadilly, W1J9HP. T: 020-7930 1459. www.ristorantegranaio.co.uk. Station: Piccadilly Circus. E7.

VERDI ITALIAN KITCHEN

Italian classics in the Royal Albert Hall. Tue-Sun L & D. ££. Kensington Gore, SW7 2AP. T: 020-7070 4401. www.royalalberthall.com/verdi. Station: South Kensington. F4.

JAPANESE

SAKAGURA

Izakaya-style Japanese 'pub'. Daily L & D. ££. 8 Heddon St, W1B 4BS. T: 020-3405 7230. www.sakaguralondon.com. Station: Piccadilly Circus. E7.

RIVERSIDE

BATEAUX LONDON

See London's sights on a cruise. Daily L & D. £££. Embankment Pier, WC2N 6NU. T: 020-7695 1800. www.bateauxlondon.com. Station: Embankment. E8.

LONDON SHOWBOAT

Dinner with entertainment. £££. Westminster Pier, SW1A 2JR. T: 020-7740 0400. www.citycruises.com. Station: Westminster. F8.

RS HISPANIOLA

Docked restaurant ship. Daily L & D. ££. Victoria Embankment, WC2N 5DJ. T: 020-7839 3011. www.hispaniola.co.uk. Station: Embankment. E8.

SPANISH

EL PIRATA

Tapas dishes and seafood. Mon-Fri L & D; Sat D. ££. 5-6 Down St, W1J 7AQ. T: 020-7491 3810. www.elpirata.co.uk. Station: Green Park. E6.

SOUTH EAST ASIAN

THAI POT

This popular spot offers authentic Thai dishes, including massaman curry. Mon-Sat L & D. £. 1 Bedfordbury, WC2N 4BP. T: 020-7379 4580. www.thaipot.biz. Station: Covent Garden. D8.



Hit the right note

The National Theatre's **House** restaurant has an afternoon tea themed around the showgirl musical *Follies*, which is being staged here. Start with a New York pretzel flavoured with beer mustard and a pastrami sandwich, followed by scones and sweets that include blackcurrant mousse, strawberry rose cheesecake and a white chocolate éclair inspired by the show's silver costumes. South Bank, SE1 9PX. T: 020-7452 3600. www.nationaltheatre.org.uk



AUTHENTIC THAI CUISINE

at the award winning

THAI POT

since 1992



Awarded:
*Authentic Thai Food –
Ministry of
Commerce, Thailand*

**4 stars –
Master Chef UK**



**Thai Select Award –
Department of Export
Promotion, Ministry of
Commerce, Thailand**

**1 Bedfordbury,
Covent Garden,
London WC2N 4BP
behind ENO, Coliseum,
⊕ Charing Cross Station
(Covent Garden exit)**

020 7379 4580

www.thaipot.biz

4 stars restaurant at 2 stars price!

– food and service others talk about –

ADVERTORIAL



EL PIRATA

For more than 20 years, El Pirata has hit the spot as London's top restaurant for traditional Spanish tapas. Located in the heart of Mayfair, it's the perfect place for a true taste of the Mediterranean. Informal, inexpensive and above all, authentic – the restaurant uses the finest Spanish produce, including jamón ibérico. Celebrity fans include Brian May and Johnny Depp, and food critics are unanimous in their praise of this 'Spanish gem'.

5-6 Down Street, Mayfair, W1 7AQ.

020 7491 3810/020 7409 1315.

www.elpirata.co.uk: Green Park. Map E6



PRESENT ADVERT TO SERVER BEFORE ORDERING

20% OFF

FOOD, SOFT DRINKS + MERCHANDISE*

RESTAURANT OPEN 'TIL MIDNIGHT (11PM SUN)
BAR OPEN 'TIL 1AM (MIDNIGHT SUN)



TO BOOK PLEASE CALL

020 7287 1000

planethollywoodlondon.com



57-60 HAYMARKET
LONDON SW1Y 4QX



TUBE: PICCADILLY CIRCUS OR LEICESTER SQ

Discount applicable to a la carte menu (excluding kids' meal deal) paying by cash or card only. Valid until 30/4/19. Not valid in conjunction with any other offer. Subject to availability. 1 voucher per table max. 8 persons. CODE: LPLAN

WATCH FOOTBALL SHOWN LIVE IN OUR BAR

SEE WEBSITE FOR MATCH
SCHEDULE. FULL DRINK AND
BAR BITES MENU AVAILABLE

Nightlife

Review

Just your cup of tea

The American actor Channing Tatum has a lot to answer for. Getting up to mischief – and by that, I mean his real-life antics as a stripper – inspired the 2012 *Magic Mike* film, in which he played the lead. But that's not all. More recently, that film has spawned ***Magic Mike Live* at The Hippodrome.**

Part cabaret, part strip and acrobatics show, you can watch men rip open their shirts to reveal oil-slicked six-packs, aerialists writhing about and street dancers in baseball caps (on backwards, naturally) do one-handed press-ups.

Great for hen dos, the show makes for a fun night out. Now you can make it even better, as the show's production designer, Rachel O'Toole, has a new bar: the Boozy Tea Room. Thanks to Tatum, you can expect topless waiters

behind the bar, which will leave you feeling hot under the collar.

The hunks serve up tea-infused cocktails (with a wink) along with snacks. The food is surprisingly vanilla, with cucumber sandwiches, crushed avocado on toast and quinoa and pine nut salad on offer, as well as more indulgent truffle mac and cheese, mini roast beef bagels and boozy caramelised meringues.

The drinks, however, will get you in the party mood. Sink into velvet banquettes or leather sofas to sip G & Tea – a blend of Earl Grey tea and gin; Alabama Sunset – Chinese pu'er tea mixed with tequila, rose petals and hibiscus flowers; or Floating Buffalo – black tea, bourbon and vanilla ice cream. Stripping and tea? Sounds like a night of striptease to me.

– Sarah Riches
Cranbourn St, WC2H 7JH. T: 020-7769 8888.
www.hippodromecasino.com



Magic Mike Live



Review



Designed with Instagram in mind'

Sarah Riches, Nightlife Editor

With spring in the air, where's better to visit than a garden? **Savage Garden** is a rooftop bar atop the DoubleTree by Hilton Hotel London - Tower of London. Floor-to-ceiling windows give you 360-degree views of the Tower of London and The Shard. Grab seats on one of its suntrap terraces. Everything's designed with Instagram in mind, from neon signs and injectable doughnuts, to squid sticks mounted on gold sprayed pineapple tops. 7 Pepys St, EC3N 4AF. T: 020-7709 1043. www.savagegarden.co.uk

TRADITIONAL PUBS

MAGPIE & STUMP

This cosy pub dates back to the 1500s. 18 Old Bailey, EC4M 7EP. T: 020-7248 5085. www.magpieandstump.com. Station: St Paul's. D10.

WAXY O'CONNOR'S

Huge Irish-themed pub. 14-16 Rupert St, W1D 6DD. T: 020-7287 0255. www.waxyconnors.co.uk. Station: Piccadilly Circus. E7.

YE OLDE CHESHIRE CHEESE

Expect snug 17th-century rooms and narrow passageways. 145 Fleet St, EC4A 2BU. T: 020-7353 6170. Station: Blackfriars. D9.

BARS & CLUBS

THE BACK ROOM

This cocktail bar, which is part of the Hard Rock Cafe, is packed with music memorabilia. 148b Old Park Lane, W1K 1QZ. T: 020-7514 1700. www.hardrock.com. Station: Green Park. E6.

INFO Most bars are open 11am-11pm, most nightclubs are open 10pm-3am. The UK's legal drinking age is 18 years old. ID may be required. Map: refers to the grid coordinates on our Central London map (p. 90)

CITY GARDEN BAR

This bar at the top of what is nicknamed the Walkie-Talkie building boasts spectacular city views and free entry. Sky Garden, 20 Fenchurch St, EC3M 8AF. T: 0333-772 0020. www.skygarden.london. Station: Monument. E11.

GONG

This smart, intimate lounge bar on the 52nd floor of The Shard has amazing Thames views and cocktails to match. 31 St Thomas St, SE1 9QU. T: 020-7234 8208. www.shangri-la.com. Station: London Bridge. E10.

GORDON'S WINE BAR

Enjoy a large selection of wines from around the world in this popular, brick-walled basement, established in 1890. 47 Villiers St, WC2N 6NE. T: 020-7930 1408. www.gordonswinebar.com. Station: Charing Cross. E8.

NIGHTJAR

This dimly-lit joint in east London is known for its brilliant cocktails and cool atmosphere. 129 City Rd, EC1V 1JB. T: 020-7253 4101. www.barnightjar.com. Station: Old Street. C10.

RILEYS SPORTS BAR

This sports bar serves steak, burgers and an all-day breakfast. There are 34 screens and table football, ping pong and darts. 380 Haymarket, SW1Y 4TE. T: 020-7930 0393. www.rileysportsbars.co.uk. Station: Piccadilly Circus. E7.

SEARCYS ST PANCRAS CHAMPAGNE BAR

Europe's longest Champagne bar, which is located in St Pancras Station. St Pancras International, Euston Rd, N1C 4QL. T: 020-7870 9900. www.searcyschampagnebars.co.uk. Station: King's Cross St Pancras. C8.

LIVE ENTERTAINMENT

RONNIE SCOTT'S

Renowned Soho jazz club established in 1959. Famous performers here include Count Basie and Miles Davis. Reservations essential for performances. 47 Frith St, W1D 4HT. T: 020-7439 0747. www.ronniescotts.co.uk. Station: Tottenham Court Road. D7.

MAGIC MIKE LIVE © TREVOR LEIGHTON; SAVAGE GARDEN COURTESY OF DOUBLETREE BY HILTON HOTEL LONDON - TOWER OF LONDON

I TRAVEL FOR
— THE —
STORIES

FIND YOUR

GREAT

BRITAIN



Old school

You don't need to be a student to fall in love with the beautiful university city of Oxford, says **Bethan Kapur**

Oxford is the oldest university in the UK – students have been walking the corridors since 1167. It is the famous training ground for British prime ministers – 27 out of 54 of the country's leaders studied here. The impressive alumni is too long to list, but a few former students include Oscar Wilde, Margaret Thatcher, former Pakistan prime minister Benazir Bhutto and Einstein.

A short train journey away, this historical city is ideal for a weekend trip. This month the city is in the spotlight with the Oxford Literary Festival (to 7 Apr), and the Oxford and Cambridge Boat Race on the River Thames in London (7 Apr).

SLEEP OVER

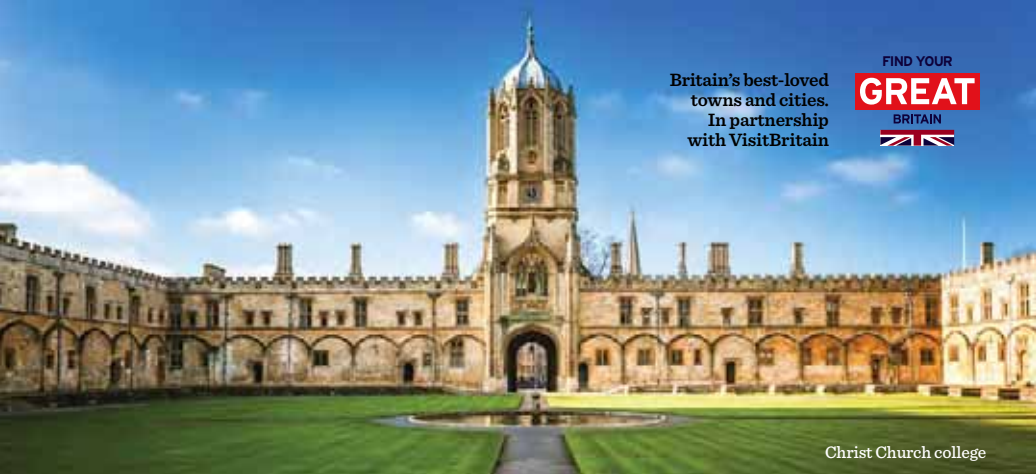
Student accommodation isn't glamorous but it can be picturesque if you're staying in a historic college surrounded by verdant lawns. The website University Rooms offers a choice of 12 colleges, each providing bed and breakfast or self-catering options.

If you wish, you can stay in a room overlooking the courtyard of Christ Church college. It is a haven for *Harry Potter* fanatics: this is home to the Grand Staircase from the films and it's where 13 of Britain's prime ministers studied.

The college is also the birthplace of *Alice in Wonderland*: the Cathedral Garden is where



Britain's best-loved
towns and cities.
In partnership
with VisitBritain



Christ Church college



Norrington Room in
Blackwell's bookshop



Oxford and Cambridge boat race

author Lewis Carroll worked and met Alice Liddell, the daughter of the dean and inspiration for his main character. The Alice tree also sits in the garden, so you can admire its winding branches and imagine the grinning Cheshire cat.

You might prefer the gothic architecture of Exeter College, particularly if you love *The Lord of the Rings*, as this is where JRR Tolkien stayed.

GET ON YOUR BIKE

In order to blend in, it's a good idea to cycle, as this is a popular mode of transport among students. The city has made it convenient for you, with dockless bikes dotted around the city. As the name suggests, these bikes don't have to be put back into docking stations. This means that, with the abandon of an irresponsible undergraduate, you can leave it wherever you like when you've finished.

An app will show you where nearby bikes are and help you to book one. You could also go on a cycle tour of the town: Bainton Bikes will guide you around the city in two hours. For something more unusual, try the Alice in Wonderland cycle tour, where you'll follow her story along the Thames Path and enjoy a break with a cream tea or picnic. ▶



Bridge of Sighs



Punting

BY THE BOOK

You don't need a coursework deadline to visit Bodleian Library. This student library is the second-biggest in the UK, after The British Library in London. It is also one of the oldest libraries in Europe. As well as every book that has ever been published, it has everything you could hope for in a place of study – wooden panels, high ceilings and wooden ladders on wheels.

Bookworms should also browse the Norrington Room in Blackwell's bookshop, which is the largest room dedicated to book sales in Europe.

PLAY HARD

No student would turn down the opportunity to have fun for free, so walk around the town and admire its architecture. Hitler thought it was so beautiful that he intended to use it as his capital if he conquered England.

Dubbed the 'City of Dreaming Spires' by Victorian poet Matthew Arnold, the architecture is mainly gothic. The oldest spire, which dates back to Anglo-Saxon times, is the Tower of St Michael at the North Gate. For a view from the highest point, climb the Carfax Tower; no other building is allowed to be built taller than this.

Every Oxford student will have tried punting at least once, so visit the Magdalen Bridge Boathouse to hire a boat. If you've never punted, you can hire a chauffeur and, if you're feeling fancy, a picnic hamper.

Bodleian Library



LOCATION MAP



The Hall in Christ Church



PRETTY PUBS

To complete your student experience, you need to go on a pub crawl. You could sample a real ale at the Lamb & Flag, where it is believed that Thomas Hardy wrote most of his novel *Jude the Obscure*, or visit The Eagle and Child. There, the Chancellor of the Exchequer lodged during the English Civil War and the literary group The Inklings (including JRR Tolkien and CS Lewis) would often meet.

Go down a secret alley to find Turf Tavern. Enjoy a pub lunch in the beer garden and eavesdrop on students discussing their latest essay topics.

If you fancy listening to live music, visit Sandy's Piano & Wine Bar. Enjoy performances every night and an open mic night on Sundays. www.visitoxford.org ■

I TRAVEL FOR ADVENTURE

*Gaze up high as hot air balloons
glide across the sky. Bristol Balloon
Festival, Bristol, England.*

#LoveGreatBritain

FIND YOUR

GREAT

BRITAIN



Essential information

Ticket information

Oyster cards & Travelcards

An Oyster card is a pre-paid travel smart card. Use it for single journeys on the bus, Tube, tram, DLR, London Overground and most National Rail train services within the London region. You can also buy a Visitor Oyster card before you leave home for £5 and load it with credit at www.visitorshop.tfl.gov.uk. The system has nine zones; Zone 1 is in central London.

Buy Oyster cards and Day Travelcards from ticket machines at stations, eight TfL Visitor Centres and any Oyster Ticket Shop.

UK residents can also pay for their travel with a UK-issued contactless payment debit card.

For more information, see www.tfl.gov.uk/visitinglondon.



An Oyster card also gives you a 25 per cent discount on Emirates Air Line (London's cable car) and discounts on single journeys on all MBNA Thames Clippers river buses. For more information, visit www.visitorshop.tfl.gov.uk.

Visitor pass

London Pass offers free entry and discounts at a fixed price. See www.visitbritainshop.com.

USEFUL THINGS TO KNOW

from booking a place to stay to getting around the city



For 24-hour travel info, visit Transport for London's (TfL) website www.tfl.gov.uk/visitinglondon or call T: 0343-222 1234.

London Underground (the Tube)

🚇 www.tfl.gov.uk See London Underground Map (p. 96-97).

Services run Mon-Sat 5am-12.30am and Sun 7.30am-11.30pm on most routes. Night Tube runs all night Fri & Sat on the Victoria and Jubilee lines, and most of the Central, Northern and Piccadilly lines. Fares vary; a Zone 1 adult fare £4.90 (£2.40 Oyster).

London buses

London buses run from 5am-12.30am. Night buses (midnight-4.30am) operate on main routes. Some services run 24 hours a day. You can't pay cash on the bus, so use an Oyster card, Travelcard or

UK-issued contactless payment debit card. For further information, visit www.tfl.gov.uk/buses. Single fare is £1.50 with an Oyster card or UK-registered contactless card. Unlimited bus journeys within one hour of touching in.

London Overground

🚆 www.tfl.gov.uk See London Underground Map (p. 96-97). Trains run Mon-Sat 5am-midnight and Sun 7am-11.30pm on most routes.

Docklands Light Railway

DLR www.tfl.gov.uk
T: 020-7363 9700. Trains run every three to 10 mins. Mon-Sat 5.30am-12.30am; Sun 7am-11pm.

Taxis

Fares increase after 8pm. Don't use vehicles that approach you, except for licensed black cabs. Visit www.tfl.gov.uk.

LONDON PLANNER  Now on YouTube

Subscribe

www.youtube.com/LondonPlanner



TRAINS

🚉🚉 **Paddington** serves the West Country, Wales and the South Midlands. 🚉🚉

Paddington serves the West Country, Wales and the South Midlands. 🚉🚉 **Liverpool Street** and 🚉🚉 **Fenchurch Street** serve East Anglia and Essex. 🚉🚉 **Euston** 🚉🚉 **King's Cross St Pancras** 🚉🚉 **Marylebone** and 🚉🚉 **St Pancras International** (connects to 🚉🚉 King's Cross St Pancras) serve north and central Britain, and southeast England. 🚉🚉 **Charing Cross** 🚉🚉 **London Bridge** 🚉🚉 **Waterloo** and 🚉🚉 **Victoria** serve southern England.

T: 0845-748 4950. www.nationalrail.co.uk.

Eurostar uses 🚉🚉 St Pancras International. Go to www.eurostar.com. UK: T: 0344-822 4777. International: T: 0343-2186 186.






Car hire

Make sure your driving licence is valid for the UK and see 'Congestion Charge' (p. 88). **Enterprise Rent-A-Car** T: 0800-800 227. www.enterprise.co.uk. **Hertz** T: 020-7365 3369. www.hertz.co.uk. **Kendall Cars Ltd** T: 020-8542 0403. www.kendallcars.com.

Santander Cycles hire

Bicycles are for hire from docking stations. £2 for 24-hour. First 30 min of cycling are free. www.tfl.gov.uk/santandercycles or T: 0343-222 6666.

Transport symbols explained

	London Underground		Docklands Light Railway
	London Overground		London River Services Pier
	National Rail		

INFO Map: refers to the grid coordinates on our Central London Map (p. 90). Prices quoted are for single journeys. Fares and journey times can change. Please check before you travel at www.tfl.gov.uk



Airports

Heathrow Airport

T: 0844-335 1801. www.heathrowairport.com. London Underground: Direct trains to/from central London every five minutes 5am-11.45pm via 🚉🚉 Piccadilly Line. Journey time 60 minutes. Heathrow Express: Four direct trains an hour to/from 🚉🚉 Paddington. Journey time 15 minutes. National Express: Three coaches per hour to/from Victoria Coach Station. Journey time 45 minutes.

Gatwick Airport

T: 0844-892 0322. www.gatwickairport.com. ThamesLink T: 0345-026 4700. Direct trains to/from 🚉🚉 London Bridge and 🚉🚉 St Pancras International (connects to 🚉🚉 King's Cross St Pancras), and others. Gatwick Express: Direct trains to/from 🚉🚉 Victoria every 15 minutes. The journey takes about 30 minutes. Southern Railway: Direct trains to/from 🚉🚉 Victoria every 15 minutes. The journey takes 30 minutes. National Express: Direct coaches to/from Victoria Coach Station, up to two coaches per hour. Journey times are one hour 20 minutes.

City Airport

T: 020-7646 0088. www.londoncityairport.com. 🚉🚉 **DLR** London City Airport: Trains to/from 🚉🚉 **DLR** Canary Wharf (change at 🚉🚉 **DLR** Poplar) 🚉🚉 **DLR** Canning Town 🚉🚉 **DLR** Bank and many other stations.

Stansted Airport

T: 0844-335 1803. www.stanstedairport.com. Stansted Express: Trains to/from 🚉🚉 Liverpool Street. National Express: Coaches run to/from Victoria Coach Station. Stansted Citylink runs coaches to Stansted Airport from 🚉🚉 Victoria and 🚉🚉 King's Cross St Pancras.

Luton Airport

T: 01582-405 100. www.london-luton.co.uk. ThamesLink T: 0345-026 4700. Direct trains from 🚉🚉 St Pancras International are 40-45 minutes (connects to 🚉🚉 King's Cross St Pancras) and others.



Enjoy London with a Visitor Oyster Card.

The easiest way to travel around.

For more information or to pre-purchase, go to visitorshop.tfl.gov.uk

MAYOR OF LONDON

Transport for London




Essential information

Visitor information centre

Find tourist information at the City of London Information Centre, St Paul's Churchyard, EC4M 8BX.

Whether you need directions, information about events or day trip suggestions, speak to the friendly, multilingual team at the only officially recognised tourist information centre in central London. At the centre you services include Oyster cards, hotel reservations, foreign exchange, VAT refunds, stamps, postcards and tickets to attractions, tours as well as theatre shows.

There are also Visitor Centres at  Holborn, Victoria, Euston, King's Cross St Pancras, Liverpool Street, Piccadilly Circus, Paddington, Gatwick Airport and Heathrow Airport Terminals 2 & 3.



LONDON PLANNER

For copies of *London Planner* call T: 020-7611 4669

Morris Visitor Publications, 2nd Floor, Samuel House, 6 St Alban's St, London, SW1Y 4SQ. T: 020-7242 5222. london.planner@morrisvisiteurope.com.

 LondonPlanner  LondonPlannerMag  LondonPlanner

 www.youtube.com/londonplanner

Group Editor: Kohinoor Sahota **Group Deputy Editor:** Sarah Riches
Associate & Digital Editor: Neil Simpson **Sub Editor:** Anna Frame
Contributor: Bethan Kapur, Emma Levine **Picture Researcher:** Tamsan Barratt **Group Art Director:** Tim Benton **Senior Designer:** Suzette Scoble
Designer: Ella-Louisa Roman **Content Director:** Chris Johnson **Production & Distribution Director:** Melanie Neecham **Senior Production Assistant & Retoucher:** Dave Weeks **Production Assistant:** David Pollard **Senior Account Manager:** Christiane Heyde **Sales Director:** Rob Way **Senior Sales Development Manager:** Charlotte Johnson **Last Sales Development Manager:** Kate Roach **Sales and Marketing Executive:** Sam Marzeil **Sales and Marketing Associate:** Miroslava Jarmrichova **Head of Digital and Audience Development:** Leigh-Alexander Austin
Operations Director: Bridget Bayford **Senior Marketing, Distribution & Production Co-ordinator:** Graham Randell **Office Co-ordinator:** Ewa Laskowska **Operations Assistant:** Vinetta Swan **Publishing Director:** Stewart Dymock **Managing Director:** Chris Manning **London & Partners:** T: 020-7234 5800. www.londonandpartners.com www.visitbritain.com
London Planner Volume 32, Issue 4. Printed in Great Britain.
Over 100,000 monthly copies distributed worldwide. Est. 1984.
© Morris Visitor Publications. No part may be reproduced without written permission from Morris Visitor Publications.

NOTE: The information contained in this publication has been published in good faith on the basis of information submitted to Morris Visitor Publications. MVP and VisitBritain cannot guarantee the accuracy of the information in this publication and accept no responsibility for any error or misrepresentation. All liability for loss, disappointment, negligence or other damages caused by reliance on the information contained in this publication, or in the event of bankruptcy, or liquidation or cessation of trade of any company, individual or firm is hereby excluded. Printed by Acorn Web Offset Ltd, ISO 14001 accredited. ISSN 0265 8437 LP/362/Apr19/1104.

MVP

Morris Visitor Publications

visit
greenwich
time after time




IN PARTNERSHIP WITH



The papers used for this magazine are produced from certified sustainable sources by mills with recognised environmental accreditation. Please recycle this magazine, or return it to your hotel.

Coaches

London's main coach services use Victoria Coach Station, a central hub that offers travel across the UK, SW1W 9TP. T: 0343-222 1234. www.tfl.gov.uk/coaches.  Victoria.

Congestion Charge

There is a congestion charge to drive into central London, Mon-Fri 7am-6pm. Pay in advance or on the day of travel (£11.50), or the day after (£14). UK: T: 0343-222 2222. www.cclondon.com.

River services

MBNA Thames Clippers River Bus serves 22 piers. Adult from £4.80; child £2.40. River Roamer on the day adult £19.80; child £9.90. River Roamer advance adult £17.80; child £8.90. Discounts on single journeys on all MBNA Thames Clippers river buses with an Oyster card/contactless. T: 020-7001 2200. www.thamesclippers.com. www.tfl.gov.uk/river.

Emirates Air Line cable car

London's only cable car runs car across the Thames between Greenwich Peninsula (The O2) and the Royal Docks (ExCeL). You can board from either the North Greenwich or Royal Victoria sides of the river (return flights are available). www.tfl.gov.uk/emiratesairline.



FOR MORE
ESSENTIAL
INFO VISIT

LONDONPLANNER.COM



Accessible London

Disabled travellers in London should visit www.tfl.gov.uk/accessibility or DisabledGo at www.disabledgo.com. For UK details, visit www.openbritain.net.

Travel information

For 24-hour London travel information (bus, Tube, river, rail, coach, cycle, tram, car, on foot, accessibility and assisted travel), visit www.tfl.gov.uk/gettingaround or call T: 0343-222 1234.



Accommodation

Choose luxury hotels, bed and breakfasts, self-catering apartments or hostels.

BOOKING

Book accommodation before you travel through www.visitlondon.com. Alternatively book through www.expedia.co.uk, which is its official hotel booking partner.

24-hour Tube: Fri & Sat

- Jubilee Line: Across the entire line.
- Victoria Line: Across the entire line.
- Northern Line: Between Morden and Camden Town and between Camden Town to High Barnet/Edgware.
- Piccadilly Line: Between Cockfosters and Heathrow Terminal 5.
- Central Line: Between White City and Leytonstone; between Ealing Broadway and White City; and between Leytonstone and Loughton/Hainault.

IMAGE © ISTOCK

DOWNLOAD THE LATEST ISSUE NOW!

at: visitlondon.com/londonplanner
or: visitbritain.com/en/londonplanner



or subscribe to receive printed copies by contacting: subscriptions@morriseurope.com



LondonPlannerMag



@LondonPlanner

© iStockphoto/Peter Jermola

I TRAVEL FOR CULTURE

Head to Sky Garden, where stunning views across the capital blossom. Fenchurch Street, London, England.

#LoveGreatBritain

FIND YOUR GREAT BRITAIN

KEY

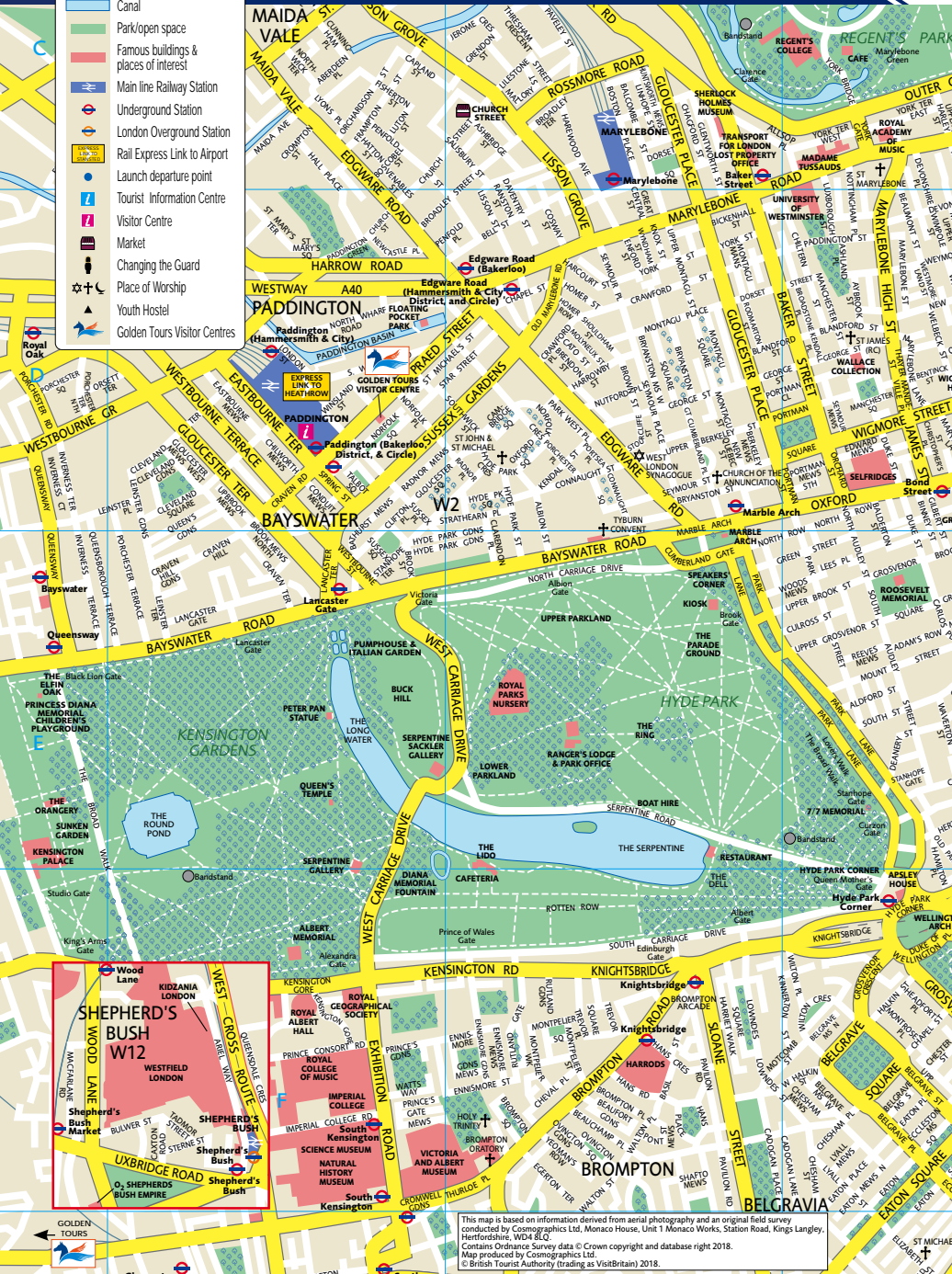
-  Major Road
-  Minor Road
-  Railway
-  Docklands Light Railway
-  Canal
-  Park/open space
-  Famous buildings & places of interest
-  Main line Railway Station
-  Underground Station
-  London Overground Station
-  Rail Express Link to Airport
-  Launch departure point
-  Tourist Information Centre
-  Visitor Centre
-  Market
-  Changing the Guard
-  Place of Worship
-  Youth Hostel
-  Golden Tours Visitor Centres



GoldenTours
Experience London and the UK



SI
EV



This map is based on information derived from aerial photography and an original field survey conducted by Cosmographics Ltd, Monaco House, Unit 1 Monaco Works, Station Road, Kings Langley, Hertfordshire, WD4 8LQ.
Contains Ordnance Survey data © Crown copyright and database right 2018.
Map produced by Cosmographics Ltd.
© British Tourist Authority (trading as VisitBritain) 2018.

LIGHTSEEING EVERYWHERE

www.goldentours.com

Central London





GoldenTours
Experience London and the UK



SIGHTSEEING EVERYWHERE

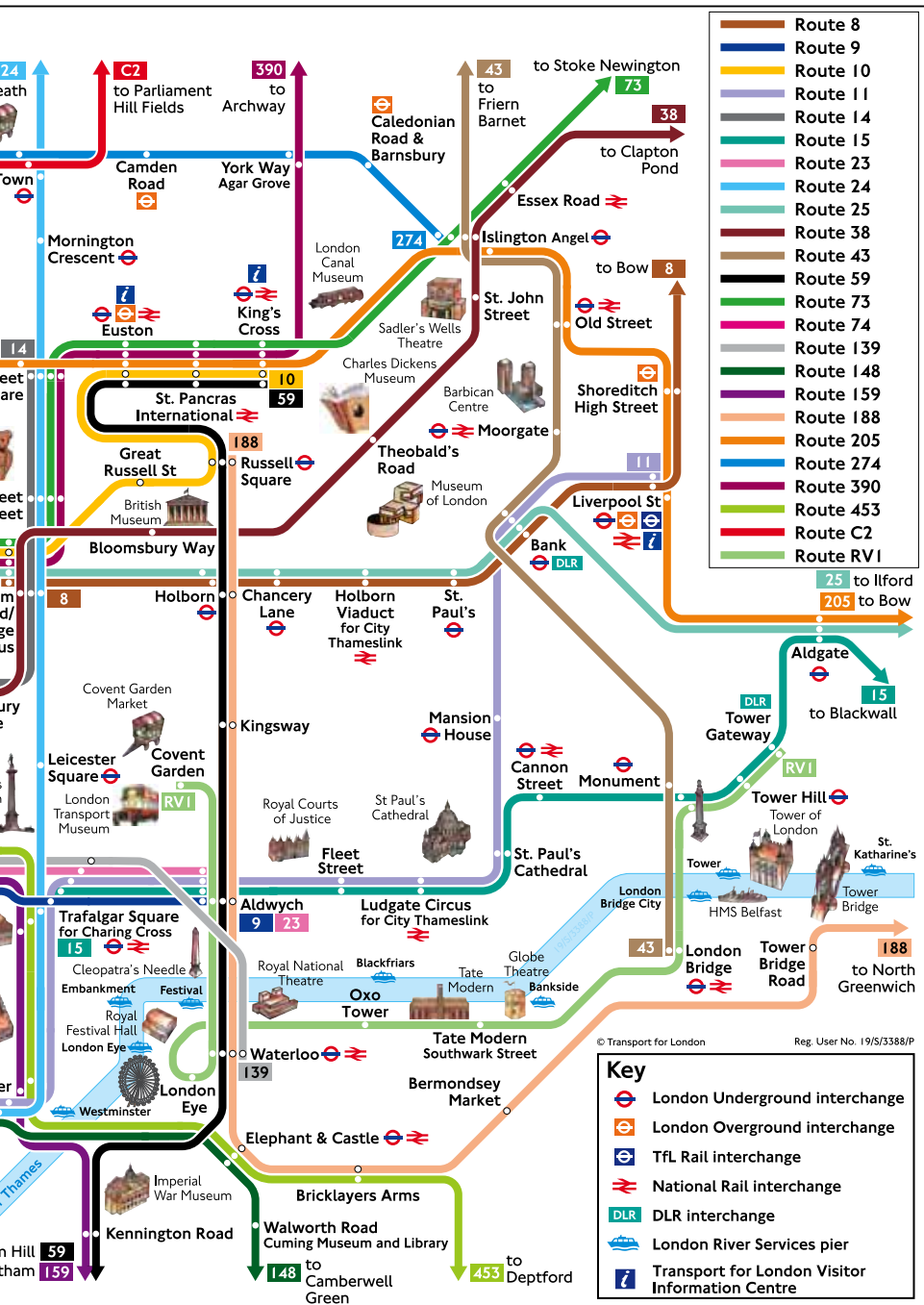
goldentours.com



London bus map

Key bus routes in central London





London Underground map



MAYOR OF LONDON

tfl.gov.uk

24 hour travel information
0343 222 1234*

Sign up for email updates
tfl.gov.uk/e

*Service and network charges may apply. See tfl.gov.uk/terms for details.

© Transport for London

Reg. user No. 19/S/3388/P

Version D 12.2018

LONDON PLAN

THINGS TO DO | FOOD AND DRINK | TRAVEL ESSENTIALS | FIRST



† Services or access at these stations are subject to variation. To check before you travel, visit tfl.gov.uk/plan-a-journey
 ‡ Kensington (Olympia) open weekends and on some public holidays

Northern Line Piccadilly Line Victoria Line Waterloo & City Line DLR Emirates Air Line cable car Overground TfL Rail

Updates
 Email updates

@TfLTravelAlerts



TRANSPORT FOR LONDON
 EVERY JOURNEY MATTERS

Improvement works may affect your journey, please check before you travel Correct at time of going to print

TRAVELER.COM *Your friend in the city*

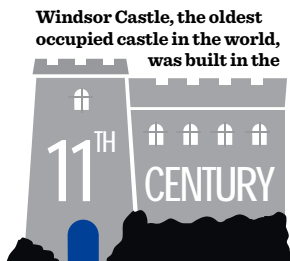
VISIT | ITINERARIES | ASK THE EXPERT | TICKETS AND OFFERS

LONDON IN NUMBERS

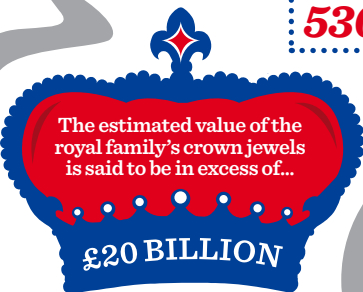
Royal London



THE QUEEN'S GUARD has guarded the official royal residences in the United Kingdom since...



*Mounted at the top of the Sovereign's sceptre is the largest flawless cut diamond in the world - it weighs **530 CARATS***



THERE ARE OVER 100 COACHES & CARRIAGES IN THE ROYAL COLLECTION



The Queen has seen **12** Prime Ministers during her reign - from Sir Winston Churchill through to Theresa May



19 STATE ROOMS
188 STAFF BEDROOMS
52 ROYAL & GUEST BEDROOMS
92 OFFICES & 78 BATHROOMS

Sources: www.royal.gov.uk;
www.mirror.co.uk; www.hrp.org.uk;
www.telegraph.co.uk;
www.independent.co.uk

THE STATE ROOMS BUCKINGHAM PALACE



Enjoy an Exclusive Evening Tour of the magnificent State Rooms at Buckingham Palace

Available on selected dates 29 March – 28 April 2019
Pre-booking is highly recommended

EXPERIENCE LONDON'S
LANDMARK MUSICAL EVENT

Disney
THE
LION
KING

Discover more at thelionking.co.uk

LYCEUM THEATRE  Covent Garden