

SIGHTS • ARTS • SHOPPING • EATING • ENTERTAINMENT • MAPS

LONDON

THE FREE OFFICIAL MONTHLY GUIDE • NOVEMBER 2018

PLANNER

Light up your trip

From fireworks to light shows,
how to make your visit sparkle

PLUS

- Lord Mayor's Show
- World Vegan Month
- EFG Jazz Festival

WAR AND PEACE

100 years since the
end of World War I

FANTASTIC FEASTS

Shoreditch's Michelin
meals and best brunches

VISITLONDON.COM





'IT IS OUT OF THIS WORLD,
IT'S MAGIC, AND IT'S A HIT'

THE TIMES



HARRY POTTER

AND THE
CURSED CHILD

— PARTS ONE AND TWO —

BASED ON AN ORIGINAL NEW STORY BY
J.K. ROWLING, JACK THORNE & JOHN TIFFANY
A NEW PLAY BY **JACK THORNE**

CHECK DAILY FOR LATE-RELEASE TICKETS
PALACE THEATRE, LONDON

www.HarryPotterThePlay.com

TM & © HPTP. Harry Potter - WBEI

THE MAYOR'S LETTER

Welcome to London this November

This is an exciting time in the capital as it gears up for festive celebrations. The city's best-loved Christmas markets open, Hyde Park Winter Wonderland returns, and Regent Street and Oxford Street will sparkle with Christmas lights.

November marks the 100th anniversary of the end of World War I, and the Museum of London has a free one-day festival. *London at War* explores what life was like in the capital, from the women who worked in factories to accounts of a Zeppelin raid. For a theatrical take on the conflict, *War Horse* is on at the National Theatre.

The National Portrait Gallery, meanwhile, has a stellar new show on Thomas Gainsborough: the exhibition about one of Britain's best artists includes works that have never been on display in the UK.

I'd recommend a trip to Wembley Stadium, too, as England's men's football team will be facing the US and Croatia. Sports fans can also catch the world's greatest tennis players at the Nitto ATP Finals, at The O2. However you spend your time, have a brilliant stay!



Sadiq Khan
Mayor of London



Twitter: @LondonPlanner
Facebook: LondonPlannerMag
Instagram: LondonPlanner



VisitBritain®



VISITLONDON.COM

OFFICIAL VISITOR GUIDE

**‘THE ULTIMATE
FEEL-GOOD SHOW!’**
CLASSIC FM

BENNY ANDERSSON & BJÖRN ULVÆUS’
**MAMMA
MIA!**
THE SMASH HIT MUSICAL BASED ON
THE SONGS OF ABBA®

mamma-mia.com
NOVELLO THEATRE
ALDWYCH | WC2B 4LD | COVENT GARDEN



ROYAL
OBSERVATORY
GREENWICH

rmg.co.uk

Save online
with the Day Explorer Ticket

Don't be a tourist Be an explorer

Take a leap through time and space on the world-famous Meridian Line at the Royal Observatory, Greenwich.

Part of Royal Museums Greenwich

Royal Observatory | National Maritime Museum | The Queen's House | Cutty Sark

📍 Cutty Sark (Zone 2) 🚶 Greenwich Pier

🚶 Greenwich (Zone 2) Only 8 minutes from London Bridge

INSIDE THIS ISSUE

November 2018

CONTENTS

- 03 Mayor's welcome**
Sadiq Khan welcomes you to London
- 06 Top 10 free attractions**
The most popular places to visit
- 08 War and peace**
Find out how the capital is marking 100 years since the end of World War I
- 14 Light up your trip**
From fireworks to Christmas lights, add some sparkle to your visit
- 20 Discover**
A guide to east London's restaurants
- 88 Beyond London**
Enjoy Bonfire Night across the country
- 106 London in numbers**
Statistics on why London is the greatest city in the world

WHAT'S ON

- 22 Sightseeing**
- 52 Museums & Galleries**
- 60 Entertainment**
- 72 Sport**
- 74 Shopping**
- 78 Eating Out**
- 86 Nightlife**
- 94 Essential Information**

MAPS

- 70 Theatreland**
- 98 Central London**
- 101 River services**
- 102 London buses**
- 104 London Underground**



DOWNLOAD THE LATEST ISSUE NOW!

at: www.visitlondon.com/londonplanner
or: www.visitbritain.com/londonplanner
Read a digital copy: www.en.calameo.com

or subscribe to receive a printed copy every month
by contacting: subscriptions@morrisseurope.com

FREE ATTRACTIONS

London's most popular free attractions compiled according to the latest visitor numbers.
www.visitlondon.com. Source: ALVA



TOP 10



- 1 The British Museum**
Famous museum housing treasures including the Rosetta Stone and the Elgin marbles
- 2 Tate Modern**
Former power station in Bankside containing an international modern art collection



- 3 The National Gallery**
Priceless artefacts spanning more than 3,000 years, with works by Botticelli, da Vinci and van Gogh
- 4 Natural History Museum**
Displays of the natural world, including prehistoric fossils, dinosaurs and taxidermy
- 5 Victoria and Albert Museum**
Incredible artefacts spanning more than 3,000 years, including art, sculpture and fashion



- 6 Science Museum**
Interactive scientific fun for kids and grown-ups, boasting everything from rockets to steam engines
- 7 Southbank Centre**
Major arts centre housing the refurbished Hayward Gallery, hosting music, dance and art events



- 8 Somerset House**
This neoclassical gem beside the river is home to contemporary arts and cultural events
- 9 Royal Museums Greenwich**
Maritime history and world-class art at this immense UNESCO World Heritage Site



NATURAL HISTORY MUSEUM COURTESY OF NATURAL HISTORY MUSEUM; VICTORIA AND ALBERT MUSEUM © VICTORIA AND ALBERT MUSEUM; THE NEW TATE MODERN © HAYES DAVIDSON & HERZOG & DIMEURON; ALL OTHER IMAGES © ISTOCK



EMIRATES STADIUM TOUR

GET CLOSER TO THE HOME OF ARSENAL

AUDIO TOURS IN 9 LANGUAGES



arsenal.com/tours

Cover-More
TRAVEL INSURANCE

**VISIT
RWANDA**

A low-angle, upward-looking shot of a biplane, likely a Sopwith Camel, displayed in a large museum hall. The aircraft is dark green with several Royal Air Force roundels (blue outer rings, white middle rings, and red centers) on its wings and fuselage. The background shows the complex steel truss structure of the museum's roof and other parts of the aircraft. The lighting is dramatic, with some bright spots and deep shadows.

THE GREAT AND THE GOOD

The 11th month, on the 11th day, at the 11th hour: the moment when World War I ended is impossible to forget. But did you know that 2018 marks 100 years since the announcement? **Neil Simpson** discovers stories about the Great War



Left: Royal Air Force Museum This image: female munitions workers



**Above: Poster featuring a Zeppelin over London
Left: The Lusitania camisole**

GRENADES ON CLAPHAM COMMON

London remains one of the world's greenest cities, so it's perhaps not surprising to hear that its vast parks were put to good use by the army. Wimbledon Common was an encampment, as Roy Stephenson, historic environment lead at the Museum of London, explains: 'It was like a whole city of wooden buildings, holding battalions of troops before they were put on trains to the Western Front, or receiving them back again.'

Meanwhile, a corner of Clapham Common became a trench warfare training ground. On the land closest to Clapham North Tube station, a network of trenches was dug – and it must have been pretty noisy: 'In the middle of urban London, they were testing hand grenades,' Stephenson says. 'You could go to Clapham Common, be shown how to operate a hand grenade, throw a few and then get a certificate for attending. That doesn't go on now – it's all done on Salisbury Plain, out of sight and out of mind.' Inmates at the infamous Wormwood Scrubs Prison manufactured the grenades, which were sent to Clapham Common in hand carts.

WOMEN ON THE MARCH

It is no coincidence that 2018 also marks 100 years since the first women won the right to vote in the UK. As the suffragettes battled the Houses of Parliament, World War I saw women replace enlisted men in public transport, engineering and munitions manufacturing roles.

'That's one of our strong stories at the Museum of London,' reveals Stephenson. 'A predecessor at the London Museum [open from 1912 until 1976] actively collected women's workwear from that period. So, we've got an amazing collection of the uniforms and the kit they would have used.'

These days, you'll find this remarkable uniform stash in the Museum of London's People's City gallery. To see it brought to life, visit the museum on Saturday 10 November, when you'll meet an actress playing a wartime munitions factory worker, walking around the museum as part of its *London at War* family day.

THE LUSITANIA CAMISOLE

On 7 May 1915, the unarmed passenger ship *Lusitania* was attacked by a German submarine near the south of Ireland. Nearly 2,000 passengers were on board, including Margaret Gwyer and her husband. As the ship sank, the couple were sucked into its funnels. When the *Lusitania*'s boiler room exploded, they were blown back out again and, miraculously, became two of the few survivors. London's Imperial War Museum displays the camisole that Margaret wore that night.

'It's in remarkably good condition,' says the museum's World War I curator Richard Hughes. 'It's just a bit frayed and covered in black marks.' Margaret's family donated it to the Imperial War Museum and, for Hughes, it's a highlight ►

of the collection: 'Obviously we've got lots of weapons and barbed wire, but I always think of the camisole as particularly personal.'

ZEPPELIN STRIKES

Before the horror of the Blitz during World War II, London experienced the threat of Germany's menacing Zeppelin airships. Stephenson describes them as 'huge, cigar-shaped balloons of lighter-than-air, explosive hydrogen, with a little gondola and an engine underneath'. The Zeppelins were steered by the wind, which meant that they could emerge anywhere in the skies over or near London. The fact that they flew at very high altitudes made them difficult to stop, but several were shot down in areas beyond the city such as Stevenage in Hertfordshire.

Eventually, however, Zeppelins began striking London. Stephenson says: 'If you walk down Tooting High Street you can see the damaged pediment of a building which we know is from a Zeppelin attack.' In September 1915, one pilot dropped bombs from Golders Green towards central London, over Bloomsbury, Holborn and Clerkenwell, as well as the City of London's Guildhall area and Liverpool Street Station. 'Just off Barts Square, there's a warehouse building where you can see that the upper storeys were rebuilt after that attack,' Stephenson says. At 57a Farringdon Road, you'll find a plaque on the building that commemorates the attack.



The Tomb of the Unknown Warrior

ARMISTICE DAY

The Imperial War Museum has recorded many stories about the end of the war. One of Hughes' favourites is Caroline Rennles. 'Born in Camberwell, she was a munitions worker during the war,' he says. 'Her father died during the global influenza pandemic, two days before the armistice.'

She was with her father's coffin at home and didn't even know that the armistice had been signed, until she heard the sirens and went out into the street. 'Hughes curated the museum's installation, *I Was There: Room of Voices*. 'Each clip, running as a sequence, focuses on what people did immediately after the war was over.'

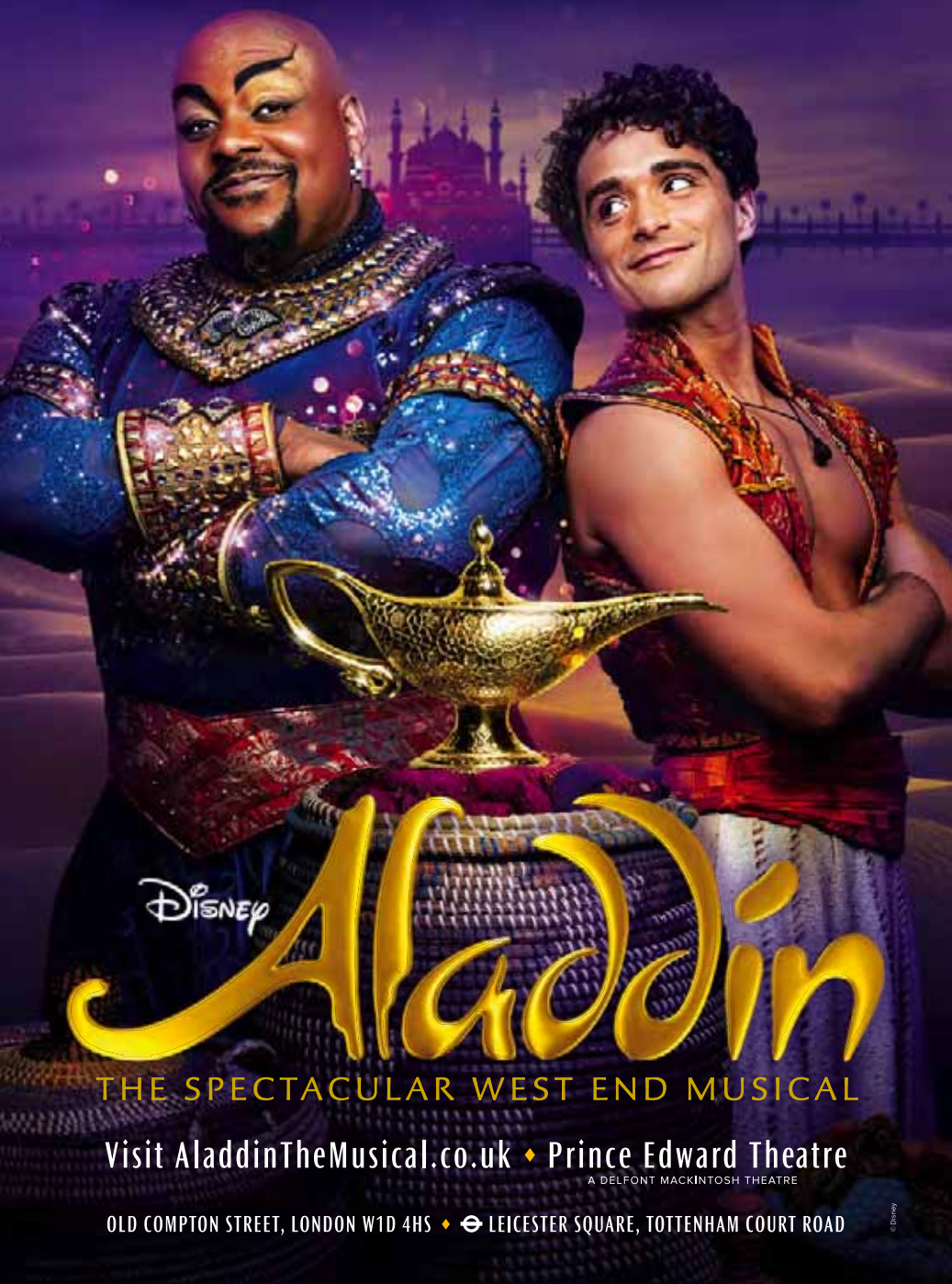
THE TOMB OF THE UNKNOWN WARRIOR

As London recovered, people's thoughts turned to commemorating those who died. The Cenotaph on Whitehall is the UK's national memorial. As the stone Cenotaph, designed by Sir Edwin Lutyens, was unveiled in 1920, Westminster Abbey buried the body of a soldier – this unidentified soldier had been found on the battlefields of France. Now known as the Tomb of the Unknown Warrior, the grave contains French soil and is covered with Belgian marble, which reads '*thus are commemorated the many multitudes who during the Great War of 1914-1918 gave the most that man can give*'. As is tradition, the Duchess of Cambridge placed her bouquet here after marrying Prince William in 2011. ▶

Crowd cheering on Armistice Day



MAGIC AWAITS



Disney

Aladdin

THE SPECTACULAR WEST END MUSICAL

Visit AladdinTheMusical.co.uk ♦ Prince Edward Theatre

A DELFONT MACKINTOSH THEATRE

OLD COMPTON STREET, LONDON W1D 4HS ♦  LEICESTER SQUARE, TOTTENHAM COURT ROAD

LONDON REMEMBERS

Find out how to join in as the country marks World War I

THE PEOPLE'S PROCESSION

In July, the UK government launched a ballot inviting members of the public to join this march down Whitehall. Watch as 10,000 people take part in 'A Nation's Thank You' by walking past the Cenotaph to pay tribute to those lost. www.armistice100.org.uk

CHURCH BELLS

The government has also joined forces with the German government to encourage churches around the world to ring their bells, in a recreation of the spontaneous bell-ringing which took place as the armistice was signed in 1918 – even iconic Big Ben took part. www.gov.uk

SILENCE IN THE SQUARE

Head to Trafalgar Square for this annual event, where a programme of presentations will take place on the big stage beside Nelson's Column. www.london.gov.uk

LONDON AT WAR, MUSEUM OF LONDON

The day before, on Saturday 10 November, head to this free, museum-wide event during which four actors will tell the stories of wartime Londoners. www.museumoflondon.org.uk

MAKING A NEW WORLD, IMPERIAL WAR MUSEUM

This exhibition at IWM London and IWM North explores how World War I shaped society. At 11am on Remembrance Sunday, IWM London's Western Front bugle will play the Last Post, followed by a violin recital. www.iwm.org.uk

ALFRED MUNNINGS: WAR ARTIST, NATIONAL ARMY MUSEUM

An exhibition of Munnings' World War I paintings: the artist was renowned for his depictions of horses (from 30 Nov). The Centenary Remembrance Late event (7 Nov) marks the armistice with poetry and music. www.nam.ac.uk

FIRST WORLD WAR IN THE AIR, ROYAL AIR FORCE MUSEUM

Thanks to a big redevelopment, this north London museum has been given a new lease of life, and now has more galleries. Its *First World War in the Air* exhibition brings together aircraft, medals and uniforms. www.rafmuseum.org.uk

JUTLAND 1916, NATIONAL MARITIME MUSEUM

At this free exhibition, discover the story and technology behind what is infamously known as the largest surface sea battle in history, the Battle of Jutland. www.rmg.co.uk

SPANISH FLU, FLORENCE NIGHTINGALE MUSEUM

Spanish flu arrived just as World War I was ending and it was the deadliest pandemic in history. This exhibition recreates a 1918 field hospital to show how nurses tried to fight it. www.florence-nightingale.co.uk ■



Alfred Munnings' *Halt on the March by a Stream at Nesle*

Florence Nightingale Museum



ALFRED MUNNINGS' HALT ON THE MARCH BY A STREAM AT NESLE © BEAVERBROOK COLLECTION OF WAR ART, CANADIAN WAR MUSEUM; FLORENCE NIGHTINGALE MUSEUM © THOMAS GILDER



PRESENTS



LONDON'S MAGICAL CHRISTMAS LIGHTS TOUR

Join our panoramic tour of London's most beautifully illuminated landmarks this Christmas season. On board we will give you a blanket to borrow and a **Santa hat** to keep, plus a **FREE glass of mulled wine** at Planet Hollywood.

www.theoriginaltour.com - **020 8877 2131**

TOURS RUN 17TH NOVEMBER - 29TH DECEMBER

Let there be light

It may be getting darker, but London in winter is a wonderland full of activities to brighten up your stay, says **James Drury**

Get cosy in your warmest clothes and enjoy an explosive night of fun at one of London's traditional firework displays. Explore walking trails through light-art installations at some of the city's great attractions, or see the famous Christmas lights as you shop. Add in traditional warming drinks, roasted chestnuts plus other festive food, and it makes this a magical time of the year to visit.

FIREWORK DISPLAYS

Every 5 November, bonfires are lit across the UK and fireworks are let off. This is to mark the anniversary of a failed attempt by Catholic rebels to kill King James I in 1605, by blowing up the Houses of Parliament with gunpowder.

There are spectacular displays, so put your hat and scarf on and start your trip off with a bang.

At the top of a hill with great views across the London skyline, **Alexandra Palace's** huge 'festival of fireworks' (2-3 Nov) features more entertainment than you can shake a sparkler at, including a laser show, German Bier Festival, street food stalls, DJs and circus performers.

There's also a huge bonfire and an amazing show by an award-winning pyrotechnic company at **Battersea Park** (3 Nov), not far from the area's iconic former power station.

Blackheath fireworks (3 Nov), meanwhile, is one of London's biggest free displays, attracting more than 80,000 people to enjoy tasty food and hot drinks along with the swoosh of the rockets.

LONDON LIGHTS



Kew Gardens



Alexandra Palace



Carnaby Street

You get two displays for the price of one at **Brockwell Park** in Lambeth (3 Nov). The first display at 6.45pm is choreographed to kids' movie themes such as *Moana*, *Trolls* and *Frozen*; the second (8pm) takes you through the time tunnel to boogie with the bangers including music from the 80s to today, such as Whitney Houston, Oasis and Beyoncé. There are musical displays, too, at **Morden Park** (3 Nov) and **Wimbledon Park** (5 Nov).

Listen to pop with the bang of the fireworks at **Harrow** fireworks display (3 Nov) in Byron Park, where you'll see a display accompanied by pop music, including a section dedicated to the Indian festival Diwali. There's also street food from around the world, fire jugglers, face painting and henna hand art. ▶

LONDON LIGHTS



Regent Street

CHRISTMAS LIGHTS

Give your visit some extra sparkle with a trip to London's famous Christmas lights. This tradition started on **Regent Street** in 1954 when shops and businesses decided to host a display to show that post-war London was an attractive place to visit, and they have been cheering up winter evenings ever since. To add a touch of glamour, the biggest displays are officially switched on by celebrities, including the Spice Girls (1996), actress Helen Mirren (1998) and singer Rita Ora (2017).

This year, there are more than 300,000 lights hanging in Regent Street, which will put a twinkle in your eye as you shop on one of London's most famous shopping streets, which dates back to 1825.

The Christmas lights on **Oxford Street** are being given a total makeover this year. Although the final design is a secret, organisers are promising a display to rival New York and Sydney. The big switch-on is usually

carried out by a celebrity, with thousands of people turning out to watch.

It's not just fantasy over at Carnaby Street, where lyrics from Queen's *Bohemian Rhapsody* are illuminated across the swinging 60s fashion street, while the display at **Covent Garden** gives this historic market a Christmassy feel. Last year they were switched on by Kylie Minogue – who should be so lucky this year?

St Katharine Docks near the Tower of London is a pretty marina with shops and boats, plus a Christmas lights display and huge tree – perfect for those Instagram moments. Alternatively, browse the chic boutiques and restaurants of Chelsea's Duke

of York Square while lights glitter overhead.

The lights on the **South Bank** make for one of the most romantic winter walks in London, as you stroll along the River Thames, breathing in the smell of roasting chestnuts with a traditional warming mulled wine or hot chocolate in hand. ▶



Carnaby Street



WARNER BROS.
STUDIO TOUR
LONDON

THE MAKING OF Harry Potter



HOGWARTS IN THE SNOW

17TH NOVEMBER 2018 TO 27TH JANUARY 2019

TM & © 2018 Warner Bros. Entertainment Inc. All Rights Reserved.



TICKETS MUST BE PURCHASED IN ADVANCE AT
WBSTUDIOTOUR.CO.UK

LONDON LIGHTS



Royal Botanic
Gardens, Kew



ZSL London Zoo

LIGHT TRAILS

The winter's long nights are brightened up by after-dark illuminated trails. These stunning displays see the grounds of some of London's stately homes and attractions filled with sculptures and art installations made from lights. Discovering spectacular scenes as you walk the trail is a great way to brighten up a family evening out.

Go through the archway at **Kew Gardens** (22 Nov-5 Jan) and you'll find a field of lights, spreading towards the Great Pagoda before you reach the lake, where 300 illuminated origami boats are floating. Among the many displays are illuminated trees, and a tunnel of lights 100m long and 7m high. The best is saved for last, as the Palm House comes to life with a display of lasers and jumping light beams.

When the animals have all been tucked up in bed, **ZSL London Zoo** (22 Nov-1 Jan) has a 1km trail featuring huge lit-up animal sculptures, a canopy of 100,000 lights, singing trees and glowing fountains. There are also vintage fairground rides and a Father Christmas for children to meet.

An Enchanted Woodland awaits visitors at **Syon Park**, where an illuminated trail (9-25 Nov) winds through the 600-year-old gardens around the ornamental lake. ■

Royal Botanic
Gardens, Kew





ICON
OUTLET

— FEEL LIKE AN —
ICON

Outlet shopping is now live at The O2
Open 10am until late



iconattheo2.co.uk | [#iconattheo2](https://twitter.com/iconattheo2)



Radio Alice



Andina



Brick Lane
in Shoreditch



The Breakfast Club



The Clove Club



Radio Alice



The Breakfast Club



The Blues Kitchen



The Blues Kitchen

Hoxton & Shoreditch

N1
& E1

The Mayor of London's #SeeMoreLondon campaign encourages you to visit local neighbourhoods. Head to ultra-cool Hoxton and Shoreditch to discover some of London's most exciting foodie experiences

Once home to a thriving 17th-century textile industry, Victorian theatres and old-time music halls, these east London neighbourhoods boast some of the best restaurants in the city.

Whether uber-trendy, Michelin-starred establishments, street food bites or cuisines spanning the globe, you'll find it all here as you mingle with London locals at their favourite hangouts.

What's more, the area boasts two restaurants that are featured in The World's 50 Best Restaurants 2018 list. You don't even need to work up an appetite by getting here: the areas are within easy walking distance of the City of London, and are accessible via the Tube, London Overground and the rail network from stations such as Old Street, Liverpool Street and Shoreditch High Street. So, you'll have plenty of time to enjoy a pre-dinner drink at one of the area's many speakeasy cocktail bars, before checking out one of the top restaurants nearby.

1 **Worldwide flavours**

Get a taste of Peru at Andina, an innovative restaurant a few steps from Shoreditch High Street. Round up your group and order a whole suckling pig – don't forget to give five days' notice. Or plump for its reasonably priced street food, grilled meat and fish or the signature ceviche.

2 **Splashing out**

Spoil yourself in the achingly cool, Michelin-starred restaurant The Clove Club, which is the highest-placed UK spot on The World's 50 Best Restaurants 2018 list. Indulge in some of the best British cooking around with tasting menus created by head chef Isaac McHale.

3 **Italian treats**

Tuck into freshly baked, authentic Italian sourdough pizza at Radio Alice. Inspired by a recipe from Bologna, this hot spot serves up classic recipes such as mozzarella, tomato and basil, alongside original creations including aubergine or courgettes.

4 **Carnivores**

For American-themed comfort food, head to Smokestack. Its 4.5-tonne Texan smoker gives the restaurant's grilled meats, fish and veggies an authentic taste. For a true Deep South experience, try the crispy ox cheek starter and follow with the signature brisket.

5 **Cocktails**

Why just go for a meal when you can indulge in some cocktails first? For a lively night out, pair cocktails with Texan, Creole and Cajun food and enjoy a background of live blues, R&B and soul

at The Blues Kitchen. Here you will find real American soul food: jambalaya, gumbo, wings, ribs and fried chicken. Be prepared for a hit of southern-style flavours.

6 **Brunch**

There's no need to rush out of bed to go to The Breakfast Club in Hoxton. Classics such as pancakes, a full English fry-up and smashed avocado are served until noon, giving you plenty of time to lie in. If you'd rather wait for lunch or dinner, opt for fried chicken, loaded waffles and burgers.



SIGHTSEEING

SNOW IS FALLING



Sorry, we can't guarantee real snow in Hyde Park, but thanks to the return of **Winter Wonderland** (from 22 Nov) there'll be a thorough covering of fake snow, twinkling lights and festive cheer. Expect stalls, fairground rides and shows, plus an ice rink and Santa's grotto. It opens at 4pm on 22 Nov, then entry is from 10am-10pm every day. www.hydeparkwinterwonderland.com

AUTOPHILES ASSEMBLE

Love cars? Love shopping? Then head to the **Regent Street Motor Show** (3 Nov), which celebrates motoring through the ages. Admire veteran, vintage, classic and contemporary cars and watch low-emission motoring displays. The whole of the West End's Regent Street will be closed to (moving) cars – a real treat for shoppers. www.regentstreetmotorshow.com

A RIGHT ROYAL NOISE



Happy birthday, Prince Charles! To mark his birthday (14 Nov), the heir to the British throne is treated to **gun salutes** at noon. In Green Park, 41 guns will be fired, while 62 guns are going to be fired at the Tower of London. There will also be a two-gun salute on Horse Guards Parade on Remembrance Day (11 Nov), one at 11am and another at 11.02am. www.royal.uk/gun-salutes



POWER PROCESSION

Did you know that London has two mayors? As with many things in this city, it's down to how certain events played out hundreds of years ago – and it's a great excuse for a party!

The Lord Mayor's Show (10 Nov) is an annual, free spectacle centred on the Lord Mayor of the City of London, a role which is now 803 years old. His job is to be a champion for the country's financial and professional services, and the head of the City of London Corporation.

So, why two mayors? London has 32 boroughs, which are headed up by the Mayor of London, currently Sadiq Khan. The City of London is not one of these boroughs and therefore has its own head, the Lord Mayor. The Mayor must travel from the City to

Westminster once a year, to swear loyalty to the Crown.

This dramatic journey begins at Mansion House at 11am, after a two-minute silence for Remembrance Day. At 1pm, the procession returns via Victoria Embankment and finishes at 2.30pm.

Last year, more than 7,000 people took part in this procession, which stars the State Coach. This ornate, red-and-gold creation was built in 1757. Pulled by six horses, expect the coach to be joined by marching bands, vehicles and more horses.

At 3pm, you can join a free walk around the area – gather at Number 1 Poultry, opposite Mansion House (p. 44).

Don't miss one of London's most fascinating occasions. – Neil Simpson
www.lordmayorsshow.london

a

PIRATE'S

LIFE FOR

ME



V&A

V&A Museum of Childhood

20 October 2018 – 22 April 2019

Admission free

#MakeMeAPirate

vam.ac.uk/moc

SIGHTSEEING

APSLEY HOUSE

Visit the home of the Duke of Wellington, which stands alone on Hyde Park Corner, to see its grand interiors and fine art. Sat–Sun 10am–4pm. Adult £10; child £6. 149 Piccadilly, Hyde Park Corner, W1J 7NT. T: 020-7499 5676. www.english-heritage.org.uk. Station: Hyde Park Corner. F6.

BANQUETING HOUSE

This 17th-century building was designed by Inigo Jones for James I, with an exquisite painted ceiling by Baroque artist Peter Paul Rubens. Daily 10am–5pm, but call before visiting. Adult £6.50; child free. Whitehall, SW1A 2ER. T: 020-3166 6000. www.hrp.org.uk. Station: Westminster. E8.

THE BRITISH LIBRARY

The world's largest library has a wonderful permanent collection and temporary exhibitions. **NEW From 27 Nov:** PG Wodehouse: *The Man and His Work*. Display tracing the British author's creative development. Check for times. Admission free; charges for tours, some exhibitions and events. 96 Euston Rd, NW1 2DB. T: 0330-333 1144. www.bl.uk. Station: King's Cross. C7.

BUCKINGHAM PALACE

The London residence and principal workplace of the monarchy has 775 rooms. It is closed to the public, except in summer. Check for Changing the Guard times. *The Mall*, SW1A 1AA. T: 0303-123 7300. www.royalcollection.org.uk/buckingham-palace. Station: Victoria/Green Park. F6/F7.

CHANGING THE GUARD

Watch the changing of the Queen's Guard on the Palace's forecourt (except in very wet weather). From 10am; check for dates. Free to attend. *Buckingham Palace, The Mall*, SW1A 1AA. T: 030-3123 7300. www.householddivision.org.uk. Station: Victoria/Green Park. F6/F7.

CHELSEA PHYSIC GARDEN

London's oldest botanic garden. **24-25 Nov:** *Christmas Fair*. Adult £6; child free. Sun–Fri 11am–4pm or dusk (if earlier); closed 19–23 Nov. Adult £9.50; child £6.25. 66 Royal Hospital Rd, SW3 4HS. T: 020-7352 5646. www.chelseaphysicgarden.co.uk. Station: Sloane Square. Off map.

CUTTY SARK

FAMILY Climb on board the world's last surviving tea clipper and hear stories of life on board. Daily 10am–5pm. Adult £13.50; child £7. Joint tickets with Royal Observatory available. Book online to save. *King William Walk, SE10 9HT*. T: 020-8312 6608. www.rmg.co.uk. Station: Cutty Sark/Greenwich. Map inset.

DENNIS SEEVERS' HOUSE

Ten rooms, from the cellar to the attic, illustrate the life of a family of Huguenot silk weavers. **NEW From 25 Nov:** *Christmas Installation*. The house turns into a festive wonderland in this atmospheric event. Check for Silent Night and Daytime tours. Tickets £5–£15. 18 Folgate St, E1 6BX. T: 020-7247 4013. www.dennissevershouse.co.uk. Station: Liverpool Street. D11.

SETTING THE SCENES

Harry Potter fans will feel all festive on a visit to **Hogwarts in the Snow** (from 17 Nov; p. 38) at **Warner Bros. Studio Tour London**. Each year, part of the Great Hall set is dressed for the Yule Ball, while the studio's superb Hogwarts model is coated with a dusting of snow. Even the Gryffindor common room set is decorated for Christmas. At this behind-the-scenes glimpse at the world of making movies, you can also see the various types of snow that were used by the production crew – no gloves necessary.



PHOTOGRAPHY CENTRE

A HISTORY OF PHOTOGRAPHY
FROM DAGUERRETYPE
TO DIGITAL



V&A South Kensington

New galleries now open
vam.ac.uk

Admission free

The Photography Centre is supported by The Bern Schwartz Family Foundation,
Modern Media, Shao Zhong Art Foundation and many other generous donors.

Linda McCartney (1941–98) *Jimi Hendrix*. Bromide print, 1968, printed later.
Given by Sir Paul McCartney © 1968 Paul McCartney / Photographer: Linda McCartney

V&A

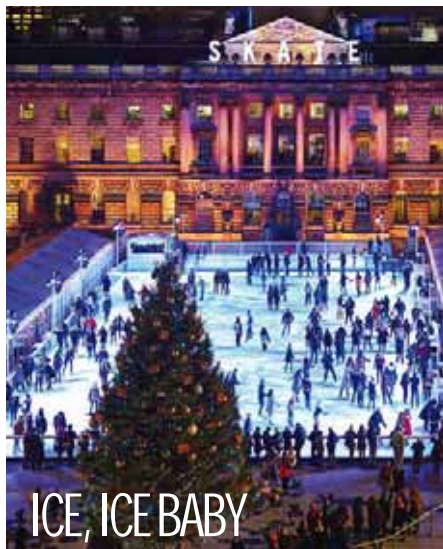
SIGHTSEEING

DR JOHNSON'S HOUSE

Writer Dr Samuel Johnson compiled his English dictionary, published in 1755, in this 18th-century house. Mon-Sat 11am-5pm; closed bank hols. Adult £7; child £3.50. *17 Gough Square, EC4A 3DE*. T: 020-7353 3745. www.drjohnsonshouse.org. Station: Temple/Chancery Lane. D9.

ELTHAM PALACE & GARDENS

Part showpiece of Art Deco design and part medieval royal palace, here you can experience the decade of decadence as you are transported back to the 1930s. Sun 10am-4pm. Adult £15; child £9. *Court Yard, SE9 5QE*. T: 020-8294 2548. www.english-heritage.org.uk/eltham. Station: Eltham. Off map.



ICE, ICE BABY

To get into the festive spirit, head to **Skate at Somerset House** (from 14 Nov; p. 58), which sees the neoclassical courtyard transformed into an ice-covered playground, complete with twinkling lights and a contemporary soundtrack. The event is sponsored by Piccadilly department store Fortnum & Mason, which takes care of the catering. This year, you'll find Fortnum's Lodge, which is dedicated to Alpine culture and cuisine. If you're just here to point and laugh, then get cosy in the Skate Lounge next to the rink and enjoy a cocktail or two. Every autumn, London sprouts more ice rinks than you can shake a turkey leg at, but Skate at Somerset House is one of the classiest. www.somersethouse.org.uk

FULHAM PALACE

This 15th-century building was the summer retreat of the Bishops of London; now it's a museum with a café. Its current exhibition explores the palace's role as a Red Cross hospital during World War I. Museum, historic rooms and shop Mon-Thur 12.30pm-3.30pm; Sun & bank hols noon-4pm. Admission free, charges for special events. *Bishop's Ave, SW6 6EA*. T: 020-7736 3233. www.fulhampalace.org. Station: Putney Bridge. Off map.

GO APE ALEXANDRA PALACE

FAMILY A treetop obstacle course for kids at this grand palace atop a hill, which has beautiful views of London. Daily; check for times and prices. *Alexandra Palace, Alexandra Palace Way, N22 7AY*. T: 0330-057 2329. www.goape.co.uk. Station: Alexandra Palace. Off map.

GO APE BATTERSEA PARK

FAMILY Treetop adventure playground, which is suitable for children over six and adults. Open daily; check for times and prices. *Battersea Park, SW11 4NJ*. T: 0330-057 2329. www.goape.co.uk. Station: Battersea Park. Off map.

HAM HOUSE AND GARDENS

One of Europe's greatest 17th-century houses, with gardens that are said to be haunted. Free architecture and garden history tours most days. General admission Mon-Fri 1pm-4pm, Sat-Sun noon-4pm; garden daily 10am-4pm. Adult £11.05; child £5.50. *Ham St, Surrey, TW10 7RS*. T: 020-8940 1950. www.nationaltrust.org.uk. Station: Richmond. Off map.

HANDEL & HENDRIX IN LONDON

The former homes of the Anglo-German composer George Frideric Handel and American guitarist Jimi Hendrix. **6 Nov:** *Handel and the Mandolin*. Music arranged by Handel especially for this instrument, performed by the London Mandolin Quartet; 6.30pm, £12. Mon-Sat 11am-6pm. Please check for full event details, times and prices. Adult £10; child £5. *25 Brook St, W1K 4HB*. T: 020-7495 1685. www.handelhendrix.org. Station: Bond Street. D6.

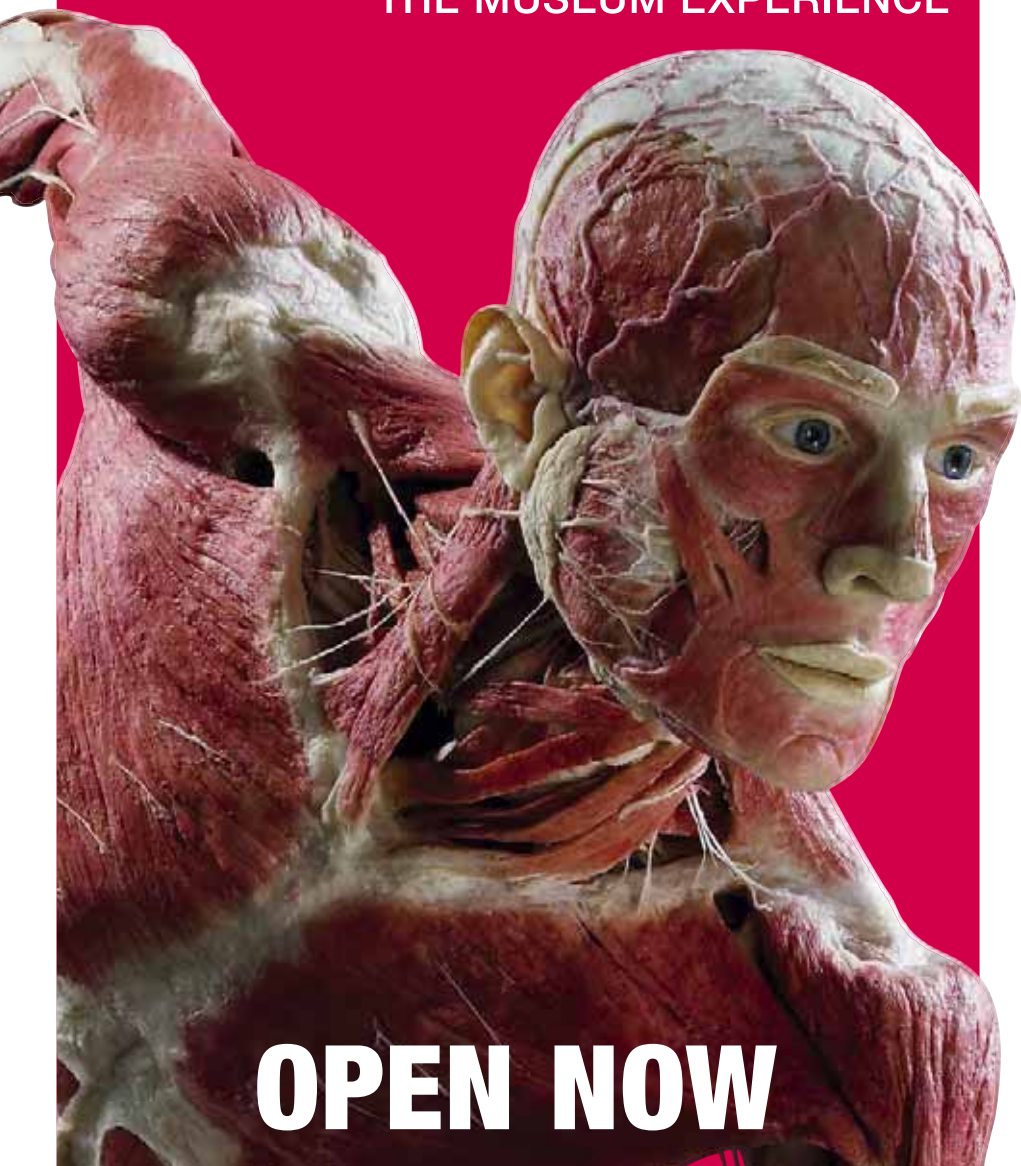
HMS BELFAST

FAMILY Permanently moored on the River Thames, this ship is Europe's only surviving World War II cruiser. Daily 10am-6pm. Adult £15.45; child £7.70. *The Queen's Walk, off Tooley St, SE1 2JH*. T: 020-7940 6300. www.twm.org.uk. Station: London Bridge. E11.

Gunther von Hagens' Original

BODY WORLDS

THE MUSEUM EXPERIENCE



OPEN NOW

A UNIQUE JOURNEY UNDER YOUR SKIN

 **PICCADILLY CIRCUS | BODYWORLDS.CO.UK**

SIGHTSEEING

HOUSES OF PARLIAMENT

See the stunning art and architecture inside this working parliament building, which is also a royal palace. Tours every Sat. Advance: audio tour adult £18.50, child £7.50 (one child free per paying adult); guided tour adult £25.50, child £11; family guided tour adult £18.50, child free. On the day: audio tour adult £20.50, child £8.50 (one child free per paying adult); guided tour adult £28, child £12. *Palace of Westminster, Parliament Square, SW1A 0AA. T: 020-7219 4114. www.parliament.uk/visit. Station: Westminster. F8.*

THE JEWEL TOWER

Built around 1365, this is one of only two buildings left from the medieval Palace of Westminster. Sat-Sun 10am-4pm. Adult £5.40; child £3.20. *Abingdon St, SW1P 3JX. T: 020-7222 2219. www.english-heritage.org.uk. Station: Westminster. F8.*

KEATS HOUSE

This 19th-century home belonged to the Romantic poet John Keats. Wed-Sun & bank hols 11am-5pm; 30-min guided tour at 3pm. Adult £6.50; child free. *Keats Grove, NW3 2RR. T: 020-7332 3868. www.cityoflondon.gov.uk. Station: Hampstead. Off map.*

KENSINGTON PALACE

This royal residence was Princess Diana's last home. Daily 10am-4pm. Adult £23; child £11.50. *Kensington Gardens, W8 4PX. T: 0844-482 7777. www.hrp.org.uk. Station: High Street Kensington/Queensway. Off map.*

KIDZANIA LONDON

FAMILY Parents take a back seat here as children try out different 'careers'. There are animation studios, a chocolate factory and an aviation academy, as well as a tattoo parlour. Wed-Fri 10am-4pm; Sat-Sun 10am-7pm; closed 5-7, 12-13, 19-20 & 26-27 Nov. Advance adult from £15; child from £18. On the day adult from £18; child from £38. *Westfield London Shopping Centre, Ariel Way, W12 7GA. T: 0330-131 3333. www.kidzania.co.uk. Station: Shepherd's Bush. Map inset.*

LONDON BRIDGE EXPERIENCE & TOMBS

Scary attraction about the history of London Bridge. Tickets include admission to the London Tombs, which are in a former plague pit. Check for times and prices. 2-4 Tooley St, SE1 2SY. T: 020-7403 6333. www.thelondonbridgeexperience.com. Station: London Bridge. E10.

SAVE £££s ON ATTRACTIONS WITH THE LONDON PASS®

- Free entry into over 70 attractions
- Fast track entry at busiest attractions
- Free guidebook
- Adult prices from £69
- Pass available for 1, 2, 3 & 6 days



£5.00 OFF MULTIDAY PASSES

Multiday London Passes (2, 3 and 6 day only)

To redeem this offer present this voucher at a GOLDEN TOURS visitor centre at one of the below locations:

Leicester Sq - 11a Charing Cross Road, London WC2H 0EP
(inside the ticket information booth opposite Garrick theatre)

Victoria - 4 Fountain Square, 123-151 Buckingham Palace Road, London SW1W 9SH (in Colonnade walk)

Kensington - 156 Cromwell Road, London SW7 4EF (near Gloucester Road tube station)

Or book online at www.londonpass.com and enter the code LONPLAN01

£5.00 DISCOUNT

TERMS: Offer only valid online or at Golden Tours locations. Present the voucher or code at the time of purchase. Offer valid until 25/10/20 for a maximum of 6 people per transaction.



AN INDOOR CITY RUN BY KIDS



**AMAZING
REAL LIFE
ACTIVITIES**



**BOOK NOW AT
KIDZANIA.CO.UK**

KidZania
London

Located in Westfield London, Shepherd's Bush

SIGHTSEEING

THE LONDON DUNGEON

This thrilling attraction will whisk you back to the capital's most perilous past. See, hear, feel and (ahem) smell the 'bad old days' as they come to life before you thanks to costumed characters. Not for small children or the faint-hearted! Joint tickets available with SEA LIFE London Aquarium, Coca-Cola London Eye, Madame Tussauds and Shrek's Adventure! Please check for times and prices. *County Hall, Westminster Bridge Rd, SE1 7PB. T: 020-7654 0809. www.the-dungeons.com. Station: Waterloo/Embankment. F8.*

COCA-COLA LONDON EYE

This London icon is one of the world's largest observation wheels – don't forget to share your London Eye memories using #eyelovendon. Joint tickets available with the SEA LIFE London Aquarium, London Dungeon, Madame Tussauds and Shrek's Adventure! Please check for times and prices. *County Hall, Westminster Bridge Rd, SE1 7PB. T: 0871-781 3000. www.londoneye.com. Station: Waterloo. F8.*

ZSL LONDON ZOO

Immerse yourself in the animal kingdom at the world's oldest scientific zoo, which has more than 750 species. Highlights include a penguin beach, Asiatic lions in the Land of the Lions enclosure and endangered Sumatran tigers.

NEW From 22 Nov: *Christmas at ZSL London.* Follow a mile-long illuminated path which lights up the zoo after dark (p. 18). Daily 10am-4pm.

Adult £27.04; child £20. *Regent's Park, NW1 4RY. T: 020-7722 3333. www.zsl.org. Station: Camden Town. C6.*

MADAME TUSSAUDS

The celebrated home of life-sized wax figures depicting famous people from entertainment, politics, sport and history. Don't miss the *Star Wars* exhibition, plus the chance to stand with the royal family on Buckingham Palace's balcony. Joint tickets available with SEA LIFE London Aquarium, London Dungeon, Coca-Cola London Eye and Shrek's Adventure! Check for times. Adult £35; child £30. *Marylebone Rd, NW1 5LR. T: 0871-894 3000. www.madametussauds.com/london. Station: Baker Street. C6.*



Houses of Parliament

More than just Big Ben



Tours available year round

Book online or call us on +44 20 7219 4114

parliament.uk/visit

Westminster Abbey



So many secrets waiting to be revealed

View The Queen's Window,
designed by David Hockney

The Queen's Diamond Jubilee Galleries,
hidden for 700 years, now open

Become a member for unlimited free admission

Book online today for fast track discounted entry

westminster-abbey.org

SIGHTSEEING

THE MONUMENT

This stone column standing in the heart of the City was built in 1677 to commemorate the 1666 Great Fire of London. Climb the 311 steps to its observation gallery. Daily 9.30am-5pm. Adult £5; child £2.50. Joint tickets with the Tower Bridge Exhibition available. *Monument St, EC3R 6BD. T: 020-7626 2717. www.themonument.org.uk. Station: Monument. E10.*

THE O2

Huge venue for entertainment and exhibitions. Don't miss the Oxygen Freejumping trampoline park, which has opened beneath The O2's domed roof. Daily 11am-8pm. Check for prices. *Peninsula Square, SE10 0DX. T: 020-8463 2000. www.theo2.co.uk. Station: North Greenwich. Off map.*

OLD ROYAL NAVAL COLLEGE

This Baroque masterpiece, part of the Maritime Greenwich World Heritage Site, is the home of British naval training, with costumed characters and tours. There's a museum about Greenwich, too. Daily 10am-5pm. Admission free. *King William Walk, SE10 9NN. T: 020-8269 4799. www.ornc.org. Station: Cutty Sark/Greenwich. Map inset.*

QUEEN ELIZABETH OLYMPIC PARK

FAMILY Formerly the site of the London 2012 Olympic and Paralympic Games, this park includes an aquatics centre and the ArcelorMittal Orbit observation tower. **8-18 Nov:** *Shrouds of the Somme*. This huge installation commemorates the centenary of the end of World War I, by placing 72,396 miniature human figures upon a green space in the park, to represent the men lost during the Battle of the Somme. Park open 24 hours daily. Admission free. *Queen Elizabeth Olympic Park, E20 2ST. T: 0800-072 2110. www.queenelizabetholympicpark.co.uk. Station: Stratford. Off map.*

ROYAL BOTANIC GARDENS, KEW

Better known as Kew Gardens, this botanical research centre contains plants from across the globe. Don't miss the Temperate House, which is the biggest Victorian glasshouse in the world. **NEW From 22 Nov:** *Christmas at Kew*. Lights festival; from 5pm; booking advised (p. 14). To 20 Nov daily 10am-4pm; from 21 Nov daily 10am-3.30pm. Adult £17; child £5; charges for some exhibitions. *Kew, Richmond, Surrey, TW9 3AB. T: 020-8332 5655. www.kew.org. Station: Kew Gardens. Off map.*

St
Martin
in
the
Fields

The best of London all under one spire

Upstairs explore beautiful architecture,
church services or a candlelit concert.

Downstairs enjoy some brass rubbing,
shopping and the Café in the Crypt.



St Martin-in-the-Fields
Trafalgar Square
+44 (0)20 7766 1100
www.smitf.org



**Three domes.
Five floors.
And Europe's
greatest crypt.**
See an *other*
side of St Paul's.



Climb one dome for the best 360° views in London. Step beneath another to experience the unforgettable. Enrich your visit with an acclaimed multimedia guide, available in nine languages.



www.stpauls.co.uk

 **St PAUL'S**
CATHEDRAL

SIGHTSEEING

THE ROYAL MEWS

This month is the last opportunity to visit this part of Buckingham Palace, before its annual two-month closure. The Mews houses the Queen's vehicles and horses, and visitors can witness daily working life here. Kids will enjoy learning how to harness a horse, as well as taking part in a busy programme of art sessions. To 3 Nov daily 10am-5pm; from 4 Nov Mon-Sat 10am-4pm. Adult £11; child £6.40; under-fives free. *Buckingham Palace Rd, SW1W 1QH. T: 0303-123 7302. www.royalcollection.org.uk/royal-mews. Station: Victoria. F6.*

THE ROYAL OBSERVATORY

Stand astride the historic Prime Meridian, where east meets west, to take your place at the centre of the world! Uncover the history of Greenwich Mean Time (GMT) and see clocks and timepieces that have completely changed how we live. Daily 10am-5pm. Adult £15; child £6.50. Joint tickets with Cutty Sark available. Book online to save. Audio guide tour available. *Blackheath Ave, SE10 8XJ. T: 020-8858 4422. www.rmg.co.uk. Station: Greenwich/Maze Hill/Cutty Sark. Map inset.*

SEA LIFE LONDON

FAMILY One of Europe's largest aquariums with 500 species of global marine life and walk-through tank tunnels, including a glass walkway above a school of sharks. You can also snorkel with sharks (£130 including admission), while the Rainforest Adventure attraction houses snapping turtles and the world's largest species of spider. Check for times and prices. Joint tickets available with Coca-Cola London Eye, London Dungeon, Madame Tussauds and Shrek's Adventure! *County Hall, Westminster Bridge Rd, SE1 7PB. T: 0333-321 2001. www.sealife.co.uk/london. Station: Westminster/Waterloo. F8.*

SHREK'S ADVENTURE!

FAMILY Ride the 4D 'DreamWorks Tours' bus to step into live actor fairy-tale-themed shows where you can meet the characters from the films. Joint tickets with the Coca-Cola London Eye, London Dungeon, Madame Tussauds and SEA LIFE London Aquarium available. Please check for times. Adult £27.50; child £22. *Riverside Building, County Hall, Westminster Bridge Rd, SE1 7PB. T: 0871-221 2837. www.shreksadventure.com. Station: Waterloo. F8.*

SEE IT.
HEAR IT.
FEEL IT.



at the Chelsea FC Stadium Tours & Museum.

Get closer than ever before with exclusive content, 360 films and much more.

Visit chelseafc.com/tours for more information.

TOURS AVAILABLE IN 12 LANGUAGES



THE ROYAL MEWS
BUCKINGHAM PALACE



BE TRANSPORTED THROUGH ROYAL HISTORY

Discover the horse-drawn coaches and carriages of Buckingham Palace at
THE ROYAL MEWS

ST KATHARINE DOCKS

This central London marina dates back to the 11th century and is tucked away by the Tower of London. A vibrant waterside destination, it's lined with markets, shops, art galleries and restaurants. *50 St Katharine's Way, E1W 1LA. T: 020-7264 5287. www.skdocs.co.uk. Station: Tower Hill. Off map.*

ST MARTIN-IN-THE-FIELDS

Landmark Palladian church with tours, live classical music, a brass-rubbing centre and art exhibitions. Holy Communion given daily and classical music performed weekly by candlelight. Mon-Fri 8.30am-6pm; Sat-Sun 9am-6pm. Admission free; brass rubbing from £4.50. *Trafalgar Square, WC2N 4JJ. T: 020-7766 1100. www.stmartin-in-the-fields.org. Station: Charing Cross. E8.*

ST PAUL'S CATHEDRAL

Sir Christopher Wren's 300-year-old cathedral has stunning mosaics. Climb up the dome to the Whispering Gallery and a further 271 steps to the Golden Gallery for a classic London panorama. Then head down to the crypt, with

its monuments to Wren and Lord Nelson. The price of admission also includes a multimedia guide and tours, subject to availability. Mon-Sat 8.30am-4.30pm. Adult £18; child £8. *St Paul's Churchyard, EC4M 8AD. T: 020-7246 8350. www.stpauls.co.uk. Station: St Paul's. D9/10.*

18 STAFFORD TERRACE

This house gives an insight into the personal lives of *Punch* cartoonist Edward Linley Sambourne and his family, who lived here from 1875. Open Wed, Sat & Sun; pre-booked tours 11am, drop-in 2pm-5.30pm, or late tour from 7pm on selected Wednesday evenings; check website for dates. Adult from £7; child from £5. *18 Stafford Terrace, W8 7BH. T: 020-7602 3316. www.rbkc.gov.uk. Station: High Street Kensington. Off map.*

TOWER BRIDGE EXHIBITION

This bridge is one of London's most famous landmarks. You can tour the engine rooms with a knowledgeable guide. Joint tickets with The Monument available. Daily 9.30am-5pm. Adult £9.80; child £4.20. Check for bridge lift times. *Tower Bridge Rd, SE1 2UP. T: 020-7403 3761. www.towerbridge.org.uk. Station: Tower Hill. E11.*



Now on YouTube

LONDON PLANNER



For inspiring and informative advice, watch our **video guides** to London. We have 60-second travel guides presented by comedian Jay Foreman, celebrity interviews and reviews of the latest openings, from exhibitions to shows.



MY LONDON:
Hugh Bonneville



5 reasons to visit
Michael Jackson: On the Wall at the National Portrait Gallery

Subscribe now at
youtube.com/LondonPlanner

THE QUEEN'S GALLERY
BUCKINGHAM PALACE






Russia

Includes Russia, Royalty and the Romanovs and
Roger Fenton's Photographs of the Crimea, 1855

9 November 2018 – 28 April 2019



ROYAL
COLLECTION
TRUST

www.rct.uk   
+44 (0)303 123 7301

SIGHTSEEING

TOWER OF LONDON

This historic landmark includes the Bloody Tower, Traitors' Gate and the Jewel House.

NEW From 23 Nov: *Tower of London Ice Rink.* Skating returns to the Tower for the season, providing the opportunity to take to the ice in the moat. Skate sessions Mon-Fri 11am-9pm; Sat-Sun 9am-9pm. Adult £14.50; child £10.50. Enjoy free guided tours by 'Beefeaters' (Yeoman Warders). Book ahead online to attend the nightly Ceremony of the Keys, which dates back to 1340 (tickets are free). Tue-Sat 9am-4.30pm; Sun-Mon 10am-4.30pm. Adult £26.80; child £12.70. *Tower Hill, EC3N 4AB.* T: 0844-482 7799. www.hrp.org.uk. Station: Tower Hill. E11.

UP AT THE O2

An unforgettable 90-minute experience which will take you on an uplifting expedition across the roof of The O2. From the viewing platform at the top you can enjoy 360-degree views of the River Thames, Emirates Air Line, Canary Wharf and beyond. Check for times and wheelchair access. From £30. *The O2, Peninsula Square, SE10 0DX.* T: 020-8463 2680. www.theo2.co.uk. Station: North Greenwich. Map inset.

THE VIEW FROM THE SHARD

Ascend the tallest building in Western Europe in a high-speed lift. At 309m up, on a clear day you can see as far as Windsor – and if you can't see four major landmarks you can visit again for free. Sun-Mon 10am-7pm; Thur-Sat 10am-10pm. Advance adult £24.50, child £19.95; on the day adult £30.95, child £24.95. *32 London Bridge St, SE1 9SG.* T: 0844-499 7111. www.theviewfromtheshard.com. Station: London Bridge. E10.

WARNER BROS. STUDIO TOUR LONDON

FAMILY Explore behind the scenes of the legendary *Harry Potter* films with The Making of Harry Potter tour. Visitors can witness iconic sets including the Great Hall, Hagrid's Hut and Diagon Alley. It's a great insight into filmmaking.

NEW From 17 Nov: *Hogwarts in the Snow.* See the Great Hall dressed for the Yule Ball and the Hogwarts model coated in snow, then take a look at the various types of snow that were created (p. 24). Check for times; closed 12-16 Nov. Adult £41; child £33. Booking essential. *Studio Tour Drive, Leavesden, Hertfordshire, WD25 7LS.* T: 0845-084 0900. www.wbstudiotour.co.uk. Station: Euston to Watford Junction, then shuttle bus. Off map.

london transport museum

VISIT
London Transport Museum
in the heart of Covent Garden

KIDS GO FREE

- Discover the story of London
- Exhibitions and design classics
- Early Tube maps and historic vehicles
- Vintage poster displays
- Family play zone

Covent Garden Piazza, WC2E 7BB

MAYOR OF LONDON

ltmuseum.co.uk
Registered charity number 1123122

WINDSOR CASTLE



A ROYAL WEDDING

THE DUKE & DUCHESS OF SUSSEX

26 October 2018 – 6 January 2019

A special exhibition at Windsor Castle

10
WEEKS
ONLY

Book online for guaranteed entry

©PA



ROYAL
COLLECTION
TRUST

www.rct.uk   
+44 (0)303 123 7304

SIGHTSEEING

WELLINGTON ARCH

Climb to the viewing galleries of this magnificent arch for panoramic views over the Royal Parks and Houses of Parliament. Joint tickets available with Apsley House. Daily 10am-4pm. Adult £5.40; child £3.20. *Apsley Way, Hyde Park Corner, W1J 7JZ. T: 020-7930 2726. www.english-heritage.org.uk. Station: Hyde Park Corner. F6.*

WESTMINSTER ABBEY

Consecrated in 1065, this abbey is the crowning and burial site of most English monarchs. It also houses Poets' Corner, the burial place of Charles Dickens and other famous writers. In June, the Abbey unveiled its first major structural addition in more than a quarter of a millennium, The Queen's Diamond Jubilee Galleries. Mon-Fri 9.30am-4.30pm; Sat 9am-2pm; closed 3, 8, 9 & 10 Nov. Wed late opening 4.30pm-7pm, with half-price entry. Abbey only, adult £22; child £9. Abbey and The Queen's Diamond Jubilee Galleries, adult £27; child £9. *20 Dean's Yard, SW1P 3PA. T: 020-7222 5152. www.westminster-abbey.org. Station: Westminster/St James's Park. F7.*



WWT LONDON WETLAND CENTRE

FAMILY This 104-acre wildlife reserve has a Water's Edge Café overlooking lakes, ponds and gardens which are home to more than 100 species of rare and wild birds. Visitors can watch the otters and birds being fed every day, while there are also daily 'Spotlight' talks on various subjects.

Daily 9.30am-4.30pm. Adult £12.72; child £7.72. *Queen Elizabeth's Walk, SW13 9WT. T: 020-8409 4400. www.wwt.org.uk. Station: Barnes. Off map.*

FESTIVALS & EVENTS

HYDE PARK WINTER WONDERLAND

FAMILY From 22 Nov: As well as a Bavarian market, fairground and big wheel, there is a huge outdoor ice rink, a show tent and an immersive cinema experience, based around the children's film, *The Snowman*. Daily 10am-10pm. To avoid crowds, walk from Green Park or Lancaster Gate. Free admission; pre-booked tickets necessary for some shows. *Hyde Park, W2 2UH. T: 0300-061 2000. www.hydeparkwinterwonderland.com. Station: Hyde Park Corner/Marble Arch. E5.*



GoldenTours
Experience London and the UK



Sightseeing Coach Tours • Open Top Bus Tours
Warner Bros. Studio Tour London • London Bike Tours
Attraction Tickets • Groups • UK & Paris Rail Trips

020 7630 2039

www.goldentours.com



Madame Tussauds

LONDON



FEEL THE EXCITEMENT

DISCOVER A WORLD OF FAMOUS FUN

BOOK TODAY AND SAVE AT MADAMETUSSAUDS.COM/LONDON



MERLIN'S
MAGICAL
LONDON

The London Eye is a trademark of the London Eye Group. © 2015 Madame Tussauds Ltd. All rights reserved. Madame Tussauds Ltd. is a registered trademark of Madame Tussauds Ltd.

SIGHTSEEING

RIVER TRIPS

CIRCULAR CRUISE WESTMINSTER

A hop-on, hop-off sightseeing service from Westminster Pier. Mon-Fri departures 11am-3pm; Sat-Sun departures 11am-3.40pm. Adult single £10.25, return £15.25; child single £6.50, return £10. *Westminster Pier, Victoria Embankment, SW1A 2JH. T: 020-7936 2033. www.circularcruise.london. Station: Westminster. F8.*

CITY CRUISES

Daily guided sightseeing tours on the Thames between Westminster, London Eye, Tower and Greenwich piers. River Red Rover is an all-day hop-on, hop-off sightseeing service. Cruises include the London Showboat cabaret, with a meal and music. Check for times and prices. *Departure points vary. T: 020-7740 0400. www.citycruises.com.*

LONDON EYE RIVER CRUISE

Live commentary on a 40-minute sightseeing river cruise. Daily 11.45am-4.45pm. Adult £13.50; child £10. Discounted joint tickets with London Eye available. *London Eye Pier, South Bank, SE1 7PB. T: 0871-781 3000. www.londoneye.com/river-cruise. Station: Waterloo. E8.*

MBNA THAMES CLIPPERS

The fastest and most frequent fleet on the river, with departures from major London piers every 20 minutes. The boats set off from 22 piers. Discounts with Oyster cards and contactless payment. Check for prices. *Departure points vary. T: 020-7001 2200. www.mbnathamesclippers.com.*

THAMES RIVER SERVICES

This hop-on, hop-off service features live audio commentary. Westminster Pier to Greenwich 10.20am-3.30pm; Greenwich to Westminster via St Katharine's 11.20am-4.30pm. Check for prices (35 per cent online discount Mon-Fri). *Westminster Pier, Victoria Embankment, SW1A 2JH. T: 020-7930 4097. www.thamesriverservices.london. Station: Westminster. F8.*

THAMESJET

A 50-minute adrenaline-fuelled experience, combining sightseeing, speed and awesome aquabatics. Departs from Westminster Pier. From 10am, but depends on the tide so check for times. Adult from £39; child from £29. *Westminster Bridge, SE1 7GL. T: 020-7740 0400. www.thamesjet.com. Station: Westminster.*

mbna
thames clippers

For a different view of London
take the River Bus

Buy online or pay as you go using Oyster or Contactless from £4.10
Departures every 20 minutes from major London piers
mbnathamesclippers.com





Coca-Cola
London Eye

BE PART OF LONDON'S SKYLINE



dr.neuro.mama
The Official London Eye

FOLLOW

dr.neuro.mama Perfect first day in London with my babies. The Eye blew them away.

#eyelovelonon #family
#londoneye #makingmemories
#vacation



47 likes
FEBRUARY 3 2018

BOOK TODAY AND SAVE AT LONDONEYE.COM



MERLIN'S
MAGICAL
LONDON

See merlinsmagicallondon.com for full terms.

Save up to 10% when tickets are booked online 24hrs+ in advance. COCA-COLA and the CONTOUR BOTTLE are registered trademarks of The Coca-Cola Company. © 2018 Merlin's Magical London L.L.C. The London Eye is conceived and designed by Marks Barfield Architects. Content shown has been altered for the sake of communications and some images have been captured with professional cameras. All images and logos are for illustrative purposes only.

SIGHTSEEING

TOURS & GUIDED WALKS

BEE MIDTOWN GUIDED WALKS

Themed walking tours around Bloomsbury, Farringdon and Holborn. Check the website for the full programme. Booking not always necessary. *Departure points vary.* T: 020-7078 7077. www.bee-midtown.org.

BIG BUS TOURS

Daily sightseeing trips aboard a fleet of open-top double-decker buses. Tickets are valid for 24 hours. A one-day orientation tour includes a free, 90-minute walking tour and a one-way river cruise. Adult £37; child £19.40. *Departure points vary.* T: 020-7808 6753. www.bigbustours.com.

BIG BUS WALKING TOURS

Enjoy a 90-minute historic and royal guided walk from Trafalgar Square, along Carlton Gardens, the Mall and through St James's Park to Horse Guards Parade, taking in areas that can't be reached by bus. Departs from the Big Bus stop 15 in Trafalgar Square. Free with Big Bus London Tour tickets. Daily 10.30am. *Trafalgar Square, WC2N 5DN.* T: 020-7808 6753. www.bigbustours.com. Station: Charing Cross.

CAPITAL TAXI TOURS

A Blue Badge- or City of London-qualified guide drives you around in a taxi for up to five people. Choose from London tours by day or night, trips outside the city and themed tours. Prices vary and are per taxi. *Departure points vary.* T: 020-8590 3621. www.capitaltaxitours.co.uk.

CITY OF LONDON GUIDES WALKS

Themed walks around the Square Mile. **10 Nov:** *The Lord Mayor's Show.* Join one of the walks around the area (p. 22). Prices range from free to £12.50. www.cityoflondonguides.com.

EVAN EVANS

The oldest and largest sightseeing company in London has been accompanying visitors on city tours and out-of-town excursions since 1930. Check for times and prices. *Departure points vary.* T: 020-7950 1777. www.evanevanstours.com.

GOLDEN TOURS

From day excursions to overnight city breaks, the London expert offers tour experiences in and out of the capital. Check for times and prices. T: 020-7630 2039. www.goldentours.com.

JACK THE RIPPER TOUR

A WALK WORTH INVESTIGATING

"...this is an eerie, historical site... and, without a single prop, Richard Jones succeeds in conjuring more potent memories out of the area than from a neighbourhood full of palaces..." *The Sunday Times*

SEE IT ONLINE BEFORE YOU BOOK

You can follow a step by step guide to our route, read the full Jack the Ripper story and watch videos on our website BEFORE you take the walk:

www.rippertour.com

On our walk we show you original Victorian photographs of the streets through which you are walking as they were in 1888.

We are the only Jack the Ripper Walk to limit the number of participants so booking is essential.



TO BOOK YOUR PLACE PLEASE VISIT OUR WEBSITE
WWW.RIPPERTOUR.COM or TEL: 020 8530 8443

HAVE YOU TRIED THE SLIDE?

RIDE THE WORLD'S LONGEST TUNNEL SLIDE

AT QUEEN ELIZABETH OLYMPIC PARK

A woman in the center and two men behind her have their hair blown upwards by large wind machines. The woman is wearing yellow-rimmed sunglasses and a blue shirt. The man on the right is wearing a light blue shirt. The background shows a red roller coaster structure and a blue sky with clouds.

LONDON'S MOST
HAIR-RAISING EXPERIENCE

#RIDE^{THE}SLIDE

BOOK NOW ARCELORMITTALORBIT.COM

⊖ STRATFORD

 **THE SLIDE**
AT THE ARCELORMITTAL ORBIT


ArcelorMittal

Lit by **PHILIPS**

 **QUEEN
ELIZABETH
OLYMPIC PARK**

SIGHTSEEING

GOLDEN TOURS BIKE TOURS

Embark on a tour of the capital, using either a standard or electric bike. *11a Charing Cross Rd, WC2H 0EP. T: 020-7341 6255. www.goldentours.com. Station: Leicester Square. E8.*

GOLDEN TOURS OPEN-TOP BUS TOURS

The Essential Tour includes an English-speaking guide and there are multilingual commentary tours, too. Three-hour, one-day, 24-, 48- and 72-hour tickets. Check for prices. *Departure points vary. T: 020-7630 2039. www.goldentours.com.*

HAIRY GOAT PHOTOGRAPHY TOURS

Join exploratory photography tours alongside personal, tailor-made or group workshops. Discover pubs, alleys, churches and architecture. *Departure points vary. www.hairygoat.net.*

JACK THE RIPPER TOUR

Blue Badge Guide Richard Jones of London Walking Tours devised these popular two-hour walks in 1982, offering a look at the infamous serial killer. Booking essential. Daily 7pm. £10. *Exit 4, Aldgate East Tube station. T: 020-8530 8443. www.jack-the-ripper-tour.com. Off map.*

THE LONDON HELICOPTER TOUR

Discover the capital from the unique perspective of a helicopter. Choose from the 12-minute Buzz, 18-minute Sights or 30-minute Max tour. Prices start at £200 per seat for a shared tour. *POD Building, Bridges Court, SW11 3BE. T: 020-7887 2626. www.thelondonhelicopter.com. Station: Clapham Junction. Off map.*

LONDON MAGICAL TOURS

The award-winning provider of private and scheduled group tours to London and its surroundings. Discover the UK with your own tour team for no parking worries. You'll have a guide and extra chauffeur, travelling in a private vehicle. Multilingual guides are available in all languages. *Departure points vary. T: 0870-489 0156. www.londonmagicaltours.com.*

LONDON TAILORED TOURS

A series of private tours devised for small groups, run by Londoners. Themed tours include Borough Market, *Harry Potter*, London Sports, Girls Day Out and A Royal Morning in London. Please check for times and prices. *Departure points vary. www.londontailoredtours.com.*

EXPLORE VICTORIAN LONDON



**JACK THE
RIPPER
MUSEUM**

OPEN DAILY 9:30 - 18:30

**SIX FLOORS EXPLORING THE
HISTORY OF JACK THE RIPPER
AND HIS VICTIMS**

RIPPER WALK 3PM DAILY

**VIP, GROUP & PRIVATE
TOURS AVAILABLE**

**20% OFF
ADMISSION
DOOR PRICE**
(with this advert)





12 CABLE STREET, LONDON, E1 8JG

WWW.JACKTHERIPPERMUSEUM.COM

0207 488 9811

THE LONDON BRIDGE EXPERIENCE & LONDON TOMBS

THE UK'S BEST SCARE ATTRACTION

HORRIFYINGLY GOOD
FAMILY FUN!

EXCLUSIVE OFFER!

£5 OFF
VOUCHER

LP1118



TheLondonBridgeExperience.com

The London Bridge Experience, 2-4 Tooley Street, London Bridge, London SE1 2SY

Located directly opposite the The London Bridge Underground (Tooley Street exit).

FREE audio guides available



SIGHTSEEING

LONDON WALKS

London's oldest walking tour company offers more than 300 walks. Each takes around two hours and there's no need to book. Adult £10; child free when accompanied by an adult. T: 020-7624 3978. *Departure points vary. www.walks.com.*

MEGASIGHTSEEING LONDON BUS TOURS

This open-top tour bus option comes from the company behind megabus.com. Like its transport service, www.megasightseeing.com, offers its services at a low price: from £1, plus booking fee. With 50 stops around London, tours depart daily every hour between 10am and 5pm, from the London Eye, Tower of London and Park Lane. T: 0141-352 4444. www.megasightseeing.com.

ORIGINAL LONDON SIGHTSEEING WALK

Original London Visitor Centre's 90-minute walks depart daily. Choose from Changing the Guard at 10am; Rock 'n' Roll at 1pm and Jack the Ripper at 4pm (from The Original Tour bus stop at Tower Hill). £9 per walk, or free with an Original London Sightseeing Tour ticket. 17-19 Cockspur St, off Trafalgar Square, SW1Y 5BL. T: 020-8877 1722. www.theoriginaltour.com.

THE ORIGINAL TOUR

These live and multilingual bus tours let you hop-on and hop-off. 24-hour adult £32, child £15; 48-hour adult £42, child £20. 17-19 Cockspur St, off Trafalgar Square, SW1Y 5BL. T: 020-8877 1722. www.theoriginaltour.com.

ROYAL ALBERT HALL TOURS

Tour this Victorian concert hall. Daily 10am-4pm; no tours 8-10 Nov. Adult £14; child £7. Kensington Gore, SW7 2AP. T: 020-7959 0558. www.royalalberthall.com. Station: South Kensington. F4.

ROYAL OPERA HOUSE

One of the world's leading opera venues and home to the Royal Ballet Company; it is currently being refurbished. Check for tours. £10-£15 per person. Bow St, WC2E 9DD. T: 020-7304 4000. www.roh.org.uk/tours. Station: Covent Garden. D8.

SEE LONDON BY NIGHT TOUR

Ride around the West End and City after dark. Departs from outside The Ritz hotel. Daily 7.30pm & 9.20pm. Adult £21; child £12. 150 Piccadilly, W1J 9BR. T: 020-7183 4744. www.seelondonbynight.com. Station: Green Park. E6.



50 YEARS

LONDON WALKS®

Over 100 walks every week
london@walks.com
 020 7624 3978
www.walks.com



London looks amazing, beautifully lit up at night

Departing daily from Green Park bus stop next to the Ritz Hotel at 19:30 and 21:20

Spectacular live guided tours of London by night

Adult - £21, Child - £12

Tel: 0844 504 3285 | +44 (0)20 7183 4744

Private tours available for groups day or night



www.seelondonbynight.com

GROUPS 15+
Special rates
apply



TOURS

THE GRAND TOUR

WITH AFTERNOON TEA

EXPLORE LONDON'S MOST FAMOUS MUSIC VENUE ON A FASCINATING
TOUR WITH LIVE GUIDE FOLLOWED BY A TRADITIONAL AFTERNOON TEA



Royal Albert Hall

Book online for the best priced tickets

royalalberthall.com

Call: 020 7589 8212

SIGHTSEEING

SHAKESPEARE'S GLOBE

Tour this reconstruction of William Shakespeare's original Elizabethan Globe Theatre, as well as the Sam Wanamaker Playhouse – an atmospheric, candlelit performance space. Check for times and prices. 21 New Globe Walk, Bankside, SE1 9DT. T: 020-7902 1400. www.shakespearesglobe.com. Station: Blackfriars. E10.

TWIZY TOURS

Hire a two-seater electric Renault Twizy, then drive yourself around the streets of London accompanied by a guided audio tour. Prices from £29.99 per tour. Apcoa Parking Car Park, 21 Bryanston St, W1H 7AB. T: 07376-428 363. www.twizytours.com. Station: Marble Arch. D5.

YONDA

Feel like a real Londoner as you drive a car around the capital's top sights and lesser-known streets. The car is fitted with technology that guides you. Tours take 90 minutes. £30 per tour in a two-seat convertible car; £40 per tour in a four-seat car, with a clear panoramic roof. Q-Park, Park Lane, W1K 7AN. T: 020-3621 5662. www.goyonda.com. Station: Marble Arch. E6.

OUT OF TOWN

HAMPTON COURT PALACE

This Tudor palace and 300-year-old maze is set in 60 acres of parkland on the river. Daily 10am-4.30pm. Adult £22.70; child £11.35. East Molesey, Surrey, KT8 9AU. T: 0844-482 7777. www.hrp.org.uk. Station: Waterloo to Hampton Court. Off map.

PALACE OF HOLYROODHOUSE

The Queen's official residence in Scotland. Daily 9.30am-4.30pm. Adult £14; child £8.10. Canongate, The Royal Mile, Edinburgh, EH8 8DX. T: 0303-123 7306. www.royalcollection.org.uk/palaceofholYROODHOUSE. Station: Edinburgh Waverley. Off map.

WINDSOR CASTLE

The Queen's weekend home and the world's oldest inhabited castle. **To 6 Jan 2019:** A Royal Wedding: The Duke and Duchess of Sussex. See the wedding outfits. Daily 10am-4.15pm; State Apartments closed 2 Nov. Adult £21.20; child £12.30. Windsor, Berkshire, SL4 1NJ. T: 0303-123 7304. www.royalcollection.org.uk/windsorcastle. Station: Waterloo to Windsor & Eton Central or Windsor & Eton Riverside. Off map.

THE ORIGINAL TOUR

DISCOVER LONDON

HOP-ON HOP-OFF
theoriginaltour.com

20% DISCOUNT ONLINE WITH PROMO CODE (LP11)



EXPLORE LONDON ON THE WATER

A MODERN DINING EXPERIENCE

BATEAUX
COLLECTION

MUSEUMS & GALLERIES

TOP DRAW

Combine culture with shopping for souvenirs at **The London Illustration Fair** (30 Nov-2 Dec). Head to the Bargehouse at OXO Tower Wharf to browse art, prints and merchandise from London-based artists and designers and talent from further afield. www.thelondonillustrationfair.co.uk

CRISIS POINTS

*Journeys Drawn: Illustration from the Refugee Crisis at the **House of Illustration** (from 9 Nov; p. 53) displays the works of 13 artists. See portraitist Olivier Kugler's pieces drawn in the Calais 'Jungle', as well as detailed observations of the Syrian crisis and animations from the prize-winning Iranian political refugee Majid Adin.*

LIVING COLOUR

What unites Lady Gaga, President Kennedy and old toy cars? That'll be the new exhibition from British duo Miss Bugs, **Echo Chamber**, which is popping up in the art gallery, 10 Hanover (9-14 Nov). The artists have created 15 large works made from tiny, colourful objects such as Japanese charms and LEGO figures. www.missbugs.com



ROYAL RELATIONSHIPS

It may be difficult to imagine this in 2018, but there was a time when Anglo-Russian relations were incredibly strong and – judging by a new art exhibition opening this month – perhaps even blissful.

Russia: Royalty & the Romanovs at The Queen's Gallery (from 9 Nov; p. 59) turns the clock back to 1698, a vital time for the royal families of Russia and Britain. This was the year when Tsar Peter I visited England for the first time. It had been a long time coming: courageous London merchants first set sail for Russia in 1553 (they were actually looking for Asia) and had been trading ever since.

With this first-ever visit from a Russian head of state, the British royal family discovered an exciting new social circle with whom to exchange art. The Royal Collection has picked out these pieces for *Royalty & the Romanovs*.

The star of the show is a sensational 1887 painting

of Queen Victoria, surrounded by her family, which is the work of Danish artist Laurits Regner Tuxen. The painting, which was commissioned for Victoria's 50th year on the throne, depicts a large crowd and brims with staggering detail.

If you're a bit of a magpie, you'll find some extremely shiny items to catch your eye: Peter Carl Fabergé's pieces are unmissable. He had become the Russian Imperial Crown's appointed goldsmith by the late 19th century and, as the country's royal family became closer to Britain's, his creations made for suitably lavish gifts.

The House of Fabergé opened a London branch in 1903, the same year that King Edward VII was given the exhibition's gold cigarette case, to mark his 40th wedding anniversary. Also on display is a hypnotic Fabergé brooch, with diamonds circling a Siberian amethyst. This combination of royals, drama and pageantry is a thrill.

– Neil Simpson

MUSEUMS

BANK OF ENGLAND MUSEUM

Explore the story of the bank from its foundation in 1694, to its status today as the UK's central bank. The *Feliks Topolski: Drawing Debben* exhibition showcases his sketches. Mon-Fri 10am-5pm; closed bank hols. Admission free. *Threadneedle St, EC2R 8AH*. T: 020-7601 5545. www.bankofengland.co.uk/museum. Station: Bank. D10.

BODY WORLDS

Dr Gunther von Hagens' exhibition of real human bodies contains 200 exhibits that explore how every part of the body works, using the latest plastination technology. Sun-Thur 9.30am-7pm; Fri-Sat 9.30am-9pm. Advance adult £24.50, child £17.50; on the day adult £29, child £22. *The London Pavilion, 1 Piccadilly Circus, W1J 0DA*. T: 033-0223 3233. www.bodyworlds.co.uk. Station: Piccadilly Circus. E7.

THE BRITISH MUSEUM

See an unrivalled collection of antiquities.

NEW From 8 Nov: *I am Ashurbanipal: King of the World, King of Assyria*. The story of Ashurbanipal, who ruled the vast, ancient empire of Assyria until 627 BC. Sat-Thur 10am-5.30pm; Fri 10am-8.30pm. Admission free; charges for some exhibitions. *Great Russell St, WC1B 3DG*. T: 020-7323 8299. www.britishmuseum.org. Station: Tottenham Court Road/Russell Square. D7/8.

CHURCHILL WAR ROOMS

Explore the secret bunker where Sir Winston Churchill worked during World War II. Daily 9.30am-6pm. Adult £21; child £10.50. *Clive Steps, King Charles St, SW1A 2AQ*. T: 020-7930 6961. www.iwm.org.uk. Station: Westminster. F7.

THE FAN MUSEUM

Unusual museum dedicated to the art of the fan. Afternoon tea is served in the orangery, which has a beautiful mural. Tue-Sat 11am-5pm; Sun noon-5pm. Adult £5; child £3. *12 Crooms Hill, SE10 8ER*. T: 020-8305 1441. www.thefanmuseum.org.uk. Station: Cutty Sark. Off map.

FLORENCE NIGHTINGALE MUSEUM

Learn about the 19th-century British nurse and health reformer. Free 15-min tour Mon-Fri 3.30pm; Sat-Sun 11.30am & 3.30pm. Daily 10am-5pm. Adult £7.50; child £3.80. *St Thomas' Hospital, 2 Lambeth Palace Rd, SE1 7EW*. T: 020-7188 4400. www.florence-nightingale.co.uk. Station: Waterloo/Westminster. F8.

THE GUARDS MUSEUM

Discover the history, stories and regimental heritage of the five regiments of the Foot Guards, which today watch over the Royal Palaces. It's a great insight into the Changing the Guard ceremony. Daily 10am-4pm; closed 11 Nov. Adult £8; child free. *Wellington Barracks, Birdcage Walk, SW1E 6HQ*. T: 020-7414 3271. www.theguardsmuseum.com. Station: St James's Park/Westminster. D5.

HOUSE OF ILLUSTRATION

Public gallery dedicated solely to illustration.

NEW From 9 Nov: *Journeys Drawn: Illustration from the Refugee Crisis*. Work inspired by journeys made by refugees (p. 52). Tue-Sun 10am-6pm. Adult £7.50; child £4. *2 Granary Square, N1C 4BH*. T: 020-3696 2020. www.houseofillustration.org.uk. Station: King's Cross St Pancras. Off map.

AN EMPIRE RETURNS

Speed back in time to a world of Babylonians, Hittites and Mesopotamians at **The British Museum** this month, where you'll discover an exhibition dedicated to the ancient empire of Assyria. *I am Ashurbanipal: King of the World, King of Assyria* (from 8 Nov) tells the story of one man who ruled a vast kingdom from his throne in what is now Iraq. Ashurbanipal appointed himself 'king of the world' until his death destroyed the empire in 627 BC – witness the sculptures, ivory and gold ornaments of his majestic lifestyle.





BY APPOINTMENT TO HER MAJESTY QUEEN ELIZABETH II
TEA & COFFEE MERCHANTS R. TWINING AND COMPANY LIMITED, LONDON

TWININGS

216 STRAND LONDON

TASTING BAR & TEA SHOP



SHOP

TASTE

LEARN

The oldest tea shop in London.

Welcome to our 300 year old historical flagship store.

Shop favourite Twinings blends, gifts and premium teas from around the world, sample new flavours at our state of the art Loose Tea Bar and sign up for a Masterclass with one of our expert Tea Ambassadors.



Pick up a gift
or two for Christmas



A warm winter welcome awaits!

Telephone 0207 353 3511 | Email strand@twinings.com

www.twinings.co.uk/about-twinings/216-strand



MUSEUMS & GALLERIES

HOUSEHOLD CAVALRY MUSEUM

Discover the duties and roles of the Household Cavalry Regiments. Daily 10am-5pm. Adult £8; child £6. *Horse Guards, Whitehall, SW1A 2AX.* T: 020-7930 3070. www.householdcavalrymuseum.co.uk. Station: Westminster/Embankment. E7/8.

IMPERIAL WAR MUSEUM

Huge displays relating to global conflicts from World War I to contemporary confrontations. The *Making a New World* season marks 100 years since the end of World War I. Daily 10am-6pm. Admission free; charges for some exhibitions. *Lambeth Rd, SE1 6HZ.* T: 020-7416 5000. www.iwm.org.uk. Station: Lambeth North/Waterloo. E5.

JACK THE RIPPER MUSEUM

Discover the history of London's East End during the 1880s and hear the gruesome story of the serial killer. Daily 9.30am-6.30pm. Adult £12; child £8. *12 Cable St, E1 8JG.* T: 020-7488 9811. www.jacktherippermuseum.com. Station: Aldgate East/Tower Hill. Off map.

LEIGHTON HOUSE MUSEUM

The restored former home of Frederic, Lord Leighton features paintings, drawings and sculptures. Wed-Mon 10am-5.30pm; tour every Wed and Sun. Adult £9; child £7. *12 Holland Park Rd, W14 8LZ.* T: 020-7602 3316. www.rbkc.gov.uk. Station: Kensington Olympia. Off map.

LONDON FILM MUSEUM

Bond in Motion is the largest official exhibition of James Bond vehicles that feature in the renowned film series. Daily 10am-6pm. Adult £14.50; child £9.50. *45 Wellington St, WC2E 7BN.* T: 020-7836 4913. www.londonfilmmuseum.com. Station: Covent Garden. E8.

LONDON MITHRAEUM

Cultural hub showcasing a Roman temple which was built here nearly 2,000 years ago. Tue-Sat 10am-6pm; Sun & bank hols noon-5pm; first Thur of the month 10am-8pm. Admission free. *12 Walbrook, EC4N 8AA.* T: 020-7330 7500. www.londonmithraeum.com. Station: Bank. D10.

LONDON TRANSPORT MUSEUM

FAMILY Discover the story of London's transport system. Highlights include iconic red buses, the world's first Underground steam train and a train carriage dating back to the 1890s. Daily 10am-6pm. Adult £17.50; child free. *Covent Garden Piazza, WC2E 7BB.* T: 020-7379 6344. www.ltmuseum.co.uk. Station: Covent Garden. E8.



A GLIMPSE OF GREATNESS

Klimt/Schiele: Drawings from the Albertina Museum, Vienna at the **Royal Academy of Arts** (from 4 Nov; p. 59) features two of Austria's most celebrated artists, Gustav Klimt and Egon Schiele. Their works are on loan from the Albertina Museum in Vienna, the city in which both men died within months of each other a century ago. See a Klimt sketch on Japanese paper depicting the same intimate embraces that made *The Kiss* iconic. The stark honesty of Schiele's angular sketches of nude women, meanwhile, is captivating.

MUSEUM OF LONDON

FAMILY The world's largest urban history museum transports you through the capital's tumultuous history to the present day. **10 Nov:** *London at War*. Family activity day (p. 8). Please check for regular events. Daily 10am-6pm. Admission free; charges for special exhibitions and walking tours. *150 London Wall, EC2Y 5HN.* T: 020-7001 9844. www.museumoflondon.org.uk. Station: Barbican. D10.

NATIONAL ARMY MUSEUM

Interactive displays and exhibitions telling the story of soldiers' lives from Tudor times to the present day. Daily 10am-5.30pm and until 8pm on the first Wed of every month. Admission free; charges for some exhibitions. *Royal Hospital Rd, SW3 4HT.* T: 020-7730 0717. www.nam.ac.uk. Station: Sloane Square. G5.

The Design Museum



Victoria and Albert Museum



Museum of London



The Horniman Museum

FREE

London museums

There's no need to spend a lot of money to fill your time in London. Many of the city's best and biggest attractions are completely free to enter – take a look at our selection of London's top free museums.

SOUTH KENSINGTON'S MUSEUMS

During Queen Victoria's reign, her husband Prince Albert built world-class museums right next to each other in South Kensington. See prehistoric fossils, dinosaurs and taxidermy at the **Natural History Museum**, or head to the child-friendly **Science Museum** with its rockets and steam engines. The **Victoria and Albert Museum** is a leading museum of art and design, covering architecture, furniture, fashion and photography. www.nhm.ac.uk; www.sciencemuseum.org.uk; www.vam.ac.uk

THE BRITISH MUSEUM Bloomsbury

This iconic building houses treasures including the Rosetta Stone and Egyptian mummies. Travel through time and around the world with a free paper guide in hand so you don't miss the highlights. www.britishmuseum.org

THE DESIGN MUSEUM Kensington

The museum offers an introduction to the history of contemporary design with the free display *Designer Maker User*, and opportunities to explore the present and future of design through pop-ups and temporary exhibitions. www.designmuseum.org

MUSEUM OF LONDON The City

This is the world's largest urban history museum, which has thousands of exhibits in nine galleries, including Roman and Medieval displays. Its sister museum in east London, the **Museum of London Docklands**, offers an insight into this historic area of the capital. www.museumoflondon.org.uk

THE HORNIMAN MUSEUM Forest Hill

This is the former home of Victorian Londoner Frederick John Horniman, who was a tea trader and philanthropist. Explore his huge collection of objects, specimens and artefacts from all over the world. There's an aquarium, butterfly house and a music gallery, as well as a 16-acre garden. www.horniman.ac.uk

MUSEUMS & GALLERIES

NATIONAL MARITIME MUSEUM

FAMILY Get up close to the objects that made history – from iconic exhibits to great British art – at the world's largest maritime museum. Daily 10am-5pm. Admission free; charges for guided tours, events and exhibitions. *Romney Rd, SE10 9NF*. T: 020-8858 4422. www.rmg.co.uk. Station: Greenwich/Cutty Sark. Map inset.

NATURAL HISTORY MUSEUM

FAMILY Exhibits range from the Images of Nature gallery, to dinosaur skeletons and fossils. **To 6 Jan:** *Life in the Dark*. Discover how animals have adapted to life in the darkest corners of our planet. Daily 10am-5.50pm. Admission free; charges for special exhibitions. *Cromwell Rd, SW7 5BD*. T: 020-7942 5000. www.nhm.ac.uk. Station: South Kensington. F4.

THE POSTAL MUSEUM

FAMILY Explore postal history and ride on the underground mail rail. Daily 10am-5pm. Museum only: adult £11; child free. Museum and rail: adult £17.05; child £10.45. *15-20 Phoenix Place, WC1X 0DA*. T: 030-0030 0700. www.postalmuseum.org. Station: Russell Square. C8.

QUEEN'S HOUSE

Located in the heart of Greenwich, this royal villa was designed by Inigo Jones and is a pioneering masterpiece of 17th-century architecture. Daily 10am-5pm. Admission free; charge for guided tour. *Queen's House, Romney Rd, SE10 9NF*. T: 020-8858 4422. www.rmg.co.uk. Station: Cutty Sark. Map inset.

ROYAL AIR FORCE MUSEUM

National aviation museum focusing on the Royal Air Force, with more than 100 types of aircraft on show, including the chance to climb inside selected planes. Daily 10am-6pm. Admission free; charges for special experiences. *Grahame Park Way, NW9 5LL*. T: 020-8205 2266. www.rafmuseum.org.uk. Station: Colindale. Off map.

SCIENCE MUSEUM

FAMILY A huge museum dedicated to science, technology and medical achievements. There's a Red Arrows 3D flight simulator and an IMAX theatre. In *The Sun: Living with Our Star*, discover how the sun has been harnessed by humans. Daily 10am-6pm; adult-only Lates programme last Wed of every month, 6.45pm-10pm. Admission free; charges for special exhibitions. *Exhibition Rd, SW7 2DD*. T: 0333-241 4000. www.science museum.org.uk. Station: South Kensington. F4.



SISTER ACT

If you're familiar with Snapchat, filters and pouting, you might experience twinges of recognition at the **National Portrait Gallery's** new show. *Gainsborough's Family Album* (from 22 Nov; p. 59) brings together portraits of the British artist's daughters with other family paintings. It's a moody, atmospheric collection which displays just how good Margaret and Mary were at posing. *The Artist's Daughters with a Cat* depicts the sisters on the edge of adolescence, brimming with self-confidence and cradling an agitated, half-painted cat. It's intriguing to see such modern human behaviour reflected in an 18th-century painting.

SOMERSET HOUSE

Home to the Embankment Galleries, cafés and restaurants, all of which overlook a large courtyard. **NEW From 14 Nov:** *Skate at Somerset House*. The rink returns (p. 26). Galleries Wed-Fri 11am-8pm; Sat-Tue 10am-6pm. Admission free; charges for special exhibitions. *Strand, WC2R 1LA*. T: 020-7845 4600. www.somersetthouse.org.uk. Station: Temple. E8.

TWININGS MUSEUM

The flagship store of Twinings the tea maker since 1706 has a display reflecting the company's 300-year history. Mon-Fri 9.30am-7pm; Sat 10.30am-5.30pm; Sun 11am-5pm. Admission free. *216 Strand, WC2R 1AP*. T: 020-7353 3511. www.twinings.co.uk. Station: Temple. D9.

VICTORIA AND ALBERT MUSEUM

Outstanding collection of fine and applied arts.
To 24 Feb: *Videogames: Design/Play/Disrupt*. Exploring videogame design influences, as well as the cultural impact that gaming has had on the world. Sat-Thur 10am-5.45pm; Fri 10am-10pm. Admission free; charges for special exhibitions. *Cromwell Rd, SW7 2RL*. T: 020-7942 2000. www.vam.ac.uk. Station: South Kensington. F4/5.

V&A MUSEUM OF CHILDHOOD

National collection of childhood objects dating back to the 16th century. Daily 10am-5.45pm. Admission free. *Cambridge Heath Rd, E2 9PA*. T: 020-8983 5200. www.museumofchildhood.org.uk. Station: Bethnal Green. Off map.

THE WALLACE COLLECTION

The former Wallace family home displays a splendid collection of Rococo art, furniture and suits of armour. Free tours on selected dates. Daily 10am-5pm. Admission free. *Hertford House, Manchester Square, W1U 3BN*. T: 020-7563 9500. www.wallacecollection.org. Station: Bond Street. D6.

GALLERIES

GUILDHALL ART GALLERY

See paintings collected by the City of London since the 17th century, including pre-Raphaelites. It also houses the Roman Amphitheatre, discovered in 1988. Mon-Sat 10am-5pm; Sun noon-4pm. Admission free; charges for special exhibitions. *Guildhall Yard, off Gresham St, EC2V 5AE*. T: 020-7332 3700. www.cityoflondon.gov.uk. Station: St Paul's/Bank. D10.

HAYWARD GALLERY

Art exhibitions inside the Southbank Centre.
To 6 Jan: *Space Shifters*. Sculptures inspired by space. Check for times. Admission free; charges for special exhibitions. *Belvedere Rd, SE1 8XX*. T: 020-3879 9555. www.southbankcentre.co.uk. Station: Waterloo. E8.

THE NATIONAL GALLERY

Visit one of the world's greatest art galleries.
To 27 Jan: *Mantegna and Bellini*. Exploring the work of the Renaissance artists. Sat-Thur 10am-6pm; Fri 10am-9pm. Admission free; charges for special exhibitions. *Trafalgar Square, WC2N 5DN*. T: 020-7747 2885. www.nationalgallery.org.uk. Station: Charing Cross. E7.

NATIONAL PORTRAIT GALLERY

Works depicting famous British people.
NEW From 22 Nov: *Gainsborough's Family Album*. Family paintings by the portraitist (p. 58). Sat-Thur 10am-6pm; Fri 10am-9pm. Admission free; charges for special exhibitions. *St Martin's Place, WC2H 0HE*. T: 020-7312 2463. www.npg.org.uk. Station: Leicester Square. E7.

THE PHOTOGRAPHERS' GALLERY

London's largest gallery devoted to photography. Check for times. Admission free before noon, then £4; child free. *16-18 Ramillies St, W1F 7LW*. T: 020-7087 9300. www.thephotographersgallery.org.uk. Station: Oxford Circus. D7.

THE QUEEN'S GALLERY

Smart gallery adjoining Buckingham Palace.
NEW From 9 Nov: *Russia: Royalty & the Romanovs*. Examining the strong bond between the British and Russian royal families (p. 52). Daily 10am-5.30pm; closed between exhibitions. Adult £12; child £6. *Buckingham Palace, SW1A 1AA*. T: 0303-123 7301. www.royalcollection.org.uk/queensgallerylondon. Station: Green Park/Hyde Park Corner. F7.

ROYAL ACADEMY OF ARTS

Royal Academy Collection works.
NEW From 4 Nov: *Klimt / Schiele: Drawings from the Albertina Museum, Vienna*. Drawings by the Austrian artists (p. 56). Sat-Thur 10am-6pm; Fri 10am-10pm. Admission free; charges for special exhibitions. *6 Burlington Gardens, off Piccadilly, W1J 0BD*. T: 020-7300 8000. www.royalacademy.org.uk. Station: Piccadilly Circus/Green Park. E7.

TATE BRITAIN

The nation's leading collection of British art.
To 24 Feb: *Edward Burne-Jones*. See fantastical paintings by the Victorian British artist. Daily 10am-6pm. Admission free; charges for special exhibitions. *Millbank, SW1P 4RG*. T: 020-7887 8888. www.tate.org.uk. Station: Pimlico. G8.

TATE MODERN

See modern art in a former power station.
To 24 Feb: *Tania Bruguera*. The artist's work takes over the huge Turbine Hall. Sun-Thur 10am-6pm; Fri-Sat 10am-10pm. Admission free; charges for special exhibitions. *Bankside, SE1 9TG*. T: 020-7887 8888. www.tate.org.uk. Station: Southwark. E9.



Leyla
McCalla



MELODY MAKERS

THEY WILL ROCK YOU

Tribute act *Queen Extravaganza* – created by Queen's original members Roger Taylor and Brian May – are set to rock the Eventim Apollo on their UK tour, **Queen Greatest Hits** (22 Nov). www.eventimapollo.com

STARS IN YOUR EYES

John Williams' *Star Wars* score is one of the most famous movie soundtracks ever. Hear the music live as the London Symphony Orchestra accompanies a film screening of **Star Wars: A New Hope** at the Royal Albert Hall (16-18 Nov; p. 71).



One of the world's biggest jazz celebrations – **EFG London Jazz Festival** (16-25 Nov) – is back. Now in its 26th year, this popular festival brings big names and emerging talent to numerous venues around the city. Previous guests have included Seal and Paloma Faith. So what can you expect?

The festival launches at the Royal Festival Hall (16 Nov). This year, Guy Barker's 42-piece orchestra will play. You might also recognise Lea DeLaria (*Boo in Orange is the New Black*), who will play hits from her sixth album at the Bridge Theatre (18 Nov).

The shows are designed to make you think. This year marks the 70th anniversary of the docking of MV *Empire Windrush*, which brought Caribbean migrants to this country after World War II – marking the beginning of multicultural Britain. The British-Trinidadian musician Anthony Joseph explores this diaspora while performing *Windrush Suite* by saxophonist

Jason Yarde at the Barbican (17 Nov). He will perform with a pan-Caribbean ensemble and calypso artists Mighty Sparrow and Calypso Rose.

Leyla McCalla honours her ancestry and social justice at Cadogan Hall (20 Nov).

She sings alongside Mélissa Laveaux, who celebrates her Haitian ancestry on her new album, *Radvo Siwei*. Another highlight is a tribute to world-renowned trumpeter, bandleader and anti-apartheid activist Hugh Masekela, who died earlier this year. Catch it at the Royal Festival Hall (19 Nov).

For something different, go to Bobby McFerrin's *Circlesongs* at the Barbican (18 Nov). Inspired by beatboxers, the *Don't Worry, Be Happy* singer is joined by an a cappella choir combining comical noises, silence and invented language.

Last but not least, the final of the BBC Young Jazz Musician at the Queen Elizabeth Hall (24 Nov) hosts the five finalists, who will each play a set. www.efglondonjazzfestival.org.uk – Sarah Riches

MUSICALS & PERFORMANCES

ALADDIN

FAMILY This Broadway and West End hit has a stellar cast, lyrics by Tim Rice, and a magic carpet. Check for times. Tickets £27.25-£99.75. *Prince Edward Theatre, Old Compton St, W1D 4HS. T: 0844-482 5151. www.aladdinthemusical.co.uk. Station: Tottenham Court Road. D7.*

BAT OUT OF HELL

Meat Loaf musical with motorbikes and flames on stage. Check for times. Tickets £20-£150. *Dominion Theatre, 268-269 Tottenham Court Rd, W1T 7AQ. T: 0845-200 7982. www.batoutofhellmusical.com. Station: Tottenham Court Road. D7.*

THE BOOK OF MORMON

This controversial satire, from the writers of TV's *South Park*, follows the exploits of two hapless missionaries from the Church of Latter Day Saints. Check for times. Tickets £25-£202.25. *Prince of Wales, Coventry St, W1D 6AS. T: 0844-482 5110. www.bookofmormonlondon.com. Station: Leicester Square/Piccadilly Circus. E7.*

CHICAGO THE MUSICAL

Come for the jazz, stay for the dark comedy and lively dance numbers. Mon-Sat 7.30pm; Wed & Sat 2.30pm. Tickets £25-£125. *Phoenix Theatre, 110 Charing Cross Rd, WC2H 0JP. T: 0843-316 1082. www.phoenixtheatrelondon.co.uk. Station: Tottenham Court Road. E7.*

DREAMGIRLS

To 12 Jan: Follow the journey of a young female singing trio from Chicago. Mon-Sat 7.30pm; Wed & Sat 2.30pm. Tickets £19.50-£175. *Savoy Theatre, Strand, WC2R 0ET. T: 0844-871 7687. www.savoytheatre.org. Station: Covent Garden. E8.*

EVERYBODY'S TALKING ABOUT JAMIE

This feel-good musical tells the story of how a teenage boy overcomes bullies and prejudice. Mon-Sat 7.30pm; Wed & Sat 2.30pm. Tickets £20-£85. *Apollo Theatre, 31 Shaftesbury Ave, W1D 7ES. T: 0330-333 4809. www.everybodystalkingaboutjamie.co.uk. Station: Piccadilly Circus. E7.*

42ND STREET

Romantic comedy following an authoritarian director as he stages a musical during the Great Depression. Check for times. Tickets £15-£125. *Theatre Royal Drury Lane, Catherine St, WC2B 5JF. T: 0844-858 8877. www.42ndstreetmusical.co.uk. Station: Covent Garden. D8.*

HADESTOWN

NEW From 2 Nov: American folk music and New Orleans jazz are used to reimagine an ancient tale. Check for times. Tickets £15-£67. *National Theatre, South Bank, SE1 9PX. T: 020-7452 3000. www.nationaltheatre.org.uk. Station: Waterloo. E8.*

HAMILTON

Musical about the American Founding Father Alexander Hamilton. Please check for times and prices. *Victoria Palace, Victoria St, SW1E 5EA. T: 0844-482 5138. www.hamiltonthemusical.co.uk. Station: Victoria. F6.*

HEATHERS THE MUSICAL

LAST CHANCE To 24 Nov: Dark high-school comedy based on the cult 1980s film. Check for times. Tickets £15-£75. *Theatre Royal Haymarket, Haymarket, SW1Y 4HT. T: 020-7930 8800. www.trh.co.uk. Station: Piccadilly Circus. E7.*



The Olivier Award-winning musical *Caroline, or Change* is transferring to the **Playhouse Theatre** (from 20 Nov) following stints at the Hampstead Theatre and Chichester Festival. Tony Kushner (*Angels in America*) wrote the script, which is inspired by his childhood. As the civil rights movement gathers pace in 1963 Louisiana, change is in the air. Noah, eight, slips his black maid Caroline some extra cash, setting off an unexpected chain of events. The show includes blues, Motown and Jewish music. *Northumberland Ave, WC2N 5DE. T: 0844-871 7631. www.atgtickets.com*

KINKY BOOTS

Fun musical about a shoe factory, which reinvigorates its business after its new owner decides to produce knee-high boots for drag queens. With music by Cyndi Lauper. Mon-Sat 7.30pm; Wed & Sat 2.30pm. Tickets £19.50-£125. *Adelphi Theatre, 409-412 Strand, WC2R 0NS. T: 0844-579 0094. www.kinkybootsthemusical.co.uk. Station: Charing Cross. E8.*

LES MISÉRABLES

The world's longest-running musical, adapted from Victor Hugo's classic novel, is set in post-revolutionary France. Mon-Sat 7.30pm; Wed & Sat 2.30pm. Tickets £42.25-£177.25. *Queen's Theatre, 51 Shaftesbury Ave, W1D 6BA. T: 0844-482 5160. www.lesmis.com. Station: Leicester Square/Piccadilly Circus. D8.*

DISNEY'S THE LION KING

FAMILY Wonderful adaptation of the popular Disney film with ingenious costumes and inventive puppetry. Tue-Sat 7.30pm; Wed & Sat 2.30pm. Tickets £23-£200.25. *Lyceum Theatre, 21 Wellington St, WC2E 7RQ. T: 0844-871 3000. www.thelionking.co.uk. Station: Covent Garden. E8.*

MAMMA MIA!

FAMILY A tribute to the music of Swedish band ABBA, with a feel-good story set on a Greek island. Mon-Sat 7.45pm; Thur & Sat 3pm. Tickets £27.25-£127.25. *Novello Theatre, Aldwych, WC2B 4LD. T: 0844-482 5115. www.mamma-mia.com. Station: Covent Garden/Temple. E8.*

MATILDA THE MUSICAL

FAMILY Fantastic show based on Roald Dahl's children's book about a girl with magic powers. Tue 7pm; Wed-Sat 7.30pm; Wed & Sat 2.30pm; Sun 3pm. Tickets £25-£122.50. *Cambridge Theatre, 32-34 Earlam St, WC2 9HU. T: 0844-412 4652. www.matildathemusical.com. Station: Covent Garden. D8.*

MOTOWN THE MUSICAL

Brilliant, feel-good musical based on the story of legendary Motown Records. By the end of the night you'll be *Dancing in the Street*. Please check for times and prices. *Shaftesbury Theatre, 210 Shaftesbury Ave, WC2H 8DP. T: 020-7379 5399. www.shaftesburytheatre.com. Station: Tottenham Court Road/Holborn. D8.*

THE PHANTOM OF THE OPERA

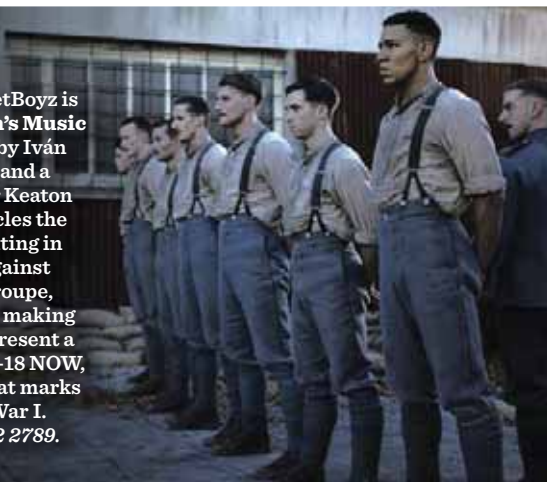
Long-running Gothic drama in which a mysterious masked man haunts the Paris Opera House. Mon-Sat 7.30pm; Thur & Sat 2.30pm. Tickets £25-£175. *Her Majesty's Theatre, 57 Haymarket, SW1Y 4QL. T: 0844-412 2707. www.thephantomoftheopera.com. Station: Piccadilly Circus. E7.*

SCHOOL OF ROCK: THE MUSICAL

Andrew Lloyd Webber's latest musical, based on the film of the same name, was a hit on Broadway and it's a smash here, too. Mon & Wed-Sat 7.30pm; Thur & Sat 2.30pm; Sun 3pm. Tickets £15-£150. *Gillian Lynne Theatre, 166 Drury Lane, WC2B 5PF. T: 020-7452 3000. www.schoolofrockthe musical.com. Station: Covent Garden. D8.*

WAR AND PEACE

The all-male dance company BalletBoyz is performing *Young Men* at Wilton's Music Hall (13-17 Nov). Choreographed by Iván Pérez, the show blends dance, film and a live score by the singer-songwriter Keaton Henson. The performance chronicles the experiences of young soldiers fighting in World War I. This version is set against a backdrop of a film made by the troupe, which was broadcast on BBC TV – making them the first dance company to present a feature film. The show is part of 14-18 NOW, a UK-wide cultural programme that marks 100 years since the end of World War I. *1 Graces Alley, E1 8JB. T: 020-7702 2789. www.wiltons.org.uk*



BALLETBOYZ COURTESY OF BALLETBOYZ

'BELIEVE THE HYPE'

NEW YORK POST



ROALD DAHL'S

Matilda

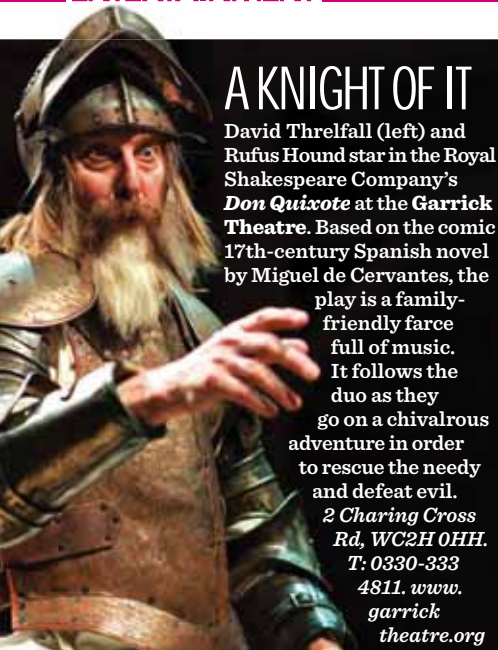
THE MUSICAL

#MatildaPose

MatildaTheMusical.com
CAMBRIDGE THEATRE, London, WC2H 9HU



Supported using public funding by
**ARTS COUNCIL
ENGLAND**



A KNIGHT OF IT

David Threlfall (left) and Rufus Hound star in the Royal Shakespeare Company's **Don Quixote** at the **Garrick Theatre**. Based on the comic 17th-century Spanish novel by Miguel de Cervantes, the play is a family-friendly farce full of music. It follows the duo as they go on a chivalrous adventure in order to rescue the needy and defeat evil. 2 Charing Cross Rd, WC2H 0HH. T: 0330-333 4811. www.garricktheatre.org

THRILLER LIVE

FAMILY Songs and dance celebrate Michael Jackson's career. Check for times and prices. *Lyric*, 29 Shaftesbury Ave, W1D 7ES. T: 0844-482 9674. www.thrillerlive.com. Station: Piccadilly Circus. E7.

TINA: THE TINA TURNER MUSICAL

Musical based on the life of singer Tina Turner. Check for times. Tickets £10-£149.50. *Aldwych Theatre*, 9 Aldwych, WC2B 4DF. T: 0845-200 7981. www.tinathemusical.com. Station: Covent Garden/Holborn. D8.

WICKED

FAMILY The brilliant backstory of the witches of Oz. Check for times and prices. *Apollo Victoria*, 17 Wilton Rd, SW1V 1LG. T: 0844-871 3001. www.wickedthemusical.co.uk. Station: Victoria. F7.

PLAYS

ANTONY & CLEOPATRA

To 19 Jan: Ralph Fiennes and Sophie Okonedo star in Shakespeare's tragedy. Check for times and prices. *National Theatre, South Bank*, SE1 9PX. T: 020-7452 3000. www.nationaltheatre.org.uk. Station: Waterloo. E8.

DON'T MISS MOTOWN!
FINAL WEST END PERFORMANCES SPRING 2019



OK! MAGAZINE



MOTOWN™

THE MUSICAL

THE SONGS. THE SOUND. THE STORY.

020 7379 5399 | MotownTheMusical.co.uk | Shaftesbury Theatre

Motown™ is a trademark of UMG Recordings, Inc. registered in the U.S. and other countries, and is used under license.

THE PHANTOM OF THE OPERA



THE BRILLIANT ORIGINAL

AT HER MAJESTY'S THEATRE
020 7087 7762 | thephantomoftheopera.com

THE COMEDY ABOUT A BANK ROBBERY

A hilarious play about six incompetent crooks who are desperate to get hold of a diamond. Check for times. Tickets £10-£73.75. *Criterion Theatre, 218-223 Piccadilly, W1V 9LB. T: 0844-815 6131. www.thecomedyaboutabankrobbery.com. Station: Piccadilly Circus. E7.*

THE CURIOUS INCIDENT OF THE DOG IN THE NIGHT-TIME

NEW From 29 Nov: Award-winning play about an autistic boy who searches for a missing dog. Mon-Sat 7.30pm; Thur & Sat 2.30pm. Check for prices. *Piccadilly Theatre, 16 Denman St, W1D 7DY. T: 0844-871 7630. www.piccadillytheatre.org. Station: Piccadilly Circus. E7.*

FAULTY TOWERS: THE DINING EXPERIENCE

Seventies-style dining and interactive comedy combine in this theatrical experience based on the cult TV sitcom. Please check for times. Tickets £67.50-£74.50. *Radisson Blu Edwardian, 9-13 Bloomsbury St, WC1B 3QD. T: 0845-154 4145. www.faultytowers-uk.com. Station: Tottenham Court Road. D7.*

HARRY POTTER AND THE CURSED CHILD

FAMILY This adaptation of JK Rowling's new story sees father-of-three Harry working for the Ministry of Magic. Most tickets are sold out; please check for returns and times. *Palace Theatre, 113 Shaftesbury Ave, W1D 5AY. T: 0300-333 4813. www.harrypottertheplay.com. Station: Leicester Square. D7.*

INHERITANCE

To 5 Jan: A generation after the peak of the AIDS crisis, this play explores what it is like to be a young gay man in New York. Suitable for over-14s; under-16s must be sat next to their accompanying adult. Please check for times and prices. *Noël Coward Theatre, St Martin's Lane, WC2N 4AU. T: 0844-482 5140. www.delfontmackintosh.co.uk. Station: Leicester Square. E8.*

THE MOUSETRAP

A murderer strikes at a party in Agatha Christie's long-running whodunnit. Please check for times and prices. *St Martin's Theatre, West St, WC2H 9NZ. T: 0844-499 1515. www.the-mousetrap.co.uk. Station: Leicester Square. D7.*

THE WEST END'S LONGEST-RUNNING SHOWS

THE PHANTOM OF THE OPERA

Her Majesty's Theatre

Andrew Lloyd Webber's dramatic musical about tragedy, terror and love opened in London in 1986. The story is set in Paris, where a masked figure spreads horror across the Opera House. With a score that is famous across the world, *Phantom* has made more money than any other musical. www.reallyusefultheatres.co.uk

THE LION KING

Lyceum Theatre

No introduction is necessary for Disney's long-running West End musical, which came to London

from Broadway in 1999. To bring the animals of Africa's Serengeti Plain to the stage, the show skilfully uses puppets, masks, stilts and elaborate costumes. www.thelionking.co.uk

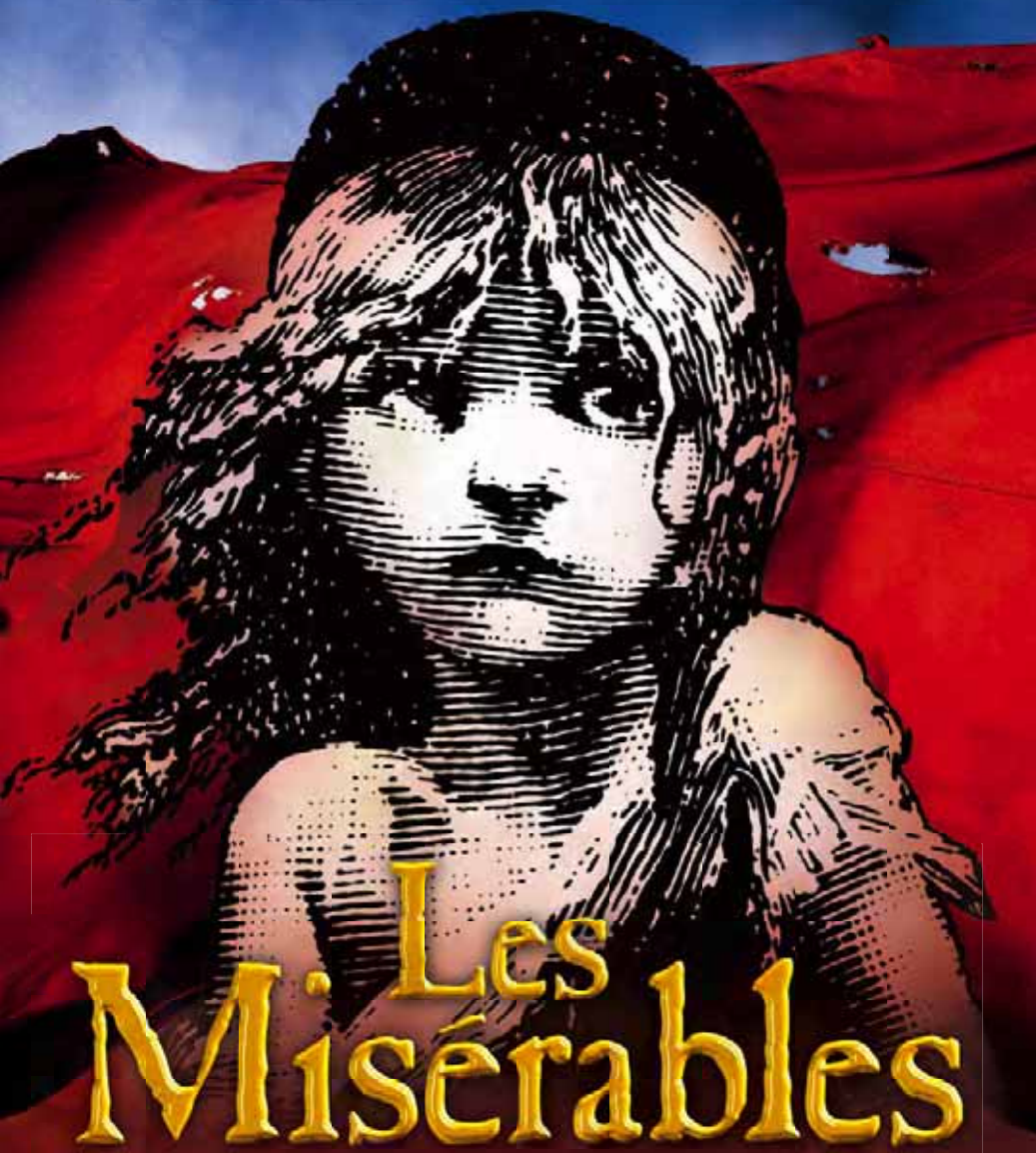
LES MISÉRABLES

Queen's Theatre

This epic musical about the French Revolution opened at the Barbican in 1985, when the press reviews weren't very positive. But theatre super-producer Cameron Mackintosh quickly turned it into a West End sensation. The London production of *Les Misérables* is the world's longest-running musical. www.queentheatre.co.uk



THE MUSICAL PHENOMENON



lesmis.com | 0844 482 5151

Calls cost 7p per minute plus your phone company's access charge

QUEEN'S THEATRE

TM © 1986 CMOL

ONLY FOOLS: THE (CUSHTY) DINING EXPERIENCE

2-30 Nov: This immersive show is a tribute to the much-loved *Only Fools and Horses* sitcom. All tickets include a three-course meal. Check for times and prices. *Radisson Blu Edwardian Grafton*, 30 Tottenham Court Rd, W1T 5AY. T: 0845-1544 145. www.interactivetheatre.com. Station: Tottenham Court Road. D7.

THE PLAY THAT GOES WRONG

FAMILY Slapstick comedy about a drama society staging a murder mystery. Tue-Sat 7.30pm; Sat 2.30pm; Sun 3pm & 7pm. Tickets £22-£72. *Duchess Theatre*, 3-5 Catherine St, WC2B 5LA. T: 0844-482 9672. www.theplaythatgoeswrong.com. Station: Covent Garden. D8.

TRUE WEST

NEW From 23 Nov: Kit Harington and Johnny Flynn star as warring brothers in Sam Shepard's funny modern classic. Mon-Sat 7pm; Thur & Sat 3pm. Please check for prices. *Vaudeville Theatre*, 404 Strand, WC2R 0NH. T: 0330-333 4814. www.vaudeville-theatre.co.uk. Station: Charing Cross/Covent Garden. E8.

WAR HORSE

NEW From 8 Nov: *War Horse* returns to mark the armistice centenary. Check for times and prices. *National Theatre*, South Bank, SE1 9PX. T: 020-7452 3000. www.nationaltheatre.org.uk. Station: Waterloo. E8.

WITNESS FOR THE PROSECUTION

Gripping courtroom drama. Check for times and prices. *County Hall*, Belvedere Rd, South Bank, SE1 7PB. T: 0844-815 7141. www.witnesscountyhall.com. Station: Waterloo/Westminster. F8.

THE WOMAN IN BLACK

A spooky tale about a lawyer who visits a remote house. Tue-Sat 8pm; Tue & Thur 3pm; Sat 4pm. Tickets £21.50-£52. *Fortune Theatre*, Russell St, WC2B 5HH. T: 0844-871 7626. www.thewomaninblack.com. Station: Covent Garden. D8.

FESTIVALS & EVENTS

CHRISTMAS IN LEICESTER SQUARE

NEW From 9 Nov: Enjoy a Christmas market and Santa's grotto. Free. WC2H 7JY. T: 020-7492 9942. www.christmasinleicestersquare.com. Station: Leicester Square. E7.

A TRULY ENTERTAINING CLASSIC

THE SUNDAY TIMES

THE AGATHA CHRISTIE'S
MOUSETRAP

SUSPECT EVERYONE

ST MARTIN'S THEATRE

www.the-mousetrap.co.uk | 020 7836 1443



'A RAW MUSICAL
TRIUMPH.'

This show has heart,
soul and more than
a bit of rock'n'roll.'

THE TIMES



DAILY MAIL



DAILY TELEGRAPH



THE SUN



DAILY EXPRESS



METRO

Tina

THE TINA TURNER MUSICAL

inspired by the life and music of TINA TURNER

BOOKING EXTENDED UNTIL FEBRUARY 2019

NALDWYCH THEATRE

ALDWYCH THEATRE, 1-11 ALDWYCH STREET, LONDON, EC1A 3HL

TinaTheMusical.com

THEATRELAND MAP



London's major theatre and music venues can be located on the map above using the grid reference in the key below.

Visit London has a secure online booking service for all major current and forthcoming theatre productions.

To book tickets go to www.visitlondon.com

Key to Theatres

1 Adelphi	B2	13 Duchess	A/B3
2 Ambassadors	A2	14 Duke of York's	B2
3 Aldwych	A3	15 Fortune	A2/3
4 Apollo Theatre	B1	16 Garrick	B2
5 Apollo Victoria	F	17 Gielgud	A1
6 Arts	B2	18 Harold Pinter	B1
7 Barbican Centre	G	19 Her Majesty's	B1
8 Cambridge	A2	20 King's Head Theatre ..	E
9 Charing Cross Theatre ..	B2	21 Leicester Square	
10 Criterion	B2	22 Little Angel Theatre ..	E
11 Dominion	A1	23 London Palladium	A1
12 Donmar Warehouse	A2		

24 Lyceum	B3	40 St Martin's	A2
25 Lyric	B1	41 Savoy	B2
26 Menier Chocolate		42 Shaftesbury	A2
27 National Theatre	C3	43 Shakespeare's Globe ..	D
28 Gillian Lynne	A2	44 Vaudeville	B3
29 Noël Coward	B2	45 Theatre Royal	
30 Novello	A3	46 Theatre Royal	
31 Old Red Lion	E	47 Trafalgar Studios	C2
32 Old Vic	C4	48 Vaudeville	B2
33 Palace	A1	49 Victoria Palace	F
34 Phoenix	A1	50 Waterloo	
35 Piccadilly	B1	51 East Theatre	C4
36 Playhouse	C2	52 Wyndham's	B2
37 Prince Edward	A1	53 Young Vic	C4
38 Prince of Wales	B1		
39 Queen's	B1		

Key to Dance, Music and Multi-arts Venues

53 Barbican Hall	G	58 St James's Piccadilly	
54 London Coliseum	B2	59 church	B1
55 Peacock	A3	59 St Martin-in-the-Fields	
56 Ronnie Scott's	A1	60 church	B2
57 Royal Opera		60 Sadler's Wells	E
58 House	A2	61 Southbank Centre	C3

OPERA

ROYAL OPERA HOUSE

NEW From 15 Nov: *Simon Boccanegra*. Verdi's tragic masterpiece. Please check for times and prices. *Bow St, WC2E 9DD*. T: 020-7304 4000. www.roh.org.uk. Station: Covent Garden. D8.

CONCERTS: POP, JAZZ & WORLD

THE O2

Live music venue. **4 Nov:** Childish Gambino. **21-22 Nov:** Florence + The Machine. *Peninsula Square, SE10 0AX*. T: 0844-856 0202. www.theo2.co.uk. Station: North Greenwich. Map inset.

ROYAL ALBERT HALL

4 Nov: Michael Bolton. **16-18 Nov:** *Star Wars: A New Hope* in concert (p. 60). **27 Nov:** Billy Ocean. Check for times and prices. *Kensington Gore, SW7 2AP*. T: 020-7589 8212. www.royalalberthall.com. Station: South Kensington. F4.

CONCERTS: CLASSICAL

ROYAL FESTIVAL HALL

20 Nov: *Requiem*. Verdi's masterpiece. 7.30pm. Tickets £10-£60. *Royal Festival Hall, Southbank Centre, Belvedere Rd, SE1 8XX*. T: 020-3879 9555. www.southbankcentre.co.uk. Station: Waterloo. E8.

DANCE

ROYAL OPERA HOUSE

1-17 Nov: *La Bayadere*. Natalia Makarova's production of this classic ballet. Check for times and prices. *Bow St, WC2E 9DD*. T: 020-7304 4000. www.roh.org.uk. Station: Covent Garden. D8.

SADLER'S WELLS

1-3 Nov: Birmingham Royal Ballet. Please check for times and prices. *Rosebery Ave, EC1R 4TN*. T: 020-7863 8000. www.sadlerswells.com. Station: Angel. Off map.

CHILDREN & FAMILIES

A CHRISTMAS CAROL

NEW From 27 Nov: Matthew Warchus' hit production of Charles Dickens' story. Suitable for over eights. Check for times and prices. *The Old Vic, The Cut, SE1 8NB*. T: 0844-871 7628. www.oldvictheatre.com. Station: Waterloo. F9.

THE SNOWMAN

NEW From 22 Nov: This well-loved festive tale by Raymond Briggs is about a young boy who becomes friends with a snowman. Please check for times. Tickets from £15. *The Peacock, Portugal St, WC2A 2HT*. T: 020-7863 8222. www.sadlerswells.com. Station: Holborn. D8.

IN THE HEART OF LEICESTER SQUARE

OPEN 7 DAYS A WEEK



OFFICIAL
LONDON
THEATRE
.com

TKTS

LAST MINUTE
& DISCOUNT
THEATRE TICKETS



TIME FOR TWICKENHAM

GAME, SET AND MATCH

Novak Djokovic, Roger Federer (below) and Rafael Nadal have confirmed they will be competing in the **Nitto ATP Finals** at The O2 (11-18 Nov). This prestigious tournament sees the globe's top eight men take part in the world's largest indoor tennis event. www.atpworldtour.com



THE BEAUTIFUL GAME

There's a chance for the England team to get revenge over Croatia for their 2-1 defeat in the FIFA World Cup semi-final this summer, when the teams face each other in the first **UEFA Nations League**, a biennial international contest, at Wembley Stadium (18 Nov; p. 73).

This month's **Autumn Internationals** sees the Three Lions competing at **Twickenham Stadium**, one of the world's largest sports arenas (from 3 Nov; p. 73). It plays host to four England matches, promising some tough opposition against South Africa (3 Nov), New Zealand (10 Nov), Japan (17 Nov) and Australia (24 Nov).

England's rugby coach Eddie Jones had enjoyed a successful couple of years since he led the England team from November 2015, including two successive Six Nations trophies. But the wheels began to fall off this year when England recorded just three wins out of nine games. These included some sobering defeats in the 2018 Six Nations, which saw them end up in the bottom half of the table, with losses against Scotland and South Africa.

These test matches, held in cities including Dublin, Chicago and Tokyo, bring

European teams together with tough southern hemisphere nations, giving everyone a vital chance to test out their squads in preparation for the 2019 Rugby World Cup in Japan.

This is a crucial year for England – and especially for Jones to prove his worth.

If you're lucky enough to be heading to the game against Australia, there's a treat in store. Immediately following that match, England Women take on Ireland Women, at 5.40pm, in the final of their three-test series – and entry is free to see the Red Roses. It's a fitting end to their series, and a move that indicates the respect women's rugby now gets.

'They're an international team on the rise, evidenced by their performance in the semi-final of last year's Women's Rugby World Cup,' says head coach Simon Middleton.

– Emma Levine
www.autumn-internationals.co.uk

To dial the UK, remove the first 0 and add 44. Map: refers to the grid coordinates on our Central London Map. For more sports events and information, see www.visitlondon.com/events

WATCH

BASKETBALL

23 Nov: London Lions vs Newcastle Eagles. *Copper Box Arena, Queen Elizabeth Olympic Park, E20 3AB. T: 020-3288 1800. www.londonlionsbasketball.co.uk. Station: Stratford. Off map.*

FOOTBALL

UEFA Nations League. **15 Nov:** England vs USA. **18 Nov:** England vs Croatia (p. 72). *Wembley Stadium, see 'Wembley Stadium Tour' for address. T: 0844-847 2010. www.wembleystadium.com.*

Premier League fixtures (subject to change):

3 Nov: Arsenal vs Liverpool. **11 Nov:** Arsenal vs Wolverhampton Wanderers. *Emirates Stadium, see 'Arsenal Stadium Tour' for address.*

4 Nov: Chelsea vs Crystal Palace. **11 Nov:** Chelsea vs Everton. *Stamford Bridge, see 'Chelsea FC Stadium Tour' for address.*

24 Nov: Tottenham Hotspur vs Chelsea. *Wembley Stadium, see 'The Wembley Stadium Tour' for temporary address. T: 0344-844 0102. www.tottenhamhotspur.com.*

3 Nov: West Ham United vs Burnley. **24 Nov:** West Ham United vs Manchester City. *London Stadium, Queen Elizabeth Olympic Park, E20 2ST. T: 020-8548 2748. www.whufc.com.*

NETBALL

30 Nov: Netball Series: England vs Uganda. *See 'Basketball' for address. T: 020-8221 4900. www.englandnetball.co.uk. Station: Stratford. Off map.*

RUGBY UNION

Autumn Internationals (p. 72). **3 Nov:** England vs South Africa. **10 Nov:** England vs New Zealand. **17 Nov:** England vs Japan. **24 Nov:** England vs Australia. *Twickenham Stadium, Whitton Rd, Twickenham, TW2 7BA. T: 020-8892 8877. www.englandrugby.com. Station: Twickenham. Off map.*

TOURS & MUSEUMS

ARSENAL STADIUM TOUR & MUSEUM

Self-guided audio tours include the changing rooms, players' tunnel and the museum. The Legends Tour is led by former Arsenal players. Please check for times. Adult £23; child £15.

Museum only £10; child £7. *Emirates Stadium, 75 Drayton Park, N5 1BU. T: 020-7619 5000. www.arsenal.com. Station: Holloway Road/ Arsenal/Finsbury Park. Off map.*

CHELSEA FC STADIUM TOUR & MUSEUM

A guided one-hour tour includes the dressing room, players' tunnel and press room, as well as the museum. Legends Tours, led by former players, on selected dates. Please check for times. Adult £24; child £15. *Stamford Bridge, Fulham Rd, SW6 1HS. T: 0371-811 1955. www.chelseafc.com. Station: Fulham Broadway. Off map.*

LORD'S TOUR & MCC MUSEUM

Guided tour of the home of cricket includes the Pavilion, Long Room and Honours Board, plus the England team's dressing room and the MCC Museum with the Ashes urn. Check for dates and times. Booking essential. Adult £24; child £15. *St John's Wood Rd, NW8 8QN. T: 020-7616 8595. www.lords.org. Station: St John's Wood. C4.*

KIA OVAL TOUR

Tour the famous ground, home of Surrey County Cricket Club since 1845 and England matches. See the architecture and famous sporting faces. Please check for times. Adult £20; child £10.

Kennington, SE11 5SS. T: 020-3946 0100. www.kiaoval.com. Station: Oval. Off map.

TWICKENHAM WORLD RUGBY MUSEUM & STADIUM TOUR

The museum has 38,000 exhibits, while tours include the England dressing room. Check for times and days. Adult £25; child £15. *Twickenham Stadium, see 'Rugby Union' for address. www.worldrugbymuseum.com.*

THE WEMBLEY STADIUM TOUR

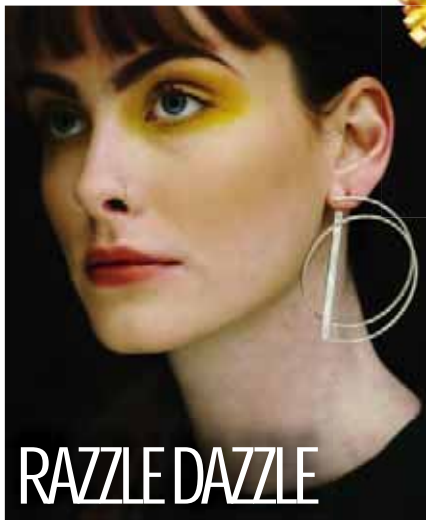
Go behind the scenes to relive sporting history at the UK's largest sports and music venue. Regular tours daily 10am-4pm; check for closures. Adult £19; child £12. *Olympic Way, HA9 0WS. T: 0800-169 9933. www.wembleystadium.com. Station: Wembley Park. Off map.*

WIMBLEDON LAWN TENNIS MUSEUM & TOUR

See the 1887 men's singles trophy and tour Centre Court. Daily 10am-5pm. Adult £25; child £15. *All England Lawn Tennis and Croquet Club, Church Rd, SW19 5AE. T: 020-8946 6131. www.wimbledon.com. Station: Southfields. Off map.*



SHOPPING



RAZZLE DAZZLE



Jewellery at Dazzle

COUNTRY FILES

*What does Britain smell like? **Jo Malone London** seems to have the answer. Its **Scents of Britain** has launched exclusively in its flagship store. Colognes include Tudor Rose and Amber, and Rain and Angelica. 101 Regent St, W1B 4EZ*



WINTER WONDERLAND

*Christmas is just around the corner, so make your way to the **Country Living Christmas Fair** (11-17 Nov), where you can pick up artisan gifts and decorations, listen to carol singers, watch cooking demos and enjoy food and drink. www.countrylivingfair.com*

The Tower of London may be home to the Crown Jewels, but OXO Tower has **Dazzle** (from 11 Nov), an exhibition showcasing contemporary jewellery. OXO Tower is one of London's great landmarks: located on the South Bank, it is also home to a bar and brasserie that offer amazing views of the capital. This month, **Gallery@Oxo** is home to the exhibition-meets-shopping experience, which is now in its 37th year.

More than 4,000 handmade pieces are brought together and come in a range of styles and materials, from pearls to plastic. The exhibition's co-founder Tony Gordon says: 'From inception, Dazzle has been about showcasing the new, the exciting, the trailblazing. This year offers particularly rich pickings.'

Recent graduates, such as Allie Anderson and Abbie

Gaiger, will display their work alongside pieces by established designers.

Anderson's collection is inspired by and created in Glasgow, and the architecture of the city is reflected in her designs. Gaiger has an unusual muse – mathematics. The patterns found in maths, from geometry to symmetry, help to create her laser-cut pieces.

The event started in 1981 in Manchester, when Gordon and co-founder Christine Bola were selling jewellery in the Royal Exchange and had to make £1,000 – they made £10,000 on the opening night.

It's not just jewellery: in the Dazzle Extra section you'll find accessories, including scarves by Green Thomas and Susan O'Byrne's ceramics. So go on, add some sparkle to your trip. **OXO Tower Wharf, Barge House St, SE1 9PH. T: 020-7021 1600. www.dazzle-exhibitions.co.uk**

JEWELLERY IMAGES COURTESY OF DAZZLE
JO MALONE LONDON COURTESY OF JO MALONE LONDON

TRAVEL FOR
DISCOVERIES

FIND YOUR
GREAT
BRITAIN



To dial the UK, remove the first 0 and add 44. Map: refers to the grid coordinates on our Central London Map. Normal opening hours are approximately 10am-6pm (Sun 11am-5pm), although some stores open until late on Thur

MAJOR STORES

DEBENHAMS

Fashion and homeware. 334-348 Oxford St, W1C 1JG (and branches). T: 0844-561 6161. www.debenhams.com. Station: Oxford Circus. B4.

FORTNUM & MASON

Established in 1707, this historic store is famed for its food hall, hampers and china. Don't miss the Diamond Jubilee Tea Salon. 181 Piccadilly, W1A 1ER. T: 0845-300 1707. www.fortnumandmason.com. Station: Green Park. E7.

HARRODS

One of the world's most famous and iconic stores includes top fashion labels and jewellery, plus many bars, restaurants and a great food hall. 87-135 Brompton Rd, SW1X 7XL. T: 020-7730 1234. www.harrods.com. Station: Knightsbridge. F5.

JOHN LEWIS

Established more than 150 years ago, this British institution sells everything from hats to homeware across seven floors. 300 Oxford St, W1A 1EX (and branches). T: 020-7629 7711. www.johnlewis.com. Station: Oxford Circus. D6.

LIBERTY

Behind a mock-Tudor exterior, this respected store is famed for its haberdashery and fabrics. It has a chocolate shop, too. Great Marlborough St, W1B 5AH. T: 020-7734 1234. www.libertylondon.com. Station: Oxford Circus. B5.

MARKS & SPENCER

Browse food, furniture, clothing and cosmetics at this trusted national institution. 458 Oxford St, W1C 1AP (and branches). T: 020-7935 7954. www.marksandspencer.com. Station: Marble Arch. B4.

SELFRIDGES

This famous department store is great for fashion, beauty and food, and is home to the huge Denim Studios, which stocks numerous brands. 400 Oxford St, W1A 1AB. T: 0800-123 400. www.selfridges.com. Station: Bond Street. D6.

MALLS & FACTORY OUTLETS

BICESTER VILLAGE

A shopping haven in Oxfordshire's countryside, where more than 160 boutiques showcase fashion brands, with prices that are reduced all year round. Please check for times. Bicester, Oxfordshire, OX26 6WD. T: 01869-323 200.

www.bicestervillage.com. Station: Marylebone to Bicester Village. Bus: Shopping Express Village coach from London hotels. Off map.

WESTFIELD LONDON

This huge mall has luxury and high-street shops, plus activities, cafés and restaurants. It has recently undergone a major refurbishment, making it Europe's largest shopping centre. Ariel Way, W12 7GF (and Stratford mall). T: 020-3371 2300. www.uk.westfield.com. Station: Shepherd's Bush. Map inset.

FASHION

ALEXANDER MCQUEEN

Tailored menswear and womenswear from the fashion-forward label. 9 Savile Row, W1S 3PF. T: 020-7494 8840. www.alexandermcqueen.com. Station: Oxford Circus/Piccadilly Circus. C5.



If you haven't thought about your Christmas shopping yet, **Black Friday** (23 Nov) is an excellent time to start. This massive shopping event, which always takes place on the day after Thanksgiving, marks the moment when retailers launch their pre-Christmas sales. Oxford Street is the place to experience the Black Friday madness at its most exciting. Shops open earlier than usual – some at 6am that day – to welcome thousands of customers hoping to bag a bargain, on everything from clothing and electricals to toys and homeware.

SHOPPING

PRIMARK

At this bargain-hunter's paradise, you'll find affordable clothing and homeware. 499-517 Oxford St, W1K 7DA (and branches). T: 020-7495 0420. www.primark.com. Station: Marble Arch. B4.

TOPSHOP

This flagship shop is brimming with stylish catwalk-inspired pieces at affordable prices. There is a nail and blow-dry bar, too. 214 Oxford St, W1W 8LG (and branches). T: 0844-848 7487. www.topshop.com. Station: Oxford Circus. B5.

SPECIALIST STORES

BUCKINGHAM PALACE SHOP

Pick up royal souvenirs, from tea sets and tiaras to corgi slippers and charms. 7 Buckingham Palace Rd, SW1W 0PP. T: 020-7839 1377. www.royalcollectionshop.co.uk. Station: Victoria. F6.

HAMLEYS

One of the world's biggest toy shops, with seven floors selling everything that a child could dream of. It also has entertainers in costume. 188-196 Regent St, W1B 5BT. T: 0371-704 1977. www.hamleys.com. Station: Oxford Circus. D7.

IT'S ONLY ROCK 'N' ROLL

Music merchandise shop selling rock memorabilia, T-shirts, autographs, photos and more. 230 Baker St, NW1 5RT. T: 020-7224 0277. www.itsonlyrocknroll.london.co.uk. Station: Baker Street. A3.

JAPAN CENTRE

Seek out this subterranean shop for sushi, hot dishes, Japanese ingredients and a range of ceramics. 35b Pantons St, SW1Y 4EA. T: 020-3405 1246. www.japancentre.com. Station: Leicester Square. E7.

LEGO STORE

Browse sets and marvel at LEGO creations, from a 6.53m-tall Big Ben to an Underground carriage, in this huge store. 3 Swiss Court, W1D 6AP. T: 020-7839 3480. www.lego.com. Station: Leicester Square. E7.

LONDON BEATLES STORE

London's only Beatles shop stocks original memorabilia, from T-shirts to mugs. 231/233 Baker St, NW1 6XE. T: 020-7935 4464. www.beatlesstorelondon.co.uk. Station: Baker Street. A3.



LITTLE SHOP OF MUSIC

As part of its £50.7 million refurbishment, the **Royal Opera House** is opening a new shop. The iconic music venue in Covent Garden has been transformed by the Stanton Williams architect firm with the intention of making the site more accessible. The open-plan shop, which you can visit without having a ticket to a performance, has collaborated with brands including perfumer Miller Harris, The Cambridge Satchel Company (above) and jewellery designer Hannah Davis, who set up the Wolf & Moon label. Prints, posters and recordings of shows are also available. Bow St, WC2E 9DD. T: 020-3772 6391. www.shop.roh.org.uk

LONDON GLASSBLOWING STUDIO

Watch glass objects being created as you browse pieces for sale. 62-66 Bermondsey St, SE1 3UD. T: 020-7403 2800. www.londonglassblowing.co.uk. Station: London Bridge. D8.

PANDORA

Jewellery and gifts, including Pandora's charms for bracelets and necklaces. 257-259 Oxford St, W1C 2DD (and branches). T: 020-7407 2007. www.pandora.net. Station: Oxford Circus. B4.

TWININGS

Find more than 100 varieties of teas and infusions at one of the oldest shops in London. Open since 1706, it's also home to a small museum at the back of the store. 216 Strand, WC2R 1AP. T: 020-7353 3511. www.twinings.co.uk. Station: Temple. D9.

WE BUILT THIS CITY

This West End souvenir shop puts a quirky spin on classic gifts. The stuffed model pigeons and illustrated cityscapes, which are by local artists, are particularly popular. 56 Carnaby St, W1F 9QF. T: 020-3642 9650. www.webuilt-thiscity.com. Station: Oxford Circus. B5.

London Beatles Store

**OPEN
DAILY
10am -
6:30pm**

**231/233 BAKER ST
LONDON NW1 6XE
TEL: 020 7935 4464**

www.beatlesstorelondon.co.uk
sgtpepper@beatlesstorelondon.co.uk

We stock the world's biggest range of BEATLES merchandise including T-shirts & clothing, mugs, pins, bags, homeware, wallets, posters, keyrings, accessories, collectibles, records, photographs, jigsaws and games and autographs.

You can also find out about Beatles sites.



IT'S ONLY ROCK 'N' ROLL

LONDON'S
ONLY
ROCK 'N' ROLL
MEMORABILIA
STORE

230 BAKER ST LONDON NW1 5RT
www.itsonlyrocknrolllondon.co.uk
TEL: 020 7224 0277 OPEN DAILY 10AM - 6:30PM

If you love The Rolling Stones, The Who, Queen, David Bowie, Pink Floyd, AC/DC, Led Zeppelin, Elvis, Jimi Hendrix, Metallica, The Clash, Sex Pistols, Iron Maiden, The Doors, Oasis, Nirvana etc. this is the place for you!



BUCKINGHAM PALACE *Shop*



Visit our shop at 7 Buckingham Palace Road, SW1W 0PP
or browse online at www.royalcollectionshop.co.uk



ROYAL
COLLECTION
TRUST

Save 10% Present this
advert in store

EATING OUT

THAT'S THE SPIRIT!

While you're busy shopping at the **Spirit of Christmas Fair** at Olympia London (to 4 Nov), make sure you visit the Food Hall for foodie-inspired presents. The fair also has a Great Taste Market stocking produce from the winners of the Great Taste awards. www.spiritofchristmasfair.co.uk

IN GOOD TASTE

The biannual foodie festival **Taste of London** takes over Tobacco Dock this month (15-18 Nov), with a fire pit, a produce market and talks and demonstrations by chefs including Angel Zapata Martin from the Spanish tapas bar, Barrafina. www.london.tastefestivals.com



GIVE THANKS

If you're American or have friends from the United States, celebrate **Thanksgiving** (22 Nov) with roast turkey, maple-buttered sweet potatoes, cornbread, mac and cheese and pumpkin brûlée or pecan pie at Riding House Café in Fitzrovia, Rail House Café in Victoria and Village East in Bermondsey.



Tell Your Friends



REVIEW

It's World Vegan Month, so why not try a new vegan restaurant? **Café Forty One's** head chef Clarisse Flon has a new vegan menu in La Suite West hotel on the edge of Hyde Park. She says: 'The vegan community here is incredible! Everyone is eager to try new options.'

Try mushroom and black bean porridge; a salad with edamame, peanuts and breaded shimeji mushrooms in a ginger dressing; a strawberry tart or a coconut and passion fruit pavlova. You could also opt for afternoon tea with rye bread filled with aubergine 'bacon', sweets and scones with vegan honey, loose-leaf tea or Italian coffee and non-alcoholic bubbly. Exotic fruit cocktails are extra (www.lasuitewest.com).

For a more laid-back vibe, drop into **Tell Your Friends**, a new vegan bar and kitchen in Fulham. Owner Lucy Watson from TV's *Made in Chelsea* says: 'I became vegan for ethical reasons as I don't agree with animal cruelty – the health benefits are just a plus.'

The Instagram-friendly interior has plants, neon signs and mirrors, and the ingredients are responsibly sourced. Try the cooked breakfast with vegan sausages and ackee 'scrambled eggs'. Got a sweet tooth? Then opt for chia pudding made with almond milk, granola, berries, the South American root maca and lucuma fruit – which resembles an avocado/mango hybrid, but tastes more like a caramelised sweet potato. Dishes can be taken away.

The drinks are as inventive as the food – try the charcoal lemonade, a cup of red velvet beetroot latte or a smoothie (www.tellyourfriendsldn.com).

Meanwhile, London's second branch of **by. Chloë** has opened next to Tower Bridge.

Like Tell Your Friends, it has neon signs and brims with light. Try a roast with Yorkshire pudding and rosemary gravy, made with vegan favourites such as tempeh and tofu. Whatever you do, save space for the cinnamon espresso cookies (www.eatbychloe.com). – Sarah Riches

AMERICAS

HAM HOLY BURGER

Dine on gourmet burgers at this joint in John Lewis. Daily L & D (check for times). £. 300 Oxford St, W1A 1EX. T: 020-7499 8296. www.hamholyyburger.co.uk. Station: Oxford Circus. B5.

HARD ROCK CAFE

London's original burger joint has a huge menu, with jumbo wings and smoked ribs. Daily L & D. ££. 150 Old Park Lane, W1K 1QZ. T: 020-7514 1700. www.hardrock.com. Station: Hyde Park Corner. E8.

OBLIX

Enjoy great views from The Shard at this New York-style rotisserie. Daily L & D. £££. 31 St Thomas St, SE1 9RY. T: 020-7268 6700. www.oblixrestaurant.com. Station: London Bridge. E10.

PLANET HOLLYWOOD

A film-inspired experience with a global menu, specialising in burgers. L & D (bar to 1am). ££. 57-60 Haymarket, SW1Y 4QX. T: 020-7287 1000. www.planethollywoodlondon.com. Station: Piccadilly Circus. E7.

BRITISH

AQUA SHARD

Head up to level 31 of landmark The Shard for British cuisine and great views. Daily B, L & D. £££. 31 St Thomas St, SE1 9RY. T: 020-3011 1256. www.aquashard.co.uk. Station: London Bridge. E10.

CAFÉ IN THE CRYPT

In this church's 18th-century brick vaults, you can enjoy food at reasonable prices. Mon-Sat B, L & D; Sun 11am-6pm. £. St Martin-in-the-Fields, corner of Trafalgar Square, WC2N 4JJ. T: 020-7766 1158. www.smitf.org. Station: Charing Cross. D7.

CHENESTON'S RESTAURANT

This intimate dining room with classic English decor specialises in fine British cuisine. Daily B, L & D. £££. The Milestone Hotel, 1 Kensington Court, W8 5DL. T: 020-7917 1000. www.milestonehotel.com. Station: High Street Kensington. Off map.

SEARCYS ST PANCRAS

This Art Deco-style restaurant in the Eurostar terminal serves British dishes. Daily B, L & D. ££-£££. Upper Concourse, St Pancras International, N1C 4QL. T: 020-7870 9900. www.searcys.co.uk. Station: King's Cross St Pancras. C8.

SERPENTINE BAR & KITCHEN

Terrace café next to Hyde Park's Serpentine lake. Daily 8am-7pm. £. Serpentine Rd, Hyde Park, W2 2UH. T: 020-7706 8114. www.serpentinebarandkitchen.com. Station: Hyde Park Corner. C3.

SOPHIE'S STEAKHOUSE & BAR

British steaks, burgers and sharing boards. Daily L & D. ££. 42-44 Great Windmill St, W1D 7NB (and branch). T: 020-7352 0088. www.sophiessteakhouse.co.uk. Station: Piccadilly Circus. E7.

FIRE AND FLAVOUR

The restaurateur and author Yotam Ottolenghi has teamed up with Grain Store's former head chef Neil Campbell to open **ROVI** in Fitzrovia. While the interior brims with light, the decor is kept simple, so all eyes are drawn to the open kitchen, red banquettes and central bar. ROVI's key principles are fermentation, cooking over fire and an emphasis on vegetables. Inventive dishes include corn ribs with apricot sauce and chipotle salt, and celeriac shawarma with fermented tomato. Allow room for ricotta doughnuts with gooseberries, or take away from the deli. 59 Wells St, W1A 3AE. T: 020-3963 8270. www.ottolenghi.co.uk/rovi



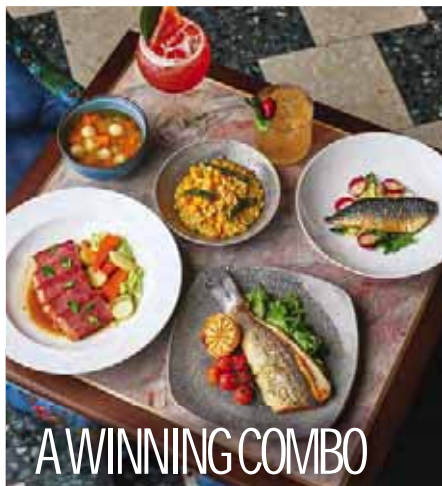
VIVI

This restaurant and bar serves seasonal dishes, afternoon tea and a pre-theatre menu. Glass walls make it great for people-watching. Daily B, L & D. ££. *Centre Point, 11 St Giles Square, WC2H 8AP. T: 020-8812 3200. www.vivirestaurant.co.uk. Station: Tottenham Court Road. D7.*

CHINESE

CHAI WU

Luxury Chinese dishes in Harrods. Daily L; Mon-Sat D (to 8pm). £££. *Harrods, 87-135 Brompton Rd, SW1X 7XL. T: 020-3819 8888. www.chaiwu.co.uk. Station: Knightsbridge. F5.*



Everyone's talking about **Tish**, a new kosher restaurant in Belsize Park, close to Keats House. And no wonder – head chef John Ellison previously cooked for Bob Bob Ricard and The Club at The Ivy. Sit on floral armchairs or teal banquettes as you watch chefs work in the open kitchen, which features low-hanging copper lights. Alternatively, nab a table on the patio, which has heaters, blankets and parasols. The dairy-free menu features challah French toast with pear compote; pomegranate salad or Hungarian bean soup. For something heavier, go for the chicken schnitzel or kneidlach (dumplings) soup or crispy duck leg, then share Bramley apple strudel. As is tradition in the Jewish community, Tish serves special Friday night and Saturday lunch Shabbat meals, which must be paid for in advance. *196 Haverstock Hill, NW3 2AG. T: 020-7431 3828. www.tish.london*

ROYAL CHINA BAKER STREET

This huge branch is known for its dim sum, which is served every lunchtime. Daily L & D. ££. *24-26 Baker St, W1U 3BZ (and branches). T: 020-7487 4688. www.rcguk.co.uk. Station: Baker Street. D6.*

FRENCH

BRASSERIE ZÉDEL

A huge Parisian-style brasserie serving great-value French cuisine, with a low-cost set menu. Daily L & D. £-££. *20 Sherwood St, W1F 7ED. T: 020-7734 4888. www.brasseriezedel.com. Station: Piccadilly Circus. E7.*

GASTROPUBS

BEAR & STAFF

Order classic comfort food such as soup, pies or Whitby scampi alongside cask ale at this central pub. Daily B, L & D. £-££. *10-12 Bear St, WC2H 7AX. T: 020-7321 0814. www.nicholsonspubs.co.uk. Station: Leicester Square. E7.*

THE EAGLE

One of London's first gastropubs offers dishes such as roast pork belly and grilled scallops. Mon-Sat L & D; Sun L. ££. *159 Farringdon Rd, EC1R 3AL. T: 020-7837 1353. www.theeaglefarringdon.co.uk. Station: Farringdon. B7.*

THE PORCUPINE

Dating back to 1725, this pub was once a hangout for freemasons. Now it serves real ale and has a dedicated pie menu. Mon-Sat B, L & D; Sun L & D. £-££. *48 Charing Cross Rd, WC2H 0BS. T: 020-7379 9855. www.nicholsonspubs.co.uk. Station: Leicester Square. E7/E8.*

THE THOMAS CUBITT

Classic dining room above a traditional bar, serving dishes such as poached trout with horseradish mash. Daily L & D. ££-£££. *44 Elizabeth St, SW1W 9PA. T: 020-7730 6060. www.thethomascubitt.co.uk. Station: Victoria. D4.*

THE WELLS

This bright and airy pub near Hampstead Heath serves British cuisine. Daily L & D. ££. *30 Well Walk, NW3 1BX. T: 020-7794 3785. www.thewells-hampstead.co.uk. Station: Hampstead. Off map.*

WHITE HORSE

This Soho pub features original stained-glass pub signs. Eat from the buffet, or opt for pies or steak. Mon-Sat B, L & D; Sun L & D. £-££. *16 Newburgh St, W1F 7RY. T: 020-7494 9748. www.nicholsonspubs.co.uk. Station: Oxford Circus. D7.*



JAPAN CENTRE

JAPANESE FOOD HALL **EAT. DRINK. SHOP**

EXPLORE ALL THINGS JAPAN

SUSHI | MATCHA | SAKE | MISO | CERAMICS | JAPANESE GROCERIES

🚶 1 min from Piccadilly Circus

35b Panton Street SW1Y 4EA

www.japancentre.com/pantonst



share your snaps!

#japancentre

EATING OUT

WHITE SWAN

This traditional pub serves sharing dishes, fish and chips and grilled dishes. Save space for the salted caramel profiteroles. Mon-Sat B, L & D; Sun L & D. £-££. 14 New Row, WC2N 4LF. T: 020 3077 1129. www.nicholsonspubs.co.uk. Station: Leicester Square. E8.

THE WIGMORE

Enjoy unusual dishes from a menu created by Michel Roux Jr, in a refurbished bar with high ceilings and Art Deco features. Mon-Sat L & D. £££. 15 Langham Place, Regent St, W1B 3DE. T: 020-7965 0198. www.the-wigmore.co.uk. Station: Oxford Circus. D6.

INDIAN

AMAYA

Michelin-starred dishes full of exotic twists on Indian dishes, served from an open grill kitchen. Bite-sized portions arrive at different times and are designed for sharing. Daily L & D. £££. Halkin Arcade, 19 Motcomb St, SW1X 8JT. T: 020-7823 1166. www.amaya.biz. Station: Knightsbridge. F6.

CHUTNEY MARY

Enjoy a gourmet tour of seven Indian regions in this elegant restaurant. Daily L & D. ££. 73 St James's St, SW1A 1PH. T: 020-7629 6688. www.chutneymary.com. Station: Green Park. E7.

GAYLORD RESTAURANT

This long-established Indian restaurant serves award-winning Mughal dishes. Daily L & D. ££. 79-81 Mortimer St, W1W 7SJ. T: 020-7580 3615. www.gaylordlondon.com. Station: Oxford Circus. D7.

HAANDI

Cosy restaurant with an excellent range of North Indian dishes. Daily L & D. £. 7 Cheval Place, SW7 1EW. T: 020-7823 7373. www.haandirestaurants.com. Station: Knightsbridge. D3.

LITTLE INDIA

This informal restaurant near the Royal Albert Hall specialises in traditional Bengali cuisine. Daily L & D. ££. 32 Gloucester Rd, SW7 4RB. T: 020-7584 3476. www.littleindialondon.com. Station: Gloucester Road. F4.



If you just want something quick, cheap and tasty, then head to **Sambal Shiok** near the Emirates Stadium. This new Malaysian restaurant specialises in laksa, a spicy noodle soup with a prawn base. You'll have to queue and sit on wooden schoolchairs, but it's worth it. All bowls cost around £10 and come with rice or egg noodles in a hot broth – you choose between poached chicken; king prawns; fried tofu puffs, beansprouts and green beans or the vegan option of charred aubergine and sautéed potatoes. If that sounds too messy, opt for beef rendang or Malaysian fried chicken with peanut sauce instead. 171 Holloway Rd, N7 8LX. T: 020-7619 9888. www.sambalshiok.co.uk

MASALA ZONE

In this vibrant restaurant, enjoy tasty Indian street food, traditional thalis and regional curries. Daily L & D. ££. 48 Floral St, WC2E 9DA (and branches). T: 020-7379 0101. www.masala-zone.com. Station: Covent Garden. D6.

MINT LEAF

Contemporary Indian dishes are served in this stylish restaurant. Mon-Fri & Sun L; daily D. £££. Suffolk Place, Haymarket, SW1Y 4HX (and branch). T: 020-7930 9020. www.mintleaf-london.com. Station: Piccadilly Circus. E7.

VEERASWAMY

London's oldest Indian restaurant boasts decadent decor and a Michelin star, with tandoori and seafood dishes. Daily L & D. £££. 99 Regent St, W1B 4RS. T: 020-7734 1401. www.veeraswamy.com. Station: Piccadilly Circus. E7.

INTERNATIONAL

THE CAVENDISH

This elegant restaurant serves mains such as wild salmon. Daily L & D. ££-£££. 35 New Cavendish St, W1G 9TR. T: 020-7487 3030. www.35new-cavendish.co.uk. Station: Baker Street. D6.

THE TERRACE

Enjoy burgers and Italian dishes at this hotel restaurant. Daily B, L & D. ££. Amba Hotel Charing Cross, The Strand, WC2N 5HX. T: 0800-330 8397. www.amba-hotel.com. Station: Charing Cross. E8.

ITALIAN

ASK ITALIAN

This popular restaurant is conveniently located opposite Paddington Station. Natural light streams through its conservatory-style ceiling. Daily L & D. ££. 41-43 Spring St, W2 1JA (and branches). T: 020-8115 7091. www.askitalian.co.uk. Station: Paddington. D4.

POLPO

Simple restaurant serving small, sharing dishes including crab arancini and fritto misto. Daily L & D. ££. 41 Beak St, W1F 9SB (and branches). T: 020-7734 4479. www.polpo.co.uk. Station: Piccadilly Circus. D7.

VERDI ITALIAN KITCHEN

Enjoy Italian classics or afternoon tea in the classic Royal Albert Hall. Tue-Sun L & D. ££. Kensington Gore, SW7 2AP. T: 020-7070 4401. www.royalalberthall.com. Station: South Kensington. F4.



LONDON

CELEBRATING 25 SENSATIONAL YEARS



20% OFF

FOOD/SOFT DRINKS/MERCHANDISE

Not valid in conjunction with any other offer. Payment by cash or debit/credit card only. Discount applies to a la carte menu (excluding kids' menu). Valid daily until 30/12/18. Subject to availability. 1 voucher per table maximum 8 persons. Code LPLAN. Please show this advert to your server before ordering.

RESTAURANT OPEN 'TIL MIDNIGHT (11PM SUN)
BAR OPEN 'TIL 1AM (MIDNIGHT SUN)

TO BOOK PLEASE CALL
020 7287 1000
planethollywoodlondon.com

 **57-60 HAYMARKET**
LONDON SW1Y 4QX
TUBE: PICCADILLY CIRCUS OR LEICESTER SQ

JAPANESE

BENIHANA

Chefs prepare dishes at your table. Daily L & D. £££. 37 Sackville St, W1S 3EH (and branches). T: 020-7494 2525. www.benihana.co.uk. Station: Piccadilly Circus. E7.

SAKAGURA

The menu at this izakaya-style 'Japanese pub' is designed to be shared, so order drinks alongside nibbles and small plates. Daily L & D. ££. 8 Heddon St, W1B 4BS. T: 020-3405 7230. www.sakaguralondon.com. Station: Piccadilly Circus. E7.

TOKYO DINER

Intimate, informal and good-value venue offering sushi and sashimi, plus rice and noodle dishes. Tue-Sun L & D. £. 2 Newport Place, WC2H 7JJ. T: 020-7287 8777. www.tokyodiner.com. Station: Leicester Square. E7.

MEXICAN

CHIKUITO

This colourful venue serves a wide selection of popular Tex-Mex classics, including street food favourites and cocktails, plus a children's menu (£4.95). Daily B, L & D. ££. 20-21 Leicester Square, WC2H 7LE. T: 020-7321 6070. www.chikuito.co.uk. Station: Leicester Square. E7.

WAHACA

A popular chain of stylish cantinas, with the spirit of a Mexican market. The menu features a range of dishes including burritos, tacos and quesadillas. Daily L & D. £. 80 Wardour St, W1F 0TF (and branches). T: 020-7734 0195. www.wahaca.co.uk. Station: Piccadilly Circus. B5.

MIDDLE EASTERN & TURKISH

NOPI

Yotam Ottolenghi's Middle Eastern-inspired menu, with dishes to share, in a stylishly informal venue including communal tables. Mon-Sat B, L & D; Sun B & L. ££. 21-22 Warwick St, W1B 5NE. T: 020-7494 9584. www.nopi-restaurant.com. Station: Piccadilly Circus. E7.

YASMEEN

Authentic Lebanese and Moroccan cuisine with excellent mezze, wraps, charcoal-grilled meat and vegetarian dishes. Daily L & D. ££. 1 Blenheim Terrace, NW8 0EH. T: 020-7624 2921. www.yasmeenrestaurant.com. Station: St John's Wood. Off map.

RIVERSIDE

BATEAUX LONDON

See London's iconic sights on a river cruise, while dining on modern British cuisine. Daily L & D; Sun jazz with three-course L. £££. Embankment Pier, WC2N 6NU. T: 020-7695 1800. www.bateauxlondon.com. Station: Embankment. E8.

LONDON SHOWBOAT

Drift down the River Thames while enjoying a four-course dinner. Booking essential. Boarding Westminster Pier at 7.30pm. £££. Westminster Pier, SW1A 2JR. T: 020-7740 0400. www.citycruises.com. Station: Westminster. F8.

RS HISPANIOLA

Enjoy contemporary Mediterranean cuisine aboard this permanently docked restaurant ship. Daily L & D. ££. Victoria Embankment, WC2N 5DJ. T: 020-7839 3011. www.hispaniola.co.uk. Station: Embankment. E8.

SOUTH EAST ASIAN

CHI KITCHEN

Tasty pan-Asian cuisine in a popular department store. Daily B, L & D. ££. Debenhams, 334-348 Oxford St, W1C 1JG. T: 020-3841 6888. www.chikitchen.co.uk. Station: Oxford Circus. D6.

MANGO TREE

Fine dining with dishes from every region of Thailand. Daily L & D. ££-£££. 46 Grosvenor Place, SW1X 7EQ (and Harrods branch). T: 020-7823 1888. www.mangotree.org.uk. Station: Victoria. F6.

SPANISH

EL PIRATA

Choose authentic tapas including cured meats and fresh seafood. Mon-Fri L & D; Sat D. ££. 5-6 Down St, W1J 7AQ. T: 020-7491 3810. www.elpirata.co.uk. Station: Green Park. E6.

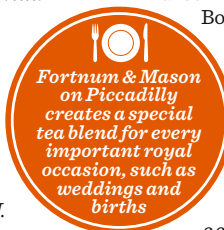
IBÉRICA

Traditional tapas given a modern twist. Daily L & D. ££. 5-6 Zig Zag Building, 68 Victoria St, SW1E 6SQ (and branches). T: 020-3327 0200. www.ibericarestaurants.com. Station: Victoria. F7.

VEGETARIAN

WOODLANDS

Excellent dishes, from dosas to thalis. Daily L & D. £££. 77 Marylebone Lane, W1U 2PS (and branches). T: 020-7486 3862. www.woodlandsrestaurant.co.uk. Station: Bond Street. D6.



ADVERTORIAL



EL PIRATA

For more than 20 years, El Pirata has hit the spot as London's top restaurant for traditional Spanish tapas. Located in the heart of Mayfair, it's the perfect place for a true taste of the Mediterranean. Informal, inexpensive and above all, authentic – the restaurant uses the finest Spanish produce, including jamón ibérico. Celebrity fans include Brian May and Johnny Depp, and food critics are unanimous in their praise of this 'Spanish gem'.

5-6 Down Street, Mayfair, W1 7AQ.
020 7491 3810/020 7409 1315.
www.elpirata.co.uk. Green Park. Map C5

AUTHENTIC THAI CUISINE

at the award winning

THAI POT

since 1992



Awarded:

*Authentic Thai Food –
Ministry of
Commerce, Thailand*

*4 stars –
Master Chef UK*



*Thai Select Award –
Department of Export
Promotion, Ministry of
Commerce, Thailand*

**1 Bedfordbury,
Covent Garden,
London WC2N 4BP**
behind ENO, Coliseum,
☉ Charing Cross Station
(Covent Garden exit)

020 7379 4580
www.thaipot.biz

4 stars restaurant at 2 stars price!

– food and service others talk about –



Preferred charity partner

HOSPITALITY
Action
Helping our people

andriuXphoto.com

The Society of the Golden Keys
of Great Britain (Les Clefs d'Or)
welcomes the world's
travel & tourism industry

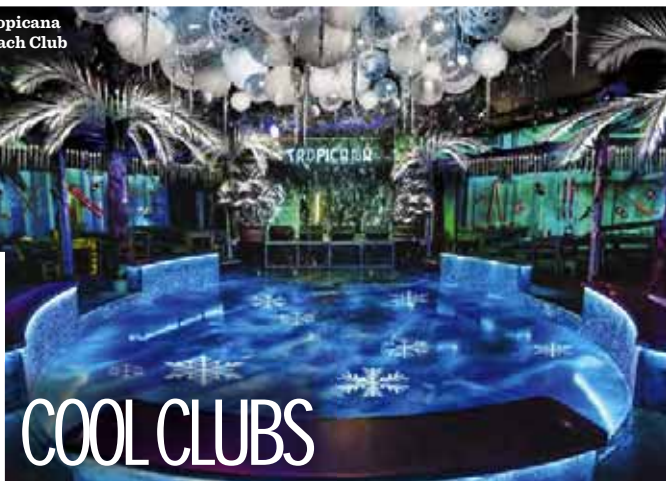
Please visit the concierge desk
during your stay - nobody knows
the UK like Les Clefs d'Or.



NIGHTLIFE



Tropicana Beach Club



COOL CLUBS



Archer Street

WINTER WARMER

The team behind Pergola Paddington has launched the 500-seat **Pergola Olympia** in Kensington, which features three restaurants, a bar and stunning views. Heaters, blankets and mulled wine will keep you warm. www.pergolalondon.com



Now that the nights are darker, summer may seem like a distant memory. But they say if you can't beat it, join it – so head down to **Tropicana Beach Club** in Covent Garden or **Archer Street** in Soho, as both summertime venues have morphed into a winter oasis.

As the name suggests, Tropicana Beach Club is usually a haven for summer fun, but now you can feel festive in The Big Freeze (from 8 Nov).

This winter, the 600-capacity club is decked out with icicles, giant snowball installations, skis and ice-skating boots. It has replaced its white sand with fake snow, beach huts for chilled huts and Pimm's and Negronis for Arctic-inspired cocktails, while its lifeguards will swap their usual red shorts for ice-blue trunks.

Order a frozen Daiquiri, rum ice lolly or a coconut ice cream served from a frozen trolley and watch dancers, listen to a DJ

or chill by a dancefloor that looks like a lagoon. Check for events, including sing-a-long *Frozen* brunch parties.

The club's restaurant offers delicious festive specials such as fried jerk turkey served with coconut rice, black beans and rainbow coleslaw (www.tropicanaclub.co.uk).

Meanwhile, the basement bar in **Archer Street** has a new vibe. Gone is the Antigua Beach Shack and in its place is Piste, an annual winter pop-up which resembles a cosy ski lodge.

With its chandeliers made from antlers, vintage wooden skis and roaring log fire, it looks like a Scandinavian mountain cabin or a Swiss chalet.

Cosy up in an intimate fur-lined booth and warm up over a spicy cocktail, as you listen to performers who jump on tables and belt out musical theatre numbers and pop hits (www.archerstreet.co.uk). These are the coolest parties in town. – Sarah Riches

PERGOLA OLYMPIA COURTESY OF PERGOLA OLYMPIA; THE BIG FREEZE IMAGES COURTESY OF TROPICANA BEACH CLUB; PISTE COURTESY OF ARCHER STREET

I TRAVEL FOR
— THE —
STORIES

FIND YOUR
GREAT
BRITAIN

Most bars are open 11am-11pm, most nightclubs are open 10pm-3am. The UK's legal drinking age is 18 years old. ID may be required. Map: refers to the grid coordinates on our Central London map

TRADITIONAL PUBS

MAGPIE & STUMP

Opposite the Old Bailey courts, this historic pub dates back to the 1500s. 18 Old Bailey, EC4M 7EP. T: 020-7248 5085. www.magpieandstump.com. Station: St Paul's. D10.

WAXY O'CONNOR'S

Huge Irish-themed pub with live music, a food menu and four bars. 14-16 Rupert St, W1D 6DD. T: 020-7287 0255. www.waxyconnors.co.uk. Station: Piccadilly Circus. E7.

YE OLDE CHESHIRE CHEESE

Expect snug 17th-century rooms and narrow passageways. 145 Fleet St, EC4A 2BU. T: 020-7353 6170. Station: Blackfriars. D9.

BARS & CLUBS

THE BACK ROOM

Next door to Hard Rock Cafe, this cocktail bar features iconic music items. 148b Old Park Lane, W1K 1QZ. T: 020-7514 1700. www.hardrock.com. Station: Green Park. E6.

CITY GARDEN BAR

This bar is at the top of the 'Walkie-Talkie' building and includes an open-air roof terrace. It has spectacular city views and free entry. Sky Garden, 20 Fenchurch St, EC3M 8AF. T: 0333-772 0020. www.skygarden.london. Station: Monument. E11.

GONG

You'll find this smart, intimate lounge and bar on the 52nd floor of The Shard. 31 St Thomas St, SE1 9QU. T: 020-7234 8208. www.shangri-la.com. Station: London Bridge. E10.

GORDON'S WINE BAR

Enjoy a large selection of wines in this brick-walled basement, established in 1890. 47 Villiers St, WC2N 6NE. T: 020-7930 1408. www.gordonswinebar.com. Station: Charing Cross. E8.

RILEY'S SPORTS BAR

Bar with screens and food. 380 Haymarket, SW1Y 4TE. T: 020-7930 0393. www.rileysportsbars.co.uk. Station: Piccadilly Circus. E3.

SEARCYS ST PANCRAS CHAMPAGNE BAR

Europe's longest Champagne bar is in a train station. St Pancras International, Euston Rd, N1C 4QL. T: 020-7870 9900. www.searcyschampagnebars.co.uk. Station: King's Cross St Pancras. C8.

LIVE ENTERTAINMENT

THE BLUES KITCHEN

Bourbon and burgers, plus bands and DJs. 111 Camden High St, NW1 7JN (and Shoreditch and Brixton branches). T: 020-7387 5277. www.theblueskitchen.com. Station: Camden Town. Off map.

RONNIE SCOTT'S

Famous Soho jazz club with a late bar. 47 Frith St, W1D 4HT. T: 020-7439 0747. www.ronniescotts.co.uk. Station: Tottenham Court Road. D7.

CASINOS

CASINO AT THE EMPIRE

Includes a poker room, games, a bar and an Asian restaurant. Open 24 hours daily. 5-6 Leicester Square, WC2 7NA. T: 020-3627 0818. www.thecasino.co.uk. Station: Leicester Square. E7.



BUSINESS IS BLOOMING

Phileas Fogg, the fictional character from *Around the World in 80 Days*, has inspired bars across London. The newly opened **Mr Fogg's House of Botanicals** in Fitzrovia (above) looks like a Victorian parlour with leather suitcases, butterflies, palms and birdcages. A spiral staircase leads to a lounge with floral armchairs and a menu inspired by the Victorian tradition of expressing hidden emotions by gifting particular flowers. **Mr Fogg's Society of Exploration** opened this autumn off the Strand. The bar has an Orient Express-inspired train carriage and a cocktail-making machine. At the push of a button, it triggers a chain reaction that creates a cocktail. www.mr-foggs.com

BEYOND LONDON



Why not escape the capital with a visit to some of Britain's best-loved towns and cities?

BRIGHT LIGHTS

Remember, remember the fifth of November, says Sarah Riches, as that's when the UK goes off with a bang

The UK is set to pop with colour on the fifth of November, as fireworks burst across the night sky – and it's all down to a man called Guy Fawkes. The British tradition of Bonfire Night dates back to 1605, when the Catholic conspirator attempted to blow up King James I and the Houses of Parliament with 36 barrels of gunpowder, which were hidden in the cellars. Fawkes was caught red-handed, but jumped to his death before he could be hanged, drawn and 'quartered,' or cut into pieces. His

failed plot has been celebrated across the country on the fifth of November ever since.

Traditionally, children create Guy Fawkes effigies – models stuffed with newspaper like a scarecrow – then collect coins for their efforts. In the past, they could be heard requesting 'A penny for the Guy?' The effigy is then hurled on top of a bonfire as fireworks light up the sky across the country and torchlit processions parade through the streets. Be part of history and catch a display during your visit.



IMAGE © ISTOCK



View of Lewes from the top of the castle

Lewes' Bonfire celebrations



Shire horses in the town



Anne of Cleves House Museum

LEWES

Lewes in East Sussex has one of the world's biggest Bonfire Night celebrations. The town's group of bonfire societies are fiercely proud of their displays, and a rivalry exists between them to see which can host the most impressive.

You can expect marching bands, burning tar barrels rolling down the street, 30 bonfires and 30 processions, with people dressed in traditional costumes or carrying crosses, which represent martyrs who were burnt at the stake in the 1500s. The spectacle draws 80,000 visitors. This year's event is on 5 Nov; you must buy a ticket in advance.

The Brewers Arms at the top of the High Street, or the bridge at the bottom, are good spots to watch the procession. Go early and expect crowds.

If you're making a day of it, start by climbing to the top of Lewes Castle, a 1,000-year-old Norman fort. A combined ticket includes admission to Anne of Cleves House Museum, a medieval house with a Tudor garden. You can also stroll around Lewes Priory Park, which is nearby and is home

to monastery ruins from the 11th century, and the 16th-century Southover Grange Gardens.

Drop by The Fifteenth Century Bookshop and St Anne's Galleries on the High Street, then pop into The Pelham Arms, which has a microbrewery. At the other end of town, Cliffe High Street's farmers' market is held on the first and third Saturday of the month, while there's also Cliffe Antiques Centre and Lewes Antiques Centre.

For a pit-stop, seek out Café du Jardin, in the courtyard of an old coaching inn. Book a table in its wine cellar, or eat at The Snowdrop Inn, which is tucked beneath a white cliff and named after the Lewes avalanche of 1836, the deadliest UK avalanche on record. The popular pub, which is decorated like a Romany caravan, has live music on Saturdays and Mondays.

Get there: Trains from London Victoria to Lewes take one hour.

Stay: With just two rooms, pretty Dubois Bed & Breakfast has a real family feel to it. From £60 a night. www.duboisbedandbreakfast.co.uk ▶



BEYOND LONDON

RYE

When it comes to Bonfire Night, you could say Rye rivals Lewes. But as its celebrations are a week later (10 Nov this year), you can squeeze in both. The Rye festivities predate Guy Fawkes' attempt to blow up Parliament, as Rye locals would burn their boats in the 1300s to avoid them being captured by the invading French. By the 1950s, the town had added a procession to the spectacle with decorated floats and a mechanical dragon that breathes 3ft flames through its nostrils – which still features in today's ceremony.

Each year, a torchlit procession marches to the beat of drums from Rye train station and loops around the town via Cinque Ports Street and the High Street, lighting up the town with red flares. A celebrity, carried on a sedan chair, lights the bonfire at the end of the parade on the Town Salts, near Skinners roundabout. Each year, a themed effigy is thrown on the bonfire as fireworks are set off, watched by 10,000 people on a donation basis.

This pretty medieval town, which is also in East Sussex, is easily explored on foot. Rye Castle Museum, also known as Ypres Tower, was built as a fortress in the 13th century and has since been a home, prison and mortuary. Its balcony has

stunning views of its medieval herb garden and the surrounding countryside.

Once home to the author Henry James and later EF Benson, Lamb House is now a National Trust property with a pond and walled garden. King Henry VIII's fortress, Camber Castle, is south of the town. Guided tours include Rye Harbour Nature Reserve, with its headland, and nearby Dungeness, which is one of the largest expanses of shingle in Europe.

Have lunch at The Cobbles Tea Room, a cottage built in 1826, and dessert at Edith's House, a café decorated like a vintage living room. For dinner, book a table at Italian restaurant Tuscan Rye, or cosy up in front of a log fire at The Globe Inn Marsh. If you want a hot drink to take away while you watch the fireworks, then try a lime zest and sea-salt hot chocolate from Knoops.

Get there: Trains from London King's Cross to Rye (via Ashford International) take one hour and 17 mins.

Stay: Aviemore Guest House is a quirky bed and breakfast which is just a two-minute walk away from the town's firework display. With original fireplaces and sloping ceilings, it has two dining rooms, a lounge with 1970s touches and a tiered back garden. From £70 a night with breakfast.

www.aviemoreguesthousesrye.co.uk ►

Dungeness



Mermaid Street in Rye



Rye's bonfire procession

I TRAVEL FOR CULTURE

*Once a Mod, always a Mod. Uncover
retro rides and 60s style. Ellesmere
Port, The Wirral, England.*

#LoveGreatBritain

FIND YOUR

GREAT

BRITAIN





BEYOND LONDON

BATTLE

This market town is named after the 1066 Battle of Hastings between William, Duke of Normandy, and the Saxon King Harold. After 'William the Conqueror' won, he built Battle Abbey. The town has a history of hosting elaborate Bonfire Night celebrations – the first recorded bonfire was in 1646 – and this year's takes place on 3 Nov. Hosted by the Battle Bonfire Boyes, it is a free event and, unlike Lewes' display, tickets are not required.

The day starts with the sound of church bells as a procession of children in fancy dress runs from the High Street to Abbey Green in front of the Abbey. Prizes are awarded for the best costume and best Guy. In the evening, the Guy joins a procession up the High Street to Abbey Green, where a bonfire is lit, followed by fireworks. More than 30,000 people are expected to attend.

Have time to explore? The obvious starting point is the Abbey, which is now an English Heritage site. After seeing the ruins and enjoying views of the former battlefield, you can follow a trail of wooden sculptures of Normans and Saxons and visit a Victorian walled garden. If you want to learn more, visit Battle Museum's 1066 exhibition, which displays an axe from the battle.

Stroll Almonry Gardens on the High Street and browse independent shops such as British Design British Made for gifts and accessories, and Battle Deli & Coffee Shop for chutney, jam and honey. The High Street is lined with tea rooms, such as Mrs Burton's outside the Abbey. The cottage features a real fire and low, sloping ceilings with original beams, and serves jacket potatoes and sandwiches. If that's full, Lavender Abbey Tea Room opposite also has log fires, and is known for its paninis.

Got a sweet tooth? Then try the raspberry meringue cake at Bluebells Café Tearoom, or a Freakshake at Skarlett's Café. The milkshakes overflow with whipped cream, biscuits, chocolate sauce, edible glitter, marshmallows, hundreds and thousands and perhaps a cupcake or ice-cream cone – yes – in the milkshake. You can also try butterscotch, mint or pistachio hot chocolate.

For dinner, stay warm over soup, pies and fruit crumble and custard at The Bull Inn, a 17th-century coaching inn built with stones from the Abbey's original kitchen. History buffs might want to dine at The Netherfield Arms, on the town's outskirts. The pub has real fires and oak beams, and was mentioned in the Domesday Book – a nationwide survey conducted in 1086 under the order of William the Conqueror.

Get there: Trains from London Charing Cross to Battle take from one hour and 18 mins.

Stay: The Grade II-listed Abbey Hotel, outside the Abbey, has eight rooms. While the building is Georgian, the decor is modern, with woolen throws to keep you cosy. From £100 with breakfast.

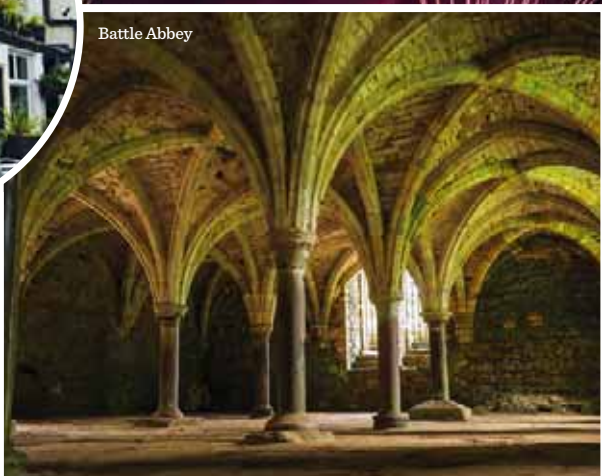
www.abbeyhotelbattle.co.uk ■



LOCATION MAP



Battle Abbey



I TRAVEL FOR — THE — STORIES

Watch the Edinburgh Tattoo fireworks light up the sky from Calton Hill, Lothian, Scotland.

#LoveGreatBritain

FIND YOUR

GREAT

BRITAIN



ESSENTIAL INFORMATION

TICKET INFORMATION

OYSTER CARDS & TRAVELCARDS

An Oyster card is a pre-paid travel smart card. Use it for single journeys on the bus, Tube, tram, DLR, London Overground and most National Rail train services within the London region. You can also buy a Visitor Oyster card before you leave home for £5 and load it with credit at www.visitorshop.tfl.gov.uk. The system has nine zones; Zone 1 is in central London.

Buy Oyster cards and Day Travelcards from ticket machines at stations, eight TfL Visitor Centres and any Oyster Ticket Shop. UK residents can also pay for their travel with a UK-issued contactless payment debit card. For more information, see www.tfl.gov.uk/visitinglondon.



An Oyster card also gives you a 25 per cent discount on Emirates Air Line (London's cable car) and discounts on single journeys on all MBNA Thames Clippers river buses. For more information, visit www.visitorshop.tfl.gov.uk.

VISITOR PASS

London Pass offers free entry and discounts at a fixed price. See www.visitbritainshop.com.


Useful things to know – from booking a place to stay to getting around the city



GETTING AROUND

For 24-hour travel info, visit Transport for London's (TfL) website www.tfl.gov.uk/visitinglondon or call T: 0343-222 1234.

LONDON UNDERGROUND (THE TUBE)


 www.tfl.gov.uk See London Underground Map (p. 104-105). Services run Mon-Sat 5am-12.30am and Sun 7.30am-11.30pm on most routes. Night Tube runs all night Fri & Sat on the Victoria and Jubilee lines, and most of the Central, Northern and Piccadilly lines. Fares vary; a Zone 1 adult fare is £4.90 (£2.40 Oyster).

LONDON BUSES


London buses run from 5am-12.30am. Night buses (midnight-4.30am) operate on main routes. Several services run 24 hours a day. You cannot pay for a London bus fare with

cash, so use a Visitor Oyster card, Oyster card, Travelcard or UK-issued contactless payment debit card. For further information, visit www.tfl.gov.uk/buses. Single fare is £1.50 with an Oyster card or UK-issued contactless card.

LONDON OVERGROUND

 www.tfl.gov.uk See London Underground Map (p. 104-105). Trains run Mon-Sat 5am-midnight and Sun 7am-11.30pm on most routes.

DOCKLANDS LIGHT RAILWAY

 www.tfl.gov.uk/dlr. T: 020-7363 9700. Trains run about every three to 10 mins. Mon-Sat 5.30am-12.30am; Sun 7am-11pm.

TAXIS

Fares increase after 8pm. Don't use vehicles that approach you, except for licensed black cabs. Visit www.tfl.gov.uk.

LONDON PLANNER



Now on YouTube

Subscribe

www.youtube.com/LondonPlanner

Map: refers to the grid coordinates on our Central London Map (p. 98-100). Prices quoted are for single journeys. Fares and journey times can change, so please check before you travel at www.tfl.gov.uk

TRAINS

➡ ➡ **Paddington** serves the West Country, Wales and the South Midlands.
 ➡ ➡ **Liverpool Street** and ➡ ➡ **Fenchurch Street** serve East Anglia and Essex.
 ➡ ➡ **Euston** ➡ ➡ **King's Cross St Pancras**
 ➡ ➡ **Marylebone** and ➡ ➡ **St Pancras International** (connects to ➡ ➡ **King's Cross St Pancras**) serve north and central Britain, and southeast England. ➡ ➡ **Charing Cross**
 ➡ ➡ **London Bridge** ➡ ➡ **Waterloo** and ➡ ➡ **Victoria** serve southern England.
 T: 0845-748 4950. www.nationalrail.co.uk.
Eurostar uses ➡ ➡ **St Pancras International**.
 Go to www.eurostar.com. UK: T: 0343-218 6186. International: T: 01233-617 575.



CAR HIRE

Make sure your driving licence is valid for the UK and see 'Congestion Charge' (p. 96).
Hertz T: 0870-844 8844. www.hertz.co.uk.
Kendall Cars Ltd T: 020-8542 0403.
www.kendallcars.com. **Enterprise Rent-A-Car** T: 0800-800 227. www.enterprise.co.uk.

SANTANDER CYCLES HIRE

Bicycles are for hire from docking stations across central London. £2 for 24-hour hire. First 30 minutes of cycling are free. Visit www.tfl.gov.uk/santandercycles or call T: 0343-222 6666.

Transport symbols explained

	London Underground		Docklands Light Railway
	London Overground		London River Services Pier
	National Rail		



AIRPORTS

HEATHROW AIRPORT

T: 0844-335 1801. www.heathrowairport.com.
London Underground: Direct trains to/from central London every five minutes 5am-11.45pm (p. 104) via ➡ ➡ **Piccadilly** line. Journey time 60 minutes.
Heathrow Connect: Two trains per hour to/from ➡ ➡ **Paddington**. Journey time 25 minutes.
Heathrow Express: Four direct trains an hour to/from ➡ ➡ **Paddington**. Journey time 15 minutes.
National Express: Three coaches per hour to/from **Victoria Coach Station**. Journey time 45 minutes.

GATWICK AIRPORT

T: 0844-892 0322. www.gatwickairport.com.
Thameslink: Direct trains to/from ➡ ➡ **London Bridge** and ➡ ➡ **St Pancras International** (connects to ➡ ➡ **King's Cross St Pancras**). Up to four trains per hour. **Gatwick Express:** Direct trains to/from ➡ ➡ **Victoria** every 15 minutes. The journey takes about 30 minutes. **Southern Railway:** Direct trains to/from ➡ ➡ **Victoria** every 15 minutes. The journey takes 30 minutes. **National Express:** Direct coaches to/from **Victoria Coach Station**, up to two coaches per hour. Journey times are one hour 20 minutes.

CITY AIRPORT

T: 020-7646 0088. www.londoncityairport.com.
 ➡ ➡ **DLR** **London City Airport:** Trains to/from ➡ ➡ **DLR** **Canary Wharf** (change at ➡ ➡ **DLR** **Poplar**) ➡ ➡ **DLR** **Canning Town** ➡ ➡ **DLR** **Bank** and many other stations.

STANSTED AIRPORT

T: 0844-335 1803. www.stanstedairport.com.
Stansted Express: Trains to/from ➡ ➡ **Liverpool Street**. **National Express:** Coaches run to/from **Victoria Coach Station**. **Stansted Citylink** runs coaches to **Stansted Airport** from ➡ ➡ **Victoria** and ➡ ➡ **King's Cross St Pancras**.

LUTON AIRPORT

T: 01582-405 100. www.london-luton.co.uk.
First Capital Connect: There are up to six trains per hour to/from ➡ ➡ **St Pancras International** (connects to ➡ ➡ **King's Cross St Pancras**).



Enjoy London with a Visitor Oyster Card.

The easiest way to travel around.

For more information or to pre-purchase, go to visitorshop.tfl.gov.uk

MAYOR OF LONDON

Transport for London



VISITOR INFORMATION CENTRE

Find tourist information at the City of London Information Centre, St Paul's Churchyard, EC4M 8BX.

Whether you need directions, information about the latest events or suggestions for days out, speak to the friendly, multilingual team at the only officially recognised tourist information centre in central London.

At the centre you can get Oyster cards, hotel reservations, foreign exchange, VAT refunds, stamps, postcards and tickets to attractions and tours as well as theatre shows.




There are also Visitor Centres at  Holborn, Victoria, Euston, King's Cross St Pancras, Liverpool Street, Piccadilly Circus, Paddington, Gatwick Airport and Heathrow Airport Terminals 2 & 3.



LONDON PLANNER

For copies of London Planner call T: 020-7611 4669

Morris Visitor Publications, 2nd Floor, Samuel House, 6 St Alban's Street, London, SW1Y 4SQ. T: 020-7242 5222. london.planner@morris-europe.com.

 LondonPlanner  LondonPlannerMag  LondonPlanner

www.youtube.com/londonplanner

Group Editor: Kohinoor Sahota **Group Deputy Editor:** Sarah Riches
Associate & Digital Editor: Neil Simpson **Sub Editor:** Anna Frame
Contributors: James Drury, Emma Levine **Picture Researcher:** Tamsan Barratt
Group Art Director: Tim Benton **Senior Designer:** Suzette Scoble
Content Director: Chris Johnson **Production & Distribution Director:** Melanie Needham **Senior Production Assistant & Retoucher:** Dave Weeks
Production Assistant: David Pollard **Senior Account Manager:** Dominique Marchi **Sales Director (Tourism):** Rob Way **Sales Development Manager:** Charlotte Johnson-Last **Business Development Managers:** Kate Roach, Kimberly Dunstan-Smith **Operations Director:** Bridget Bayford
Senior Marketing, Distribution & Production Co-ordinator: Graham Randall **Events and Marketing Associate:** Ana Martinez
Office Co-ordinator: Ewa Laskowska **Operations Assistant:** Vinita Swan
Publishing Director: Stewart Dymock **Managing Director:** Chris Manning
London & Partners: T: 020-7234 5800. www.londonandpartners.com
www.visitbritain.com

London Planner Volume 32, Issue 11. Printed in Great Britain.
 Over 100,000 monthly copies distributed worldwide. Est. 1984.
 © Morris Visitor Publications. No part may be reproduced without written permission from Morris Visitor Publications.

NOTE: The information contained in this publication has been published in good faith on the basis of information submitted to Morris Visitor Publications. MVP and VisitBritain cannot guarantee the accuracy of the information in this publication and accept no responsibility for any error or misrepresentation. All liability for loss, disappointment, negligence or other damages caused by reliance on the information contained in this publication, or in the event of bankruptcy, or liquidation or cessation of trade of any company, individual or firm is hereby excluded. Printed by Acorn Web Offset Ltd, ISO 14001 accredited. ISSN 0265 8437 LP/362/Nov/18/1104.

MVP

Morris Visitor Publications

visit
greenwich
times after times


IN PARTNERSHIP WITH



The papers used for this magazine are produced from certified sustainable sources by mills with recognised environmental accreditation. Please recycle this magazine, or return it to your hotel.

COACHES


London's main coach services use Victoria Coach Station, a central hub which offers travel across the UK, SW1W 9TP. T: 0343-222 1234.

www.tfl.gov.uk/coaches.  Victoria.

CONGESTION CHARGE

There is a congestion charge to drive into central London, Mon-Fri 7am-6pm. Pay in advance or on the day of travel (£11.50), or the day after (£14). T: UK: 0343-222 2222. International: +44 343 222 2222. www.tfl.gov.uk/congestioncharge.

RIVER SERVICES

MBNA Thames Clippers River Bus serves 22 piers. Prices start at £4.60. River Roamer ticket adult £19.50; child £9.75; under-fives free. Discounts on single journeys on all MBNA Thames Clippers river buses with an Oyster card.  www.tfl.gov.uk/river. MBNA Thames Clippers: www.mbnathamesclippers.com.

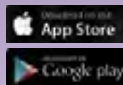
EMIRATES AIR LINE CABLE CAR

London's only cable car runs across the Thames between Greenwich Peninsula (The O2) and the Royal Docks (ExCeL). You can board from either the North Greenwich or Royal Victoria sides of the river (return flights are available). www.tfl.gov.uk/emiratesairline.



Where to Eat, Shop, Play and Stay Is Just a Touch Away

Put the power of Where® in the palm of your hand. Our Where Traveler City Guide app gives you instant access to thousands of hand-picked recommendations for things to do and places to go in destinations all over the world. Download it today for iPhone and Android.





ACCESSIBLE LONDON

Disabled travellers in London should visit www.tfl.gov.uk/accessibility or DisabledGo at www.disabledgo.com. For UK details, visit www.openbritain.net.

TRAVEL INFORMATION

For 24-hour London travel information (bus, Tube, river, rail, coach, cycle, tram, car, on foot, accessibility and assisted travel), visit www.tfl.gov.uk/gettingaround or call T: 0343-222 1234.



ACCOMMODATION

Choose from luxury hotels, bed and breakfasts, self-catering apartments and hostels.

BOOKING

Book accommodation before you travel through www.visitlondon.com. Alternatively book through www.expedia.co.uk, which is its official hotel booking partner.

24-HOUR TUBE: FRI & SAT

- Jubilee Line: Across the entire line.
- Victoria Line: Across the entire line.
- Northern Line: Between Morden and Camden Town and between Camden Town and High Barnet/Edgware.
- Piccadilly Line: Between Cockfosters and Heathrow Terminal 5.
- Central Line: Between White City and Leytonstone; between Ealing Broadway and White City; and between Leytonstone and Loughton/Hainault.

KENDALL SELF DRIVE

CARS LTD

EST
1969

Family business, offering top vehicle rental service for 49 years. Let us meet you at London airports or collect direct from us. Hassle free personal service. Large new fleet. Very low exclusive rates.

- Extensive car range • Multiseaters
- 14 seater minibus • Manual/Auto
- 9 Seater vehicles



Call: 0800 770 007

Offices in South London, Canterbury, Surrey & Hampshire.

www.kendallcars.com

© VisitBritain/Andrew Pickett

I TRAVEL FOR
FUN

Have a ball, with monster fun
zorb-ing in Loch Ness, Scotland.

#LoveGreatBritain

FIND YOUR
GREAT
BRITAIN



KEY

- Major Road
- Minor Road
- Railway
- Docklands Light Railway
- Canal
- Park/open space
- Famous buildings & places of interest
- Main line Railway Station
- Underground Station
- London Overground Station
- Rail Express Link to Airport
- Launch departure point
- Tourist Information Centre
- Visitor Centre
- Market
- Changing the Guard
- Place of Worship
- Youth Hostel

THE ORIGINAL TOUR

DISCOVER EXPLORE ENJOY

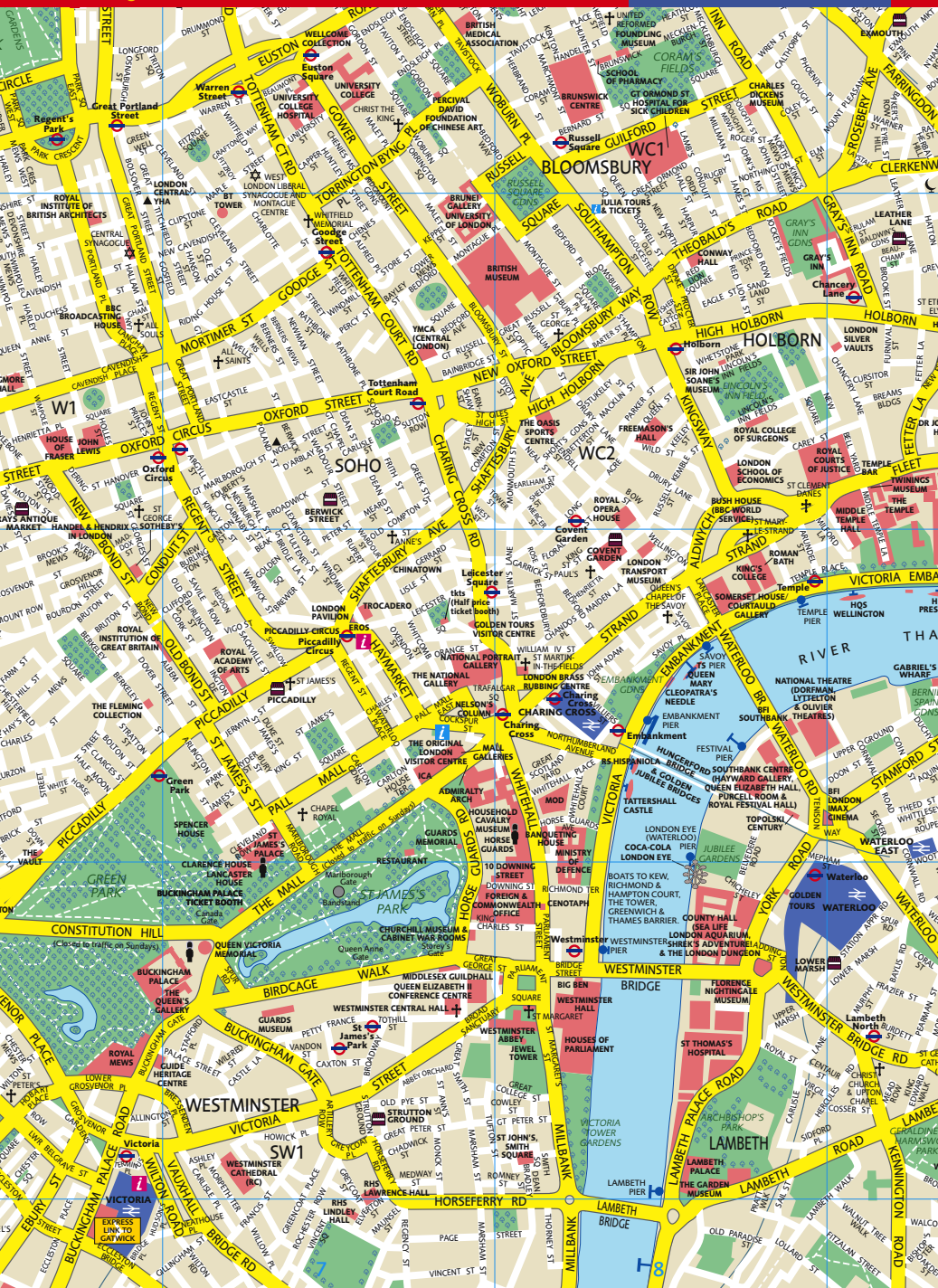


This map is based on information derived from aerial photography and an original field survey conducted by Cosmographics Ltd, Gresham House, 53 Clarendon Road, Walford, Herts., WD17 1LA. Contains Ordnance Survey data © Crown copyright and database right 2017. Map produced by Cosmographics Ltd. © British Tourist Authority (trading as visitBritain) 2018.



CENTRAL LONDON

www.theoriginaltour.com +44 020 8877 1722

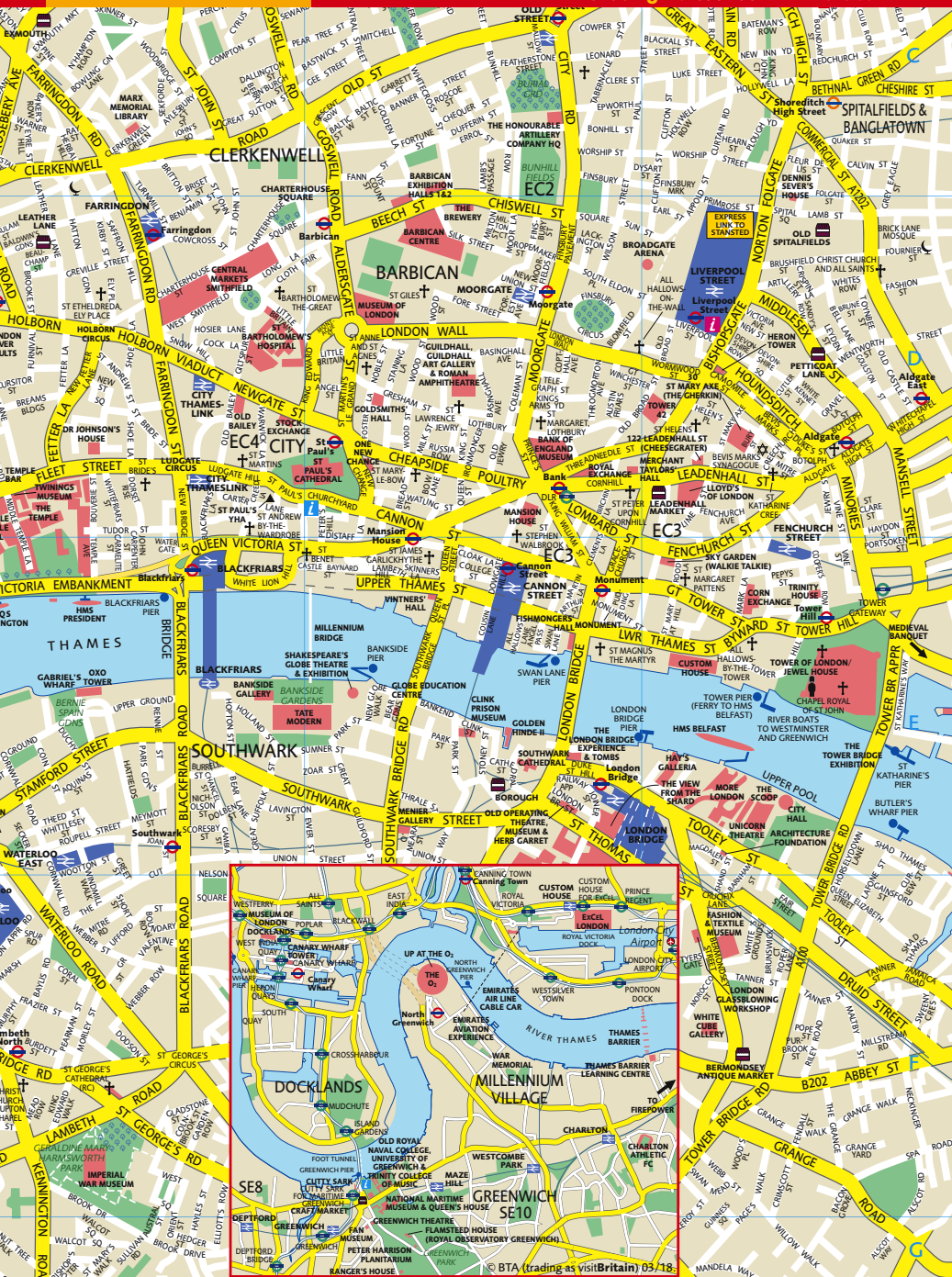


CENTRAL LONDON

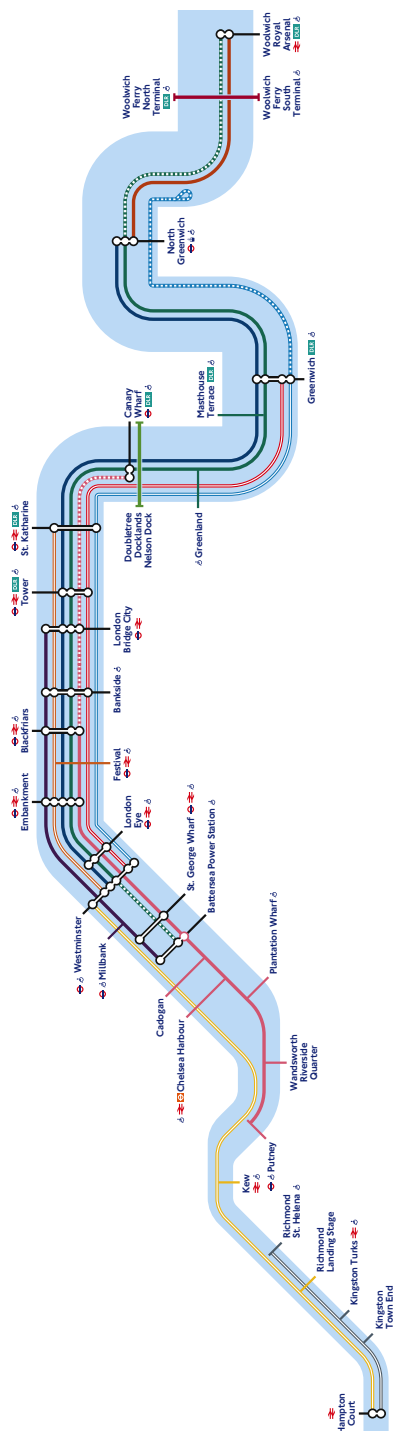
 **THE ORIGINAL TOUR**

DISCOVER · EXPLORE · ENJOY

www.theoriginaltour.com +44 020 8877 1722



LONDON RIVER SERVICES MAP



River Bus:	
RB1	Westminster to North Greenwich Daily
RB2	North Greenwich to Woolwich Royal Arsenal Daily
RB3	Westminster to Battersea Power Station Limited service: morning peak only
RB4	Westminster to North Greenwich Weekends only
RB5	North Greenwich to Woolwich Royal Arsenal Weekends only
RB6	Putney to Blackfriars Weekday morning and evenings only
RB7	Blackfriars to Canary Wharf Weekday morning and evenings only
RB8	Putney to Blackfriars PH services only

River Tours year-round:	
Westminster to Blackfriars	Operated by City Cruises
Blackfriars to London Eye	Operated by City Cruises
London Eye to Westminster	Operated by City Cruises
Westminster to London Eye	Operated by City Cruises
River Tours summer-only:	
Westminster to Hampton Court	Operated by Thames River Services
Hampton Court to Westminster	Operated by Thames River Services
Westminster to Richmond	Operated by Thames River Services
Richmond to Westminster	Operated by Thames River Services
Westminster to Putney	Operated by Thames River Services
Putney to Westminster	Operated by Thames River Services
River Tours circular (not shown on map):	
City Cruises Circular River Cruise	Four departures from Blackfriars Pier and Westminster Pier

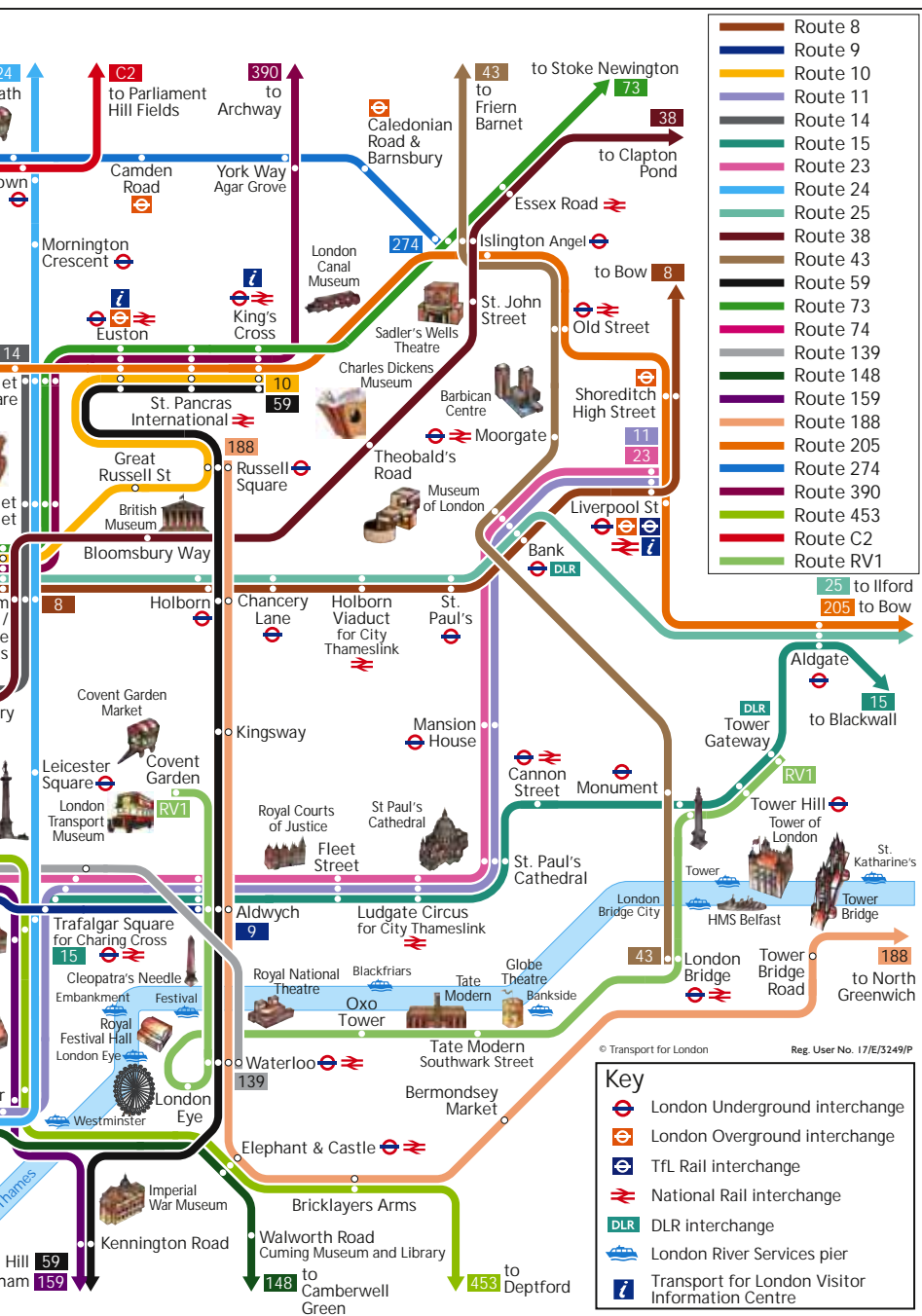
Ferry service:	
Woolwich Ferry	Operated by Biggs Marine
North Greenwich Ferry	Operated by Biggs Marine
Woolwich Ferry	Operated by Biggs Marine
Woolwich Ferry	Operated by Biggs Marine

Key to symbols:	
	Interchange points
	Docklands Light Railway
	Emirates Air Line
	London Underground
	London Underground
	National Rail
	Step-free access from street level to pier

Fig. 1000001: 1/2024/00

Key bus routes in central London





LONDON UNDERGROUND MAP



Bakerloo Central Circle District Hammersmith & City Jubilee Metropolitan Northern

MAYOR OF LONDON

 [tfl.gov.uk](https://www.tfl.gov.uk)

 24 hour travel information
0343 222 1234*

 Sign up for email updates
[tfl.gov.uk/e](https://www.tfl.gov.uk/e)

*Service and network charges may apply. See [tfl.gov.uk/terms](https://www.tfl.gov.uk/terms) for details.

© Transport for London

Reg. user No. 17/E/3249/P

Version D 7.2017

LONDON PLANNING

THINGS TO DO | FOOD AND DRINK | TRAVEL ESSENTIALS | FIRST



updates
emailupdates

@TfLTravelAlerts



**TRANSPORT
FOR LONDON**
 EVERY JOURNEY MATTERS

Improvement works may affect your journey, please check before you travel

Correct at time of going to print

NER.COM *Your friend
in the city*

T VISIT | ITINERARIES | ASK THE EXPERT | TICKETS AND OFFERS

LONDON IN NUMBERS

The
Greatest
City

OVER
300
LANGUAGES

are spoken in
London – more
than in any
other country
in the world

THERE ARE
MORE THAN

70

LONDON IS THE
GREENEST
CITY OF ITS SIZE
IN THE WORLD.
HYDE PARK
ALONE COVERS

350
ACRES

IN THE MIDDLE
OF THE CITY

London boasts the tallest isolated
stone column in the world,

MONUMENT

which stands at

202
FEET

London is Europe's most
populated city and has
more **billionaires** per head
than any other world city



MICHELIN-STARRED RESTAURANTS
WITHIN THE CAPITAL MAKE LONDON
A CULINARY WORLD HOTSPOT

LONDON HAS MORE THAN

170

MUSEUMS

AND OVER

850

ART GALLERIES

MANY OF WHICH OFFER

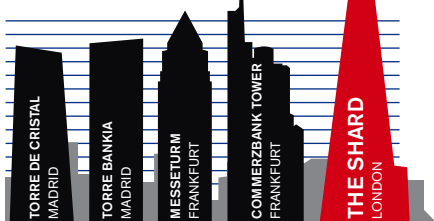
FREE ADMISSION



London has hosted the Olympic
Games an impressive three times,
more than any other city

THE LONDON UNDERGROUND
HAS THE OLDEST
UNDERGROUND RAILWAY
IN THE WORLD.
THE METROPOLITAN LINE

The Shard stands at **1,016 feet**
tall and is the tallest building
in Western Europe



OPENED IN
1863

Sources: Languages: london.gov.uk;
Nelson's Column: BBC; Populated
city: londoncouncils.gov.uk/
huffingtonpost.com; Restaurants:
Visit London; Museums: london.gov.
uk; Metropolitan Line: tfl.gov.uk;
The Shard: the-shard.com; Olympics:
Hyde Park: lonelyplanet.com

VISIT OUR NEW ONLINE GUIDE FOR
TRAVEL TIPS, ITINERARIES AND TICKETS

LONDON PLANNER

.COM *Your friend
in the city*



THINGS TO DO | FOOD AND DRINK | TRAVEL ESSENTIALS
FIRST VISIT | ITINERARIES | ASK THE EXPERT | TICKETS AND OFFERS



'THERE IS
SIMPLY
NOTHING ELSE
LIKE IT'

The New York Times

Disney
THE LION KING

thelionking.co.uk | LYCEUM THEATRE, LONDON