



LONDON NEIGHBOURHOODS **STRATFORD**

Sample itinerary

LONDON
CONVENTION BUREAU

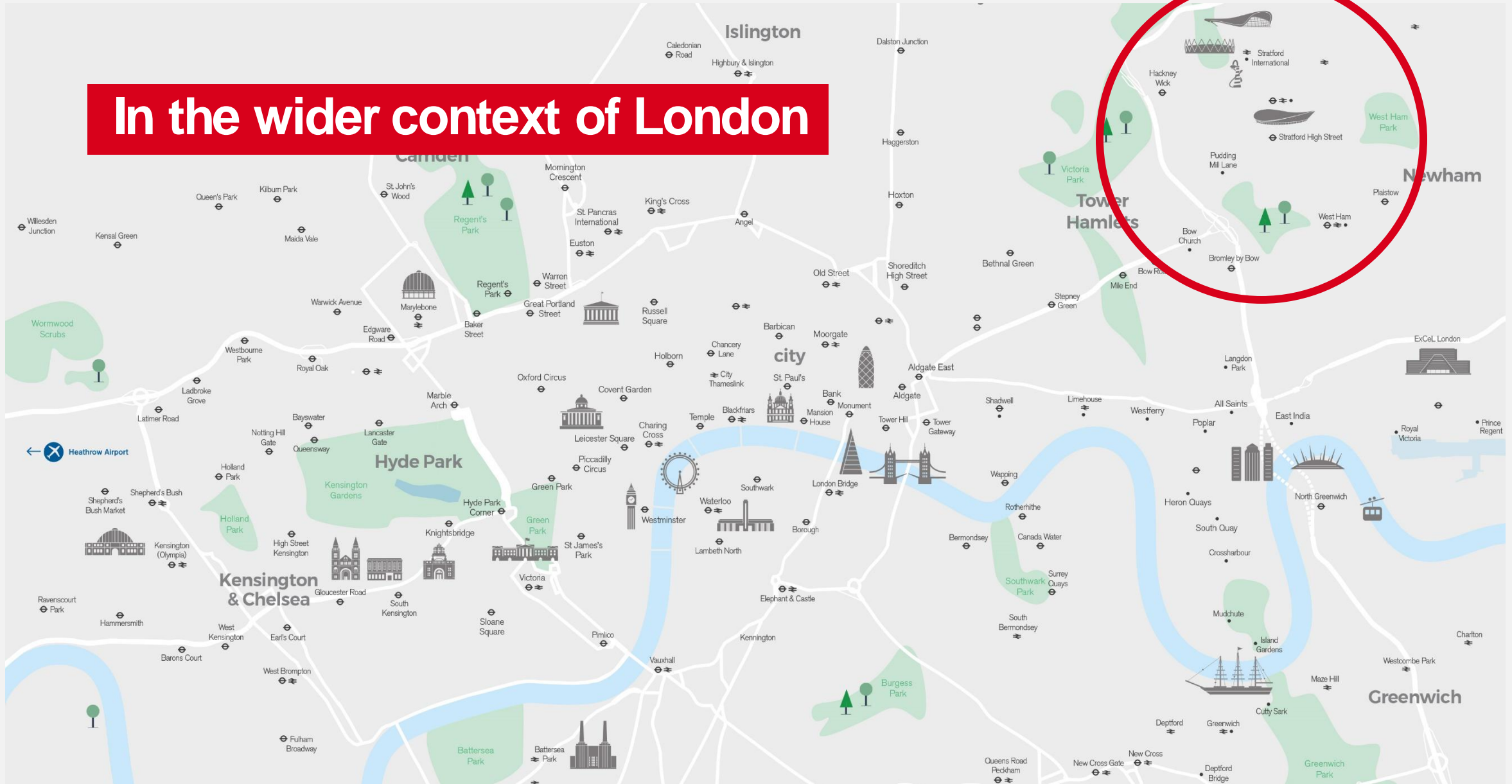
Stratford

Stratford is a district in the east end of London, situated in the London Borough of Newham.

It's home to the Queen Elizabeth Olympic Park, West Ham United F.C., dedicated design campus Here East, Westfield shopping centre and vertical community The Stratford.



In the wider context of London



Getting here:

London City Airport is one of six international airports in London and is located right at the centre of the capital.

The airport's location is a vital aspect for business travellers, with ExCeL London, Canary Wharf and Greenwich all being in close reach. The departure lounge is also designed for the business traveller, with free wifi, workstations, charging-points and more.

Currently undergoing a £500 million development, London City Airport will see a completely new experience delivered to travellers by 2022.

London City Airport flights

City	Flights per week
Amsterdam	148
Zurich	106
Frankfurt	72
Geneva	38
Berlin	32
Munich	34
Lisbon	24
Warsaw	24

Weekly flights to/from London City Airport (LCY) by city

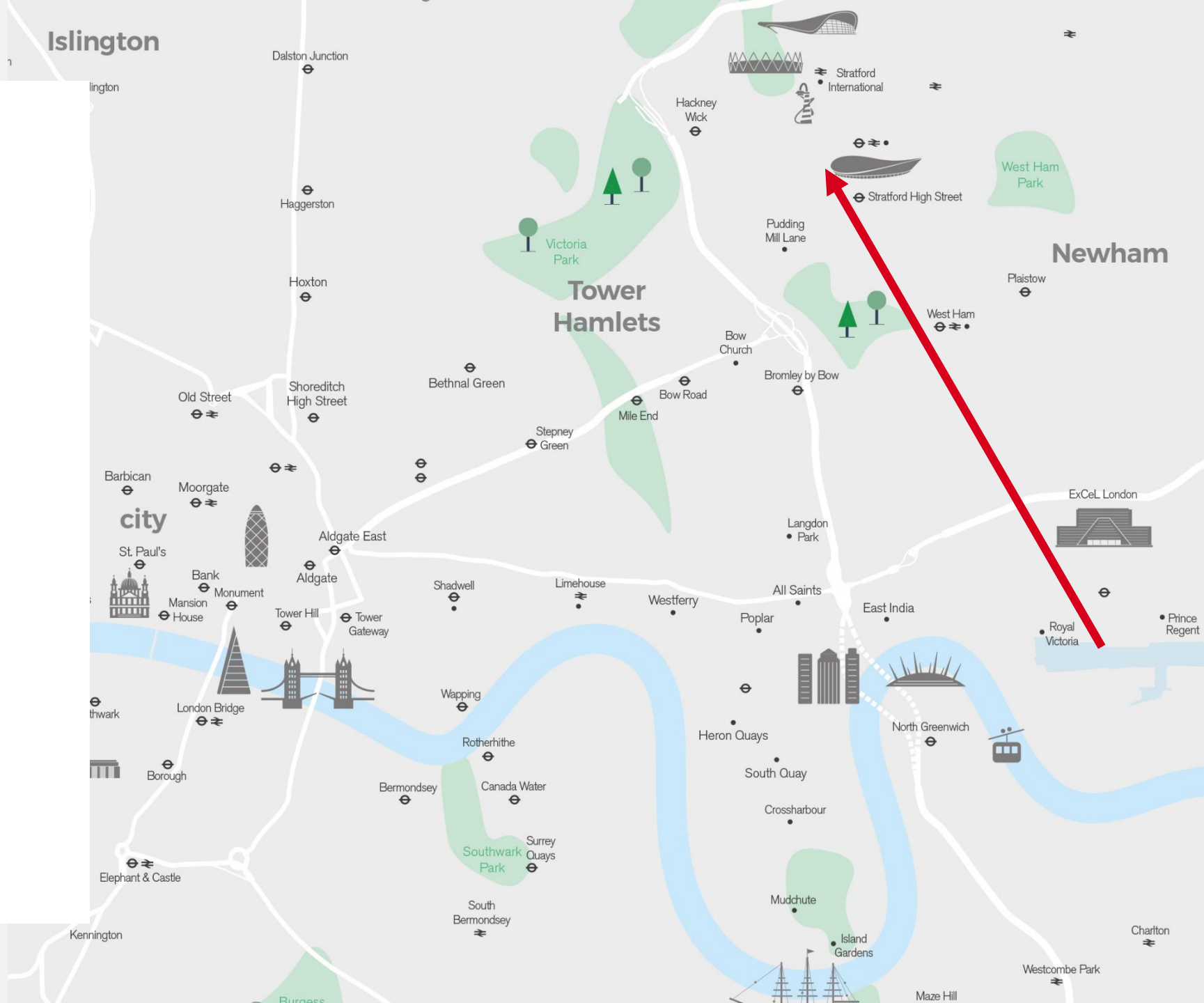
Journey times

London City Airport to
Stratford:

21 minutes by public
transport (DLR and
Tube) or car

Kings Cross to
Stratford:

6 minutes by South-
Eastern High-speed
train



Tube map

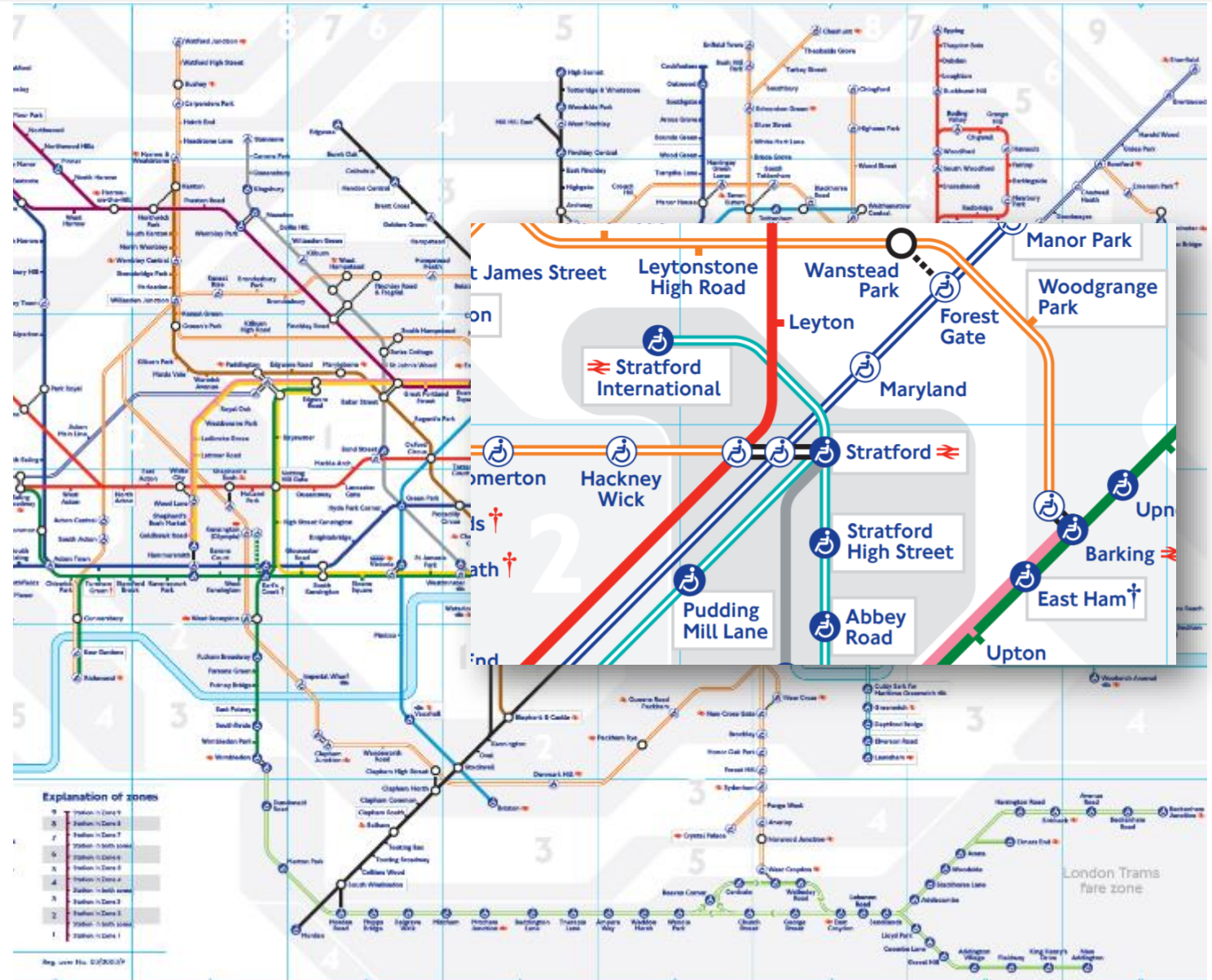
Fare zones: 2 and 3

Stratford – nearest stations:

Stratford Station

Stratford International & DLR

Public transport served by TFL Rail, Central, Jubilee, Overground, Cross rail and DLR lines.



Venues



The Podium

Take in the views at the roots of the ArcelorMittal Orbit in this light and airy events space.



Copper Box Arena

Experience the most flexible indoor venue in the park that is also one of the largest sports arenas in London.



London Aquatics Centre

Be amazed by these stunning meeting rooms that offer the world-famous main pool auditorium.

Venues



Lee Valley Hockey and Tennis Centre

Check out the spacious upstairs lounge coming with a kitchen and bar.



London Stadium

See the transformation of the London Stadium into a state-of-the-art multi-sport stadium.



The Stratford

Join this vibrant east London community including a design hotel, restaurants, meeting rooms and venue spaces.

The Stratford

The Stratford Hotel serves you great views.

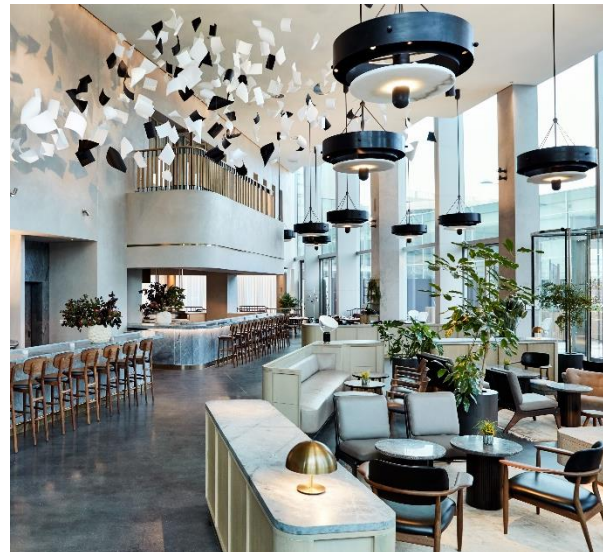
Overlooking Queen Elizabeth Olympic Park, guests are surrounded by world-class art, culture and entertainment.

Featuring an all-day brasserie, lounge bar, 24-hour gym, four event spaces and a sky garden, The Stratford is a tranquil urban retreat with a vibrant social spirit.

Its 145 rooms blend Scandinavian style with London's fastest 10GB wifi.



**THE
STRATFORD**



Activities



Aspers Westfield Stratford City

Spend an evening in this Casino with dedicated gaming floors and separate poker rooms.



ArcelorMittal Orbit

Challenge your guests to a 114.5-metre-high tunnel slide in the Queen Elizabeth Olympic Park.



CRATE Brewery Tours

Discover this old factory with its own micro-brewery, inventive pizzas and DJ sets.

Activities



Emirates Air Line

Take a ride in London's only cable car with spectacular views of east London.



Thames Clippers

Learn more about London's iconic landmarks cruising along the riverside.



Westfield Stratford City

Shop for your favourite brands at this shopping centre in Stratford.

Activities



O2 Arena

From sports to music to comedy, this 20,000 seated venue is the world's most popular arena.



Greenwich Market

Open every day with street food, antiques, fashion and boutique shops. Relax at a local pub afterwards.



Eltham Palace

19 acres of beautiful gardens and a medieval palace with Tudor royal residence.



3-day itinerary for small conferences

Day 1

11:50 Arrival at London City Airport

Quick, 20 minute transfer by coach to conference hotel The Stratford

12:30 Arrival at The Stratford and check-in

13:00 – 14:30 Group lunch at the lively Brasserie

15:00 – 17:00 Kick-off meeting in the Space 3 and 4

18:30 – 19:30 Drinks reception in The Orbit

20:00 Gala dinner at The Orbit



Day 2

07:00 Breakfast at the hotel

09:00 – 13:00 Half a day of meetings

13:30 – 18:00 Choice of activities

19:30 Drinks on 25th floor at Sky Garden

23:00 – late Chef's table in Allegra



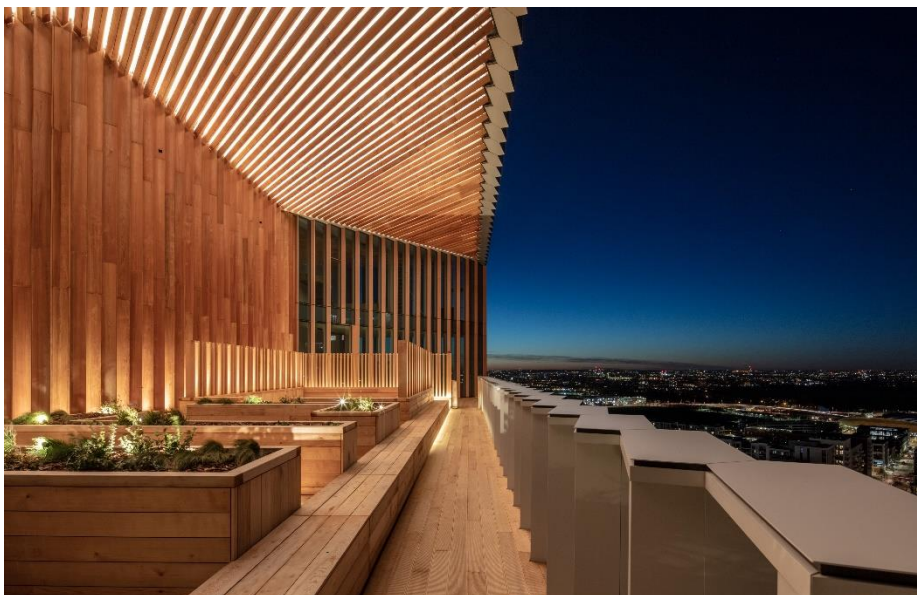
Day 3

See more of London

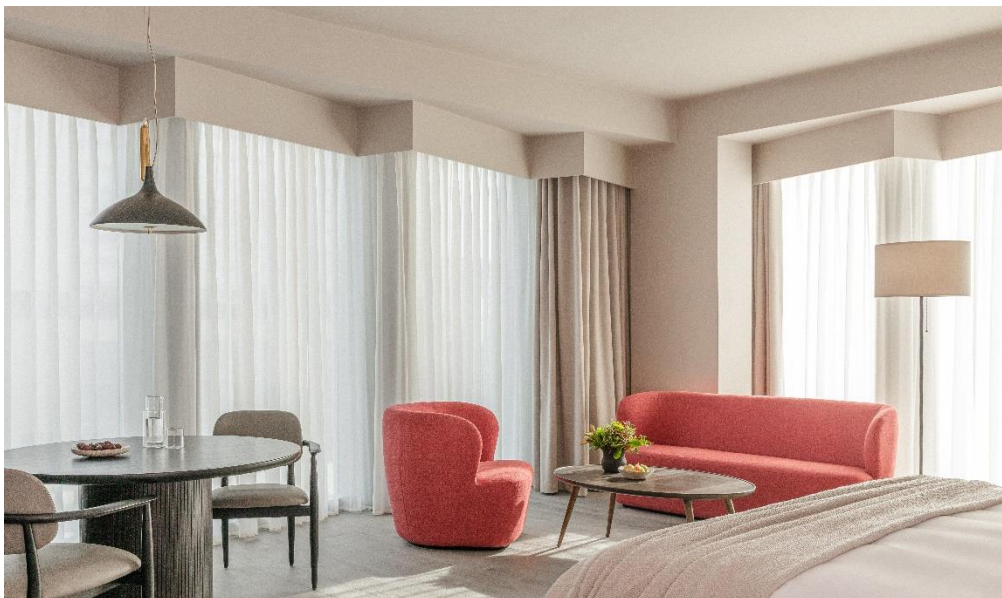
Explore a different part of London.

Take a trip along the iconic river Thames into central London, passing many of London's historic and modern buildings, from Tower Bridge and the Houses of Parliament to Canary Wharf and the Shard.





From
£359pp



Rates

The Stratford

- Drinks reception
 - Wine
 - Beer
 - Soft drinks
- Dinner
 - Three courses
 - Half bottle of wine
 - Tea and coffee
- Day delegate package
 - Includes room hire, three coffee breaks and buffet lunch
- 2 nights' accommodation
 - Including breakfast

= from £359pp

Day 1

Time	Activity	Location
11:50	Arrival	London City Airport
12:30	Check-in	The Stratford
13:00 – 14:30	Group lunch	Brasserie
15:00 – 17:00	Kick-off meeting	Space 3 & 4
18:30 – 19:30	Drinks reception	The Orbit
20:00	Gala Dinner	Gala dinner at The Orbit

Day 2

Time	Activity	Location
07:00	Breakfast	The Stratford
09:00 – 13:00	Meetings (half day)	The Stratford
13:30 – 18:00	Choice of activities (see activities slide)	Various
19:30	Drinks	25 th Floor Sky Garden
23:00 – late	Dinner	Chef's table in Allegra

Day 3

Time	Activity	Location
11:00	Check out	The Stratford
11:00 onwards	Various	Various

Turn this itinerary into a reality.

Contact the London Convention Bureau for more information.

conventionbureau@londonandpartners.com