

# London at a glance

6 Airports

396

Direct flights to international destinations



455,209

Average number of passengers per day



1.37bn

People use the underground every year



1600  
Number of hotels

more than

1700

Future hotels to be built by 2020

140,000  
No. of rooms



24 FREE attractions



4 UNESCO

World heritage sites



70

Michelin stars  
19,000 places to eat

173 Museums

857  
ART GALLERIES

Three of the top ten museums and galleries in the world are in London with 857 art galleries in total

1000+  
Diverse venues

12 main stations

12 lines

covering 586 km and serving 422 stations

## London facts



more than

17,000 music performances a year across London's 300+ venues including the O2 arena - the world's most popular music venue.



London Fashion Week

generates over £100m of orders and over 32,000 hours of digital content watched in the UK from more than 100 countries.



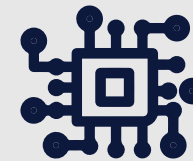
1,364

medical clinics, manufacturers, pharmaceutical and biotechnology companies



233

foreign languages in London Language Capital CILT report (2010)



No of Tech companies: London's tech sector is currently home to 46,000 enterprises, contributing 240,000 jobs across the city.



No of HQ's in London: 93 Fortune 500 companies have an HQ in London and a total of 184 have a presence here



No of people employed in London's creative economy: 816,000 people work in London's creative economy which contributes to 15 per cent of the city's jobs.

143,000

people employed in the banking sector

